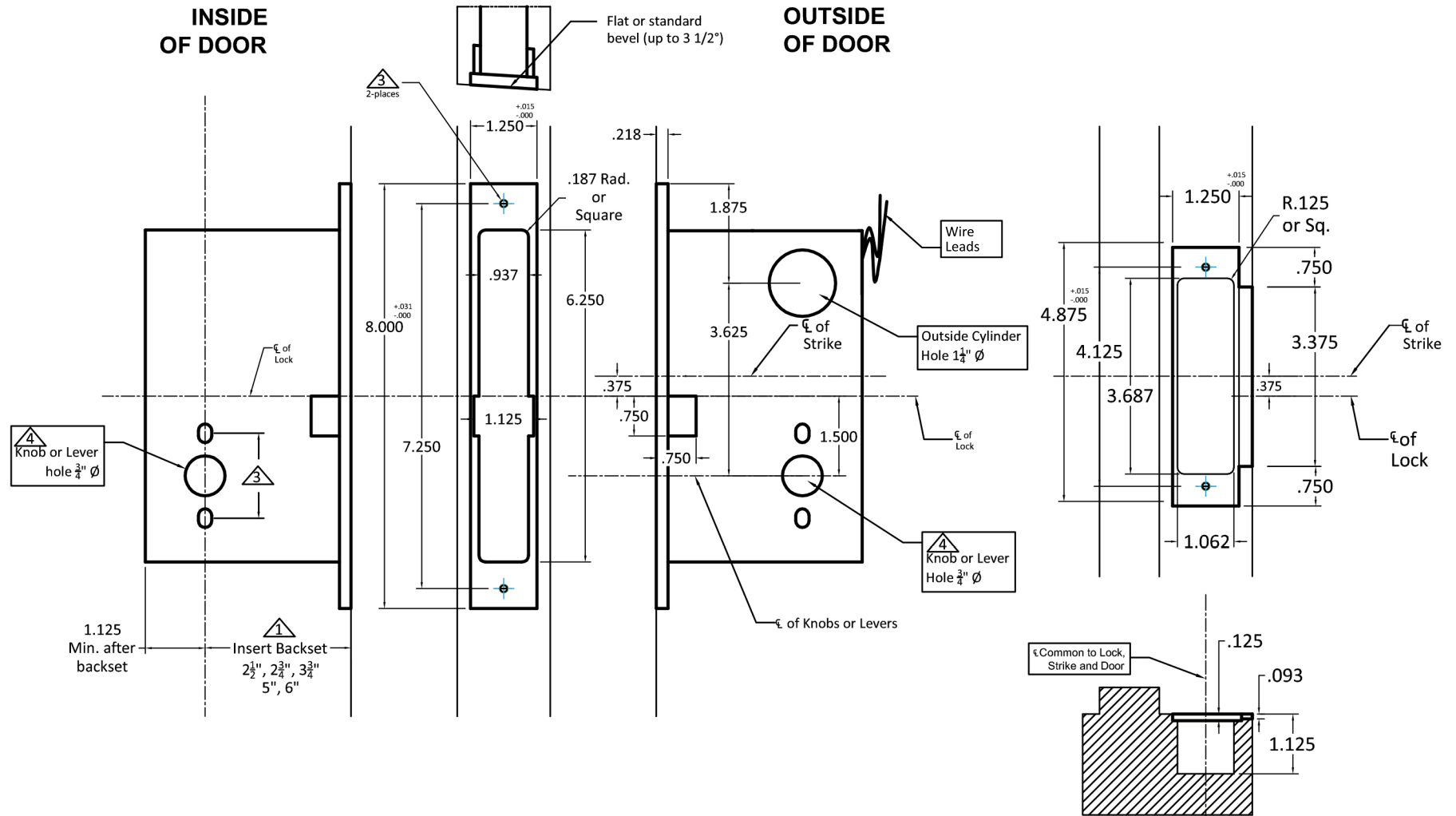


**INSIDE
OF DOOR**

**OUTSIDE
OF DOOR**



Notes:

- ▲ Insert backset here 2 1/2", 2 3/4",
- ▲ Prep for #12 wood or 12-24 machine screws
- ▲ Thru bolting holes **ONLY** if required. See trim manufacturers standard template for details. Accurate lock's accommodates 1 1/2" to 1 1/8" center to centers and up to 1/2" dia. post. If there are any additional questions about the thru-bolting, please contact our office.
- ▲ Knob, thumbturn and ER holes may vary from different trim manufacturers. Please refer to their templates to confirm these dimensions.

Additional Notes:

- a) **Responsibility:** Door and frame manufacturers are responsible for providing adequate construction or re-inforcement for proper installation of hardware shown.
- b) Please contact us if a double lip strike is needed - for a proper template
- c) See catalog / spec sheets for additional lock details

**Standard M9145E/M9156E/M9159E
Lever x Lever or Knob x Knob Template
All Backsets**

T-ALH.M9145E/M9156E/M9159E.LL