



# ACCURATE LOCK & HARDWARE

AMERICAN CRAFTED SINCE 1972

---

## 1700 Narrow Backset Mortise Lock

REDEFINING OPTIONS FOR ULTRA NARROW STILE DOORS



# STILE INNOVATION

## 1700 SERIES

Accurate's lock innovation makes its debut to allow more flexibility for ultra narrow stile aluminum doors. Pair with a variety of decorative or commercial trim options to do more with less. Available in a range of finishes and functions, the 1700 Series opens the door to endless possibilities.

1756 FUNCTION SHOWN WITH 17L LEVER AND 2R ROSE

# STILE INNOVATION

## 1700 SERIES NARROW BACKSET LOCK

### SLEEK AESTHETICS

- Maintain sleek lines where narrow stile doors are prominent
- Narrow backsets (1 $\frac{1}{8}$ " ) are ideal for aluminum storefront and glass wall partition systems with narrow stile framing (minimum 1  $\frac{7}{8}$ " stile recommended)

### DESIGN VERSATILITY

- Compatible with Accurate Lever Trim or custom fitted for most manufacturers' sectional lever trim (narrow roses/escutcheon)

### FUNCTIONALITY

- Can be used with standard mortise cylinders
- Features latch holdback by cylinder option

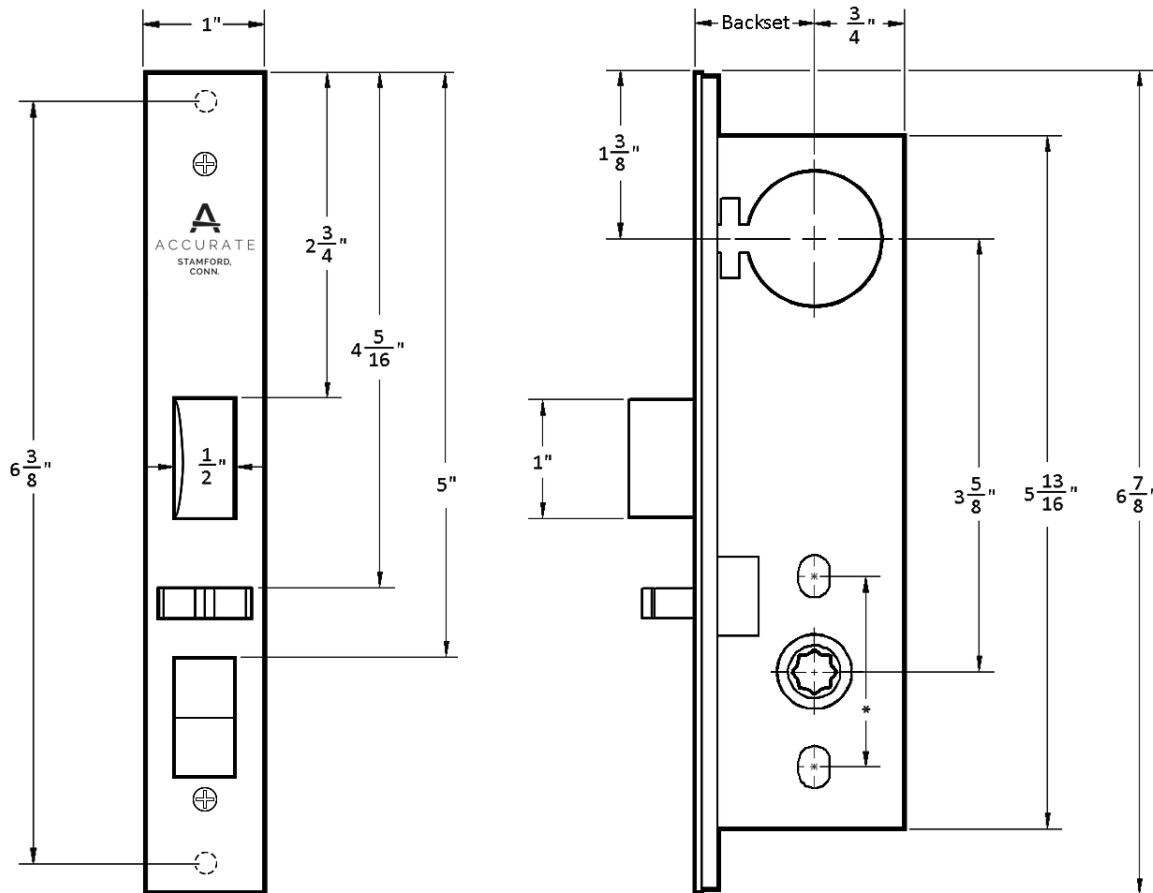


**STANDARD  
29L LEVER/2R ROSE SET**



**1757 ENTRANCE OR OFFICE FUNCTION**

# 1700 Series: Technical Details



**BACKSET:**  $1\frac{1}{8}$ " ( $1$ ",  $1\frac{1}{4}$ ",  $1\frac{1}{2}$ " available as special order).

**CASE:** Heavy gauge, stainless steel

**ARMOR FRONT:** Brass, bronze, aluminum or stainless steel, finished as required. Faceplate options: flat (default), radius or beveled (see How to Specify pgs. 10-11)

**LATCH BOLT:** Brass or stainless steel, solid type  $\frac{1}{2}$ " throw

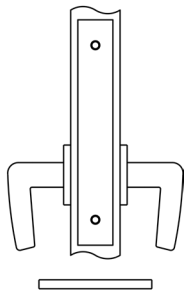
**STRIKE:**  $4\frac{7}{8}$ " ASA

**HUBS:** Set up to accept 8mm spindles. Other sizes can be accommodated.

**DUST BOX:** Brass, stainless steel or oil rubbed bronze

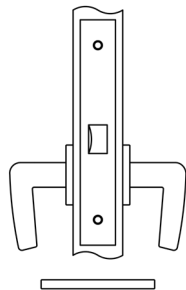
\*To accommodate through-bolting  
 $1\frac{1}{2}$  to  $1\frac{1}{16}$  center to center

# 1700 Series: Functions



## 1700ADL ACTIVE DUMMY LOCK

Active handles inside and outside.

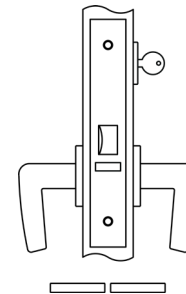


## 1725 PASSAGE

Latch bolt by lever either side.

Latch bolt can be held retracted by depressing, then turning key.\*

*\*Optional, please specify 1725H*

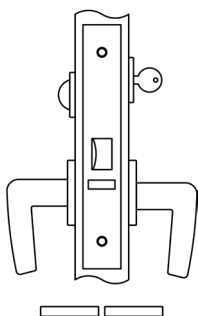


## 1745 CLASSROOM

Latch bolt by lever either side unless outside lever is locked by key.

Auxiliary latch deadlocks latch bolt.

Inside lever always free egress.

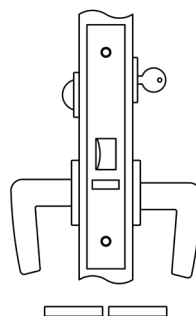


## 1750 ENTRANCE

Latch bolt by lever either side unless outside lever locked by thumb turn inside or key outside.

When outside lever is locked, operating the inside lever will NOT unlock outside lever.

Auxiliary latch deadlocks latch bolt.  
Inside lever always free egress.

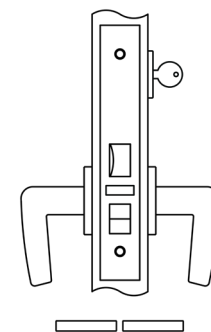


## 1753 ENTRANCE

Latch bolt by lever either side unless locked by thumb turn inside or key outside (both levers become rigid).

Auxiliary latch deadlocks latch bolt.

No emergency egress.



## 1756 ENTRANCE OR OFFICE

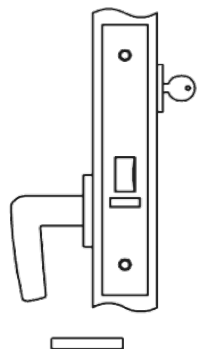
Latch bolt by key outside and lever either side unless outside lever is locked by toggle-action stop.

Auxiliary latch deadlocks latch bolt.

Latch bolt can be held retracted by depressing, then turning key.\*

*\*Optional, please specify 1756H*

# 1700 Series: Functions



## 1757 ENTRANCE OR OFFICE

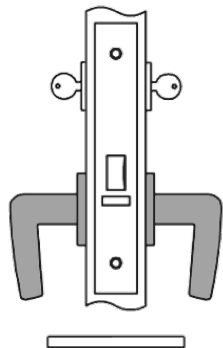
Latch by lever inside and key outside.

**No outside lever.**

Auxiliary latch deadlocks latch bolt.

Latch bolt can be held retracted by depressing, then turning key.\*

*\*Optional, please specify 1757H*



## 1758 INSTITUTION OR ASYLUM

Latch by key either side.

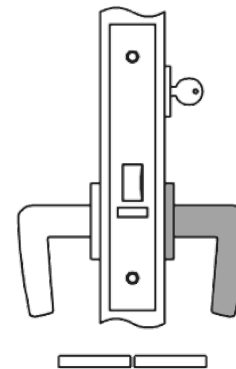
Inside and outside levers always **rigid**.\*

Auxiliary latch deadlocks latch bolt.

Latch bolt can be held retracted by depressing, then turning key.\*\*

*\*Verify code compliance before using this function*

*\*\*Optional, please specify 1758H*



## 1759 STOREROOM OR CLOSET

Latch by lever inside and key outside.

Outside lever always **rigid**.

Auxiliary latch deadlocks latch bolt.

*\*Optional, please specify 1759H*

# Accurate Lever Trim

**15L LEVER**



**16L LEVER**



**17L LEVER**



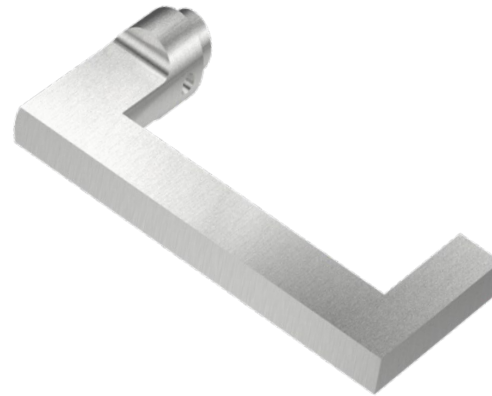
**18L LEVER**



**19L LEVER**



**20L LEVER**



**21L LEVER**



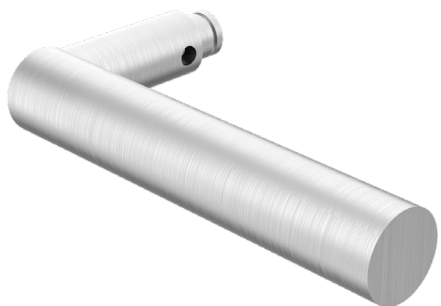
[CLICK TO SEE MORE INFO ON TRIM OPTIONS](#)

# Accurate Trim

**29L LEVER**



**74L LEVER**



**2R ROSE**

Side



Inside



Outside



**4R ROSE**

Side



Outside

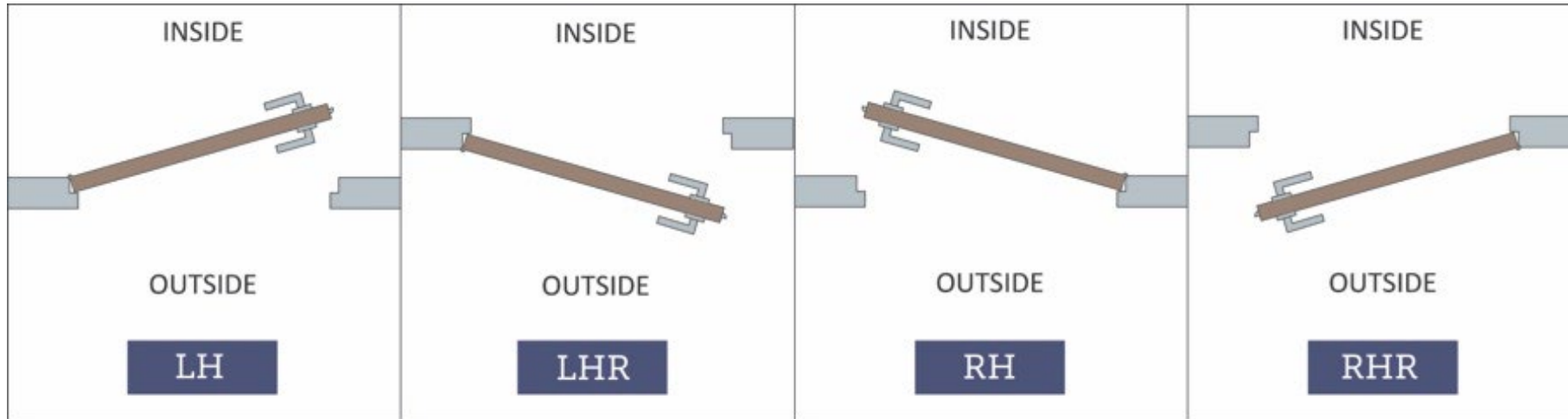


**1E-175  
NARROW ESCUTCHEON**



# HOW TO SPECIFY

## HANDING



## FINISHES

**GROUP 1:** US4, US4NL, US32D\*, US26D

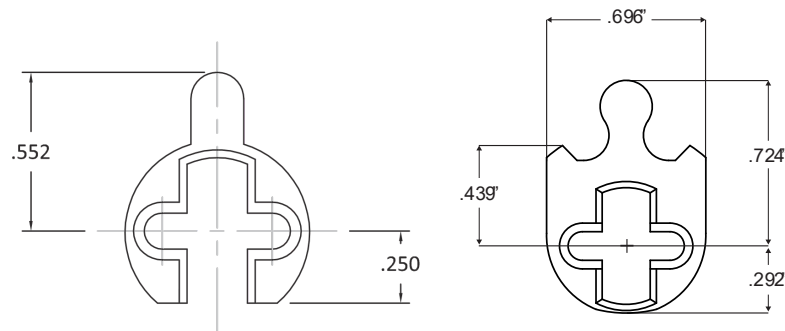
**GROUP 2:** US3, US3NL, US26, US32\*, US9\*, US10\*, US10B, US14, US15, US19

**GROUP 3:** BN, BB, TN, TB, DURO, ESN, US15A, US5

\* Trim options (including Accurate Levers) may not be available in US32D, US32, US9, or US10 finish. Please call for assistance.

To view example of finishes visit: [Accurate Finishes](#).

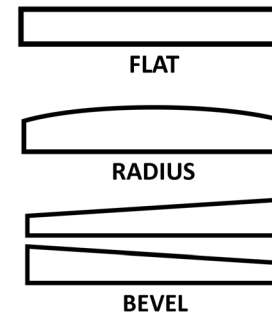
## CYLINDERS & KEYING



1700 Series locks accept any standard American mortise cylinder. For details on required cams and compatibility with other manufacturers' cylinders, please visit: [Accurate Support](#).

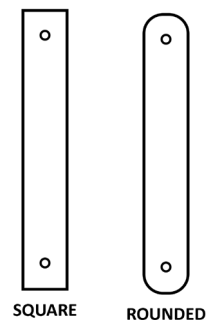
## FACEPLATE

### FACEPLATE EDGE



Flat Faceplate Edge furnished unless otherwise specified. Bevel Faceplate determined by handing.

### FACEPLATE CORNERS



Square Faceplate Corners furnished unless otherwise specified.



# HOW TO SPECIFY

**FUNCTION.FACEPLATE.BACKSET.TRIM.FINISH.HAND.DOORTHICKNESS**

**FUNCTIONS**  
See available functions (pg. 5)

**FACEPLATE**

*For Faceplate Edge:*

Specify: RF for Radius Edge, BF for Beveled Edge (determined by handing), otherwise Flat Faceplate Edge will be supplied.

*For Faceplate Corners:*

Specify RC for Round Corners, otherwise Square Corners will be supplied.

**BACKSET**

1 1/8" (Special order 1" backset available, please contact us for assistance).

**TRIM**

- Accurate trim (see pg. 7-8)
- Other manufacturers' sectional rose trim, please call for assistance.

**FINISHES**

See available finishes (pg. 10)

## EXAMPLES

**Office Lock | Radius Faceplate Round Corners | Accurate Trim**

E.g.: 1756.RFRC.1.29L/1E-175.US26D.RH.134

**Storeroom Lock | Flat Faceplate Round Corners | Accurate Trim**

E.g.: 1759.RC.1.15L/2R.US26D.RH.134

**Entry Lock | Beveled Faceplate Square Corners | Other Manufacturers' Trim\***

E.g.: 1757.BF.1125.8mm.US26D.RH.138

**Passage Lock with Hold Back | Flat Faceplate Round Corners | Other Manufacturers' Trim\***

E.g.: 1725H.RC.1125.7mm.US3NL.RH.138

## CUSTOM OPTIONS AVAILABLE

- Set up for levers by other manufacturers
- Sliding door functionality
- Glass Patch Narrow Backset Locks (G17)

**Cylinders are not included. Please specify separately.**

*\*Note: For compatibility with other manufacturers' trim please call for assistance.*

**ACCURATE LOCK & HARDWARE  
MANUFACTURERS OF LOCKS AND  
CUSTOM ARCHITECTURAL HARDWARE**

1 Annie Place | Stamford, CT 06902

**P:** 203.348.8865

**F:** 203.348.5234

**E:** sales@accuratelockandhardware.com

**www.accuratelockandhardware.com**

