



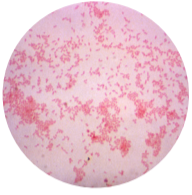
Maladies infectieuses et agents pathogènes à déclaration obligatoire

Vue synoptique 2024

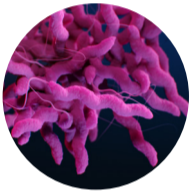
Botulisme
Clostridium botulinum



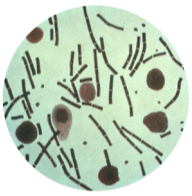
Brucellose
Brucella spp.



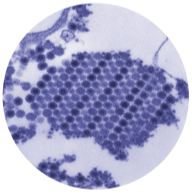
Campylobactériose
Campylobacter spp.



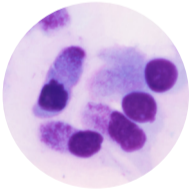
Charbon
Bacillus anthracis



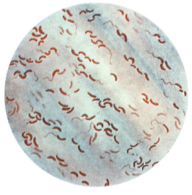
Chikungunya
Virus Chikungunya



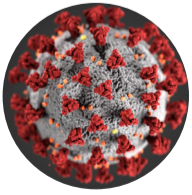
Chlamydie
Chlamydia trachomatis



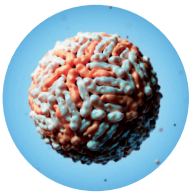
Choléra
Vibrio cholerae



COVID-19
SARS-CoV-2



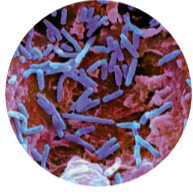
Dengue
Virus de la dengue



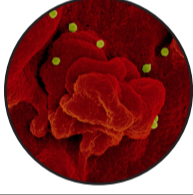
Diphthérie
Corynebacterium diphtheriae et autres corynébactéries produisant la toxine



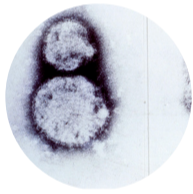
Entérobactéries productrices de carbapénémases (EPC)



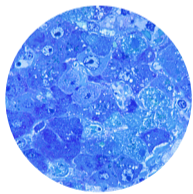
Fièvre de Crimée-Congo
Virus de Crimée-Congo



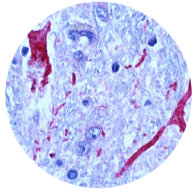
Fièvre de Hantaan
Hantavirus



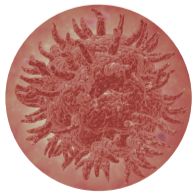
Fièvre de Lassa
Virus de Lassa



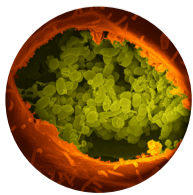
Fièvre du Nil occidental
Virus du Nil occidental



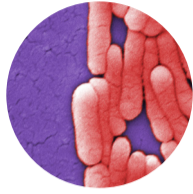
Fièvre jaune
Virus de la fièvre jaune



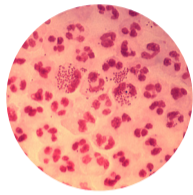
Fièvre Q
Coxiella burnetii



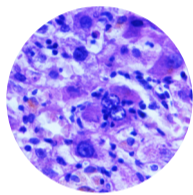
Fièvre typhoïde / paratyphoïde
Salmonella Typhi / Paratyphi



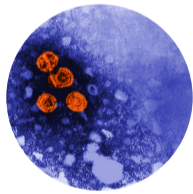
Gonorrhée
Neisseria gonorrhoeae



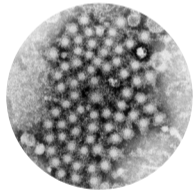
Hépatite A
Virus de l'hépatite A



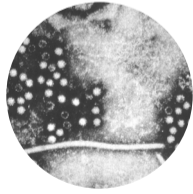
Hépatite B
Virus de l'hépatite B



Hépatite C
Virus de l'hépatite C



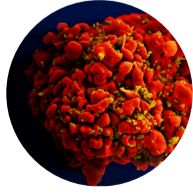
Hépatite E
Virus de l'hépatite E



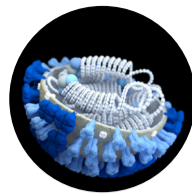
Infection à EHEC
EHEC, STEC, VTEC



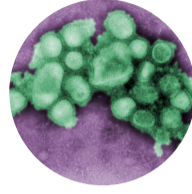
Infection à VIH / Sida
Virus de l'Immunodéficience humaine



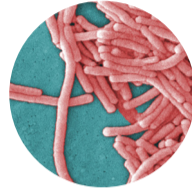
Influenza, grippe saisonnière
Virus Influenza



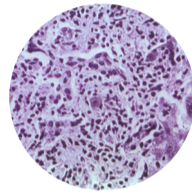
Influenza, nouveau sous-typ
Virus Influenza A HxNy (potentiel pandémique)



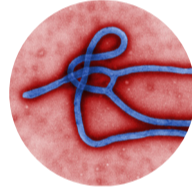
Légionellose
Legionella spp.



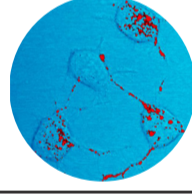
Listériose
Listeria monocytogenes



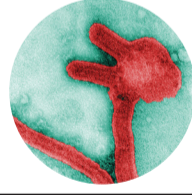
Maladie à virus Ebola
Virus d'Ebola



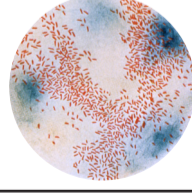
Maladie de Creutzfeldt-Jakob
Prions



Maladie de Marburg
Virus de Marburg



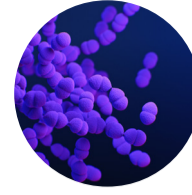
Maladies invasives à Haemophilus influenzae



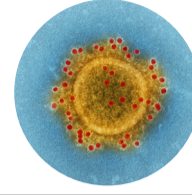
Maladies invasives à méningocoques
Neisseria meningitidis



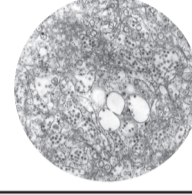
Maladies invasives à pneumocoques
Streptococcus pneumoniae



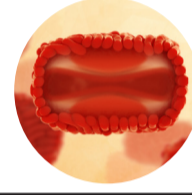
MERS
MERS-CoV



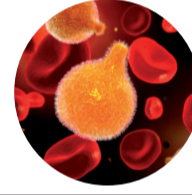
MEVE
Virus de l'encéphalite à tiques



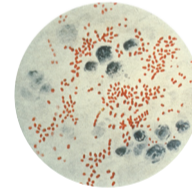
Mpox
Mpox-Virus



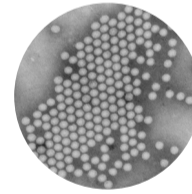
Paludisme
Plasmodium spp.



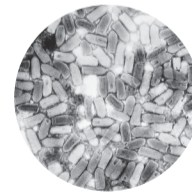
Peste
Yersinia pestis



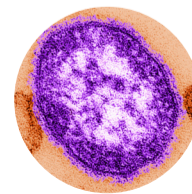
Poliomyélite
Virus de la poliomyélite



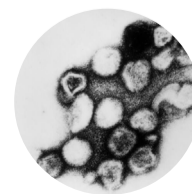
Rage
Virus de la rage



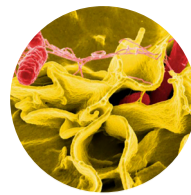
Rougeole
Virus de la rougeole



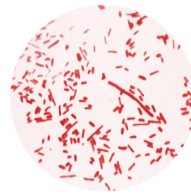
Rubéole
Virus de la rubéole



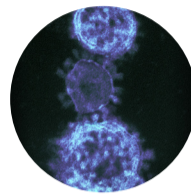
Salmonellose
Salmonella spp.



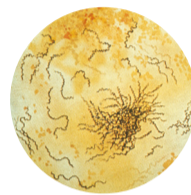
Shigellose
Shigella spp.



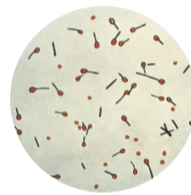
SRAS
SARS-CoV



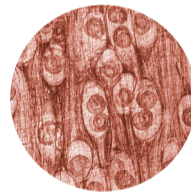
Syphilis
Treponema pallidum



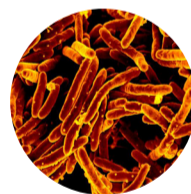
Tétanos
Clostridium tetani



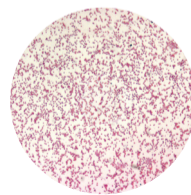
Trichinellose
Trichinella spiralis



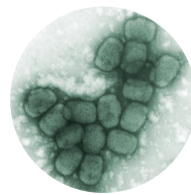
Tuberculose
Complexe *Mycobacterium tuberculosis*



Tularémie
Francisella tularensis



Variole
Virus de la variole



Zika
Virus du Zika

