

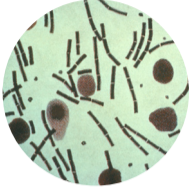


Notifiable communicable diseases and pathogens

Overview 2024

Anthrax

Bacillus anthracis



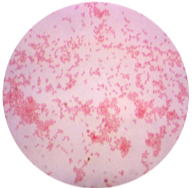
Botulism

Clostridium botulinum



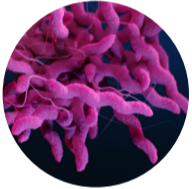
Brucellosis

Brucella spp.

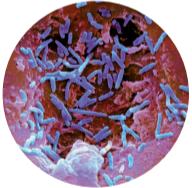


Campylobacteriosis

Campylobacter spp.

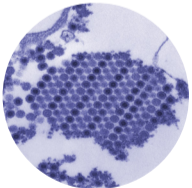


Carbapenemase-producing Enterobacteriaceae (CPE)



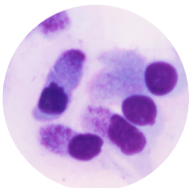
Chikungunya Fever

Chikungunya virus



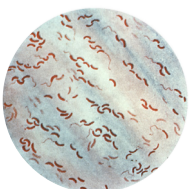
Chlamydia

Chlamydia trachomatis



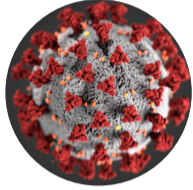
Cholera

Vibrio cholerae



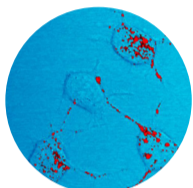
COVID-19

SARS-CoV-2



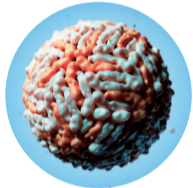
Creutzfeldt-Jakob disease

Prions



Dengue fever

Dengue virus



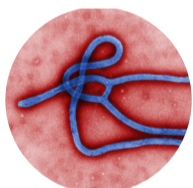
Diphtheria

Corynebacterium diphtheriae and other toxin-producing corynebacteria



Ebola fever

Ebola virus



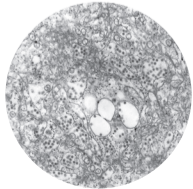
EHEC infection

EHEC, STEC, VTEC



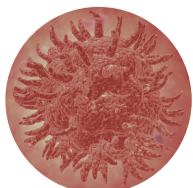
Tick-borne encephalitis (TBE)

Tick-borne encephalitis virus



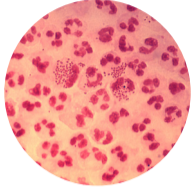
Yellow fever

Yellow fever virus

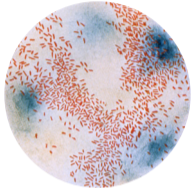


Gonorrhoea

Neisseria gonorrhoeae

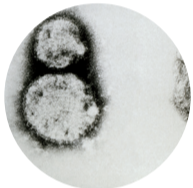


Haemophilus influenzae-diseases, invasive



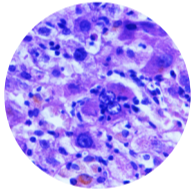
Hanta fever

Hantavirus



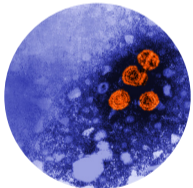
Hepatitis A

Hepatitis-A-Virus



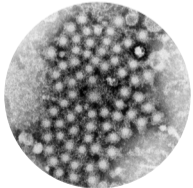
Hepatitis B

Hepatitis-B-Virus



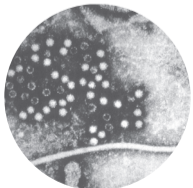
Hepatitis C

Hepatitis-C-Virus



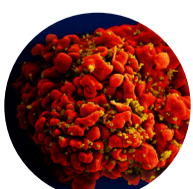
Hepatitis E

Hepatitis-E-Virus



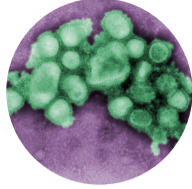
HIV-Infection/AIDS

Human immunodeficiency virus



Influenza, new subtype

Influenza A virus, HxNy (potentially pandemic)



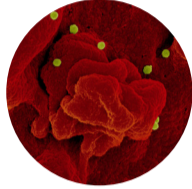
Influenza, seasonal flu

Influenza viruses



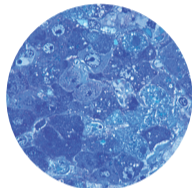
Crimean-Congo fever

Crimean-Congo virus



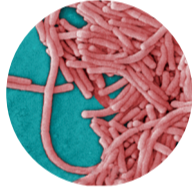
Lassa fever

Lassa virus



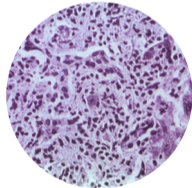
Legionnaires' disease

Legionella spp.



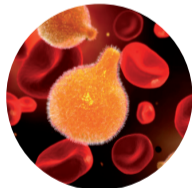
Listeria

Listeria monocytogenes



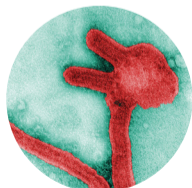
Malaria

Plasmodium spp.



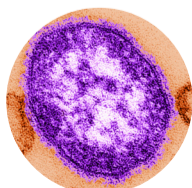
Marburg fever

Marburg virus



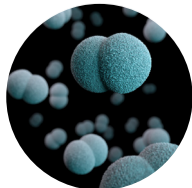
Measles

Measles virus



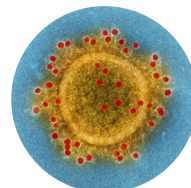
Meningococcal diseases, invasive

Neisseria meningitidis



MERS

MERS-CoV



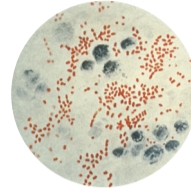
Mpox

Mpox-Virus



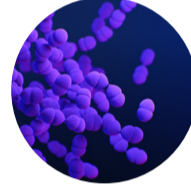
Plague

Yersinia pestis



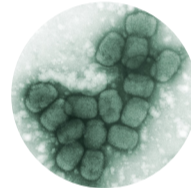
Pneumococcal diseases, invasive

Streptococcus pneumoniae



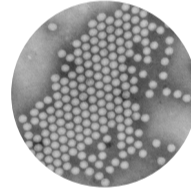
Smallpox

Smallpox virus



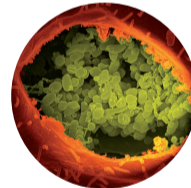
Poliomyelitis

Poliovirus



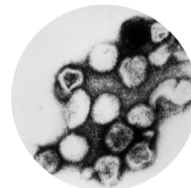
Q fever

Coxiella burnetii



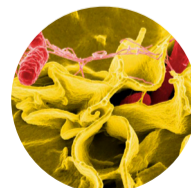
Rubella

Rubella virus



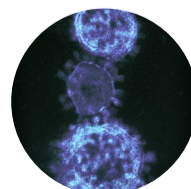
Salmonellosis

Salmonella spp.



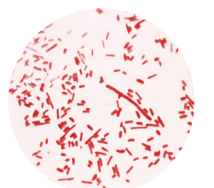
SARS

SARS-CoV



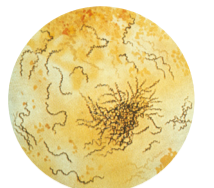
Shigellosis

Shigella spp.



Syphilis

Treponema pallidum



Tetanus

Clostridium tetani



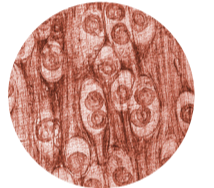
Rabies

Rabies virus



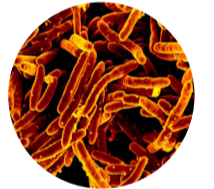
Trichinellosis

Trichinella spiralis



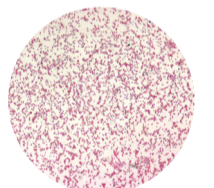
Tuberculosis

Mycobacterium tuberculosis complex



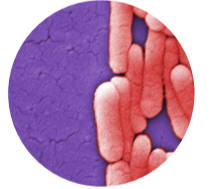
Tularaemia

Francisella tularensis



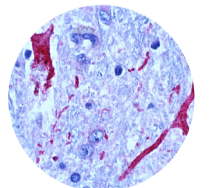
Typhoid/Paratyphoid

Salmonella typhi/paratyphi



West Nile fever

West Nile virus



Zika virus infection

Zika virus

