




## Cravate

### Cravate d'échelle

Fermeture par batteuse à triangle

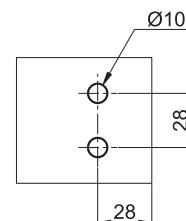
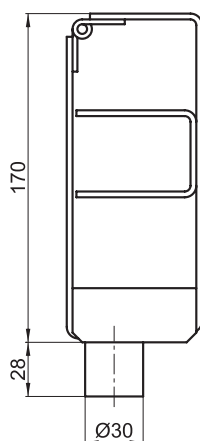
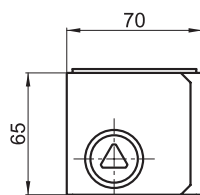
de 9, 11 ou 14 mm

Acier, finition époxy rouge RAL 3000

Réf.	△	
552.09	9	1160 g
552.11	11	1160 g
552.14	14	1160 g

### Option

- Ouverture par clé sur numéro



cotes de fixation