

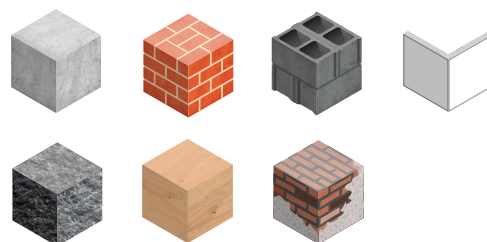
# CHEVILLE UNIVERSELLE

MUTP



Grappe de 25 chevilles

BÉTON  
MAÇONNERIE PLEINE  
PARPAING CREUX  
PLAQUES DE PLÂTRE  
PIERRE  
BOIS  
MUR ANCIEN

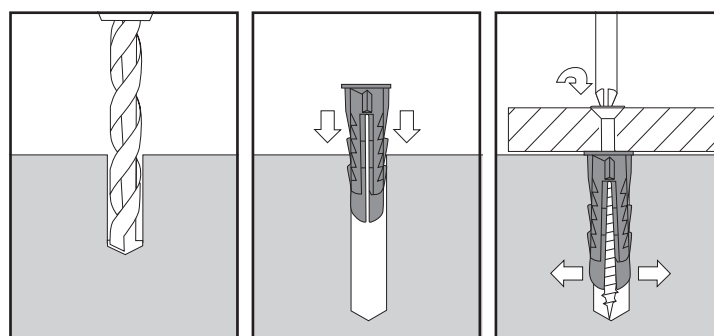


## CARACTÉRISTIQUES

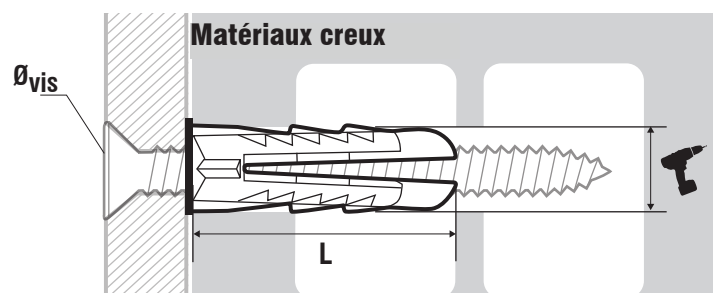
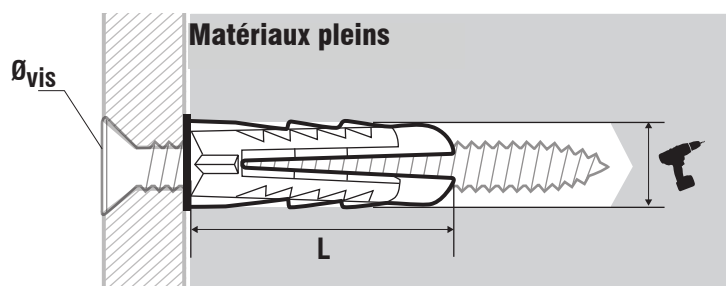
### Avantages:

- **Polyvalente :**
  - Convient à tous les types de matériaux
  - Fonctionne avec vis, patte à vis, clou...
- **Performante :**
  - Très bonne tenue dans tous types de murs.
  - Crantage anti-rotation.
  - Ouverture ultrarapide lors de l'expansion.
- **Robuste :**
  - Polypropylène très rigide et incassable.
- **Pratique :**
  - Grappe de 25 chevilles.

## MISE EN ŒUVRE



## DIMENSIONS



Ø	L	T	Ø <sub>vis</sub>	Référence
mm	mm	mm		
<b>6.0</b>	25	6	VBA 3 à 5 mm	<b>MUTP06</b>
<b>8.0</b>	30	8	VBA 4 à 7 mm	<b>MUTP08</b>
<b>8.0 PAV</b>	30	8	Patte à vis M5 à M7	<b>MUTP08M</b>
<b>10.0</b>	45	10	VBA 5 à 9 mm	<b>MUTP10</b>

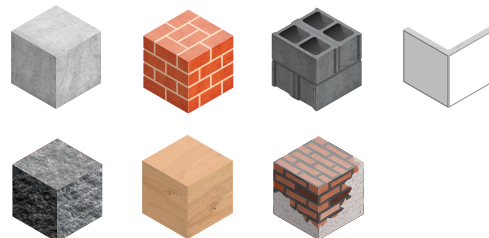
# UNIVERSAL PLUG

**MUTP**



25 plugs cluster

CONCRETE  
SOLID BRICK  
CONCRETE BLOCK  
DRYWALL  
STONE  
WOOD  
ANCIENT WALL

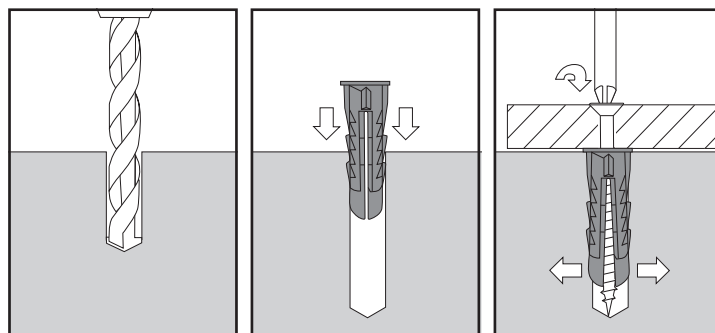


## FEATURES

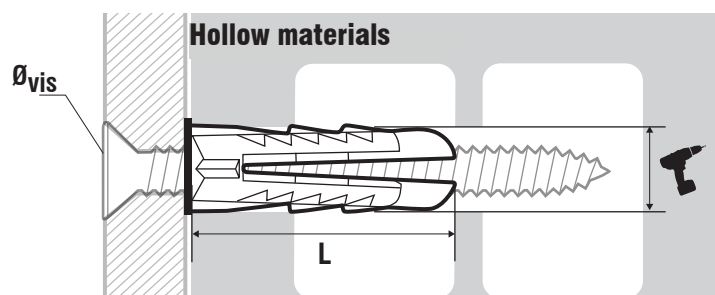
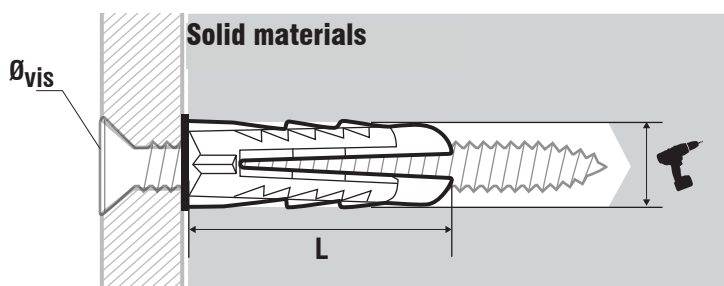
### Advantages:

- **Versatile:**
  - Suits all materials
  - Can be used with wood screws, metric screws, nails ...
- **Powerful:**
  - Strong fixing in all material types.
  - Anti-rotation wings for an optimum grip.
- **Robust:**
  - Unbreakable polypropylen.
- **Handy:**
  - 25 plugs cluster.

## INSTALLATION



## DIMENSIONS & APPLICATION DATAS



Ø	L	T	Ø <sub>vis</sub>	Reference
mm	mm	mm		
<b>6.0</b>	25	6	VBA 3 à 5 mm	<b>MUTP06</b>
<b>8.0</b>	30	8	VBA 4 à 7 mm	<b>MUTP08</b>
<b>8.0 PAV</b>	30	8	Patte à vis M5 à M7	<b>MUTP08M</b>
<b>10.0</b>	45	10	VBA 5 à 9 mm	<b>MUTP10</b>