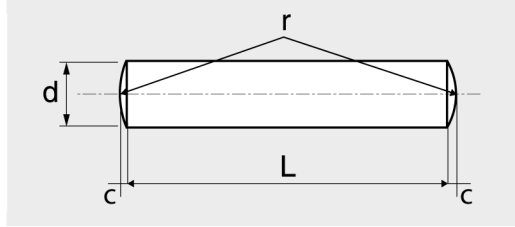


GOUPILLES CYLINDRIQUES

CYLINDRICAL PINS

ZYLINDERSTIFTE

PASADORES CILINDRICOS



d (m6)	1	1,5	2	2,5	3	4	5	6	8	10
c	0,15	0,23	0,3	0,4	0,45	0,6	0,75	0,9	1,2	1,5
r	1	1,6	2	2,5	3	4	5	6	8	10

d x L	Code	Cond.	Sur-cond.	kg/100
1X4	627031X4	200	20000	0,003
1X5	627031X5	200	20000	0,003
1X6	627031X6	200	20000	0,050
1X8	627031X8	200	20000	0,500
1X10	627031X10	200	20000	0,010
1X12	627031X12	200	20000	0,007
1,5X4	627031,5X4	200	20000	0,006
1,5X5	627031,5X5	200	20000	0,100
1,5X6	627031,5X6	200	20000	0,020
1,5X8	627031,5X8	200	20000	0,011
1,5X10	627031,5X10	200	20000	0,014
1,5X12	627031,5X12	200	20000	0,017
1,5X14	627031,5X14	200	20000	0,020
1,5X16	627031,5X16	200	20000	0,022
2X5	627032X5	100	10000	0,013
2X6	627032X6	100	10000	0,017
2X8	627032X8	100	10000	0,020
2X10	627032X10	100	10000	0,025
2X12	627032X12	100	10000	0,030
2X14	627032X14	100	10000	0,035
2X16	627032X16	100	10000	0,040
2X18	627032X18	100	10000	0,045
2X20	627032X20	100	10000	0,051
2X24	627032X24	100	10000	0,061
2X28	627032X28	100	3800	0,060
2X32	627032X32	100	3800	0,070
2,5X4	627032,5X4	100	10000	0,017
2,5X5	627032,5X5	100	10000	0,020
2,5X6	627032,5X6	100	10000	0,024
2,5X8	627032,5X8	100	10000	0,032
2,5X10	627032,5X10	100	10000	0,040
2,5X12	627032,5X12	100	10000	0,047
2,5X14	627032,5X14	100	10000	0,055
2,5X16	627032,5X16	100	3800	0,063
2,5X18	627032,5X18	100	3800	0,071
2,5X20	627032,5X20	100	3800	0,078
2,5X24	627032,5X24	100	3800	0,094
3X5	627033X5	100	10000	0,027
3X6	627033X6	100	10000	0,036
3X8	627033X8	100	10000	0,049
3X10	627033X10	100	10000	0,058
3X12	627033X12	100	10000	0,069

d x L	Code	Cond.	Sur-cond.	kg/100
3X14	627033X14	100	10000	0,080
3X16	627033X16	100	10000	0,091
3X18	627033X18	100	10000	0,102
3X20	627033X20	100	10000	0,113
3X24	627033X24	100	10000	0,135
3X28	627033X28	100	10000	0,157
3X30	627033X30	100	10000	0,168
3X32	627033X32	100	3800	0,179
3X36	627033X36	100	3800	0,201
3X40	627033X40	100	3800	0,223
4X6	627034X6	100	10000	0,064
4X8	627034X8	100	10000	0,084
4X10	627034X10	100	10000	0,104
4X12	627034X12	100	10000	0,123
4X14	627034X14	100	10000	0,144
4X16	627034X16	100	3800	0,163
4X18	627034X18	100	3800	0,183
4X20	627034X20	100	3800	0,203
4X24	627034X24	100	3800	0,243
4X28	627034X28	100	3800	0,282
4X30	627034X30	100	3800	0,300
4X32	627034X32	100	3800	0,321
4X36	627034X36	100	3800	0,360
4X40	627034X40	100	3800	0,400
4X45	627034X45	100	3800	0,440
4X50	627034X50	100	3800	0,480
5X8	627035X8	100	10000	0,133
5X10	627035X10	100	3800	0,164
5X12	627035X12	100	3800	0,195
5X14	627035X14	100	3800	0,226
5X16	627035X16	100	3800	0,257
5X18	627035X18	100	3800	0,296
5X20	627035X20	100	3800	0,319
5X24	627035X24	100	3800	0,380
5X28	627035X28	100	3800	0,442
5X30	627035X30	100	3800	0,472
5X32	627035X32	100	3800	0,503
5X36	627035X36	100	3800	0,565
5X40	627035X40	100	1800	0,627
5X45	627035X45	100	1800	0,703
5X50	627035X50	100	1800	0,780
5X60	627035X60	100	1800	0,857

Inox A1

62 703
DIN 7 - (similar ISO 2338)

GOUPILLES CYLINDRIQUES

PAGE PRECEDENTE

d x L	Code	Cond.	Sur-cond.	kg/100
6X8	627036X8	100	10000	0,197
6X10	627036X10	100	3800	0,241
6X12	627036X12	100	3800	0,285
6X14	627036X14	100	3800	0,329
6X16	627036X16	100	3800	0,373
6X18	627036X18	100	3800	0,417
6X20	627036X20	100	3800	0,481
6X24	627036X24	100	3800	0,550
6X28	627036X28	100	3800	0,640
6X30	627036X30	100	3800	0,700
6X32	627036X32	100	1800	0,730
6X36	627036X36	100	1800	0,819
6X40	627036X40	100	1800	0,908
6X45	627036X45	100	1800	1,020
6X50	627036X50	100	1800	1,130
6X55	627036X55	100	1800	1,240
6X60	627036X60	100	800	1,350
8X10	627038X10	100	3800	0,437
8X12	627038X12	100	3800	0,532
8X14	627038X14	100	3800	0,604
8X16	627038X16	100	3800	0,674
8X18	627038X18	100	3800	0,773
8X20	627038X20	100	3800	0,852
8X24	627038X24	100	1800	0,989
8X28	627038X28	100	1800	1,150

d x L	Code	Cond.	Sur-cond.	kg/100
8X30	627038X30	100	1800	1,250
8X32	627038X32	100	1800	1,300
8X36	627038X36	100	800	1,460
8X40	627038X40	50	900	1,620
8X45	627038X45	50	900	1,810
8X50	627038X50	50	900	2,010
8X55	627038X55	50	900	2,210
8X60	627038X60	50	900	2,400
8X70	627038X70	50	900	2,800
8X80	627038X80	50	900	3,200
10X12	6270310X12	50	1900	0,824
10X16	6270310X16	50	1900	1,070
10X20	6270310X20	50	1900	1,320
10X24	6270310X24	50	1900	1,560
10X28	6270310X28	50	900	1,800
10X32	6270310X32	50	900	2,060
10X36	6270310X36	50	900	2,310
10X40	6270310X40	50	900	2,550
10X45	6270310X45	50	900	2,860
10X50	6270310X50	50	900	3,170
10X60	6270310X60	50	400	3,790
10X70	6270310X70	50	400	4,410
10X80	6270310X80	50	400	5,030
10X90	6270310X90	50	400	5,650
10X100	6270310X100	50	400	6,270



Classe de précision m6 (tolérance)