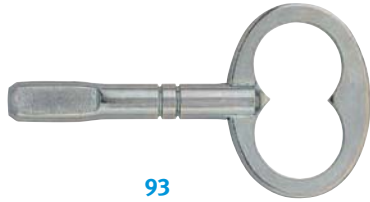
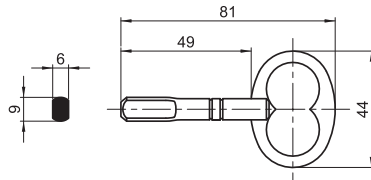


# Clés de batteuses




93



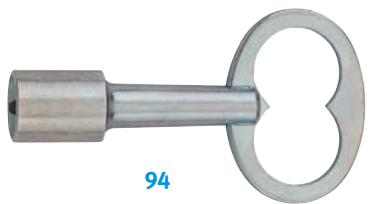
## Clé à rectangle GDF

6 x 9 mm

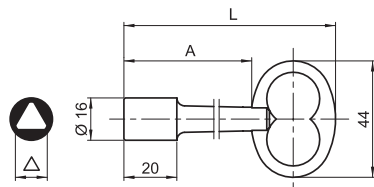
Acier zingué

Réf.	
93	31 g

pour batteuses 201 – 1201 – 2201 – 2011 – 12011



94




## Clé à triangle EDF de 11 mm

Acier zingué

Version standard L = 80 mm

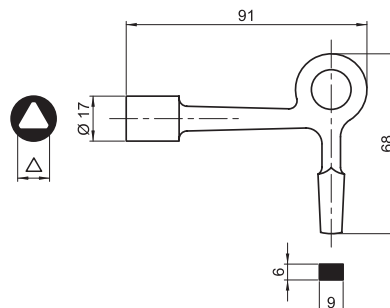
Version longue L = 125 mm

Réf.	L	A		
94	80	48	48 g	
94.010	125	93	78 g	

pour batteuses 202 – 203 – 1203 – 2203  
4063 – 4463 – 2021




95



## Clé mixte EDF – GDF

Triangle de 11 et rectangle de 9 x 6 mm  
Fonte polie

Réf.		
95	73 g	