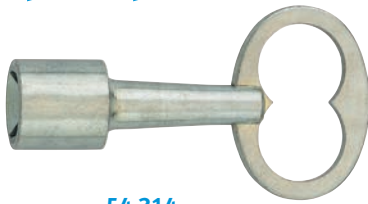
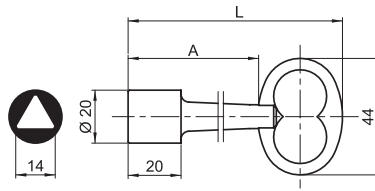


# Clés à triangle

## pompier



54.314




### Clé à triangle pompier de 14 mm

Acier zingué

Version standard L = 80 mm

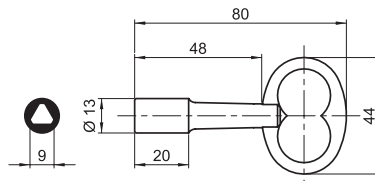
Version longue L = 125 mm

Réf.	L	A	
54.314	80	49	64 g
54.314A	125	93	101 g

## ascenseur





54.329



### Clé à triangle ascenseur de 9 mm

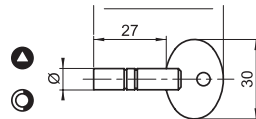
Norme NF EN 81 ou CNOM02

Acier zingué

Réf.		
54.329	9	44 g






88.305



### Clé de cadenas d'artillerie

À triangle ou demi-lune

Acier zingué

Réf.		Ø	
88.304	△ 4	7	16 g
88.305	△ 5	8	18 g
88.901		8	17 g