

SARS-CoV-2 Spike Protein Impairs Endothelial Function via Downregulation of ACE2

Yuyang Lei^{1, 2,*}, Jiao Zhang^{1, 2, 3,*}, Cara R. Schiavon^{4, 5}, Ming He³, Lili Chen², Hui Shen^{3, 6}, Yichi Zhang³, Qian Yin², Yoshitake Cho³, Leonardo Andrade⁴, Gerry S. Shadel⁵, Mark Hepokoski⁷, Ting Lei⁸, Hongliang Wang⁹, Jin Zhang¹⁰, Jason X.-J. Yuan⁷, Atul Malhotra⁷, Uri Manor⁴, Shengpeng Wang², Zu-Yi Yuan¹, and John Y.-J. Shyy³

¹Department of Cardiology, First Affiliated Hospital of Xi'an Jiaotong University, Xi'an, China; ²Cardiovascular Research Center, School of Basic Medical Sciences, Xi'an Jiaotong University Health Science Center, Xi'an, China; ³Division of Cardiology, Department of Medicine, University of California, San Diego, La Jolla, CA; ⁴Waite Advanced Biophotonics Center, Salk Institute for Biological Studies, La Jolla, CA; ⁵Molecular and Cellular Biology Laboratory, Salk Institute for Biological Studies, La Jolla, CA, USA; ⁶Department of Cardiology, the Affiliated Hospital of Yangzhou University, Yangzhou, China; ⁷Division of Pulmonary, Critical Care and Sleep Medicine, Department of Medicine, University of California, San Diego, La Jolla, CA. ⁸Department of Pathology, School of Basic Medical Sciences, Xi'an Jiaotong University Health Science Center, Xi'an, China; ⁹Department of pathogen biology and immunology, School of Basic Medical Sciences, Xi'an Jiaotong University Health Science Center, Xi'an, China; ¹⁰Department of Pharmacology, University of California, San Diego, La Jolla, CA;

*These authors contributed equally to this work

Address for Correspondence:

John Y.-J. Shyy, PhD
Division of Cardiology, Department of Medicine
University of California, San Diego
9500 Gilman Dr., La Jolla, CA 92093
Tel: 858-534-3736
Email: jshyy@health.ucsd.edu

Zu-Yi Yuan, MD, PhD
Department of Cardiology
First Affiliated Hospital of Xi'an Jiaotong University
277 Yanta West Road, Xi'an 710061, China
Tel: (+8629)-85323819
E-mail: zuyiyuan@mail.xjtu.edu.cn

Shengpeng Wang, PhD
Cardiovascular Research Center
School of Basic Medical Sciences

Xi'an Jiaotong University Health Science Center
277 West Yanta Road, Xi'an 710061, China
Tel: +86-1806-672-0583
E-mail: shengpeng.wang@xjtu.edu.cn

Uri Manor, PhD
Waitt Advanced Biophotonics Center
Salk Institute for Biological Studies
10010 N Torrey Pines Rd, La Jolla, CA 92037
E-mail: umanor@salk.edu

Key words: SARS-CoV-2, spike protein, endothelial function, ACE2, mitochondrial function

Abstract

Coronavirus disease 2019 (COVID-19) includes the cardiovascular complications in addition to respiratory disease. SARS-CoV-2 infection impairs endothelial function and induces vascular inflammation, leading to endotheliitis. SARS-CoV-2 infection relies on the binding of Spike glycoprotein (S protein) to angiotensin converting enzyme 2 (ACE2) in the host cells. We show here that S protein alone can damage vascular endothelial cells (ECs) in vitro and in vivo, manifested by impaired mitochondrial function, decreased ACE2 expression and eNOS activity, and increased glycolysis. The underlying mechanism involves S protein downregulation of AMPK and upregulation of MDM2, causing ACE2 destabilization. Thus, the S protein-exerted vascular endothelial damage via ACE2 downregulation overrides the decreased virus infectivity.

Clinical data from coronavirus disease 2019 (COVID-19) underscore the cardiovascular complications in addition to respiratory disease involved in this deadly disease. SARS-CoV-2 infection relies on the binding of Spike glycoprotein (S protein) to angiotensin converting enzyme 2 (ACE2) in the host cells. Vascular endothelium is a key tissue infected and damaged by SARS-CoV-2.¹ SARS-CoV-2 infection triggers mitochondrial ROS production and promotes glycolytic shift.² Paradoxically, ACE2 exerts a protective effect on the cardiovascular system, and SARS-CoV-1 S protein has been shown to promote lung injury by decreasing the level of ACE2 in the infected lungs.³ In the current study, we show that S protein alone can damage vascular endothelial cells (ECs) by downregulating ACE2 and consequently inhibiting mitochondrial function.

To examine whether S protein causes lung damage in the infected host, we administered a pseudovirus expressing S protein (Pseu-Spike) to hamsters intratracheally. Lung damage was apparent in animals receiving Pseu-Spike, revealed by thickening of the alveolar septa and increased infiltration of mononuclear cells (Figure 1A). AMPK phosphorylates ACE2 Ser-680, MDM2 ubiquitinates ACE2 Lys-788, and crosstalk between AMPK and MDM2 determines the ACE2 expression level.⁴ In the damaged lungs, levels of phospho-AMPK (pAMPK), phospho-ACE2 (pACE2), and ACE2 decreased but those of MDM2 increased (Figure 1Ba). Furthermore, complementary increased and decreased phosphorylation of eNOS Thr-494 and Ser-1176 indicated impaired eNOS activity. These changes of pACE2/ACE2 and MDM2 expression and AMPK activity in the endothelium by S protein were recapitulated by *in vitro* experiments using cultured pulmonary arterial ECs (PAECs) infected with Pseu-Spike which was rescued by treatment with N-acetyl-L-cysteine (NAC), the ROS inhibitor (Figure 1Bb).

Since mitochondrial homeostasis has a profound effect on EC function, we next studied the impact of S protein on mitochondrial function. Double-blind analysis of confocal images of

ECs treated with S1 protein revealed increased mitochondrial fragmentation, indicating altered mitochondrial dynamics (Figure 1Ca). To examine whether these changes in mitochondrial morphology were due, in part, to the decreased amount of ACE2, we overexpressed ACE2 S680D (ACE2-D, a phospho-mimetic ACE2 with increased stability) or S680L (ACE2-L, a dephospho-mimetic with decreased stability)⁴ in ECs. As shown in Figure 1Cb, ECs with ACE2-L overexpression had a higher number of fragmented mitochondria when compared to those with ACE2-D. Next, we performed Seahorse Flux analysis to compare the effect of ACE2-D versus ACE2-L on mitochondrial function. Seahorse Flux analysis showed ECs overexpressing ACE2-L had reduced basal mitochondrial respiration, ATP production, and maximal respiration compared to ECs overexpressing ACE2-D (Figure 1Da). Moreover, ACE2-L overexpression caused increased basal acidification rate, glucose-induced glycolysis, maximal glycolytic capacity, and glycolytic reserve (Figure 1Db). To explore the molecular basis underlying ACE2 regulation of mitochondrial and glycolytic alterations, we assessed the expression levels of mitochondria- and glycolysis-related genes in lung ECs isolated from ACE2-D or ACE2-L knock-in mice⁴. As shown in Figure 1E, the mRNA levels of NRF1, HO1, and TFAM (mitochondria biogenesis related genes) were increased, whereas those of HK2, PFKFB3, and ENO2 (glycolysis related genes) were decreased in the lung ECs in ACE2-D mice, as compared with those in ACE2-L mice.

SARS-CoV-2 infection impairs EC function and induces inflammation, leading to endotheliitis.^{1,5} Because S protein decreased the level of ACE2 and impaired eNOS derived-NO bioavailability, we examined whether S protein entry is indispensable for dysfunctional endothelium *in vivo*. As shown in Figure 1Fa, the endothelium-dependent vasodilation induced by acetylcholine (ACh) was impaired in pulmonary arteries isolated from Pseu-Spike-administered hamsters, whereas the endothelium-independent vasodilation induced by sodium nitroprusside

(SNP) was not affected by Pseu-Spike. To further confirm that EC-dependent vasodilation is correlated with ACE2 expression level, we compared the ACh- and SNP-induced vasodilation of pulmonary vessels from ACE2-D or ACE2-L mice. As anticipated, ACh-induced vasodilation was significantly hindered in pulmonary arteries isolated from ACE2-L mice in comparison to ACE2-D mice (Figure 1Fb). There was, however, no difference of SNP-induced vasodilation in ACE2-D and ACE-L animals.

Our data herein reveals that S protein alone can damage endothelium, manifested by impaired mitochondrial function and eNOS activity but increased glycolysis. The S protein-mediated endothelial impairment depends on ACE2 post-translational modifications. It appears that S protein in ECs increases redox stress which may lead to AMPK deactivation, MDM2 upregulation, and ultimately ACE2 destabilization.⁴ It seems paradoxical that ACE2 reduction by S protein would decrease the virus infectivity, thereby protecting endothelium. However, a dysregulated renin-angiotensin system due to ACE2 reduction may exacerbate endothelial dysfunction, leading to endotheliitis. Collectively, our results suggest that the S protein-exerted EC damage overrides the decreased virus infectivity. This conclusion suggests that vaccination-generated antibody and/or exogenous antibody against S protein not only protects the host from SARS-CoV-2 infectivity but also inhibits S protein-imposed endothelial injury and ultimately decrease cardiovascular complication-associated mortality in COVID-19 patients.

Data availability

The data that support the findings of this study are available from the corresponding author upon request.

Sources of Funding

This work was supported in part by grants from the National Institutes of Health grants R01HL106579 and R01HL140898 (J.S.); the National Natural Science Foundation of China 81870220 (S.P.W.); Shaanxi Natural Science Fund for Distinguished Young Scholars of China S2020-JC-JQ-0239 (S.P.W.).

Disclosures

None.

References

1. Teuwen L-A, Geldhof V, Pasut A and Carmeliet P. COVID-19: the vasculature unleashed. *Nat Rev Immunol.* 2020;20:389-391.
2. Codo AC, Davanzo GG, Monteiro LdB, et al. Elevated glucose levels favor SARS-CoV-2 infection and monocyte response through a HIF-1 α /Glycolysis-dependent axis. *Cell Metab.* 2020;32:437-446.
3. Kuba K, Imai Y, Rao S, et al. A crucial role of angiotensin converting enzyme 2 (ACE2) in SARS coronavirus-induced lung injury. *Nat Med.* 2005;11:875-879.
4. Shen H, Zhang J, Wang C, et al. MDM2-mediated ubiquitination of angiotensin-converting enzyme 2 contributes to the development of pulmonary arterial hypertension. *Circulation.* 2020;142:1190-1204.
5. Varga Z, Flammer AJ, Steiger P, et al. Endothelial cell infection and endotheliitis in COVID-19. *Lancet.* 2020;395:1417-1418.

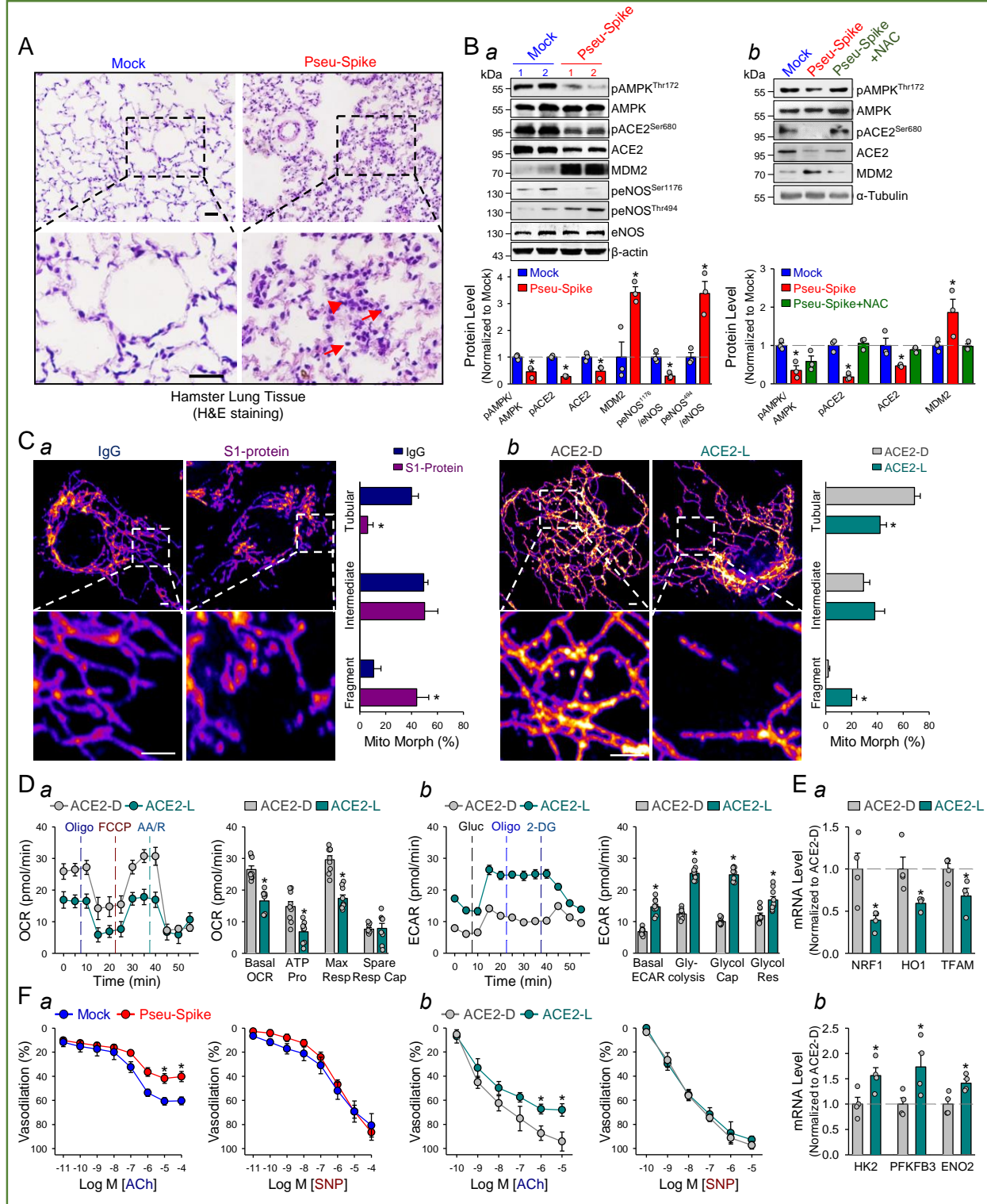


Figure legends

SARS-CoV-2 Spike protein exacerbates EC function via ACE2 downregulation and

mitochondrial impairment. A, Representative H&E histopathology of lung specimens from 8-12 week-old male hamsters 5-day post administration of pseudovirus overexpressing Spike protein (Pseu-Spike) or those receiving mock virus in control group (n=3 mice per group, 5×10^8 PFU).

Thickened alveolar septa (red arrowhead) and mononuclear cell (red arrow). Scale bar = 20 μ m.

B, Lung tissues isolated from the Pseu-Spike (n=3) or mock virus (n=3)-infected hamsters were subjected to Western blot analysis for pAMPK T172, AMPK, pACE2 S680, ACE2, MDM2, p-eNOS S1176, p-eNOS T494, eNOS, and β -actin (**Ba**).

Human pulmonary artery endothelial cells (PAECs) were infected with Pseu-Spike or mock virus for 24 hr with or without NAC (5 nmol/L) pre-treatment for 2 hr. The protein extracts were analyzed by Western blot using antibody for pAMPK T172, AMPK, pACE2 S680, ACE2, MDM2 and α -tubulin (n=3) (**Bb**).

C, Representative confocal images of mitochondrial morphology of EC treated with recombinant S1 protein or human IgG (4 μ g/ml) for 24 hr (**Ca**) or infected with human adenovirus ACE2 S680D (ACE2-D) or ACE2 S680L (ACE2-L) (10 MOI) for 48 hr (**Cb**).

Mitochondria were visualized using TOM20 antibody (n=3, 50 cells counted for each replicate). Scale bar = 2.5 μ m. **D,** Seahorse Flux assay of oxygen consumption rate (OCR, **Da**) and extracellular acidification rate (ECAR, **Db**) in ECs infected with ACE2-D or ACE2-L (10 MOI) for 48 hr (n=3).

E, RT-qPCR analysis of the indicated mRNA levels in lung ECs from ACE2-D (n=4) and ACE2-L (n=4) knock-in mice.

F, Dose-response curves of acetylcholine (ACh, left panels)- and sodium nitroprusside (SNP, right panels)-mediated relaxation on the tension of phenylephrine (1 μ mol/L) precontracted intrapulmonary artery stripes from Pseu-Spike-(ACh n=8, SNP n=5) or mock-(ACh n=6, SNP n=5) virus infected hamsters (5×10^8 PFU) (**Fa**) and ACE2-D (n=6) or ACE2-L (n=5) mice (**Fb**). The animal

experiments were approved by the ethical committee of Xi'an Jiaotong University. Data are mean values \pm SEM; * $p < 0.05$ (two-tailed Student-*t* test in Ba, C, D, E, F and one-way ANOVA in Bb).