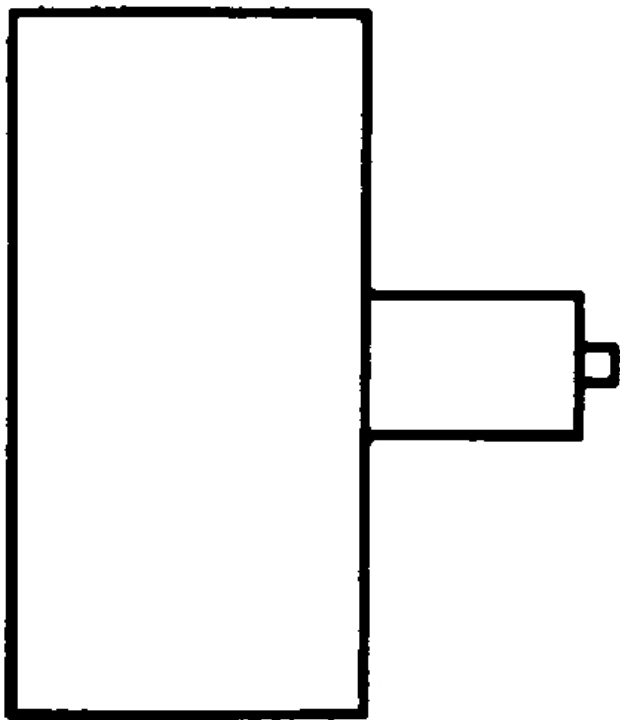


## Glycerine filled Bourdon tube pressure gauges RF80EGly

Part no. 85175712

Glycerine filled Bourdon tube pressure gauges



### Technical Specifications

**Type**

D7

**Nominal size**

80

**accuracy class (EN 837-1/6)**

1.6

**ranges (EN 837-1/5)**

see ordering table

**application area**

static load:  $\frac{3}{4}$  x full scale value  
dynamic load:  $\frac{2}{3}$  x full scale value  
short-term: Full scale value

**Operating temperature range**

Ambient: -20/+60 °C

**Degree of protection**

IP 65 (EN 60529)

**Connection**

stainless steel 316 Ti/316 L, centre back

**Measuring element**

Bourdon tube

**movement**

Brass

**Dial**

Aluminium, white  
Scaling: black  
RF80EGly

**Pointer**

Aluminium, black

**Housing**

Stainless steel 304, with blow-out

**crimped bezel**

Stainless steel 304

**window**

Plastic

**filling liquid**

glycerine (99.5 %)

## Versions

Range	Mounting type	Type		Part number
0/1000 bar	direct	RF80EGly D712	<input type="radio"/>	85175712

- in-stock items
- Non-stock items