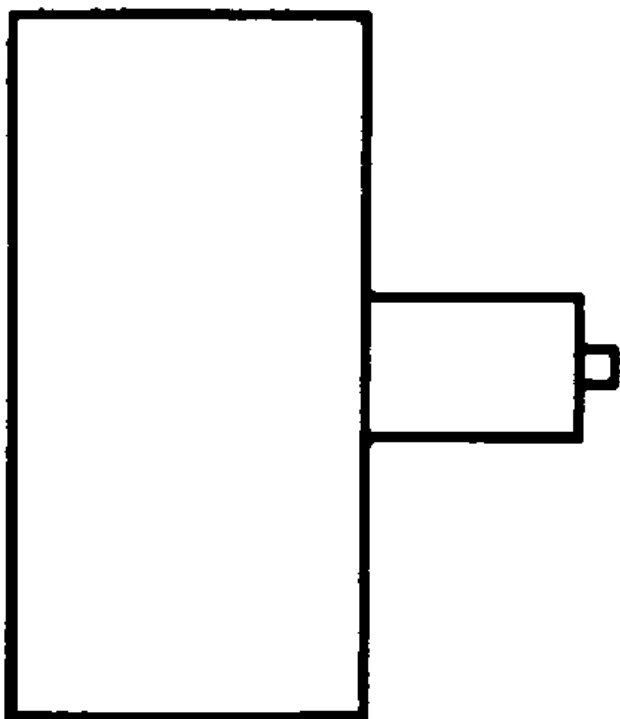


Glycerine filled Bourdon tube pressure gauges RF100EGly

Part no. 85214712

Glycerine filled Bourdon tube pressure gauges



Technical Specifications

Type

D7

Nominal size

100

accuracy class (EN 837-1/6)

1.6

ranges (EN 837-1/5)

see ordering table

application area

static load: $\frac{3}{4}$ x full scale value
dynamic load: $\frac{2}{3}$ x full scale value
short-term: Full scale value

Operating temperature range

Ambient: -20/+60 °C

Degree of protection

IP 54 (EN 60529)

Connection

stainless steel 316 Ti/316 L, centre back

Measuring element

Bourdon tube

movement

Brass

Dial

Aluminium, white
Scaling: black
RF100EGly

Pointer

Aluminium, black

Housing

Stainless steel 304, with blow-out

crimped bezel

Stainless steel 304

window

Plastic

filling liquid

glycerine (99.5 %)

Versions

Range	Mounting type	Type		Part number
0/6 bar	direct	RF100EGly D712	<input type="radio"/>	85214712

- in-stock items
- Non-stock items