

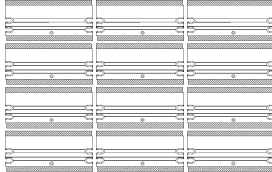


NEW

# Travertina Raw

**DESCRIPTION:** Double-sided wall **TEXTURE:** Travertine

## PALLET OVERVIEW



## COMPATIBLE CAPS

See page 101 for product compatibility.

## NOTES

The dimensional tolerance for Stonedge wet cast retaining wall units is:  $\pm 3/16"$  (5 mm) for height and  $\pm 1/2"$  (13 mm) for length and width. During the installation, the level between adjacent wall units will vary (usually more than for a dry cast wall unit) in order to obtain a more realistic appearance of a natural stone wall.

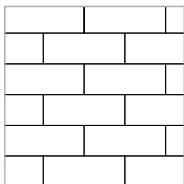
See page 97 to 118 for more technical information.

Specifications per pallet	Imperial	Metric
Cubing	<b>31.75 ft<sup>2</sup> /pal</b>	2.95 m <sup>2</sup> /pal
	63.5 lin. ft /pal	19.36 lin. m /pal
Weight	2 850 lbs	1 292 kg
Number of rows	4	
Coverage per units	0.66 ft <sup>2</sup> /unit	0.06 m <sup>2</sup> /unit
Coverage per row	7.94 ft <sup>2</sup> /row	0.74 m <sup>2</sup> /row
Linear coverage per row	15.88 lin. ft/row	4.84 lin. m/row

Unit dimensions	in		mm		Units/pallet
	L	H	A		
Height		6	152		48 units
Depth		7 <sup>15</sup> / <sub>16</sub>	202		
Length		15 <sup>7</sup> / <sub>8</sub>	403		



## 01 | Linear pattern



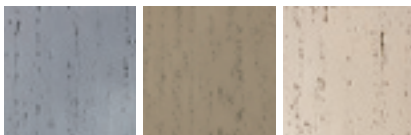
Patterns are for design inspiration only. The installer is responsible to calculate & purchase the correct amount of material.

Visit our website for more patterns.

riviera

rock garden brown

ivory





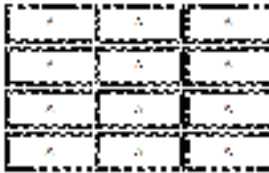
**Stonedge**  
COLLECTION

**NEW**

# Travertina Raw

**DESCRIPTION:** Corners and pillars **TEXTURE:** Travertine

## PALLET OVERVIEW



## COMPATIBLE CAPS

See page 101 for product compatibility.

## NOTES

The dimensional tolerance for Stonedge wet cast retaining wall units is:  $\pm 3/16"$  (5 mm) for height and  $\pm 1/2"$  (13 mm) for length and width. During the installation, the level between adjacent wall units will vary (usually more than for a dry cast wall unit) in order to obtain a more realistic appearance of a natural stone wall.

See page 97 to 118 for more technical information.

Specifications per pallet	Imperial	Metric
Cubing	<b>24 units</b>	24 units
Weight	1 535 lbs	696 kg
Number of rows	2	
Pillar height	36"	914 mm



**A**



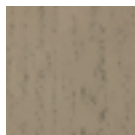
Unit dimensions	in	mm	Units/pallet
Height	6	152	24 units
Depth	7 <sup>15</sup> / <sub>16</sub>	202	
Length	15 <sup>7</sup> / <sub>8</sub>	403	

WALLS & PILLARS

riviera



rock garden brown



ivory

