



Architectural
Series
by

Get
Real
Stone®

Table of Contents

About Get Real Stone®?		Page 2
Stone Glossary & Nomenclature		Page 3
Carolina Collection	Mosaic	Page 4-5
	Random Ashlar	Page 6-7
	Splitface Ledge	Page 8-9
	Uniform Ledge	Page 10-11
Highlands Collection	Gatlinburg™	Page 12-13
	Pigeon Forge™	Page 14-15
	Arlington™	Page 16
	Tennessee River Rock™	Page 17
Architectural Series Packaging		Page 17
Architectural Accessories		Page 18
Irregular Flagstone		Page 19
Boulders		Page 20
Other Products		Page 21
Custom Fabrication		Page 22
Notes		Page 23



www.GetRealStone.com

Cover Photo: Coyote Gray Random Ashlar
Photo Courtesy of Samson Stone



About Get Real Stone®

Get Real Stone® is a brand of quality natural stone products mined in the mountains of North Carolina and surrounding regions. As the name implies, our stone is 100% real.

Our diversified line of products includes our signature Architectural Series™ thin stone veneer, made available to the public through an ever-expanding network of dealers throughout the US. Our partners share our commitment to a high level of quality control and customer service.

DISCLAIMER

Photos shown herein depict general colors and textures only. As with any natural building material, color and texture may vary considerably.

(†) Denotes stones that contain a high concentration of iron and may oxidize over time if exposed to the elements. In cases where these products are used for exterior projects, sealing the stone may help reduce or prevent the effect.

Get Real Stone® & its affiliates assume no liability in cases where these guidelines have not been followed. Get Real Stone® & its affiliates assume no liability for installed materials. Get Real Stone® & its affiliates assume no liability for typographical errors in this catalog or any other marketing materials produced by, or on behalf of, Get Real Stone®.

Stone Glossary & Nomenclature

Veneer - Decorative stone applied to the surface of vertical walls. The term refers to the material applied as well as to the process of covering the wall. Many of our veneer stones are available in varying bed depths (thickness) as described below:

Thin Veneer - Stone veneer with a bed depth (thickness) ranging from 1" to 1 1/2". Our Architectural Series™ thin veneer meets the weight specifications of the Uniform Building Code (15 Lbs/SqFt or less).

Medium Veneer - Stone veneer with a bed depth (thickness) ranging from 2" to 4".

Full-Bed Veneer - Stone veneer with a bed depth (thickness) ranging from 3" to 5". Full-bed veneer typically requires an additional footing to support the weight of the stone facade.



Bed Face - A face on a stone formed by a natural seam in the rock along the planes of stratification.

Split Face - A face on a stone running perpendicular to the bed face. This face usually reveals the stratification of the rock.

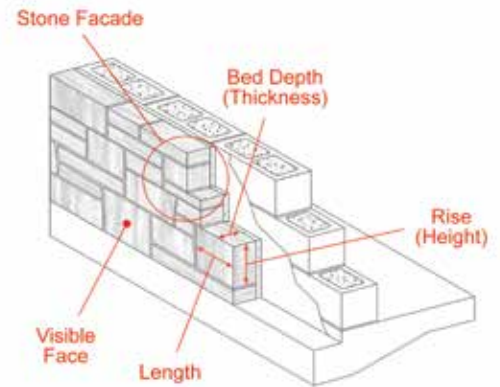
Facade - The finished face of a vertical wall.

Bed Depth (Thickness) - The dimension of a stone, when laid as a facade, from the visible face of the stone to the opposing parallel face (I.E.: front to back).

Rise (Height) - The vertical dimension of a stone when laid as a facade.

Length - The horizontal dimension of a stone when laid as a facade.

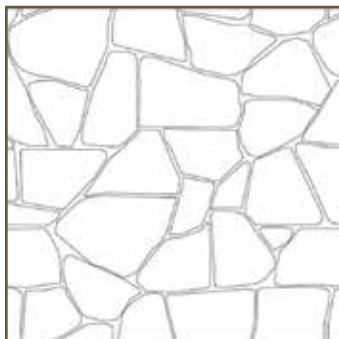
Visible Face - The surface of stone that is easily visible when looking at a completed veneer installation.



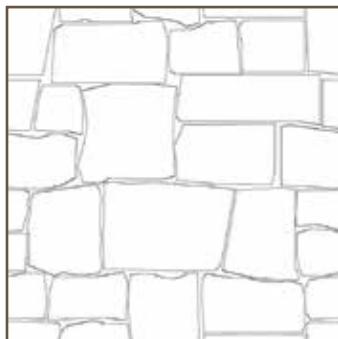
Mosaic - Stone that is generally irregular in shape with no definite pattern.

Random Ashlar - Stone that has been manually cut, or dressed, into roughly square and/or rectangular shapes.

Ledgestone (or Ledge) - Stone that is typically greater in length than in rise (height).



Mosaic



Random Ashlar



Ledgestone (Ledge)

Carolina Collection

MOSAIC

RANDOM IRREGULAR SHAPE

1 1/4" Average Bed Depth (Thickness)
 Face Sizes Range From 8" x 8" to 14" x 14"
 Natural Back (Two Usable Faces)
 Matching Corners Available



Packaging

Flats ship on stackable square pallet containing 100 or 150 square feet (Odd quantities available by special order)
 Corners ship in stackable wooden crate containing 25 or 50 linear feet (Odd quantities available by special order)

Custom blends are available by special order

Available Colors



Coyote Gray™



Diamondback Ridge™ †



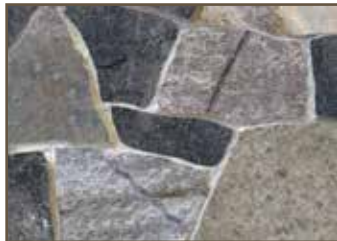
Emerald Mountain™



Grand Cayman™



Lake James™



Mount Mitchell™



Queensbury™ †



San Marcos™

Mosaic flats also available in:

Medium Thickness - 2" to 4" bed depth
 Full-Bed Thickness - 3" to 5" bed depth



Full-Bed

Medium



Santa Monica™

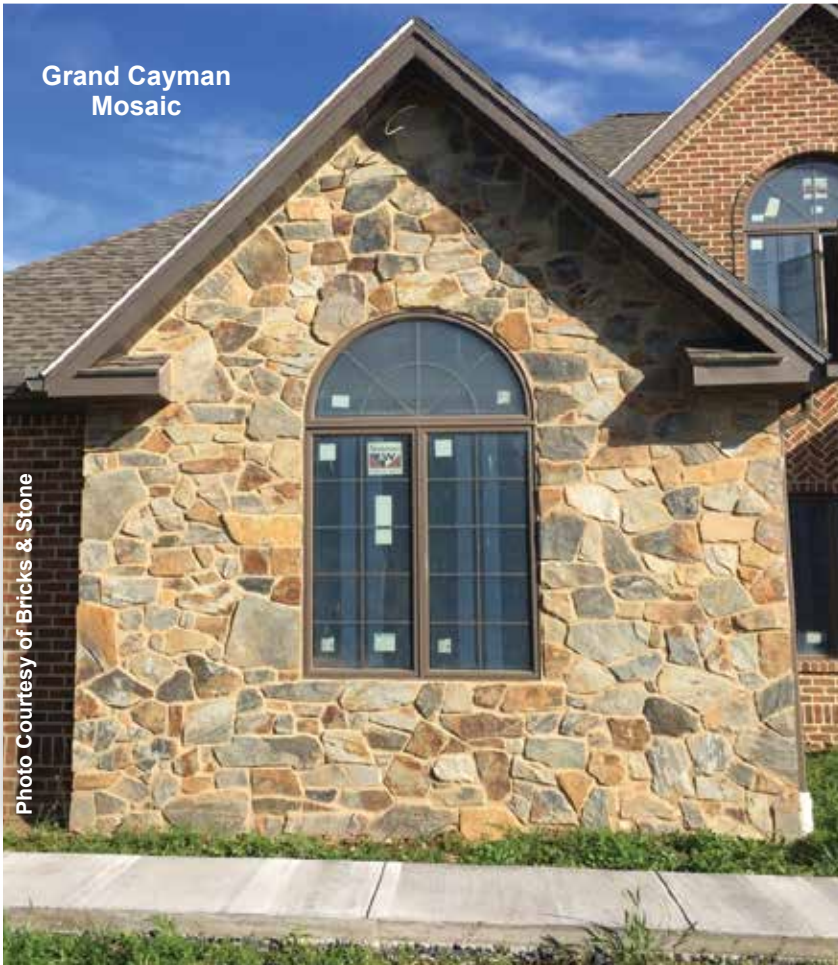


Southern Eclipse™



Photo Courtesy of Delaware Brick, Avalon Associates, & Patty Hill Photography

Blend of San Marcos & Grand Cayman Mosaic



Grand Cayman Mosaic

Photo Courtesy of Bricks & Stone



Photo Courtesy of Capital Brick

Coyote Gray Mosaic



Carolina Collection



RANDOM ASHLAR ROUGHLY RECTANGULAR SHAPE

1 1/4" Average Bed Depth (Thickness)
3" to 12" Rise (Height) | 6" to 18" Length
Natural Back (Two Usable Faces)
Matching Corners Available



Packaging

Flats ship on stackable square pallet containing 100 or 150 square feet (Odd quantities available by special order)
Corners ship in stackable wooden crate containing 25 or 50 linear feet (Odd quantities available by special order)

Custom blends are available by special order

Available Colors



Coyote Gray™



Diamondback Ridge™ †



Emerald Mountain™



Grand Cayman™



Lake James™



Mount Mitchell™



Queensbury™ †



San Marcos™



Santa Monica™



Southern Eclipse™

Random Ashlar flats also available in:

Medium Thickness - 2" to 4" bed depth
Full-Bed Thickness - 3" to 5" bed depth



Full-Bed

Medium

Coyote Gray Random Ashlar



Photo Courtesy
of Samson Stone

Queensbury
Random Ashlar

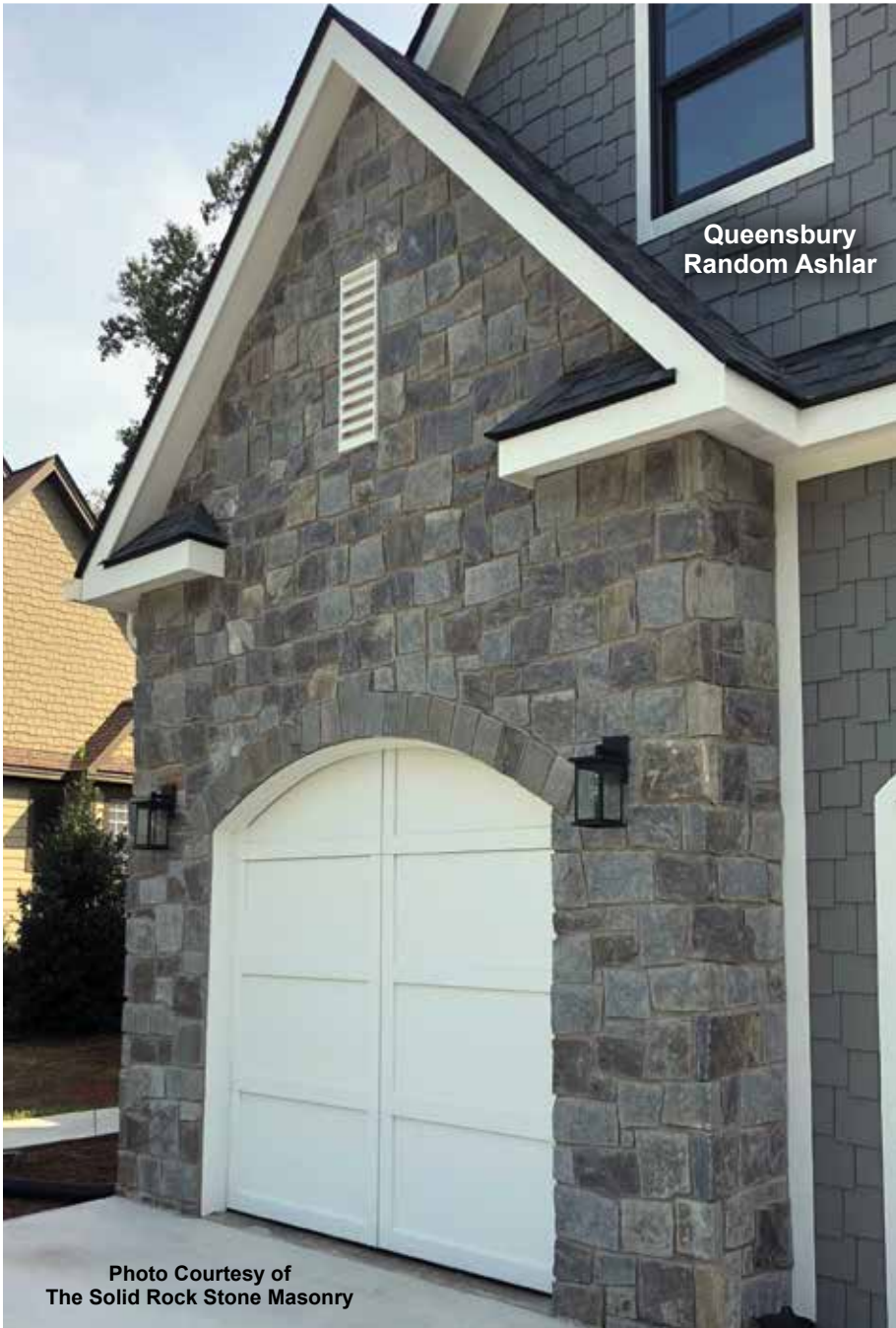


Photo Courtesy of
The Solid Rock Stone Masonry

Coyote Gray
Random Ashlar



Photo Courtesy
of Samson Stone

Carolina Collection

SPLITFACE LEDGE RUSTIC SPLITFACE LEDGESTONE

1 1/4" Average Bed Depth (Thickness)
1" to 5" Rise (Height) | Random Length
Sawed Back
Matching Corners Available



Packaging

Flats ship on stackable square pallet containing 100 or 150 square feet (Odd quantities available by special order)
Corners ship in stackable wooden crate containing 25 or 50 linear feet (Odd quantities available by special order)

Custom blends are available by special order

Available Colors



Coyote Gray™



Diamondback Ridge™ †



Emerald Mountain™



Grand Cayman™



Lake James™



Mount Mitchell™



Queensbury™ †



San Marcos™

Splitface Ledge flats also available in:

Medium Thickness - 2" to 4" bed depth
Full-Bed Thickness - 3" to 5" bed depth



Full-Bed

Medium



Santa Monica™

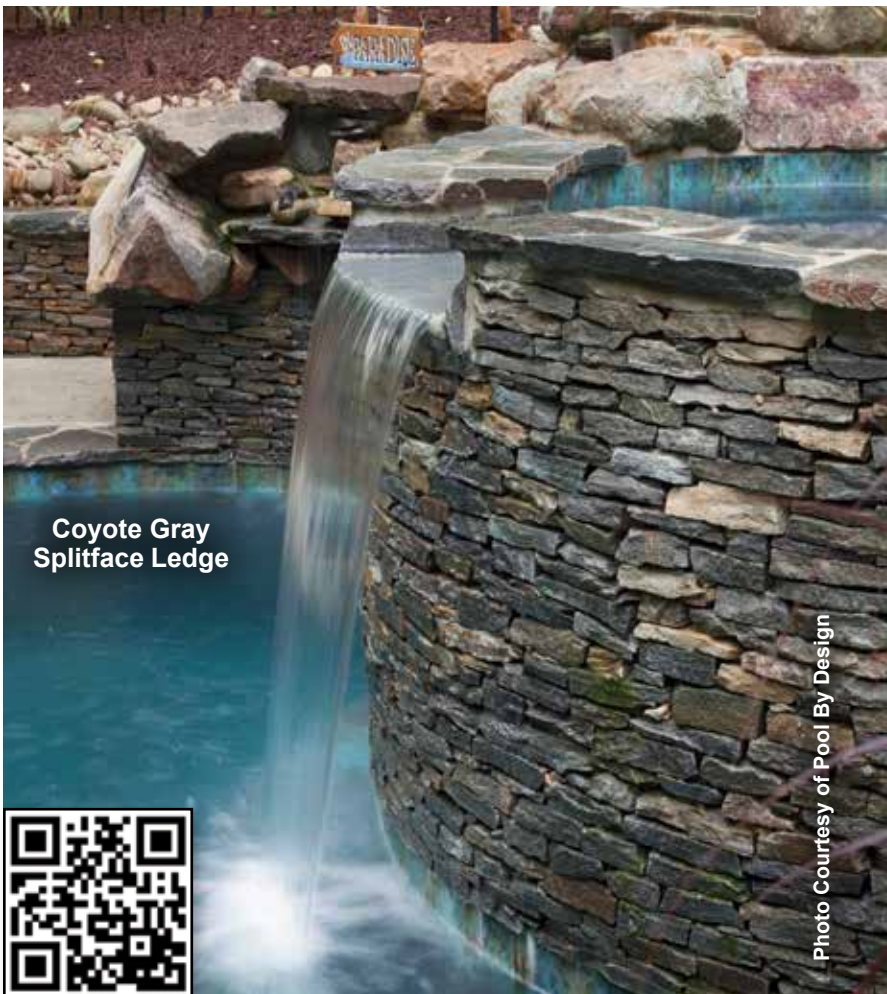


Southern Eclipse™



**Grand Cayman
Splitface Ledge**

**Photo Courtesy
of B&L Distributing**



**Coyote Gray
Splitface Ledge**

Photo Courtesy of Pool By Design



**San Marcos
Splitface Ledge**

Photo Courtesy of Black Mtn. Builders & Fernando's Stone Works

Carolina Collection



Photo Courtesy
of Sislers Stone

**Santa Monica
Uniform Ledge**

UNIFORM LEDGE

BEDFACE LEDGESTONE WITH UNIFORM RISE

1 1/4" Average Bed Depth (Thickness)
2", 4" & 6" Rise (Height) | Random Length
Natural Back (Two Usable Faces)
Sawed Top & Bottom | Untrimmed Ends
Matching Corners Available



Packaging

Flats ship on stackable square pallet containing 100 or 150 square feet (Odd quantities available by special order)
Corners ship in stackable wooden crate containing 25 or 50 linear feet (Odd quantities available by special order)

Custom blends are available by special order

Available Colors



Coyote Gray™



Diamondback Ridge™ †



Emerald Mountain™



Grand Cayman™



Lake James™



Mount Mitchell™



Queensbury™ †



San Marcos™



Santa Monica™



Southern Eclipse™

Uniform Ledge flats also available in:

Medium Thickness - 2" to 4" bed depth
Full-Bed Thickness - 3" to 5" bed depth





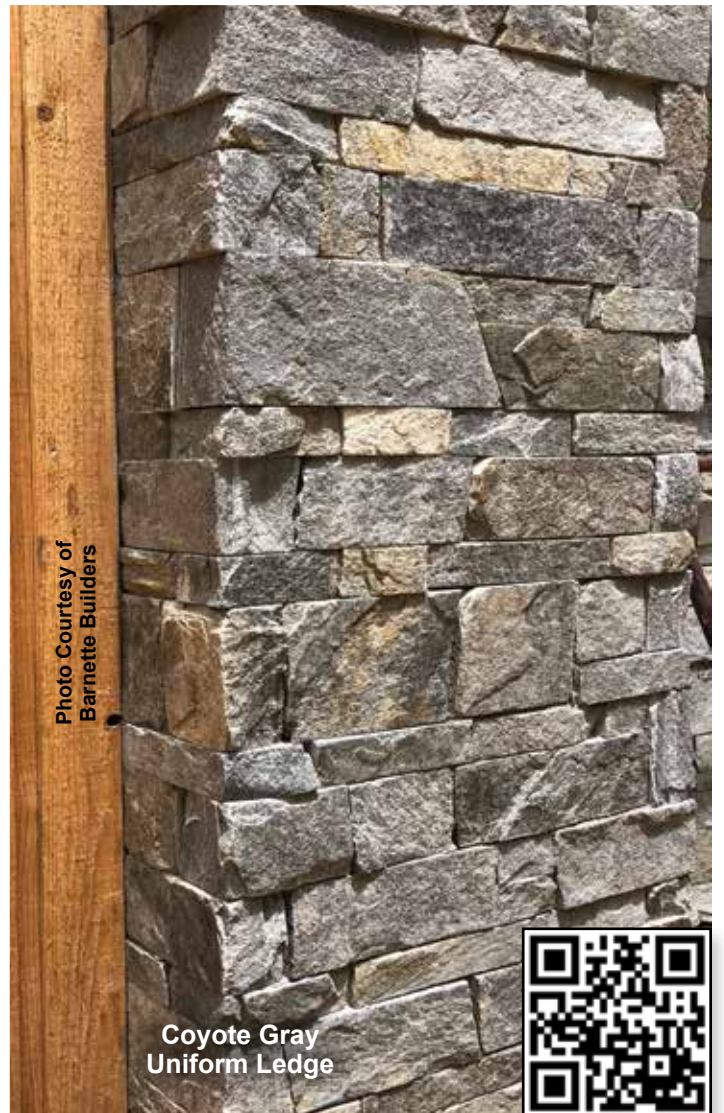
Mount Mitchell
Uniform Ledge

Photo Courtesy of
Rockwork by Steve Justus



Blend of Queensbury & Southern Eclipse
Uniform Ledge & Splitface Ledge

Photo Courtesy of
Rockwork by Steve Justus



Coyote Gray
Uniform Ledge

Photo Courtesy of
Barnette Builders



Highlands Collection

GATLINBURG™
WEATHERED FIELDSTONE



Available Styles



1 1/4" Avg. Thickness
Face Size 8"x 8" to 14"x 14"
Sawed Back
Matching Corners

MOSAIC
Random Irregular
Shape



RANDOM ASHLAR
3" to 12" Rough
Squares & Recs



1 1/4" Avg. Thickness
3" to 12" Rise
6" to 18" Length
Sawed Back
Matching Corners



1 1/4" Avg. Thickness
2" to 6" Rise
4" to 12" Length
Matching Corners

MEDIUM STACK
2" to 6" Rough
Squares & Recs



NATURAL LEDGE
Natural Face
Ledgestone



1 1/4" Avg. Thickness
2" to 3" Rise
5" to 16" Length
Sawed Back
Matching Corners



1 1/4" Avg. Thickness
Random Length
Sawed Back
Sawed Top & Bottom
Untrimmed Ends
Matching Corners

UNIFORM LEDGE
Ledgestone With
2", 4" & 6" Rise



Packaging

Flats ship on stackable square pallet containing 100 square feet
(Odd quantities available by special order)

Corners ship in stackable wooden crate containing 25 or 50 linear feet
(Odd quantities available by special order)

Custom blends are available by special order



**Gatlinburg
Medium Stack**

Photo Courtesy of The Powell Group



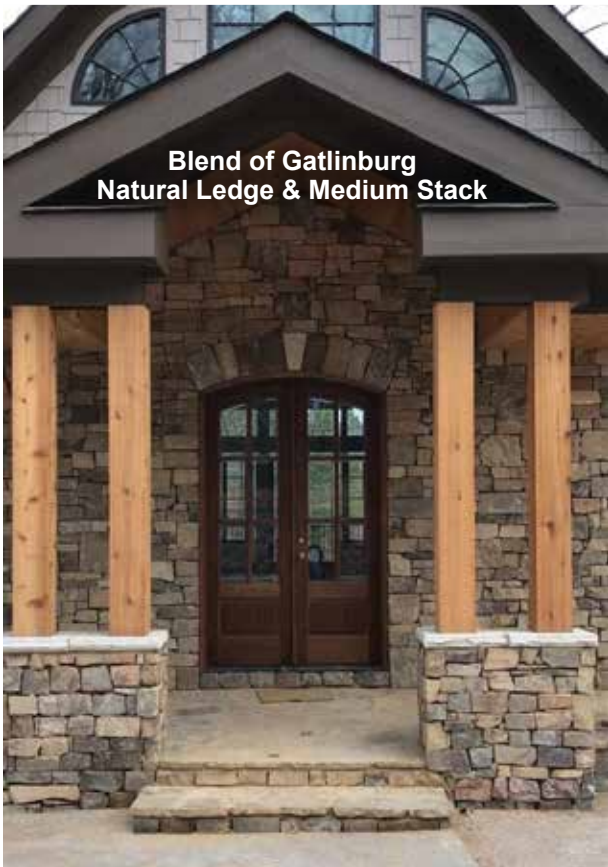
**Gatlinburg
Natural Ledge**

Photo Courtesy of Terry Hudson Stonework



**Blend of Gatlinburg
Mosaic & Random Ashlar**

Photo Courtesy of O1 Masonry



**Blend of Gatlinburg
Natural Ledge & Medium Stack**



**Gatlinburg
Uniform Ledge**

Highlands Collection



Blend of Pigeon Forge
Random Ashlar & Splitface Ledge

PIGEON FORGE™
VARIEGATED SANDSTONE



Available Styles



MOSAIC
Random Irregular
Shape



1 1/4" Avg. Thickness
Face Size 8"x 8" to 14"x 14"
Sawed Back
Matching Corners

RANDOM ASHLAR
3" to 12" Rough
Squares & Recs



1 1/4" Avg. Thickness
3" to 12" Rise
6" to 18" Length
Sawed Back
Matching Corners



SPLITFACE LEDGE
Rustic Splitface
Ledge Stone



1 1/4" Avg. Thickness
1" to 5" Rise
5" to 16" Length
Sawed Back
Matching Corners

UNIFORM LEDGE
Bedface Ledge Stone With
2", 4" & 6" Rise



1 1/4" Avg. Thickness
Random Length
Sawed Back
Sawed Top & Bottom
Untrimmed Ends
Matching Corners

Packaging

Flats ship on stackable square pallet containing 100 square feet (Odd quantities available by special order)
Corners ship in stackable wooden crate containing 25 or 50 linear feet (Odd quantities available by special order)

Custom blends are available by special order



**Pigeon Forge
Splitface Ledge**

Photo Courtesy of
Table Rock Quarries, Inc.



**Blend of Pigeon Forge
Random Ashlar &
Splitface Ledge**

Photo Courtesy of Fernando's Stone Works



Photo Courtesy of B&B Pools

**Pigeon Forge Splitface Ledge
with Mosaic Jumpers**

Highlands Collection

ARLINGTON™
RUSTIC GRANITE GNEISS



Packaging

Flats ship on stackable square pallet containing 100 square feet
(Odd quantities available by special order)
Corners ship in stackable wooden crate containing 25 or 50 linear feet
(Odd quantities available by special order)



Available Styles



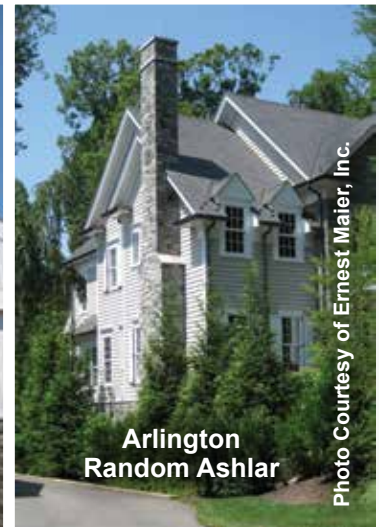
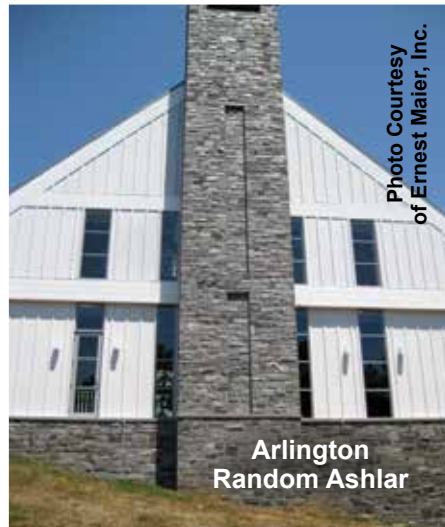
Mosaic

1 1/4" Average Bed Depth (Thickness)
Face Sizes Range From 8" x 8" to 14" x 14"
Natural Back (Two Usable Faces)
Matching Corners



Random Ashlar

1 1/4" Average Bed Depth (Thickness)
3" to 12" Rise (Height) | 6" to 18" Length
Natural Back (Two Usable Faces)
Matching Corners



Highlands Collection

TENNESSEE RIVER ROCK™ WEATHER-WORN RIVER ROCK



River Rock

Random Irregular Shape
1 1/4" Average Thickness
Face Size 8" x 8" to 14" x 14"
Matching Corners

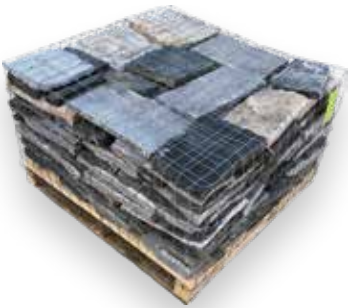


Tennessee
River Rock

Packaging

Flats ship on stackable square pallet containing 100 square feet (Odd quantities available by special order)
Corners ship in stackable wooden crate containing 25 or 50 linear feet (Odd quantities available by special order)

ARCHITECTURAL SERIES PACKAGING OPTIONS



100 Square Feet of Flats
12 Layers on 36" x 36" Skid
(Actual Footage = 108 Sq. Ft.)



150 Square Feet of Flats
18 Layers on 36" x 36" Skid
(Actual Footage = 162 Sq. Ft.)



25 Linear Feet of Corners
18" x 36" x 24" Crate



50 Linear Feet of Corners
36" x 36" x 24" Crate



Architectural Accessories

NATURAL WATER TABLE / SILLS

Nominal Dimensions (+/- 1/4")
2" thick x 3" wide x 12"+ long



Coyote Gray™
(hammered edge)



Coyote Gray™
(pitched edge)



Pigeon Forge™
(snapped edge)



Bluestone
(thermaled edge)

NATURAL WALL CAPS & COLUMN CAPS

Fabricated to customer specifications



Coyote Gray™
(hammered edge)



Coyote Gray™
(pitched edge)



Pigeon Forge™
(snapped edge)



Bluestone
(thermaled edge)

NATURAL HEARTHES, MANTELS & TREADS

Fabricated to customer specifications



Coyote Gray™
(hammered edge)



Coyote Gray™
(pitched edge)



Pigeon Forge™
(pitched edge)



Bluestone
(thermaled edge)

Irregular Flagstone

Available Colors
Arlington™
Coyote Gray™
Diamondback Ridge™†
Emerald Mountain™
Grand Cayman™
Lake James™
Mount Mitchell™
Pigeon Forge™
Queensbury™†
San Marcos™
Santa Monica™
Southern Eclipse™



Laydown Pallet



Standup Pallet

Available on 2,000 lb laydown or standup pallets

Laydown Pallet Specs

1" to 2" thick
 1 1/2 to 6 sq ft per piece
 Maximum 6 pcs per layer
 75-90 sq ft per ton

Standup Pallet Specs

1 1/2" to 2 1/2" thick
 3 to 9 sq ft per piece
 1,900-2,100 lbs per pallet
 70-85 sq ft per pallet



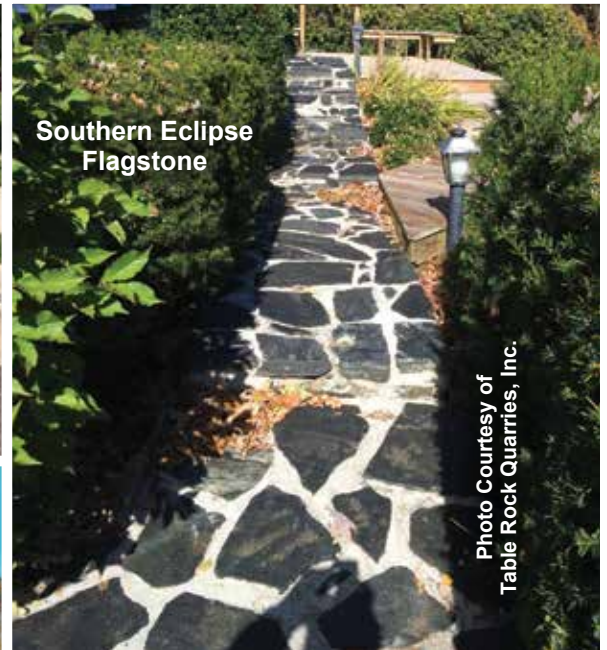
Photo Courtesy of Black Mtn. Builders & Fernando's Stone Works

San Marcos Flagstone



Coyote Gray Flagstone

Photo Courtesy of Capital Brick



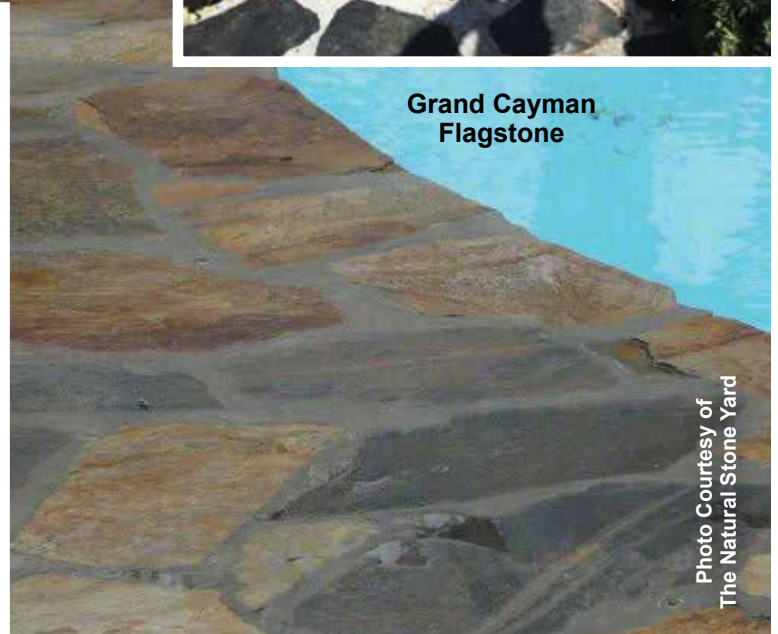
Southern Eclipse Flagstone

Photo Courtesy of Table Rock Quarries, Inc.



Pigeon Forge Flagstone

Photo Courtesy of Fernando's Stone Works



Grand Cayman Flagstone

Photo Courtesy of The Natural Stone Yard

Boulders



One-Man Boulders



Two-Man Boulders



Landscape Boulders



Gatlinburg Boulders

Photo Courtesy of Appalachian Stone, Inc.

Available Colors
Arlington™
Coyote Gray™
Diamondback Ridge™†
Emerald Mountain™
Gatlinburg™
Grand Cayman™
Lake James™
Mount Mitchell™
Queensbury™†
San Marcos™
Santa Monica™
Southern Eclipse™

Size Descriptions

- Garden Rounds : Roughly round and range in size from 4" to 8" (softball to soccer ball size)
- One-Man Boulders : Weigh under 100 pounds each. Generally small enough for one person to handle
- Two-Man Boulders : Weigh 100 to 200 pounds each. Generally small enough for two people to handle
- Landscape Boulders : Weigh more than 200 pounds each. Generally need to be handled by machinery

Packaging

- Garden rounds are packaged in cylindrical wire baskets
- One-man & two-man boulders are stacked on pallets and wrapped in wire
- Landscape boulders are stacked on pallets and banded



Various Boulders

Photo Courtesy of Pool By Design



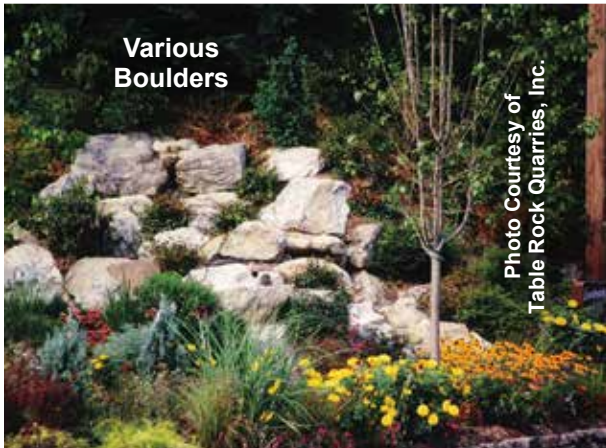
Gatlinburg Boulders

Photo Courtesy of Table Rock Quarries, Inc.



Southern Eclipse Boulders

Photo Courtesy of Table Rock Quarries, Inc.



Various Boulders

Photo Courtesy of Table Rock Quarries, Inc.

Other Products



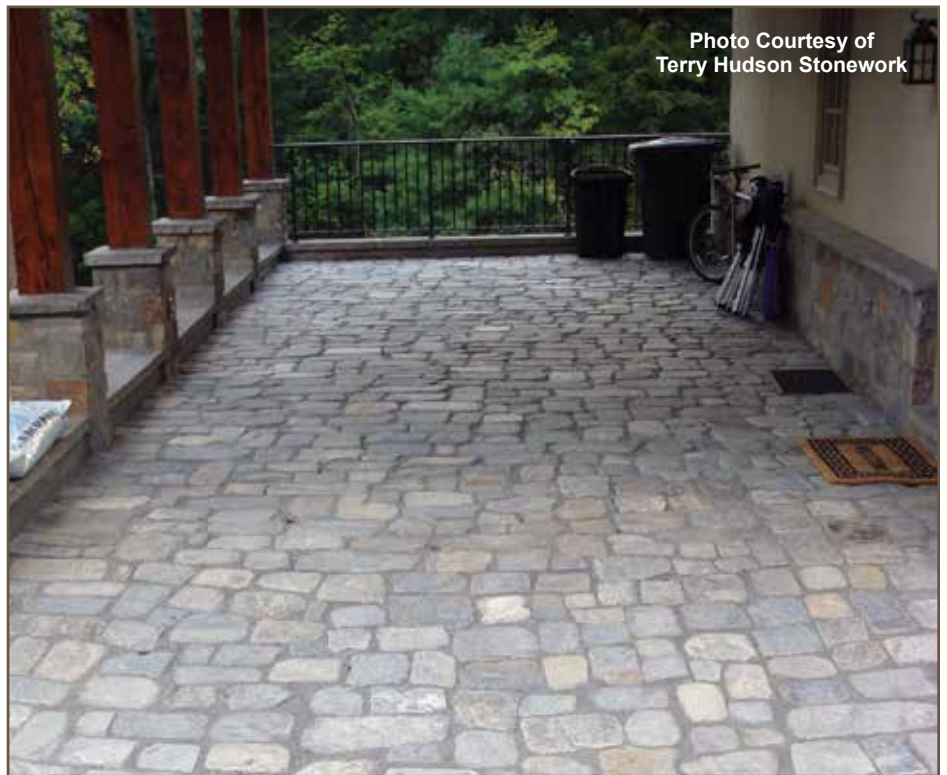
BUILDING STONE

HAND-SPLIT WALLSTONE
SNAPPED WALLSTONE
FIELDSTONE WALLSTONE
RIVER ROCK WALLSTONE
TUMBLED WALLSTONE



LANDSCAPE STONE

FLAGSTONE
STEPS & TREADS
TUMBLED COBBLES
FIELDSTONE
RIVER ROCK
OUTCROPPING STONE
WATERFALL ROCK
BOULDERS & AGGREGATES



Custom Fabrication

Custom Hearths, Mantels, Water Tables/Sills, Trim Pieces, etc.
Custom Fabrication is Priced to Order



Custom Hearths & Mantels



Custom Caps

Photo Courtesy of
The National Park Service



Custom Lintels

Photo Courtesy of
Boulder Look Stone



Custom Trim Pieces



Custom Facing



Custom Edging



Specialty



Custom Steps



Get
Real
Stone®

Coyote Gray
Random Ashlar

Photo Courtesy of
Bricks Landscape



www.GetRealStone.com

Available From Your Local Authorized Dealer

For a dealer near you
Call: (877)220-3139
Email: Info@GetRealStone.com

