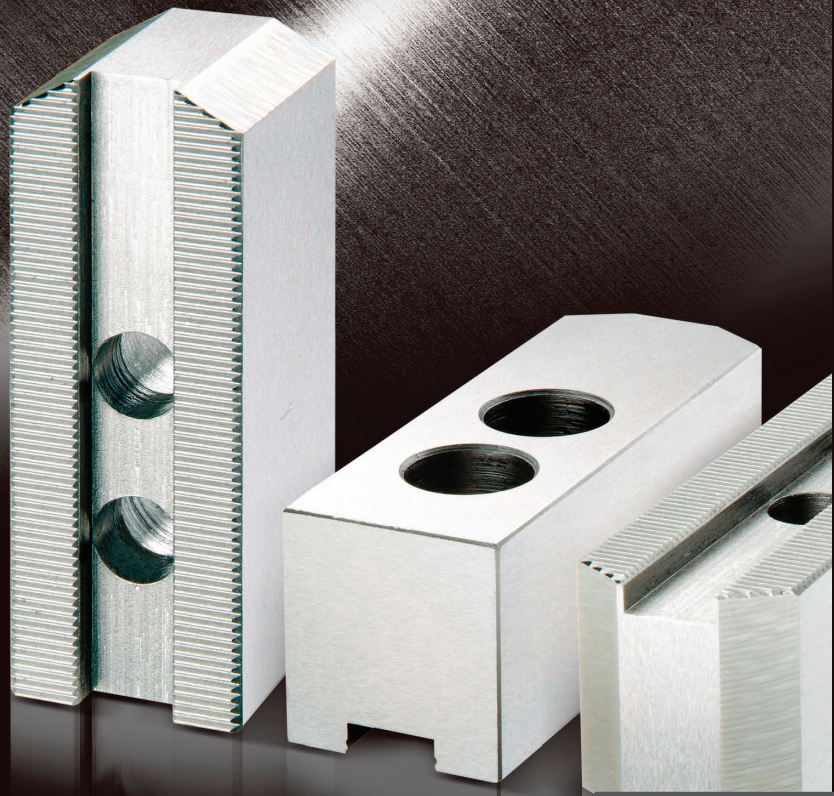


# BAKKER



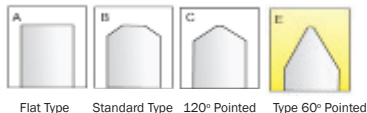
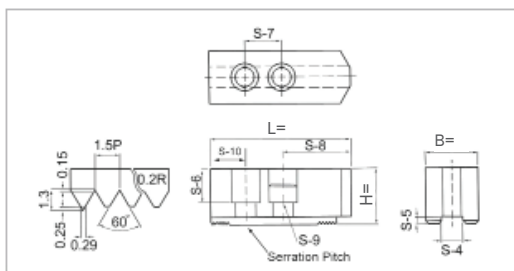
Alf I Larsen AS Metallbearbeiding - Transmisjoner - Verkstedinnredning - Maskiner - Verktøy

51 44 35 00

[www.ail.no](http://www.ail.no)

[post@ail.no](mailto:post@ail.no)

## MYKE BAKKER 1,5 MM X 60° STANDARD TYPE

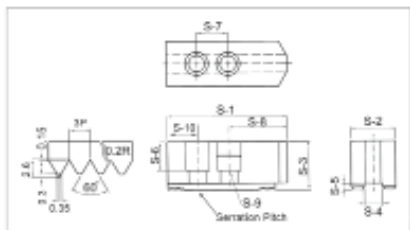


### Dimensjoner i mm

Chuck	Dimensjon Ordre nr.	Artikkel nr.	L=	B=	H=	S - 4	S - 5	S - 6	S - 7	S - 8	S - 9	S - 10	Vekt (kg)
B-204	SJ04023B	172292	51	23	23	10	4	13	14	27	M8	10	0.5
B-205	SJ05027B	169741	62	23	27	10	4	17	14	38	M8	10	0.7
B-206	SJ06030B	100887	73	31	30	12	5	18	20	38	M10	15	1.5
B-206	SJ06030E	195992	73	31	30	12	5	18	20	38	M10	10	1.5
B-208	SJ08037B	100892	95	35	37	14	5	22	25	46	M12	24	2.5
B-208	SJ08037E	186691	95	35	37	14	5	22	25	46	M12	16	2.5
B-210	SJ10042B	100889	110	40	42	16	5	27	30	50	M12	30	3.6
B-210	SJ10042E	175167	110	40	42	16	5	27	30	50	M12	20	3.6
B-212	SJ12048B-21	100893	129	48	48	21	5	28	30	60	M16	25	6.2
B-215	SJ15062A -25,5	173603	165	62	62	25,5	8(5)	37	43	85	M20	37	12.6
B-215	SI150622A-22	165566	165	62	62	22	8(5)	37	43	85	M20	37	12.6

- Materiale: stål (S45C)
- Passer til kitagawa, Samchully, Strong og andre kjente chucker.

## MYKE BAKKER 3.0 MM X 60° STANDARD TYPE



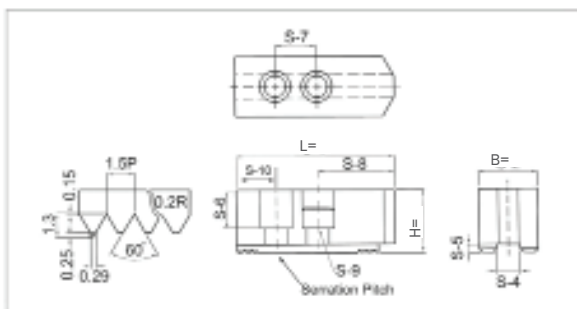
### Dimensjoner i mm

Dimensjon Ordre nr.	Artikkel nr.	L=	B=	H=	S - 4	S - 5	S - 6	S - 7	S - 8	S - 9	S - 10
SJA21070A	141318	180	63	70	25	9	45	60	80	M20	40

- Materiale: stål (S45C)
- Passer til kitagawa og andre kjente chucker.

## ALUMINIUM BAKKER

1,5 MM X 60°



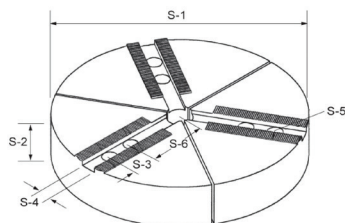
### Dimensjoner i mm

Chuck	Dimensjon Ordre nr.	Artikkel nr.	L=	B=	H=	S - 4	S - 5	S - 6	S - 7	S - 8	S - 9	S - 10
B-208	SJ - A08037B	167629	95	35	37	14	5	22	25	46	M12	24
B-210	SJ - A10042B	176415	110	40	42	16	5	27	30	50	M12	30
B-212	SJ - A12048B-21	184529	129	48	48	21	5	28	30	60	M16(M14)	39

- Materiale: aluminium (6061 T6)
- Passer til kitagawa og andre kjente chucker.

## RUNDE ALUMINIUMS BAKKER

1,5 MM X 60°



### Dimensjoner i mm

Chuck	Artikkel nr.	Beskrivelse	S-1	S-2	S-3	S-4	S-5 Bolt størrelse	S-6	S-7 Gjennom hullet
B-204	218085	FW-A04032	100	32	14	10	M8	26	25
B-205	218086	FW-A05032	135	32	14	10	M8	43.5	25
B-206	218087	FW-A06040	169	40	20	12	M10	49.5	25
B-208	202324	FW-A08050	200	50	25	14	M12	51	25
B-210	202325	FW-A10050	250	50	30	16	M12	65	25
B-212	211705	FW-A12050	300	50	30	21	M16	81	25

- Materiale: aluminium (6061 T6). Kan også leveres i stål (S45C).

**BAKKER HØYE BAKKER**

1,5 MM X 60°

**SJ05 / B-205**

Dimensjon / Ordre nr.	Artikkel nr.	Lengde=	Bredde=	Høyde=
SJ05048	169742	62	23	48

**SJ06/ B-206**

Dimensjon / Ordre nr.	Artikkel nr.	Lengde=	Bredde=	Høyde=
SJ06050	100888	73	31	50
SJ06070	180728	73	31	70

**SJ08/B-208**

Dimensjon / Ordre nr.	Artikkel nr.	Lengde=	Bredde=	Høyde=
SJ08050	176658	95	35	50
SJ08080	167074	95	35	80
SJ08100	184605	95	35	100

**SJ10/B-210**

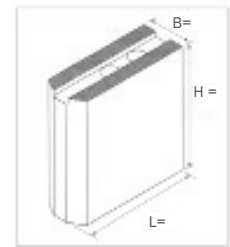
Dimensjon / Ordre nr.	Artikkel nr.	Lengde=	Bredde=	Høyde=
SJ10050	173027	110	40	50
SJ10060	178556	110	40	60
SJ10080	100890	110	40	80
SJ10080 B	100890	110	40	80
SJ10100	176659	110	40	100
SJ10120	173028	110	40	120
SJ10200	184611	110	40	200

**SJ12/B-212**

Dimensjon / Ordre nr.	Artikkel nr.	Lengde=	Bredde=	Høyde=
SJ120600E-21	183955	129	48	48
SJ12060 B	176654	129	48	60
SJ12060 E	176654	129	48	60
SJ12080 B	100894	129	48	80
SJ12080 C	203980	129	48	80
SJ12100 B	173294	129	48	100
SJ12120 B	179622	129	48	120
SJ12150 B	161945	129	48	150

**SJ15 / B-15**

Dimensjon / Ordre nr.	Artikkel nr.	Lengde=	Bredde=	Høyde=
SJ15080A-25,5	173770	165	62	80
SJ15100A-22	165567	165	62	100
SJ15130A-22	195558	165	62	130
SJ15150A-22	172250	165	62	150



Flat Type Standard Type 120° Pointed

- Vi lagerefører type B.

Materiale: Stål (S45C)

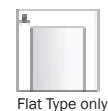
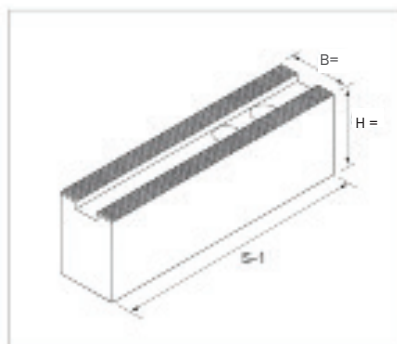
Serratering: 1.5 mm x 60°

Passer til kitagawa og andre kjente chuker.



## BAKKER EKSTRA LENGDE

### 1,5 MM X 60°



### Funksjon

- Lange bakker.
- For eksempel så kan man spenne 250 mm i en 8" chuck med 150 mm lange bakker.

### SJ08/B-208

Dimensjon / Ordre nr.	Artikkel nr.	Lengde=	Bredde=	Høyde=
SJ08063150A	191215	150	35	63

### SJ10/B-210

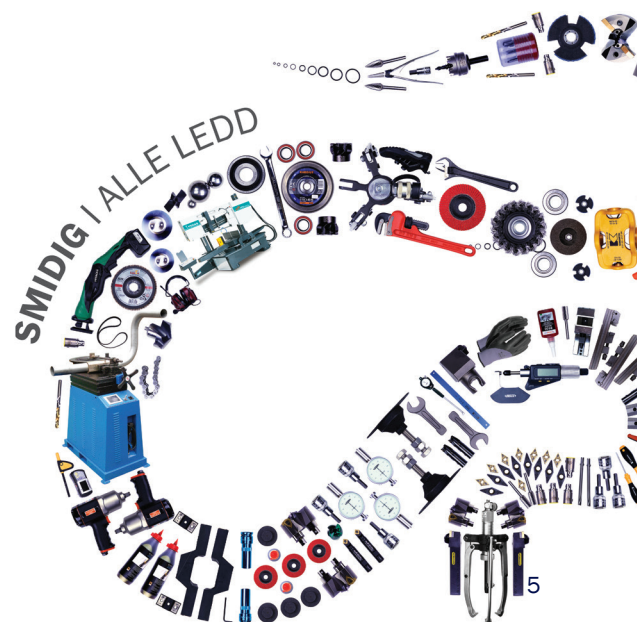
Dimensjon / Ordre nr.	Artikkel nr.	Lengde=	Bredde=	Høyde=
SJ10048150A	191115	150	40	48
SJ10048125E	204994	125	60	48

### SJ12/B-212

Dimensjon / Ordre nr.	Artikkel nr.	Lengde=	Bredde=	Høyde=
SJ12048150E	195637	150	48	48

### SJ15/B-215

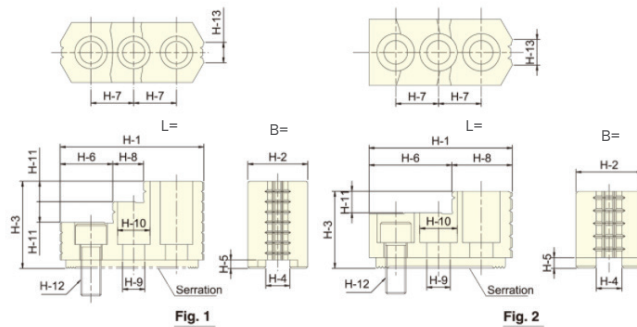
Dimensjon / Ordre nr.	Artikkel nr.	Lengde S - 1	Bredde S - 2	Høyde H =
SJ15072200A	178022	200	62	72
SJ15072250A	195557	250	62	72



## HARDE BAKKER

### Funksjon

- Harde bakker med serratering, som gir god oppspenning uten å lage dype merker i arbeidsstykket.



### Dimensjoner i mm

Chuck	Dimensjon Ordre nr.	Artikkel nr.	L=	B=	H=	H-4	H-5	H-6	H-7	H-8	H-9	H-10	Serration pitch	Vekt (kg)
B-206	HJ06	167191	67	31	36	12	5	39	20	28	12	M10	1.5x60°	0.95
B-208	HJ08	161920	86	35	51	14	5	31	25	18	12	M12	1.5x60°	1.95
B-210	HJ10	100886	100	40	54	16	5	43	30	17	14	M12	1.5x60°	2.85
B-212	HJ12 -21	161741	113	50	52	21	5	69.5	30	43.5	20	M16	1.5x60°	3.9
B-215	HJ15 -22	203181	143	62	86	22	8	55	43	38	20	M20	1.5x60°	9.6
B-215	HJ15 -25,5	191256	143	62	86	25.5	5	55	43	38	20	M20	1.5x60°	9.6
B-21	HJ21	194616	159	80	90	25	9	104	50	55	40	M20	3.0x60°	14.5

Materiale: SNCM21

Passer til Kitagawa eller andre kjente chucker.



FULLT OVERBLIKK OG **KLOKE** LØSNINGER

## AVSTANDBOLTER

Materiale: stål

### M-6 CH=10

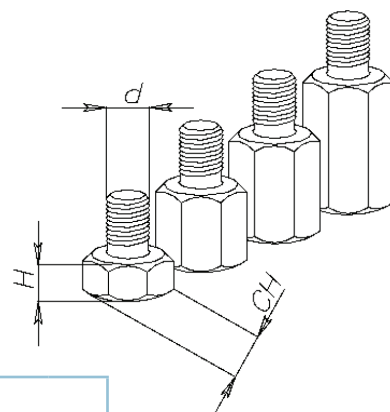
H	5	10	15	20	25
---	---	----	----	----	----

### M-8 CH=10

H	5	10	15	20	25	30	35	40	45	50	55	60
---	---	----	----	----	----	----	----	----	----	----	----	----

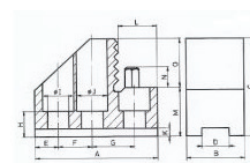
### M-10 CH=14

H	5	10	15	20	25	30	35	40	45	50	55	60	65	70	75	80	85	90
---	---	----	----	----	----	----	----	----	----	----	----	----	----	----	----	----	----	----



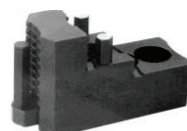
Nr.	Beskrivelse
208279	AVSTANDBOLT M- 6X5 FOR GRIP BAKKER
208278	AVSTANDBOLT M- 6X10 FOR GRIP BAKKER
183994	AVSTANDBOLT M- 6X15 FOR GRIP BAKKER
208281	AVSTANDBOLT M- 6X20 FOR GRIP BAKKER
208280	AVSTANDBOLT M- 6X25 FOR GRIP BAKKER
208255	AVSTANDBOLT M- 8X 5 FOR GRIP BAKKER
208256	AVSTANDBOLT M- 8X10 FOR GRIP BAKKER
204025	AVSTANDBOLT M- 8X15 FOR GRIP BAKKER
208257	AVSTANDBOLT M- 8X20 FOR GRIP BAKKER
208258	AVSTANDBOLT M- 8X25 FOR GRIP BAKKER
208259	AVSTANDBOLT M- 8X30 FOR GRIP BAKKER
208260	AVSTANDBOLT M- 8X35 FOR GRIP BAKKER
208261	AVSTANDBOLT M- 8X40 FOR GRIP BAKKER
204069	AVSTANDBOLT M- 8X45 FOR GRIP BAKKER
204068	AVSTANDBOLT M- 8X50 FOR GRIP BAKKER
208262	AVSTANDBOLT M- 8X55 FOR GRIP BAKKER
208263	AVSTANDBOLT M- 8X60 FOR GRIP BAKKER
208264	AVSTANDBOLT M-10X 5 FOR GRIP BAKKER
208265	AVSTANDBOLT M-10X10 FOR GRIP BAKKER
208266	AVSTANDBOLT M-10X15 FOR GRIP BAKKER
208267	AVSTANDBOLT M-10X20 FOR GRIP BAKKER
208268	AVSTANDBOLT M-10X25 FOR GRIP BAKKER
204651	AVSTANDBOLT M-10X30 FOR GRIP BAKKER
204650	AVSTANDBOLT M-10X35 FOR GRIP BAKKER
204649	AVSTANDBOLT M-10X40 FOR GRIP BAKKER
204026	AVSTANDBOLT M-10X45 FOR GRIP BAKKER
208269	AVSTANDBOLT M-10X50 FOR GRIP BAKKER
204027	AVSTANDBOLT M-10X55 FOR GRIP BAKKER
204031	AVSTANDBOLT M-10X60 FOR GRIP BAKKER
204028	AVSTANDBOLT M-10X65 FOR GRIP BAKKER
204029	AVSTANDBOLT M-10X70 FOR GRIP BAKKER
204030	AVSTANDBOLT M-10X75 FOR GRIP BAKKER
208270	AVSTANDBOLT M-10X80 FOR GRIP BAKKER
208271	AVSTANDBOLT M-10X85 FOR GRIP BAKKER
208272	AVSTANDBOLT M-10X90 FOR GRIP BAKKER

## GRIP BAKKER



### GDN

Chuck	Varenr.	Dimensjoner
B-208	186812	Ø 75 - 160
B-210	187248	Ø 95 - 195
B-212-21	179576	Ø 110 - 235

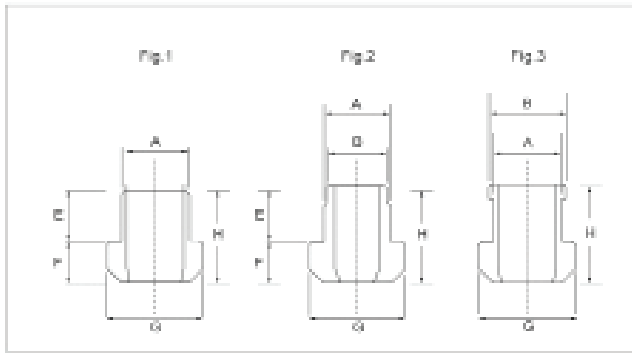


### GDL

### GDL

Chuck	Varenr.	Dimensjoner
B-208	186811	Ø 10 - 40+155 - 240
B-210	187249	Ø 18 - 110+190 - 290
B-212-21	196312	Ø 20 - 125+ 235 - 360
B-215	186856	Ø 25 - 155+ 295 - 450

## T- SPOR MUTTER



### Funksjon

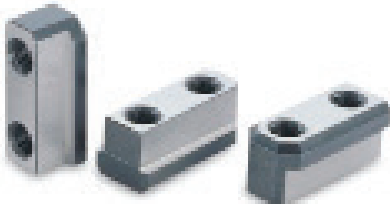
- Fastspenning av bakker i chuck.
1. Standard type (fig. 1)
  2. Spesial type (fig 2):
    - 6" bakker i en 8" chuck
    - 8" bakker i en 10" chuck
    - 10" bakker i en 12" chuck
    - 12" bakker i en 15" chuck

### Dimensjoner i mm

T- spor mutter for Kitagawa B-type

Type	Artikkel nr.	A	C	D	E	F	G	H	Passer til chuck
TB06	218090	12	20	M10	15	7	17.5	22	B-06
TB08	200443	14	25	M12	16	10	20.5	26	B-08
TB10	201263	16	30	M12	16	10	22.5	26	B-10
TB12	218089	18	30	M14	20	13.5	26.5	33.5	B-12
TB15	173837	25.5	43	M20	20	19	35	39	N-15

Figur 1



Figur 2



T- spor mutter for Kitagawa B- 200 type

Type	Artikkel nr.	A	B	C	D	E	F	G	H	Passer til chuck
T05	218088	10	--	14	M8	9.5	5	14	14.5	B205
T06	180692	12	--	20	M10	11	7.5	17.5	18.5	B-206
T08	170109	14	--	25	M12	12	8.5	20.5	B-208	B-208
T10	172503	16	--	30	M12	13	8.5	22.5	21.5	B-210
T12	166319	21	--	30	M16	16.5	11.5	28	28	B-212
T15	185074	24	22	43	M20	29	16.5	33.5	45.5	B-15
T21	174129	25	--	60	M20	26	19	37.5	45	B-21

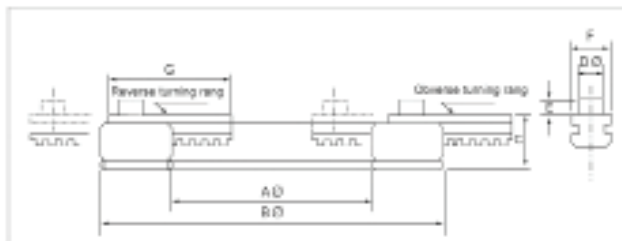


## SPENNRING FOR BAKKER (TL-TYPE)

**3-JAWS**


### Funksjon

Forspenning av chuck for presisjonsdreining av myke bakker.



### Dimensjoner i mm

Dimensjon Ordre nr.	Artikkel nr.	A Ø	B Ø	C	C Ø-E	F-G	Maks grip (Kgf)	Maks rpm	Vekt (kg)	Chuck dia.
TL-125	179219	125	200	26	16.3-8	19-61	1,500	700	3.5	6", 8", 10"
TL-160	178303	160	248	31	18.3-8	24-80	1,750	600	5.6	8", 10", 12"

Materiale: SCM440

### Bruk:



1. Still bakken i korrekt posisjon.

2. Sett spenn ringen slik at den passer til bolt hullet, og drei i motsatt retning av chuckens spenn retning.

3. Spenn chuck for å forspenne spennringen.



4. Drei til ønsket størrelse.

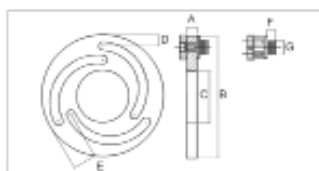
5. Åpne chuck og ta ut spennringen.

6. Klar til dreining.

## SPENNRING FOR BAKKER (JB-TYPE)

### Funksjon

Presisjons dreining av myke bakker.



### Dimensjoner i mm

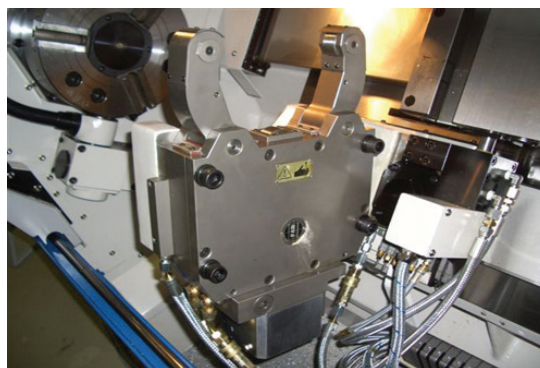
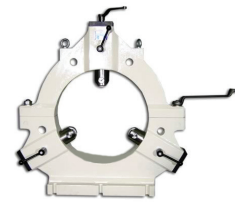
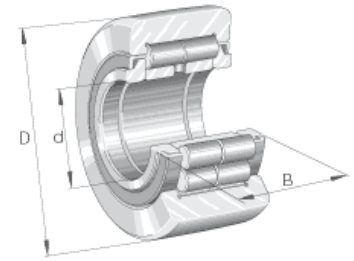
Dimensjon Ordre nr.	Arikkel nr.	A	B	C	D	E	F	G	Vekt (kg)
JB 10	204248	12	258	150	17	40	9	18,5	2,9
JB 12	178304	15	316	188	21	50	9	24.5	5.3
JB 15	178305	20	380	230	23	52	16	31	10.1

Materiale: SCM440

## BRILLELAGER

Fullrullige sylindriske rullelager med aksial styring og labyrint tetninger på begge sider.

Artikkel nr.	Beskrivelse	D mm	d mm	B mm	Max rpm
118549	NUTR 15-A	35	15	19	6500
118551	NUTR 17-A	40	17	21	5500
173877	NUTR 1747-A	47	17	21	5500
118552	NUTR 20-A	47	20	25	4200
118553	NUTR 2052	52	30	25	4200
118554	NUTR 25-A	52	25	25	4200
118555	NUTR 2562	62	25	25	4200
118557	NUTR 30-A	62	30	29	2600
118558	NUTR 3072	72	30	29	2600
118560	NUTR 35-A	72	35	29	2100
118561	NUTR 3580	80	35	29	2100
118562	NUTR 40-A	80	40	32	1600
118563	NUTR 4090	90	40	32	1600
118564	NUTR 45-A	85	45	32	1400
118565	NUTR 45100	100	45	32	1400
118567	NUTR 50-A	90	50	32	1300
118566	NUTR 50110	110	50	32	1300





## LCH 250, CHUCK FETT/ EKSTREMFETT

Artikkel nr.: 121235 ( 1 kg) - BOKS

Artikkel nr.: 161765 ( 400 g) - PATRON

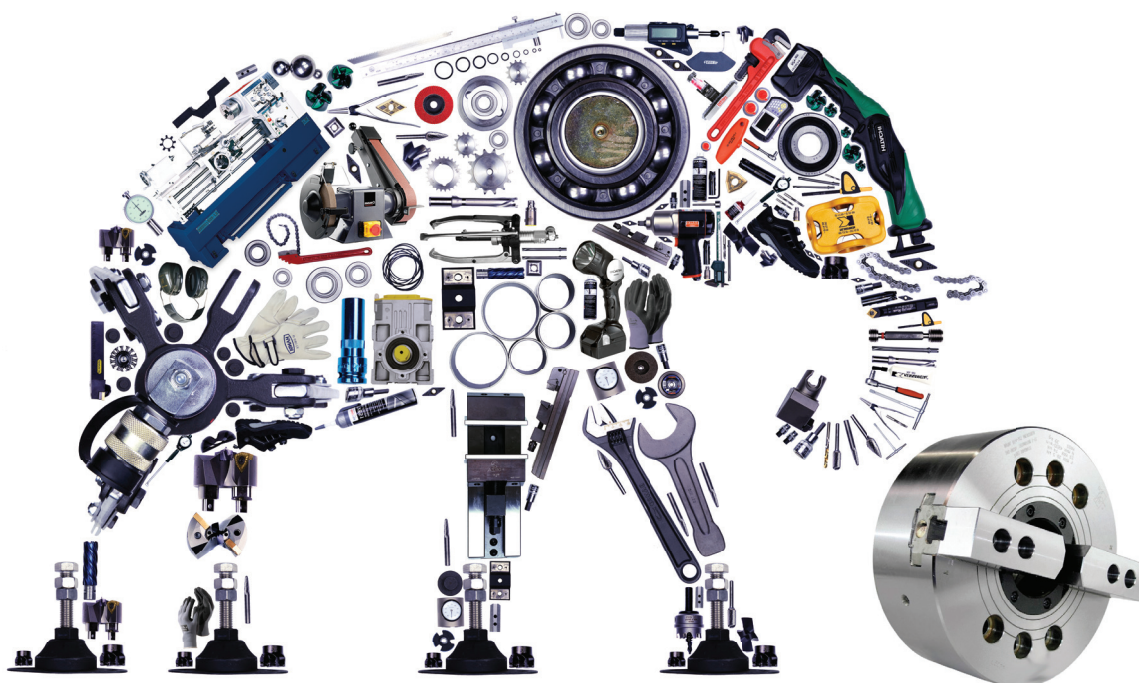
**Brukerområde:** En mer spesialisert utgave at Multi TP. Har ekstrem motstandskraft mot utvask både i kaldt og varmt vann. Motstår selv høytrykkspyling og kjemiske produkter. Kan brukes på alle lager, gear og mekaniske deler utsatt for belastninger. Perfekt for samlebånd i fuktige og aggressive miljøer. LCH 250 har også veldig gode anti-korrosive egenskaper.

**Produkt informasjon:** Spesialisert fett for høyt trykk og temperaturvariasjoner. Kompleks litiumfortykket mineralolje NGLI 2 (fås også i grad 00, 1 og 3.) Farge: Grønn.  
Brukstemperatur -20 til + 1800 °C, dryppunkt 2500 °C.  
Forpakning: 400 g, 1 kg, 5 kg, 50 kg og 180 kg.



## FETTPRESSE

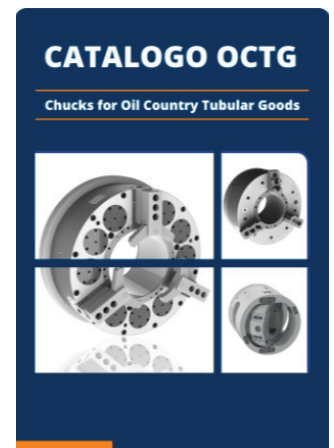
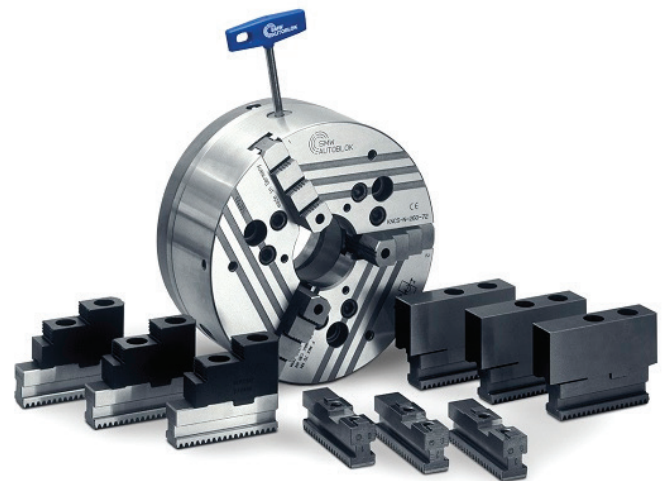
Artikkel nr.: 105091





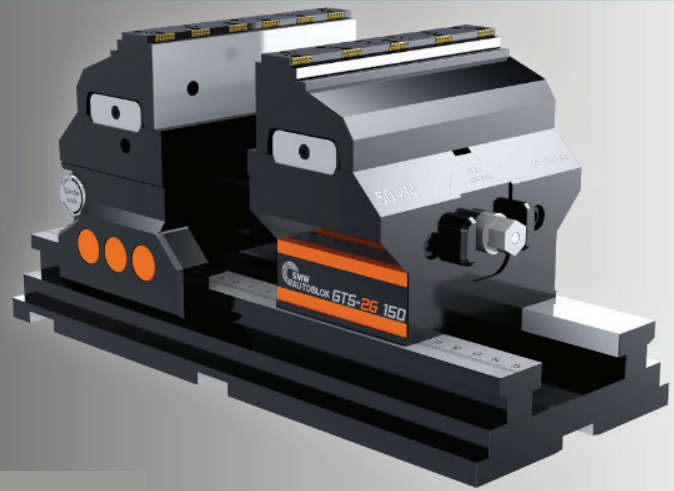
# SMW AUTOBLOK

Er en av våre leverandører på bakker.





# GT5-2G



APS Zero Point Clamping Systems



ZeroAct



WPS Workpiece Positioning System



WPS Mini



SinterGrip Clamping Inserts



5-Axis Machining Tool



GT5-2G



GTO Stationary Chucks



Power Vices



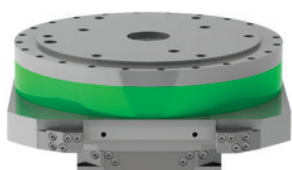
Multiple Clamping System



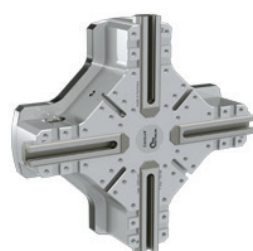
Tombstones



Precision Machine Vices



Multi Drive Power Flange



Centco 4 MLW

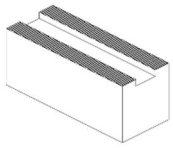


Manual Chucks



Centco 4

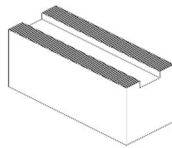
• SOFT TOP JAWS



**MAB-M**

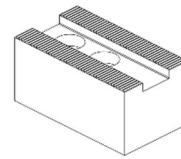
WITHOUT HOLES or WITH HOLES\*

- Metric serration 1.5 x 60°
- Grinded serration
- Material: 16MnCr5



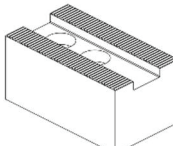
**MAB-ML**  
WITHOUT HOLES - LONG VERSION

- Metric serration 1.5 x 60°
- Grinded serration
- Material: 16MnCr5



**WBJ-M/  
WBSA-M**

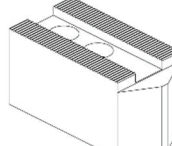
- 16MnCr5/C45**
- Metric serration 1.5 x 60° or 3 x 60°
  - Grinded serration
  - Material: 16MnCr5/ C45



**WBJ-MA**

LIGHT VERSION ALUMINIUM F50

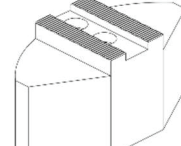
- Metric serration 1.5 x 60°
- Material: Aluminium



**AWB-M**

LONG, POINTED VERSION

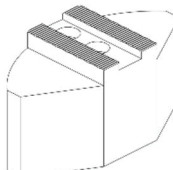
- Metric serration 1.5 x 60° or 3 x 60°
- Grinded serration
- Material: 16MnCr5



**SBJ-M**

SOFT PIE JAWS

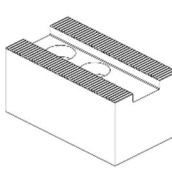
- Metric serration 1.5 x 60°
- Grinded serration
- Material: 16MnCr5



**SBJ-MA**

SOFT PIE JAWS ALUMINIUM

- Metric serration 1.5 x 60°
- Material: 16MnCr5



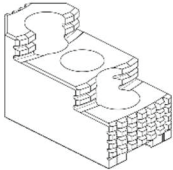
**WBSA-M**

C45

- Metric serration 1.5 x 60°
- Material: 16MnCr5

\*Bolt pattern to customer request

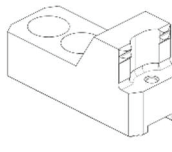
• HARD TOP JAWS



**MHB-M**

REVERSIBLE

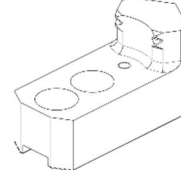
- Metric serration 1.5 x 60° or 3 x 60°
- Grinded serration



**SGA-M**

HARD ROUGHING JAWS FOR EXTERNAL CLAMPING

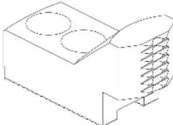
- Metric serration 1.5 x 60°
- Grinded serration



**SGI-M**

HARD ROUGHING JAWS FOR INTERNAL CLAMPING

- Metric serration 1.5 x 60°
- Grinded serration



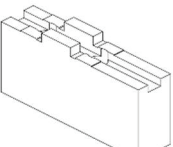
**GSG-M**

HARD ROUGHING JAWS FOR BAR WORK

- Metric serration 1.5 x 60°
- Grinded serration

**TONGUE & GROOVE**

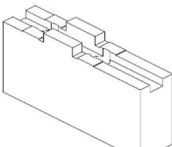
• SOFT TOP JAWS



**WAK**

STANDARD VERSION

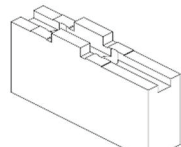
- Tongue & groove
- For quick jaw change
- Material: 16MnCr



**WAKS**

WIDE VERSION

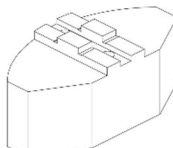
- Tongue & groove
- For quick jaw change
- Material: 16MnCr



**WAK-A**

LIGHT VERSION ALUMINIUM F50

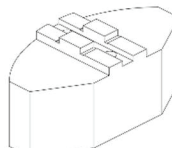
- Tongue & groove
- For quick jaw change
- Material: Aluminium (tensile strength = 500 N/mm<sup>2</sup>)



**SBK**

SOFT PIE JAWS

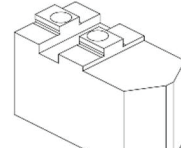
- Tongue & groove
- For quick jaw change
- Material: 16MnCr



**SBK-A**

SOFT PIE JAWS ALUMINIUM F50

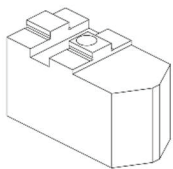
- Tongue & groove
- For quick jaw change
- Material: Aluminium (tensile strength = 500 N/mm<sup>2</sup>)



**WBR**

16MnCr5

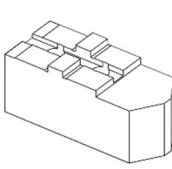
- Tongue & groove
- For 2- and 3-jaw power chuck
- Material: 16MnCr



**WBK**

16MnCr5/C45

- Tongue & groove
- For 2- and 3-jaw power chuck
- Material: 16MnCr/C45



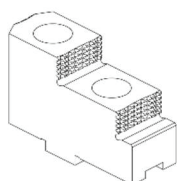
**WAKA**

C45 AMERICAN STANDARD

- Tongue & groove
- For 2-, 3- and 4-jaw power chuck
- For all chucks: American Standard
- C45

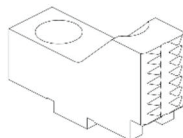
## TONGUE & GROOVE

### • HARD TOP JAWS



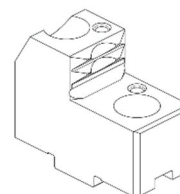
#### GUA

- REVERSIBLE**
- Tongue & groove
  - For quick jaw change
  - For internal and external clamping



#### GSK

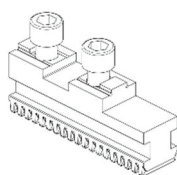
- HARD BAR ROUGHING JAWS**
- Tongue & groove
  - For quick jaw change
  - For external clamping



#### GKG

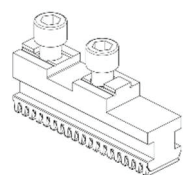
- REVERSIBLE**
- Tongue & groove
  - For quick jaw change
  - For internal and external clamping

## JAWS FOR QUICK JAW CHANGE SYSTEM SMW



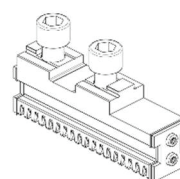
#### GBK

- HARD BASE JAWS**
- Modular serration straight
  - For quick jaw change
  - Incl. jaw mounting bolts ISO 4762 – 12.9



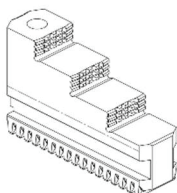
#### GBKS

- HARD BASE JAWS WITH 1/2 TOOTH PITCH OFFSET**
- Modular serration straight system SMW
  - For quick jaw change
  - Incl. jaw mounting bolts ISO 4762 – 12.9



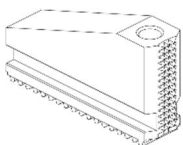
#### GBK-2G

- HARD BASE JAWS WITH SEALING**
- Modular serration straight system SMW
  - For quick jaw change
  - Incl. jaw mounting bolts ISO 4762 – 12.9



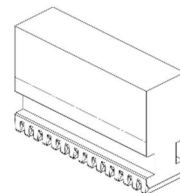
#### GST

- HARD STEPPED MONOBLOCK JAWS**
- Modular serration straight
  - For quick jaw change



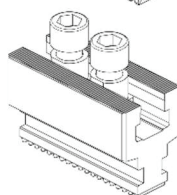
#### GES

- HARD MONOBLOCK ROUGHING JAWS**
- Modular serration straight
  - For quick jaw change



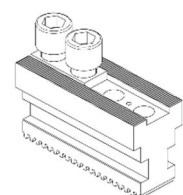
#### UVB

- SOFT MONOBLOCK JAWS QUENCHED 15CRNi6**
- Modular serration straight
  - For quick jaw change



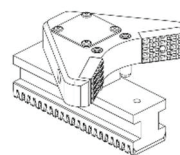
#### KOB

- KOMBI BASE JAWS**
- Modular serration straight
  - For quick jaw change
  - Incl. T-nuts and screw ISO 4762 – 12.9



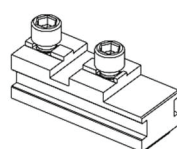
#### KLG-D/KLG-M

- KOMBI BASE JAWS**
- Modular serration straight
  - For INCH / METRIC SERRATION
  - For quick jaw change



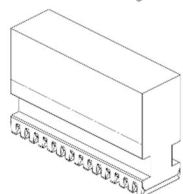
#### PJC

- PENDULUM JAWS COMPLETE FOR 6-POINT CLAMPING**
- Modular serration straight
  - For quick jaw change
  - Modular system
  - Sealed against contamination



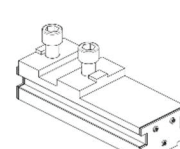
#### GBK-B

- HARD BASE JAWS WIDE VERSION FOR SMW-AUTOBLOK KNCS-NB(X), HG-NB**
- Modular serration straight
  - For quick jaw change



#### UVB-B

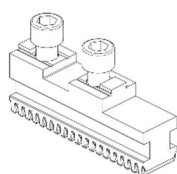
- SOFT MONOBLOCK JAWS WIDE VERSION FOR SMW-AUTOBLOK KNCS-NB(X), HG-NB**
- Modular serration straight
  - For quick jaw change



#### GBK-B-2G

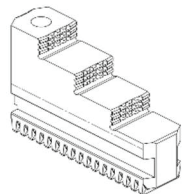
- HARD BASE JAWS WIDE VERSION FOR SMW-AUTOBLOK HG-B-2G**
- Modular serration straight
  - For quick jaw change

## JAWS FOR QUICK JAW CHANGE SYSTEM FORKARDT



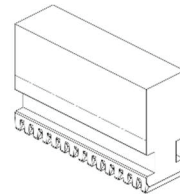
#### MFG

- HARD BASE JAWS**
- Modular serration inclined
  - For quick jaw change
  - Incl. jaw mounting bolts ISO 4762 – 12.9



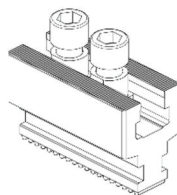
#### FST

- HARD STEPPED MONOBLOCK JAWS**
- Modular serration inclined
  - For quick jaw



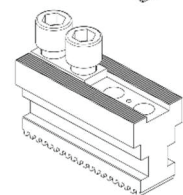
#### BFR

- SOFT MONOBLOCK JAWS QUENCHED 15CRNi6**
- Modular serration inclined
  - For quick jaw change



#### KFR

- KOMBI BASE JAWS**
- Modular serration inclined
  - For quick jaw change
  - Incl. T-nuts and screw ISO 4762 – 12.9



#### KLS

- KOMBI BASE JAWS**
- Modular serration inclined
  - For INCH SERRATION
  - For quick jaw





# BAKKER



Versjon: 2



ALF I LARSEN AS

**Alf I Larsen AS**

Metallbearbeiding - Transmisjoner - Verkstedinnredning - Maskiner - Verktøy

51 44 35 00

[www.ail.no](http://www.ail.no)

[post@ail.no](mailto:post@ail.no)