

# Comby

Precision combined  
with freedom



DOT PEEN TECHNOLOGY



STATION & PORTABLE USE



CONTROLLED BY TABLET



CONNECT<sup>®</sup>.series

**TECHNO**mark<sup>®</sup>  
— smart traceability

MAKE THE CHOICE OF FREEDOM

# Comby model



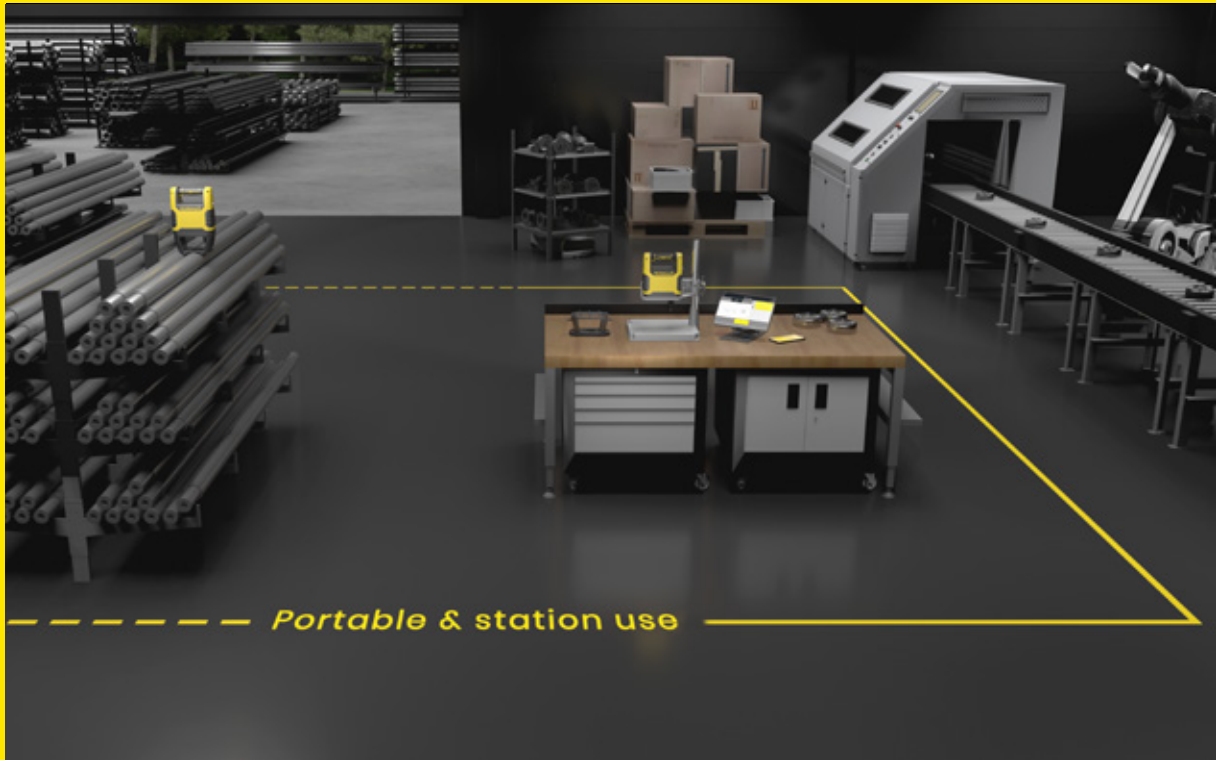
COMBO MACHINE



CONTROLLED BY TABLET



WIRELESS COMMUNICATION



We have rethought the way we design and develop our products. Today, our marking solutions are the result of direct customer feedback across a wide range of applications.



## Station & portable use

1.

The machine is **located on a workbench** or **the operator moves** with the machine

2.

**Marking zones** can be **multiple** (indoor and outdoor use)

3.

Marking on **parts of all sizes**



## Electromagnetic dot peen technology

- **Indent the material** through a succession of impacts that form a permanent mark
- **On all types of part** up to a hardness of 63HRC

# BENCHTOP MODE

## Precision with simplicity



MARKING OF SMALL TO MEDIUM-SIZED PARTS UP TO 295 MM HIGH

### All-in-one column base

- Easy, precise positioning thanks to the adjustment wheel
- Ergonomic base for mounting multiple clamping systems on universal T slots
- Compact: easy installation on a workbench

### Robustness and stability

- Cast aluminium base and steel column
- Marking head with protective bumpers and technical plastic shell
- Weight of column base: 11 kg

### Marking window

120 x 60 mm

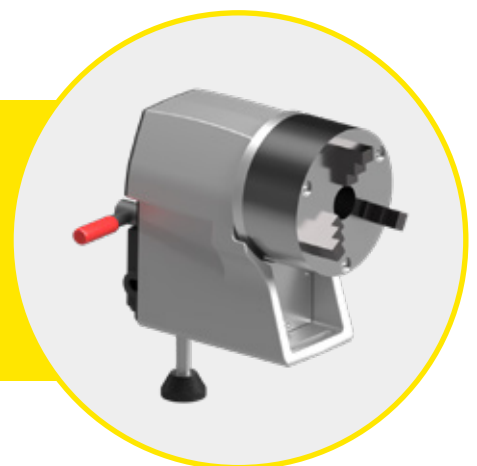


### Intelligent Driving Impact (IDI)

Unique function automatically adjusts distance between part and stylus during marking enabling marking over uneven surfaces from 3-8 mm in height.

### Connect.series D-axis

- Marking on the circumference and indexing around cylindrical parts
- Compatible with 120D marking head
- Exclusively available on tablet for optimal setting comfort





# DRIVING SOFTWARE

## On-board performance



**Controlled by tablet\***  
with an application developed  
by Technomark

- Landscape mode display
- Creation and modification of marking files
- Import of marking files and logos from a PC
- Visualization of the marking area on the screen
- 2 levels of use:
  - **administrator mode** to create marking files
  - **production mode** for opening & filling pre-configured files
- Maintenance module
- Error display

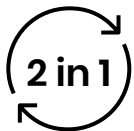
\*Connect.App application also available on smartphone. Tablet not included.



Intuitive and  
easy to use



Portable  
control unit



**2 in 1 machine**  
Switch from a portable to a  
benchtop mode in less than 10s



Lightweight marking  
head: 3.2 kg



360° use of the  
machine



Illuminated  
marking area



### Licence pack

- **« Datamatrix » licence**  
Generation and marking of 2D codes
- **Logo licence**  
Insertion and marking of logos
- **«Font creator» licence**  
Creation of custom fonts
- **Scan licence**  
2D code scanning (using the tablet's camera)

### APPLICATION



Compatible with Android 10+

CONNECT.series®

Patented machines



## Wireless communication

between the marking head and the tablet

within 10 m



SECURE WIFI PROTOCOL



FREEDOM OF MOVEMENT



INDOOR AND OUTDOOR MARKING



PAIRING OF HEADS THROUGH  
THEIR SERIAL NUMBERS



## PORTABLE MODE

# Traceability in motion



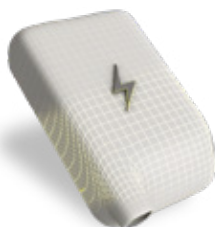
MARKING MEDIUM TO LARGE PARTS  
HEAVY OR DIFFICULT TO ACCESS



## Energy self-sufficient

22V lithium ion battery integrated in head

- Sufficient battery life for one day of marking
- Specific battery design for better electronics, autonomy and software combination
- Lightweight, performance and durability guaranteed



## Support foot 5 in 1

1. Non-slip-foot
2. Magnetic support with magnets
3. Marking on flat parts
4. Marking on small and large cylinders with two pairs of locating V's
5. Positioning support with support guide



## Storage dock

- Head support with workbench mounting option
- Stylus, springs and support guide storage
- Maintenance: checking the condition of the spring and the sharpening angle of the stylus



OUR ADDED VALUE

# Long-term support

## Pre-sale



FEASIBILITY  
STUDY



SAMPLES  
MARKING



ON-SITE  
TESTING



CUSTOMIZATION

## After sales



HELPLINE



TRAINING



SERVICE AND  
MAINTENANCE CONTRACT



REPAIR



LOAN OF EQUIPMENT

**TECHNO***mark*<sup>®</sup>  
——— smart traceability



1, allée du développement  
42350 La Talaudière - France  
+33 (0)4 77 22 25 91  
[info@technomark-marking.com](mailto:info@technomark-marking.com)

[www.technomark-marking.com](http://www.technomark-marking.com)



**47** countries

WORLDWIDE PRESENCE THROUGH OUR  
DISTRIBUTORS AND 3 SUBSIDIARIES

**99%**

AVERAGE CUSTOMER SATISFACTION  
RATE OVER 3 YEARS

**22 500**

YELLOW MACHINES IN SERVICE  
WORLDWIDE, ALL TECHNOLOGIES

**10%**

OF TURNOVER DEDICATED TO R&D

