

Tempo

Performance dedicated
to integration



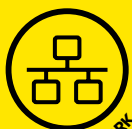
DOT PEEN TECHNOLOGY



INTEGRATED USE



16-CHANNEL CARD



FIELD NETWORK



INLINE.series[®]

CHOOSE PRODUCTIVITY

Tempo model



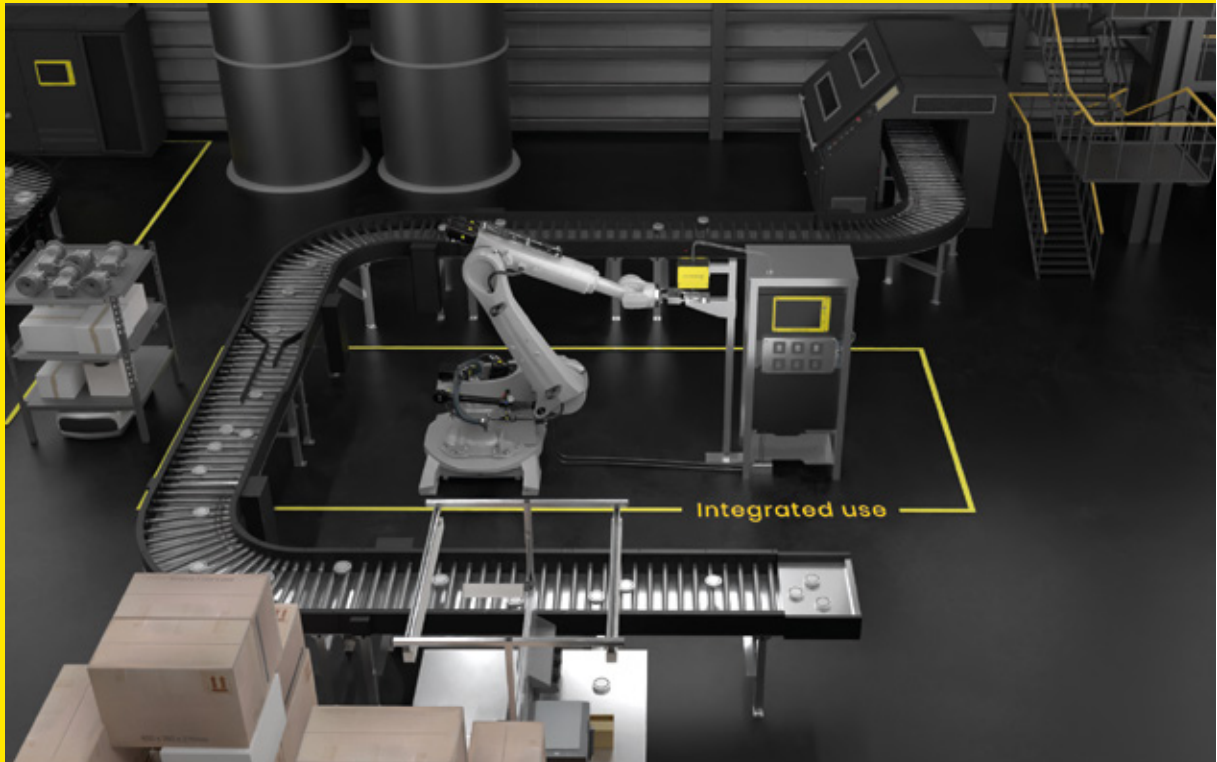
EASY TO INTEGRATE



NETWORK CONNECTION



16-CHANNEL CARD



We have rethought the way we design and develop our products. Today, our marking solutions are the result of direct customer feedback across a wide range of applications.



Integrated use

1.

The machine is mounted on a line, a production unit or a robot arm

2.

Markings are produced in large series

3.

Marking on parts of any size



Electromagnetic dot peen technology

- Indent the material through a succession of impacts that form a permanent mark
- On all types of part up to a hardness of 63HRC

INTEGRATION SOLUTION

Designed for all industrial environments



Easy to integrate on a production line

- Multi-position marking head (360°) thanks to its 3 mounting faces, with the ability to mount on a robot arm
- Controller with front mounting (rack and panel mount) and back mounting (VESA 100)
- Single energy source: electricity



Plug-in cables

- Simplified handling
- Cable length from head to controller: 10 m
- 24VDC 10A power supply

Marking window

Tempo 30
30*60 mm



Productivity

- Up to 3 characters per second
- Developed for continuous operation 24/7

Robustness

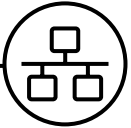


- Integrated protective bellows with Velcro fastening system
- Material: aluminium frame

*198 mm with impact unit and standard stylus

CONNECTIVITY

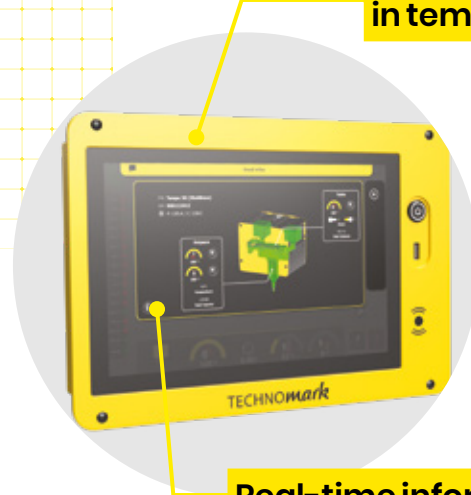
A wide range of possibilities



Network connection up to 3 Ethernet ports

- Slave mode control
- Field network compatibility:
 - **PROFINET** or **EtherNet/IP**
 - Integrated switch function
- Ethernet TCP-IP compatibility:
 - Data exchange with an internal network and saving files on a shared folder

10" touch screen
in tempered glass



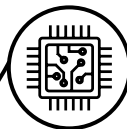
Real-time information

- Machine state
- Maintenance information

3 USB ports

Connection for keyboard, mouse, USB key (file & logo transfer) and code reader (variable filling; barcode, Datamatrix & QR code reading)

24VDC 1A power supply



16-channel card fully configurable and programmable

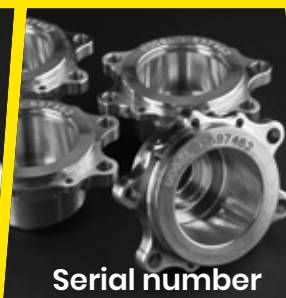
- 14 types of output: maintenance, copy input status, control output in marking cycle, etc.
- 12 types of input: start marking, wait external input, increment serial number, etc.

- + Simplified set-up
- + Reduced overall investment

Many types of marking possible



Alphanumeric*



Serial number



Timestamp



2D Datamatrix



Logo

*Straight, radial, angular & circumferential alphanumeric: text, serial number, variable, timestamp (incremental numbers, shift patterns, time, date, week, etc.).



INTUITIVE DRIVING

Software that meets all your needs

Intelligent software

developed by Technomark

- **Control of the course of the impact unit:** marking window size restriction, add path points, choice of origin taps, etc.
- **4 user profiles:** administrator, supervisor, production & auto. Possibility to create individual accounts with access by password and badge.
- **Management of local variables (files) and global variables (machine).**
- **Input, output and origin indicators.**
- **History of activities:** connection, marking, test, error, mode of use, etc.
- **Easy Shift function:** stylus simultaneous moves as the text is re-positioned on screen.



Intuitive and
easy to use



Advanced
settings

Available licences

- **« USB Production Tracker » license**
Exporting marked data
- **« Mark & Read » license**
2D codes validation after marking
- **RFID – Log on control box license**
Badge access
- **« Marking authorization control » license**
Checking duplicate variables
- **« Network access » license**
Local network connection
- **Other licenses**
« Datamatrix », « LogPro », « Logo marking », « CSV Manager », « Font creator ».

INLWE.series

OUR ADDED VALUE

Long-term support

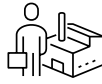
Pre-sale



FEASIBILITY
STUDY



SAMPLES
MARKING



ON-SITE
TESTING



CUSTOMIZATION

After sales



HELPLINE



TRAINING



SERVICE AND
MAINTENANCE CONTRACT



REPAIR



LOAN OF EQUIPMENT

TECHNO*mark*[®]
——— smart traceability



1, allée du développement
42350 La Talaudière - France
+33 (0)4 77 22 25 91
info@technomark-marking.com

www.technomark-marking.com



47 countries

WORLDWIDE PRESENCE THROUGH OUR
DISTRIBUTORS AND 3 SUBSIDIARIES

99%

AVERAGE CUSTOMER SATISFACTION
RATE OVER 3 YEARS

23 000

YELLOW MACHINES IN SERVICE
WORLDWIDE, ALL TECHNOLOGIES

10%

OF TURNOVER DEDICATED TO R&D

