

# Surface Treatment and Rust Prevention Products

## How to apply LOCTITE® 7505

### 1. Preparation

---

Wire brush to remove flaky rust and loose scale. It is recommended to use LOCTITE® 7063 to remove oil, grease and dirt. Shake well before use.

### 2. Application

---

Brush or sponge on liberally. Apply two coats (recoat time: 60 to 120 minutes). Uneven colour indicates need for additional coats. Allow minimum 24 hours to dry before painting.

**Hint:**

Do not apply in direct sunlight or on wet surfaces.



## How to apply LOCTITE® 7800

### 1. Preparation

---

Remove rust, old coats of paint etc. from surface. Sandblast surface if possible. It is recommended to use LOCTITE® 7063 to finally remove oil, grease and dust. Shake well before use.

### 2. Application

---

- Spray on clean parts from 20 to 30 cm to give a uniform film
- The coating becomes dry to touch after 30 to 60 minutes. Allow 24 hours to dry completely



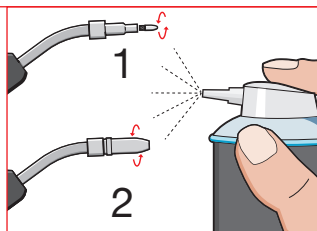
## How to apply LOCTITE® SF 7900 Ceramic Shield

### 1. Preparation

Clean contact tip and shroud from adhering spatter. For best results, use a new contact tip and shroud. Shake well before use.

### 2. Application

- Place the contact tip on the welding torch and apply from a distance of 10 – 15 cm. Fit the shroud to the welding torch and coat the exterior and interior. Let the coating dry for several seconds
- After the application reverse the can and spray for several seconds to prevent clogging of the nozzle



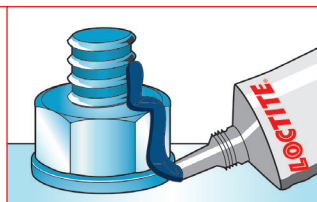
## How to apply LOCTITE® 7414

### 1. Preparation

It is recommended to use LOCTITE® 7063 to degrease, clean and dry surfaces.

### 2. Application

Squeeze the tub to extrude the paste and form a narrow bead across the parts. Let product dry for 60 seconds.



For detailed information please refer to the Technical Datasheet or contact your Henkel Technical Service Team.