



MID-RISE/MULTI-FLOORS 小高层/多层

SURMOUNT
STYLE + COPY
突破风格与复制
MID-RISE 小高层
MULTI-FLOORS 多层

SURMOUNT
STYLE + COPY 突破风格与复制

杨锋 主编



上海同济·建筑设计

ISBN 978-7-214-07871-1

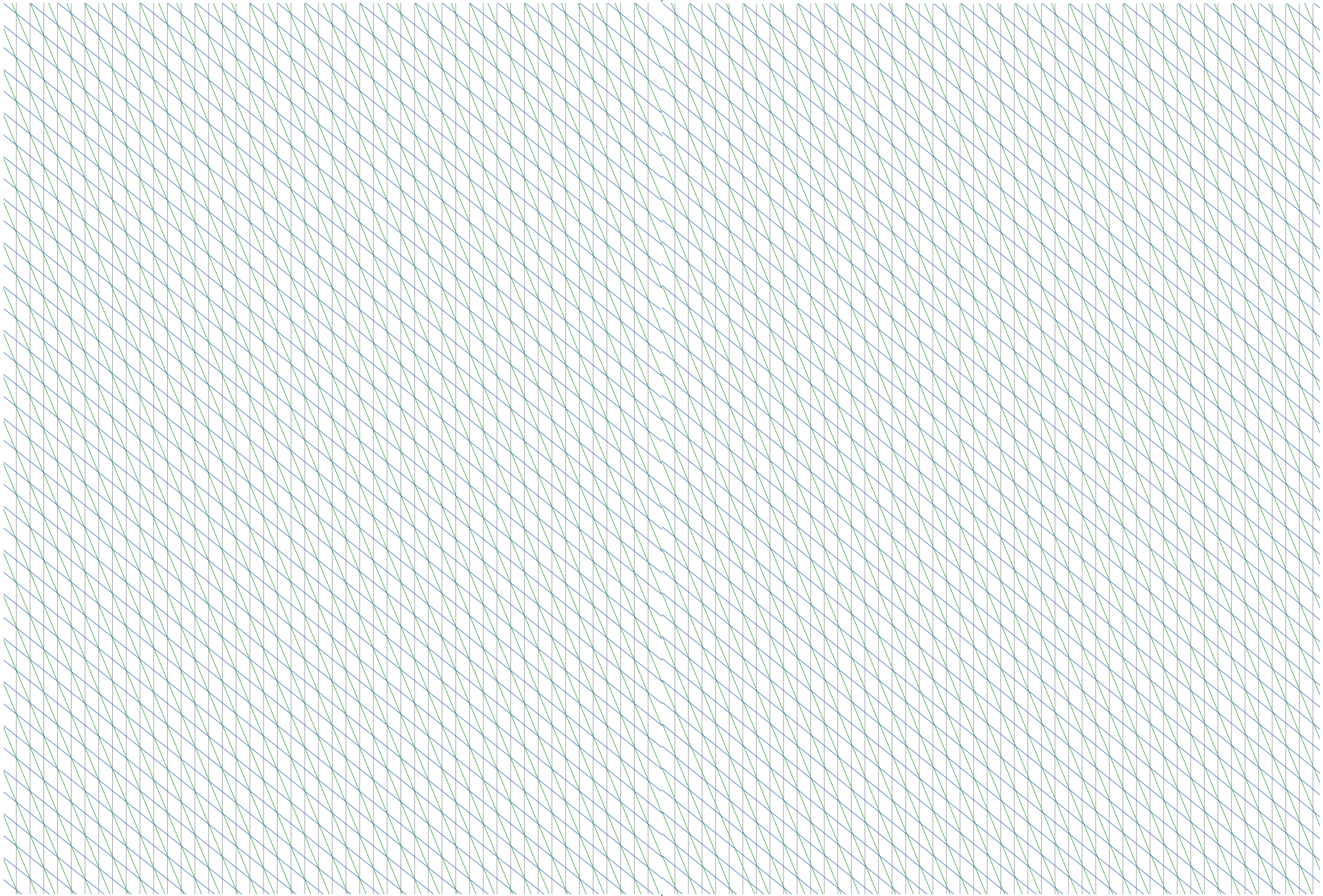


定价: 208.00元 (USD36.00)

总定价: 596.00元 (USD102.50)

(上、下册)

香港建筑出版社
Hong Kong Architecture Science Press



PREFACE

序言

REVELATIONAL RESIDENTIAL DESIGNS

Demographic patterns and social structures influence today's travel, living and buying experiences. Living life to the maximum means that the dynamic of changes and trends impacting our daily lives shows the world in a state of constant transition.

Society enjoys a seamless blend of both sensory aesthetics and functionality in all residential arenas. Innovative residential design stems from conscious efforts to create a sustainable living environment of unrivalled quality. Designers strive to ensure that delicate balance is fused with current and future needs of the appropriate target audience.

For each individual project, dwp believes that architects should make a thorough assessment of the client needs, the targeted potential buyers and dwellers, along with all relevant environmental, cultural, emotional and spiritual aspirations and practical concerns, to be factored into the equation.

The process of innovative residential is begin from conceptualizes, plans to tailors into residential designs, to best suit the individual requirements and lifestyles of their clients, neither compromising on aesthetics nor functionality, in order to achieve optimum results, stellar designs and residential designs that exceed client expectations.

Using extensive knowledge and industry know-how, designers should have to entirely dedicate to creating iconic residential design solutions from masterplanning, architecture, landscape, through to stunning interiors, with a client-oriented focus, making ideas and dreams into reality.

Reflecting the diverse lifestyles, cultures and cities, dwp has conceived and implemented inspirational, award-winning projects. EverRich II and maysan are two of excellent innovative residential project by dwp, which explains perfectly about dwp's understanding of innovative residence. Maysan Towers' design theme draws influence from the unique natural topography of Al Ain, often referred to as the Garden City of the Gulf, integrating into nature harmoniously. While the materials and finishes in EverRich II are in warm tone, which put more focus into a feeling of home to create a cozy, intimate feeling, with a touch of luxury and elegance.

This is a precious innovation in architecture; it may not be the best but it reflects dwp's creative willingness.



Brenton Mauriello
dwp Group CEO

创新住宅设计的启示之声

人口模式和社会结构影响着人们的旅行、生活和购物体验。生命在最大程度上意味着各种变化和趋势的不定性，影响着我们的日常生活，显示出世界正处于一个不断转变的状态之中。

在所有的住宅领域里，美学和功能的完美融合都深受人们的赞赏。创新的住宅设计源于有意识的努力，这种努力旨在创造一个最高质量的可持续生活环境。设计师们力求在满足目标群体的当前需求及未来需求之间保持微妙的平衡。

在 dwp 的设计理念里，建筑师们理应对每个项目都先做好全面深入的评估，包括客户的需求、潜在的目标买家和住户，然后把这些因素与相关的环境、文化、情感 and 精神的诉求，以及实际可行性综合起来进行全方位的考虑。

设计创新住宅的过程开始于一系列概念化的过程，也就是为住宅设计量身定做规划图纸的过程，以更好地满足客户的个性化需求和生活方式。当然，为了最终做出超越客户期待的一流住宅设计，达到最佳设计效果，这一过程不会向美学或功能的任何一方妥协。

从总体规划、建筑风格、景观配置到极富魅力的内饰装潢，设计师应该使用广泛的知识和专业技能，全心全意地专注于创造具标志性的住宅设计方案，以客户导向为重点，让概念和梦想成为现实。

我们也设计和实现了许多鼓舞人心的获奖项目，这些项目反映出不同的生活、文化和城市风貌。其中越南胡志明市 EverRich II 公寓和阿联酋阿布扎比市米桑大厦就是我们两个杰出的创新住宅项目，完美诠释了我们对创新住宅的理解。米桑大厦的设计主题源于有“海湾花园城市”之称的阿莱茵市独特的自然地形，与自然和谐地融合在一起。而 EverRich II 公寓的材料和装饰则把更多的重点放到居家的感觉上，采用了暖色调来创造一种舒适、亲密的感觉，并透出淡淡的奢华与优雅。

在建筑设计上，这是难能可贵的创新，它不一定是最好的，但它反映出我们的创新精神。

布伦顿·毛列洛
dwp 集团 CEO

PREFACE

序言

What's the latest residential design in western developed countries and which direction they are moving forward when many residential designers are busy copying indiscriminately Italian, French, British and American styles?

China is one of the world's largest housing market, however, the majority of residential designs still remain on copying styles, which such indiscriminately pursuit worldwide styles and reproduce mechanically large amount of living spaces. It is a major problem for Chinese contemporary residential design. Indeed, designers have realized that it will never be a scientific development with such so-called popular styles originated from blind pursuit and self-respect of customers. Actually, personal identity and status are not only recognized through the Beijing Tuscany Style. With the growing confidence and more internationalized perspective, residential designers shall break the replication of copying styles and be more rational about "man and nature" so as to be people-oriented and fulfill environmental demands and to ensure that the residences in China will be in a healthier development. Moreover, the growing imperatives for sustainability, shortage of land, ever-changing modern technology and architectural materials enable designers to create a more comfortable living environment needed in the modern society.

To fix the crux of residences in China and provide a new thinking style for designers to break the replication of copying styles, we collect 84 world's typical residential designs such as high-end residences in international metropolitans like New York, London, Paris, Tokyo, etc., along with mid-range, economic residences in developed countries to fully demonstrate the latest trend in the world. These projects are unique architecture with harmony between form and function, not only focusing on daylighting, views, ventilation, public and exterior spaces of residences, but manifesting the modern residential design trend is towards green, ecology, intensivism, science and technology, reflecting diversity, multity and organism of architectural concept elements. The book summarizes and analyzes each project to bring a fresh thinking about the most advanced residential designs (totally 84) in the world for residential designers lingering in the replication of copying styles, helping them break it out, fully realize people-oriented and harmoniously integrate man into nature.

HongKong Architecture Science Press
Editorial Board

当国内住宅设计师盲目抄袭意、法、英、美式风格时，这些西方发达国家的最新住宅又是什么样的呢？他们的设计在朝哪个方向发展？

中国有世界上最大的住宅市场，但住宅设计多数仍停留在对风格的抄袭上。盲目追求世界风格，机械地大规模复制生活空间，是当下中国住宅发展面临的一个重要问题。设计师们知道风格的盛行很大一部分源自消费者的盲目媚外和自我尊重需求，实际上身份与地位的认同并非一定要用北京的托斯卡纳风格来实现。伴随着国人自信的回归和越来越国际化的视野，国内住宅设计建筑师只有跳出风格与复制的怪圈，才能更理性地思考“环境与人”的问题，中国住宅建筑才能更健康地发展。而日益增强的可持续发展要求、居住用地的紧张，还有现代科技和建筑材料的日新月异等因素，使得现在的设计师有能力也有需要营造更舒适的人居环境。

针对中国住宅的这一症结，为了给设计师走出风格与复制的怪圈提供新的思路，本书收集了 84 个世界优秀集合住宅设计典范——既有发达国家的国际大都市如纽约、伦敦、巴黎、东京的高端住宅，也有它们的中档和经济住宅，全面展示了世界住宅的最新动态。它们都是形式与功能和谐统一的个性化建筑，除了住宅建筑需要侧重考虑的日照采光、视线、通风、公共与户外空间等因素外，它们还反映出当今住宅设计的趋势和方向是绿色、生态、集约、科技，突显着建筑理念的多元化、多重性和有机性。本书对每个项目的特点进行了总结归纳和评论分析，为国内徘徊在风格与复制中的建筑师们带来 84 种世界最先进住宅设计的全新思维，帮助设计师突破风格与复制，真正做到“以人为本，天人合一”。

香港建筑科学出版社
编委会



CONTENTS

目 录

012-021

Parc Marianne
Residential Building,
Montpellier, France

法国蒙彼利埃市玛丽亚娜公园住宅楼

022-027

Lyon Confluence,
France

法国里昂汇流街区

036-043

Living Foz Apartment
Building, Porto,
Portugal

葡萄牙波尔图市福兹生活公寓楼

050-057

Eliza Apartments,
Sydney, Australia

澳大利亚悉尼市伊丽莎公寓

066-075

Intefeel, Osaka, Japan

日本大阪 Intefeel 公寓

028-035

Metropolis Apartments
Copenhagen, Denmark

哥本哈根城市公寓楼

044-049

Social Housing 100,
Paris, France

法国巴黎 100 社会住房

058-065

Apartmenthouse Joh 3,
Berlin, Germany

德国柏林 Joh 3 新公寓

076-085

Boulogne D2, Paris,
France

法国巴黎 Boulogne D2 公寓楼

092-097

Lyon Dynacité, Lyon,
France

法国里昂市 Lyon Dynacité 社会
福利公寓房

106-113

Student Housing Duwo
Delft, The Netherlands

荷兰代夫特市 Duwo 学生公寓

124-129

Iceberg in the Aarhus
Docklands, Denmark

丹麦奥尔胡斯港区冰山住宅综合楼

086-091

Residential Building
Plokite Split, Croatia

克罗地亚斯普利特市 Plokite 公寓楼

098-105

Social Housing in
Angers, France

法国昂热市社会住房

114-123

Stella Zwei Residential
Building, Vienna

维也纳斯特拉·扎维公寓楼

130-137

The Wave in Vejle,
Denmark

丹麦瓦埃勒市的波浪住宅楼



CONTENTS

目 录

138-143

**Calista Luxury Resort,
Antalya-Belek, Turkey**

土耳其安塔利亚市卡利斯塔豪华度假村

144-149

**Hedorfs Residence Hall,
Frederiksberg, Denmark**

丹麦菲特烈堡 Hedorfs 学生公寓

150-155

**One & Ortakoy, Istanbul,
Turkey**

土耳其伊斯坦布尔市 One &
Ortakoy 住宅综合楼

156-161

**4 Towers Osdorp,
Amsterdam, The Netherlands**

荷兰阿姆斯特丹市奥斯德普 4 Towers

162-167

**Residential Building C,
Nova Gorica, Slovenia**

斯洛文尼亚新戈里察市公寓楼 C

168-173

**Filadelfia Corporate Suites,
Mexico City, Mexico**

墨西哥墨西哥城菲拉德尔菲亚商务酒店

174-181

**Blok 1 Presikhaaf,
Arnhem, The Netherlands**

荷兰阿纳姆市学生公寓楼 1 号楼

182-189

**The Silhouette,
Aarhus, Denmark**

丹麦奥尔胡斯港西罗町公寓楼

190-197

**Social Housing for Mine-
workers, Asturias, Spain**

西班牙阿斯图里亚斯省矿工的社会福利房

204-207

**Sonnenhof, Jena,
Germany**

德国耶拿市赛纳霍夫办公住宅楼

198-203

**Kajkanten,
Copenhagen, Denmark**

丹麦哥本哈根 Kajkanten 综合公寓楼

208-213

**Strandkanten-K9
Housing, Norway**

挪威 Strandkanten 住宅区 K9 公寓楼

214-221

**Blok K, Amsterdam,
The Netherlands**

荷兰阿姆斯特丹市 Blok K 住宅楼

222-227

**Citadel,
The Netherlands**

荷兰 Citadel 城堡漂浮公寓



Living Foz Apartment Building, Porto, Portugal

Location: Porto, Portugal
Architect: d'EMM arquitectura & Paulo
Fernandes Silva
Gross Floor Area: 13,700 m²
Number of Floors: 7
Photographer: Pedro Lobo

葡萄牙波尔图市 福兹生活公寓楼

地点：葡萄牙波尔图
设计公司：d'EMM 建筑事务所和保罗·费尔南
德斯·席尔瓦建筑事务所
建筑面积：13 700 m²
层数：7
摄影师：佩德罗·洛博



Surmount 突破点

BALCONY 阳台

FACADE 立面

MATERIAL 材料

ENERGY SAVING 节能

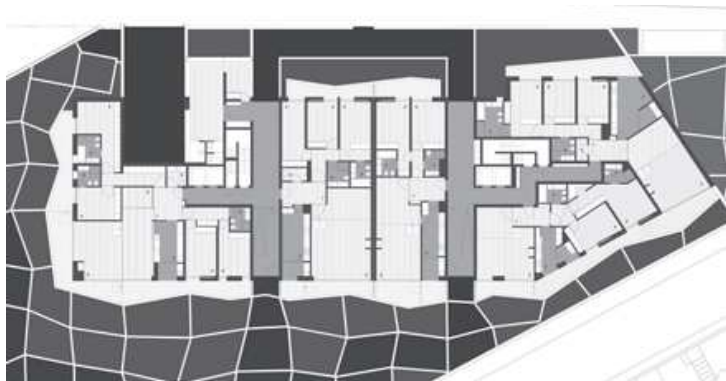
Living Foz is located in Foz do Douro, an Oporto city parish with ancestral occupation due to its south sun exposure and proximity to both the sea shore and the Douro River mouth. Nowadays, it struggles to consolidate and qualify its residential offer. Therefore, Living Foz was expected to present a new approach to high quality residential buildings, emphasizing the relationship between interior and exterior, taking advantage of the sea shore views and the Portuguese sunny climate.

Accomplishing these expectations, the balcony angle articulation creates outdoor spaces that are enriched by contrasts of light and shade, exposure and protection.

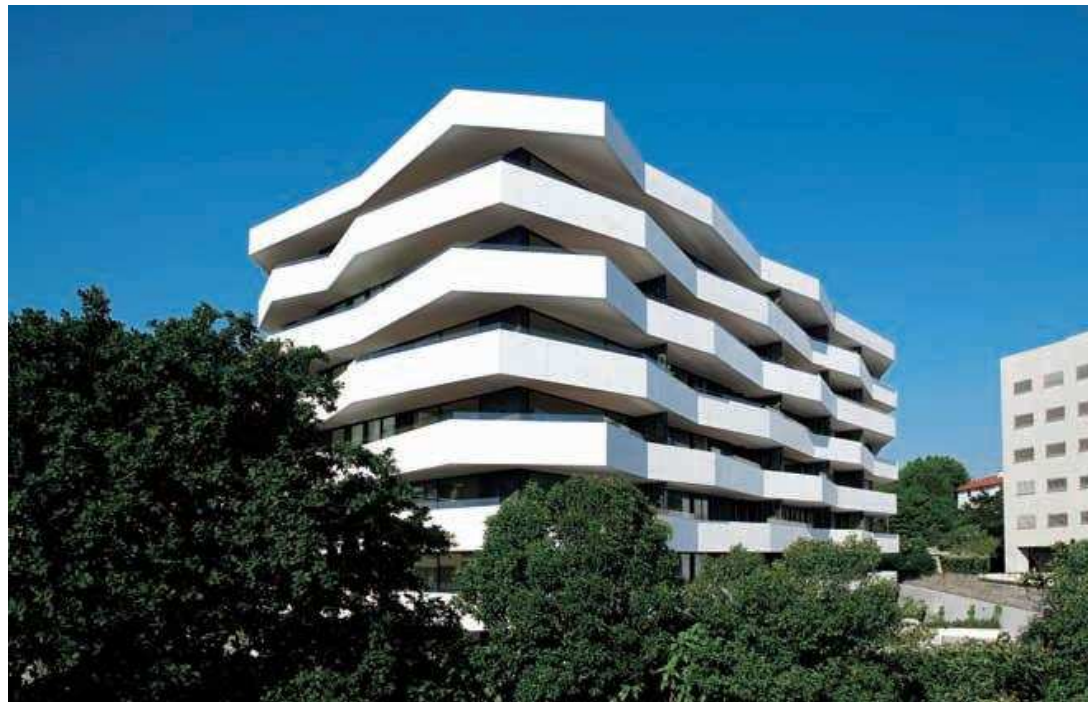




Floor Plan 楼层平面图



Ground Floor Plan 首层平面图



The interior compartments, articulated in order to encourage a flexible use of the social areas, are widely opened to the exterior by large floor to ceiling sliding windows. Nevertheless, these glass surfaces are always protected from direct sun exposure, representing a simple though effective way to reduce energy consumption.

Unleashing 30% of the plot area for a collective use garden, a relief to the neighboring construction is obtained, qualifying the surrounding residential area. The geometric and material principle of the building continues through the external areas, defining the direction and shape of the garden paths.

The 40 apartments (divided in typologies of 2 to 5 bedroom) are distributed over 7 floors and completed with private parking in 3 underground floors. The pavement is lined in dark varnished wood, and the walls and carpentry are painted in a very light white tone. Kitchens and toilets are coated with Portuguese natural stone.

Living Foz is also about sustainability, regarding the use of high technology insulation in windows, walls and coverures as well as the conception of the building design itself. In fact, the controlled sun exposure, the thermal inertia of the façade, the use of alternative energy and electrically efficient appliances, are features that integrate the building in a quality standard of respect for the individual and their habitat.

福兹生活公寓楼坐落在波尔图市教区的福兹 - 杜多罗市, 其南部阳光充足, 邻近海边和多罗河口, 当地人世代生活在这里。如今, 这座城市的住宅条件需要得到巩固和优化。因此, 福兹生活公寓楼将会加强室内和室外的联系, 充分利用海景优势和葡萄牙阳光充足的气候, 以新的方式诠释高品质公寓楼。

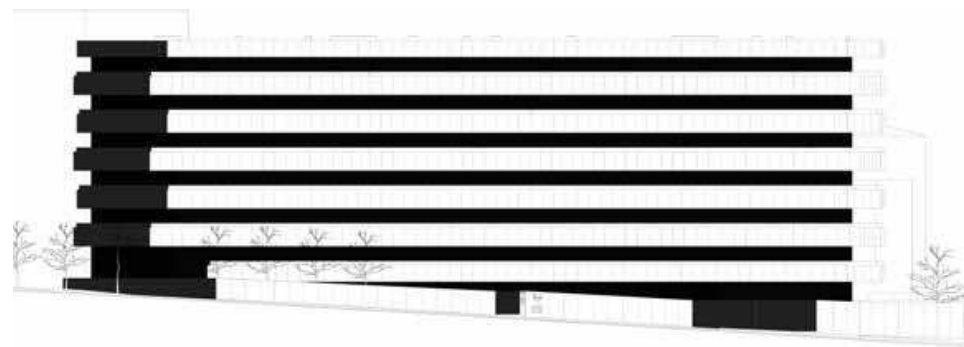
为了达到此目的, 设计师使阳台以一定角度连接, 打造出光影分明的室外空间, 既能采光又能遮阳。

考虑到社交空间的灵活运用, 室内空间被连接起来, 使用可滑动的大型落地窗连接到室外。这些玻璃表面能防止太阳直射, 简单而有效地减少能源消耗。

此外, 30% 的小区面积被腾出来用来作公共花园, 以减轻周围建筑的负担, 同时也提高周围的住宅区的品质。沿用于建筑外部区域的几何图样和材料, 决定了花园小径的铺设方向和形状。

40 套公寓 (按照种类分成 2~5 个卧室) 分布在 7 层楼, 地下 3 层则是私人停车场。人行道用的是暗光漆木, 墙壁和木器则选用淡白色基调。厨房和厕所用的是葡萄牙天然石材。

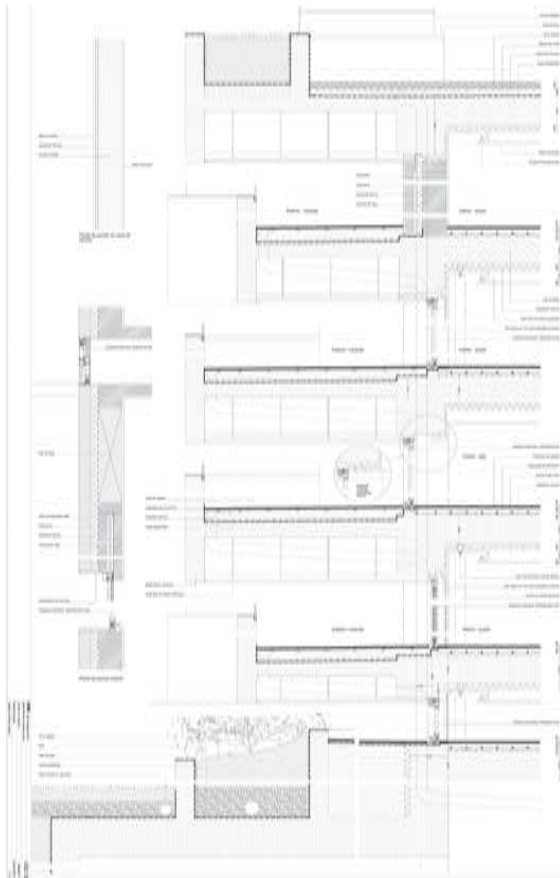
福兹生活公寓楼也同样注重可持续发展, 就像建筑本身的设计理念一样, 窗户、墙壁和覆盖层用的都是高科技绝缘材料。事实上, 控制太阳直射强度、立面的热惯量, 使用可替代能源和节电的家电都能使建筑表现出对这里的居民和他们的家园的高度尊重。



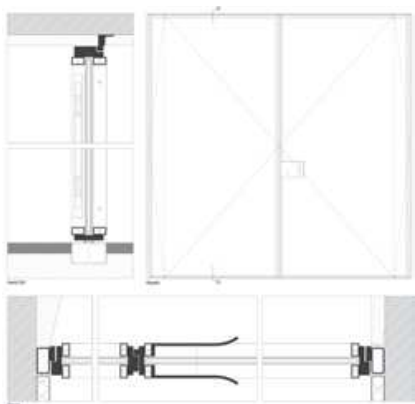
Elevation Plan 立面图







Detail Plan 1 细节图 1



Detail Plan 2 细节图 2

FEATURE 特点分析

Material

There is a contrast between the white cast-in-place concrete and the dark Glass Reinforced Concrete panels. The shape of the balconies is emphasized. The species were chosen to create a wide variety of colors and textures, and to expose or dissimulate the public and private spaces of the ground floor. The finishing materials are intended to be durable and to reproduce in the interior the contrasts between light and shadow of the exterior.

材料

白色现浇混凝土和钢筋混凝土镶板上的深色玻璃形成鲜明对比，强化了阳台的外形；不同材料的选择创造了不同的颜色和纹理，展示了首层公共场所，并隐藏起私人空间；饰面则选用了耐用，且能在室内重现外部光影对比的材料。

