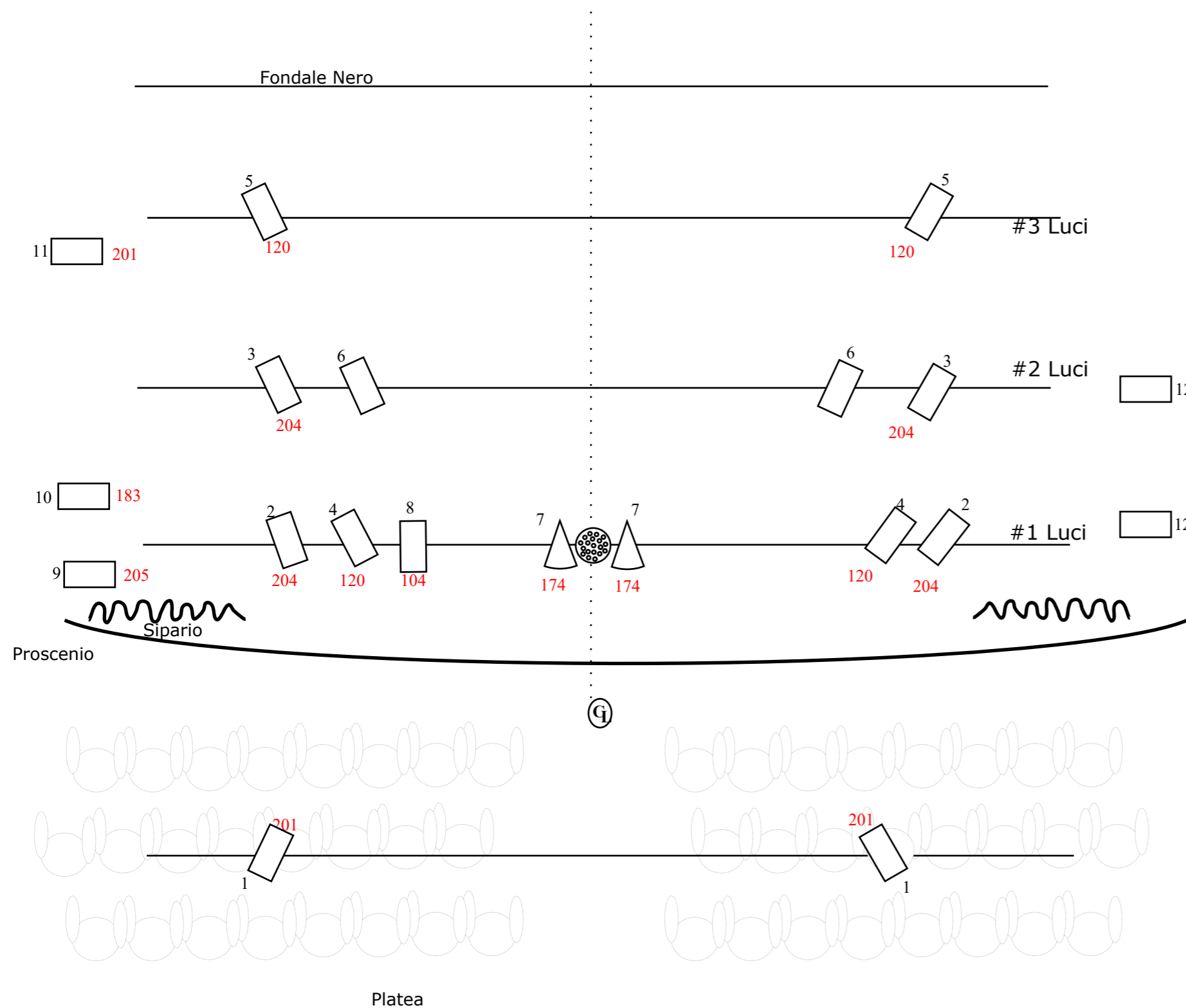



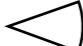

PIANTA LUCI

PINOCCHIO

Bam!Bam! Teatro



LEGENDA

-  Pc 1KW
-  Par 64 cp62
-  ETC 25° 50°

18 Pc 1KW
2 Par Cp62
1 Par Led

12 Ch Dimmer

Carico Elettrico 8 KW
Cavi elettrici e sdoppini

Impianto audio per basi
adeguato allo spazio

Spazio scenico 6x5 mt