

# Composite Panels & Substrates

For your convenience, this table provides an overview of TFL substrate ranges for ARAUCO primary brands across all facilities. **Mill-to-mill availability will vary.** Please contact your account representative for production capability and minimums. Visit [www.arauco-na.com](http://www.arauco-na.com) to review all panels grades, dimensional ranges and relevant specifications.

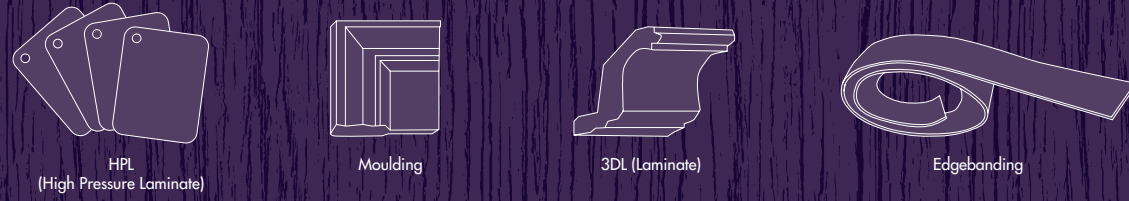


PARTICLEBOARD	Grades	Thickness Based on TFL press capacity	Dimensions Based on TFL press capacity		Potential LEED Points
			Length (in)	Width (in)	
Duraflake VESTA™ (ULEF)		3/8" - 1 3/4"	72 - 145	48 - 61	6
Duraflake®		3/8" - 1 3/4"	72 - 145	48 - 61	5
Ultra®		3/8" - 1 1/2"	72 - 145	48 - 61	5
Ultra VESTA™ (ULEF)		1/2" - 1 1/2"	72 - 145	48 - 61	6
<b>MDF</b>					
Trupan VESTA™ (ULEF)		1/4" - 1 1/4"	72 - 145	48 - 61	6
Trupan®		1/4" - 1 1/2"	72 - 145	48 - 61	5
Trupan VESTA MR50™ (NAF)		3/8" - 1 1/4"	72 - 145	48 - 49	6
<b>HDF</b>					
Fibrex VESTA™ (ULEF)		6.2mm	72 - 97	48 - 49	6
Fibrex®		6.2mm	72 - 97	48 - 49	5
Fibrex® Plus		3.0mm <sup>1</sup>	72 - 97	48 - 49	5

<sup>1</sup>ULEF Fire-rated Moisture Resistant NAF  
**Note:** 3.0 mm products are one-sided TFL only and may have an inherent warp.

## PRISM Symmetry

PRISM TFL is all matched up; complementary edgebanding, HPL, 3DL, wrapping and moulding products, and doors are available for our entire collection. The partnership we have with these suppliers will ensure that your project has a cohesive and natural look. Please refer to [prismTFL.com](http://prismTFL.com) for full listings and details.



## Sustainability

Our substrates are made from wood fiber that is sourced as recycled, recovered, FSC® certified and/or controlled, per FSC® Chain of Custody and Controlled Wood standards (FSC-C019364). VESTA ULEF/NAF technology, PRISM TFL complies with TSCA Title VI / CARB-2 and meets relevant green building standards including LEED, Green Globes, IgCC, and the CALGreen Code.

ARAUCO offers cradle-to-gate information through the industry-wide Environmental Product Declarations (EPDs) for particleboard and MDF manufactured in North America.

Want smart? Life-Cycle Assessment (LCA) data for Prism can be found within the EPDs and Transparency Briefs. ARAUCO HPDs are consistent with our responsible ingredient management policy and are complementary to our LCAs. The HPDs may also contribute to points in LEED v4.

Possible Points	LEED Category			
	MR 4 Recycled Content	MR 5 Regional Materials	MR 7 Certified Wood	IEQ 4.4 Low-emitting Materials
	1 - 2	1 - 2	1	1



## Contact Information

### Sales and Customer Service

For general information and inquiries regarding our product lines, delivery, lead-times and other ordering:

### Sales Offices

**North American Headquarters**  
 400 Perimeter Center Terrace,  
 Suite 750  
 Atlanta, GA 30346  
 Tel: 800.261.4890  
 Fax: 770.350.1658

**US Eastern Regional Center**  
 515 River Crossing Dr.,  
 Suite 110  
 Fort Mill, SC 29715  
 Tel: 877.273.7680  
 Fax: 800.808.1454

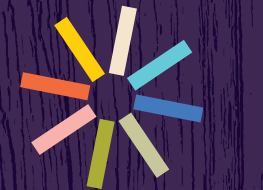
**Canadian Regional Center**  
 80 Tiverton Ct., Suite 701  
 Markham, ON L3R 0G4  
 Tel: 800.268.9830  
 Fax: 905.475.3827

**US Western Regional Center**  
 3011 Salem Avenue SE  
 Albany, OR 97321  
 Tel: 888.650.6302  
 Fax: 541.704.0132

[marketing@arauco-na.com](mailto:marketing@arauco-na.com) [www.prismTFL.com](http://www.prismTFL.com)



2019-2020 COLLECTION



**Bring the outside in.**  
 We've always had a thing for the outdoors.



**You + PRISM = A Perfect Match**



## PRISM Textures

Prism TFL panels are produced in twelve distinct textures to enhance your design selection. Check below for the mill availability for each texture.

 <b>AuthenTICK</b> • Grayling, MI • Sault Ste. Marie, ON • St. Stephen, NB	 <b>Suede</b> • All laminating facilities	 <b>Satin</b> • Bennettsville, SC • Sault Ste. Marie, ON • St. Stephen, NB	 <b>Algonquin Ash</b> • St. Stephen, NB	 <b>Woodgrain Gloss</b> • St. Stephen, NB	 <b>Boreal</b> • Albany, OR • Bennettsville, SC • Grayling, MI
 <b>Sawcut</b> • St. Stephen, NB	 <b>Taction*</b> • Bennettsville, SC • Grayling, MI	 <b>Medina</b> • Albany, OR • Bennettsville, SC • Grayling, MI • St. Stephen, NB	 <b>Timberline</b> • Albany, OR • Bennettsville, SC • Grayling, MI	 <b>Cascade</b> • St. Stephen, NB	 <b>Velvet</b> • Albany, OR • Bennettsville, SC • Grayling, MI

\*Available exclusively for Taction Oak designs and solid colors. [www.prismTFL.com](http://www.prismTFL.com)

## How to Specify

Description	Example
Design Code / Name	WF442 Chique
Texture	Velvet
Panel / Substrate	Duraflake® FR (fire-rated)
Panel Thickness and Dimension Thickness / Width / Length	3/4" x 49" x 97"

\* Texture, design and panel availability may vary by plant. Please consult with your sales representative when specifying.

Distributed by:



**PRISM is a colorful, thermally fused laminate brand that has real character with a designer-friendly focus.** Our spectrum of styles and textures will open your eyes to a bright new world of laminates! Let PRISM take your designs to the next level with true-to-life laminates that are durable and authentic to the touch. PRISM TFL is ready to install vertically, horizontally – or go diagonal! We're a smart surface that you can love.

**Bring the outside in with our newest woodgrains and textures.** With more than 80 designs including 73 exclusives, PRISM puts you right on trend with bright, inspired wood looks mixed with understated elegance. Bring the outside in with our two new textures and 16 debut designs that take cues from serene light ash, relaxed pine and subtle warm oak. Let's take the reassuring presence of our forests and turn 'em into something fun.

**PRISM TFL is all matched up!** Our Symmetry Program features a wide array of complementary products. Edgebanding, HPL, 3DL, wrapping and moulding products, and doors are available for our entire collection.

Our strong partnerships with trusted suppliers will ensure that your projects have a cohesive and natural look.

**PRISM TFL is raising the bar for the composite panel industry with the introduction of InCopper® antimicrobial technology.** This proprietary technology incorporated in all PRISM TFL exclusive designs, protects the surface of the panel, actively inhibiting the growth of microorganisms that cause deterioration, stains or degradation. The secret? Safe, naturally-occurring copper salts that remain active as long as the panel surface remains intact.



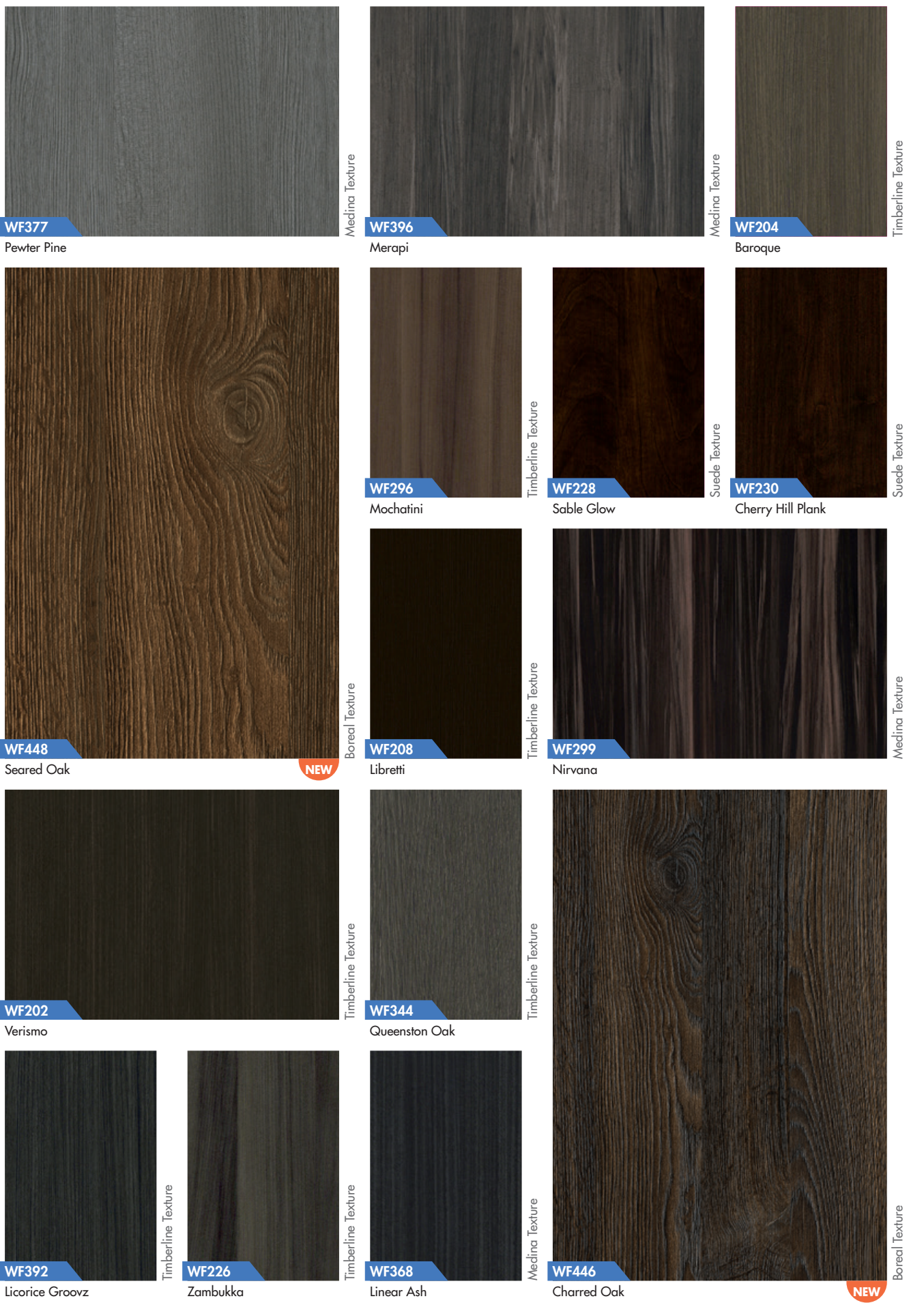
**PRISM is your perfect partner.** PRISM TFL on high quality particleboard and MDF substrate, is manufactured entirely by ARAUCO at our facilities across North America. We manage our own inventories to maintain a current and balanced design offering and a dependable supply you can count on.



**arauco**  
**PRISM**  
LOVE YOUR LAMINATES

[www.prismTFL.com](http://www.prismTFL.com)

Colors and patterns shown may differ from actual product. Please refer to actual samples before specifying.



\* SF201 Backer is a technical TFL, color may vary.