



**Swan**

*Accessible Bath Products*





SK366072, SS-7211, TK-6072, SR-3260, BF-1260 WITH BF-2300L AND BF-2448  
 CUSTOM VANITY TOP WITH ULAD-1913  
 ALL SHOWN IN TAHITI GRAY (053)

**WE'VE MADE ACCESSIBLE DESIGN SIMPLE**

When looking for ADA or Accessible bath products, Swan offers the right solution to fit your needs. Your new floor decision will be based on your new or renovation ADA requirements. Choose your floor based on area dimensions and then choose a corresponding shower wall kit.

**Why choose Swanstone on your next project?**

*The Swan line of accessible bath products is designed specifically for function, convenience and safety. Our solutions eliminate barriers, providing easy access and independence for users. Many of our bath solutions are flexible, providing you the ability to mix and match products, colors and accessories for the right fit and budget for your space.*



Swanstone is compression-molded and will not crack or craze. It's easy to clean and will not mold or mildew.

**DURABLE**



Swanstone is impervious to damage from common household culprits. Cannot be permanently stained.

**IMPERVIOUS**



Heat-resistant to 450 degrees. Heating elements will have no affect on Swanstone.

**HEAT RESISTANT**



Swanstone is impact-resistant. Five times stronger than other solid surfaces, Swanstone won't break.

**STRONG**



Swanstone is your best value for commercial applications and is backed by a 25-year limited commercial warranty. Swanstone is proudly made in the USA.

**QUALITY**



Swanstone is GREENGUARD GOLD Certified by UL Environment. Our products meet rigorous and comprehensive standards for low emissions of VOCs into indoor air.

**EDUCATION // MULTIFAMILY // HEALTHCARE // PUBLIC HOUSING  
 ASSISTED LIVING // HOSPITALITY // INSTITUTIONAL**



**STF-3838 AND ACCESSORIES SHOWN**

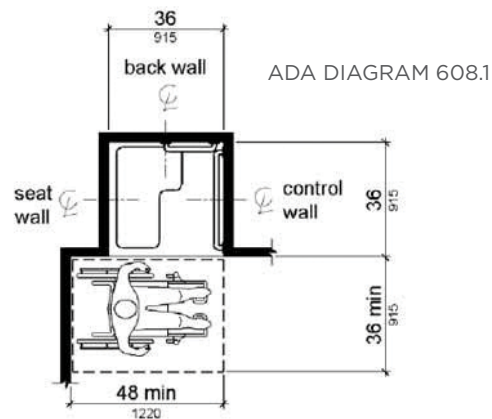


Swanstone Performix Transfer models are designed to facilitate the transfer from a wheelchair onto a shower seat. This model meets ADA accessibility requirements in existing and new bathing facilities.

### MEETS ADA 2010 REQUIREMENTS

#### 608.2.1 TRANSFER SHOWER COMPARTMENTS

*Meets ADA requirements when installed according to guidelines. Check local building code requirements.*



Note: inside finished dimensions measured at the center points of opposing sides



### ADA CODE COMPLIANT DESIGN

#### SWANSTONE PERFORMIX TRANSFER

38" x 38"                      **STF-3838**

*Interior Dimensions*    36" x 36"

*Available in Solid and Aggregate Colors*

#### CODE COMPLIANT

2016 CBC, ADA, TAS, MASS

#### COMPATIBLE SWANSTONE WALL KITS

36" x 48" x 72"                      **SK-364872**

**SK-364872**

36" x 48" x 96"                      **SK-364896**

**SK-364896**

48" x 48" x 96"                      **SK-484896**

**SK-484896**

36" x 48" x 72"                      **CCSK72-3648**

**CCSK72-3648**

36" x 48" x 96"                      **CCSK96-3648**

**CCSK96-3648**

*Wall panels are easily trimmed to fit shower floor.*

# ROLL-IN TRENCH



**SBF-3462 AND ACCESSORIES SHOWN**

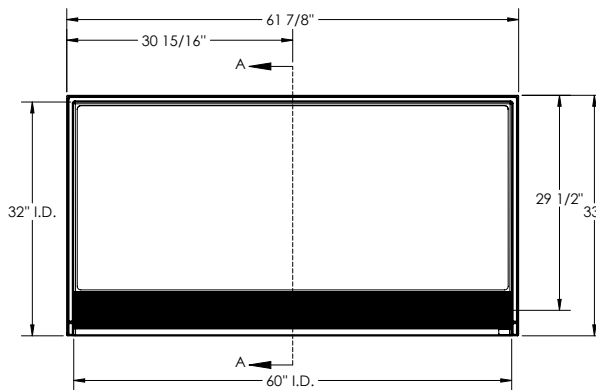
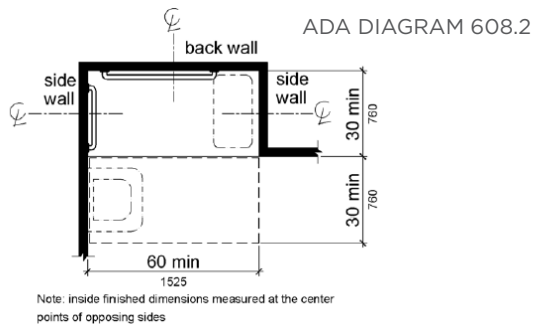


The Swanstone Performix Roll-In Trench installs directly and easily to the subfloor, which eliminates the need for expensive labor to adjust floor height. The trench drain, placed on the front edge of the floor, needs no additional ramp. This model meets ADA accessibility requirements for new and renovated bathing facilities.

### MEETS ADA 2010 REQUIREMENTS

- 608.2 STANDARD ROLL-IN TYPE SHOWER COMPARTMENTS
- 608.7 THRESHOLDS (NEW OR RENOVATION)

*Meets ADA requirements when installed according to guidelines. Check local building code requirements.*



## ADA CODE COMPLIANT DESIGN

**SWANSTONE PERFORMIX ROLL-IN**  
 34" x 62"                      **SBF-3462**  
 Interior Dimensions      32" x 60"  
 Available in Solid and Aggregate Colors

**CODE COMPLIANT**  
 2016 CBC, ADA, TAS, MASS

**COMPATIBLE SWANSTONE WALL KIT**

36" x 62" x 72"	<b>SK-366272</b>
36" x 62" x 96"	<b>SK-366296</b>
36" x 62" x 72"	<b>STMK72-3662</b>
36" x 62" x 72"	<b>SQMK72 -3662</b>
36" x 62" x 96"	<b>STMK96-3662</b>
36" x 62" x 96"	<b>SQMK96-3662</b>



**SK-364872, SS-7211, TK-6072 AND STS-3738 SHOWN IN PEBBLE (072)  
BF-5024 AND BF-2300L ACCESSORIES SHOWN**



Swanstone center drain transfer models allow easier access to the shower at a more affordable price point.

## TRANSFER SHOWER COMPARTMENTS

608.2.1 TRANSFER SHOWER COMPARTMENTS

*Meets ADA requirements when installed according to guidelines. Check local building code requirements.*

## ACCESSIBLE DESIGN

### SWANSTONE TRANSFER

37" x 38"                      **STS-3738**  
Interior Dimensions      35" x 35-1/2"  
Available in Solid and Aggregate Colors

### VERITEK TRANSFER

37" x 38"                      **FTS-3738**  
Interior Dimensions      35" x 35-1/2"  
Available in White, Bone and Bisque

### COMPATIBLE SWANSTONE WALL KITS

36" x 48" x 72"              **SK-364872**  
36" x 48" x 96"              **SK-364896**  
*Wall panels are easily trimmed to fit shower floor.  
Can be used with included corner moldings.*

36" x 48" x 72"              **CCSK72-3648**  
36" x 48" x 96"              **CCSK96-3648**  
*Wall panels are easily trimmed to fit shower floor.*



Accessible Barrier-Free Shower models are designed with a low threshold for wheelchairs to easily enter the shower. These shower floors fit standard bathtub areas and can replace a bathtub without removing existing plumbing.

**SK-366072, SS-7211, SBF-3060R AND BF-1260 SHOWN IN TAHITI WHITE (011)  
BF-5072 AND BF-2300L ACCESSORIES SHOWN**

## ACCESSIBLE DESIGN

### SWANSTONE BARRIER-FREE (REMODEL)

- 30" x 60"                    **SBF-3060L** (left-side drain)
- 30" x 60"                    **SBF-3060R** (right-side drain)
- 12" x 60"                    **BF-1260** (ramp)

*Available in Solid and Aggregate Colors*

### VERITEK BARRIER-FREE (REMODEL)

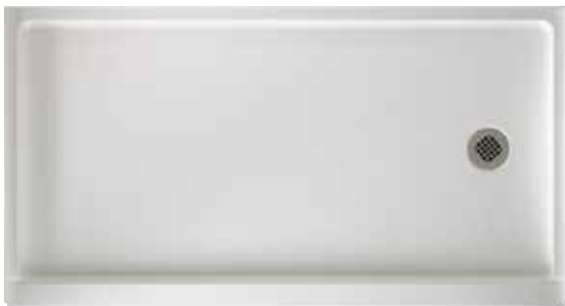
- 30" x 60"                    **FBF-3060L** (left-side drain)
- 30" x 60"                    **FBF-3060R** (right-side drain)
- 12" x 60"                    **FBF-1260** (ramp)

*Available in White, Bone and Bisque*

### COMPATIBLE SWANSTONE WALL KITS

- 36" x 60" x 72"                    **SK-366072**
- 36" x 62" x 96"                    **SK-366296**
- 36" x 62" x 72"                    **STMK72-3662**
- 36" x 62" x 72"                    **SQMK72-3662**
- 36" x 62" x 96"                    **STMK96-3662**
- 36" x 62" x 96"                    **SQMK96-3662**

*Wall panels are easily trimmed to fit shower floor.*



## SR-3260R

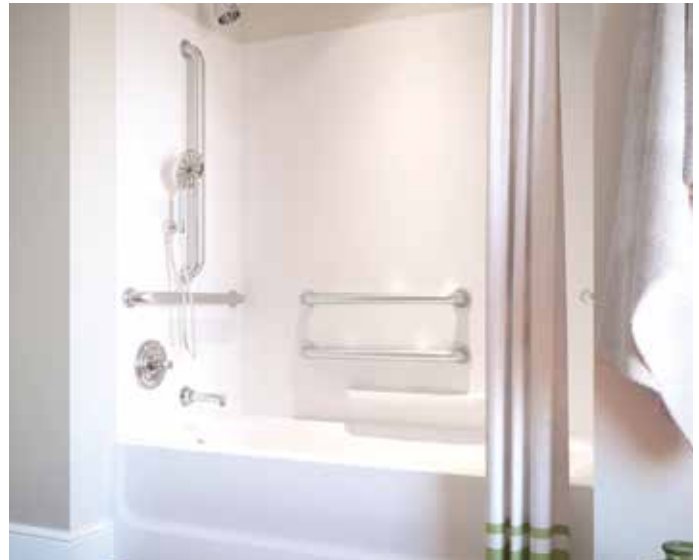
The Retrofit Shower model allows for aging in place and easier access to bathing facilities without replacing existing plumbing. This model features a lower threshold than standard floors for easy entry and exit.

### SWANSTONE RETROFIT

32" x 60" **SR-3260L** (left-side drain)  
 32" x 60" **SR-3260R** (right-side drain)  
*Available in Solid and Aggregate Colors*

### VERITEK RETROFIT

32" x 60" **FR-3260L** (left-side drain)  
 32" x 60" **FR-3260R** (right-side drain)  
*Available in White, Bone and Bisque*



**GN-58 AND BT-3060 SHOWN IN WHITE (010)**



## ACCESSIBLE DESIGN

### COMPATIBLE SWANSTONE WALL KIT

36" x 60" x 72" **SK-366072**  
 36" x 62" x 96" **SK-366296**

36" x 62" x 72" **STMK72-3662**  
 36" x 62" x 72" **SQMK72-3662**  
 36" x 62" x 96" **STMK96-3662**  
 36" x 62" x 96" **SQMK96-3662**

*Wall panels are easily trimmed to fit shower floor.*

### BATHTUB RETROFIT

30" x 60" **BT-3060L/R**  
*Available in White, Bone and Bisque*

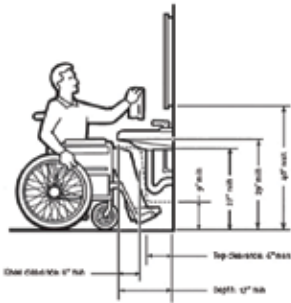
### COMPATIBLE VERITEK WALL KIT

30" x 60" x 58" **GN-58**  
*Available in White, Bone and Bisque*

*This product meets the dimensional requirements to allow for installation in ADA applications when installed to ADA guidelines.*



# OTHER ADA MODELS



## ACCESSIBLE DESIGN

### SHOWER SEATS

Folding Shower Seat

23-1/3" x 22-1/2"

**BF-2300L**

23-1/3" x 22-1/2"

**BF-2300R**

*Can be mounted to back or side walls.*

### STAINLESS STEEL GRAB BARS

24" x 48"

**BF-2448** (L-shaped)

24"

**BF-5024**

14" x 32"

**GB-1432** (L-shaped)

### STAINLESS STEEL GRAB BAR KIT

24" bar + 48" bar

**BF-5072**

*Installation instructions included on grab bar items.*

### THRESHOLDS

Removable Threshold

**BF-6000**

Flexible Threshold

**BF-FT**

Collapsible Threshold

**BF-CT**

Swan Vanity Bowls coordinate with Swanstone Custom Vanity tops for a seamless, easy-to-clean surface. All Swanstone vanity bowls and vanity tops are ADA-compliant when installed to ADA guidelines.

For commercial or residential custom applications, easily configure your ADA-compliant vanity top using our Custom Vanity Top designer at [customvanity.swanstone.com](http://customvanity.swanstone.com).

For specification information on all our ADA-compliant products visit [swanstone.com](http://swanstone.com).

---

#### VANITY BOWLS

UL-1613

UL-1913

UC-1913

ULAD-1913

---

#### VANITY TOP FINISHING KIT

VTS-50ADA

VTS-74ADA

#### ELLIPSE VANITY TOPS

17" W SINGLE BOWL

VT1B1719

19" W SINGLE BOWL

VT1B1925  
VT1B1931  
VT1B1937

22" W SINGLE BOWL

VT1B2225  
VT1B2231  
VT1B2237  
VT1B2243  
VT1B2249  
VT1B2255  
VT1B2261

22" W DOUBLE BOWL

VT2B2261

---

#### CONTOUR VANITY TOPS

22" W SINGLE BOWL

CV-2225  
CV-2231  
CV-2237  
CV-2243  
CV-2249

---

#### CHESAPEAKE VANITY TOPS

22" W SINGLE BOWL

CH1B2225  
CH1B2231  
CH1B2237  
CH1B2243  
CH1B2249  
CH1B2255  
CH1B2261

22" W DOUBLE BOWL

CH2B2261  
CH2B2273

---

#### EUROPA VANITY TOPS

22" W SINGLE BOWL

EV1B2225  
EV1B2231  
EV1B2237  
EV1B2243  
EV1B2249  
EV1B2255  
EV1B2261



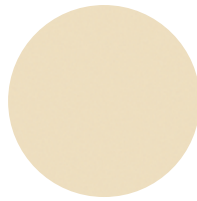
# SWANSTONE COLORS



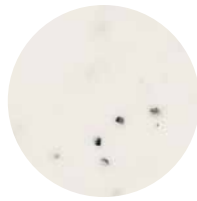
**WHITE (010)**



**BISQUE (018)**



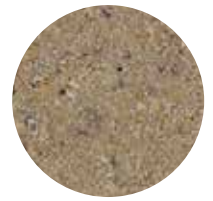
**BONE  
(037)**



**ARCTIC GRANITE  
(035)**



**BABY'S BREATH  
(168)**



**BARLEY  
(091)**



**BERMUDA SAND  
(040)**



**CANYON 🌿  
(124)**



**CLOUD BONE  
(126)**



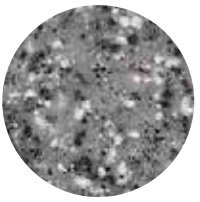
**CLOUD WHITE (125)**



**GLACIER 🌿  
(121)**



**GOLDEN STEPPE  
(128)**



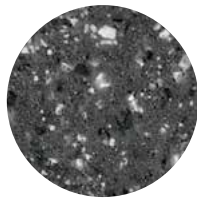
**GRAY GRANITE  
(042)**



**ICE  
(130)**



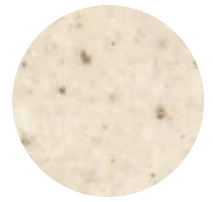
**MOUNTAIN  
HAZE (129)**



**NIGHT SKY  
(012)**



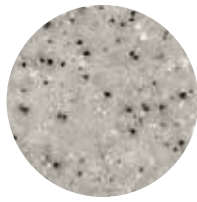
**PRAIRIE 🌿 (122)**



**PEBBLE  
(072)**



**TAHITI DESERT  
(050)**



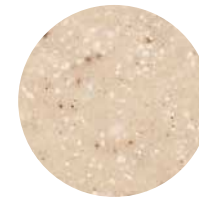
**TAHITI GRAY  
(053)**



**TAHITI IVORY (059)**



**TAHITI MATRIX  
(058)**



**TAHITI SAND  
(051)**



**TAHITI WHITE (011)**



**TUNDRA  
(131)**

🌿 *Our Planet Colors/ Eco - Friendly*

*Not all products available in all colors. Color representation not exact. Please view actual product or sample.*



Swan Surfaces, LLC | (800)-325-7008 | swanstone.com



