



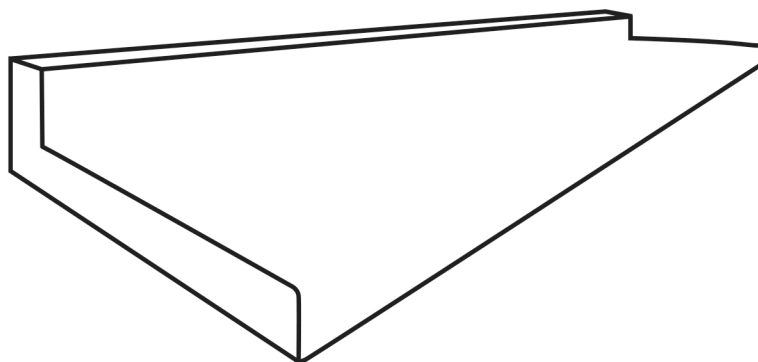
# **COUNTERTOP**

**specifications**

MANUFACTURED FROM **SWANSTONE SOLID SURFACE** | RECOMMENDED FOR HIGH-USE TRAFFIC AREAS AND COMMERCIAL SURFACES

## FEATURES

- Swanstone reinforced solid surface means color and texture run all the way through and can be easily sanded, buffed and renewed
- Molded, one-piece countertop construction
- Recommended for high-wear commercial applications
- Designed for standard countertop applications
- Seamless 1-1/2" front and side edges reduces fabrication costs
- Less fabrication required to finish job
- Integral 3-1/2" seamless backsplash included
- Undermount or drop-in sinks available in matching colors
- Recommended for high wear commercial surfaces
- Chemical and fire resistant – Class 1A rating
- Superior heat resistance up to 450 degrees
- Easy installation



**KT25145** – .40" x 25" x 145"

## SPECIFICATIONS

MODEL	PART	NOMINAL DIMENSIONS
KT25145	KT25145	.40" x 25" x 145" with integral 3 1/2" integral backsplash

## ACCESSORIES

- All undermount or drop-in Granite and Swanstone kitchen sinks.
- Color-coordinated acrylic adhesive and silicone.

## STANDARDS AND RATINGS

- American National Standard Institute—ANSI Z124.6
- International Association of Plumbing and Mechanical Officials (IAPMO)—Listed
- Uniform Plumbing Code (UPC) listed—Certified to CSA Test Standard B45.5 by IAPMO
- National Sanitation Foundation-NSF/ANSI 51 Food Equipment Materials

For a complete list of tests and results see the Technical Data Sheet.

## MAINTENANCE AND CLEANING INFORMATION

Clean your Swanstone countertop by using abrasive cleaners or other similar products. Use of a nylon scouring pad or Mr. Clean® Magic Eraser® is also recommended. Food-based stains can be removed using a 50-50 mix of bleach and water solution and soaking for 15 minutes.

## AGGREGATE COLORS

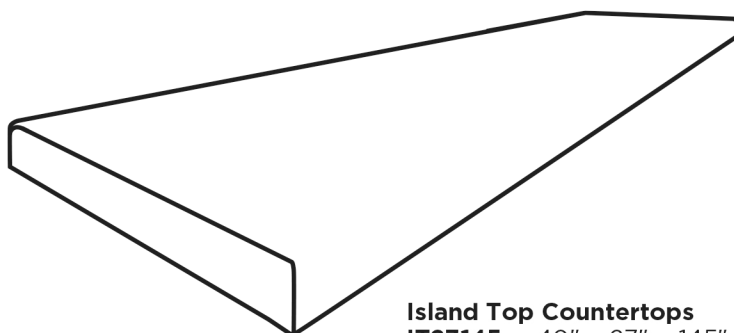
- Arctic Granite (035)
- Baby's Breath (168)
- Barley (091)
- Bermuda Sand (040)
- Canyon (124) 
- Glacier (121) 
- Gray Granite (042)
- Night Sky (012)
- Pebble (072)
- Prairie (122) 
- Tahiti Desert (050)
- Tahiti Gray (053)
- Tahiti Ivory (059)
- Tahiti Matrix (058)
- Tahiti Sand (051)
- Tahiti White (011)

 Our Planet, eco-friendly colors

MANUFACTURED FROM **SWANSTONE SOLID SURFACE** | RECOMMENDED FOR HIGH-USE TRAFFIC AREAS AND COMMERCIAL SURFACES

## FEATURES

- Swanstone reinforced solid surface means color and texture run all the way through and can be easily sanded, buffed and renewed
- Recommended for high-wear commercial applications
- Molded, one-piece countertop construction
- Designed for standard countertop applications
- Seamless 1-1/2" front and side edges
- Undermount or drop-in sinks available in matching colors
- Chemical and fire resistant – Class 1A rating
- Superior heat resistance up to 450 degrees
- Easy installation



**Island Top Countertops**  
**IT27145** – .40" x 27" x 145"  
**IT3698** – .40" x 36" x 98"  
**NB25145** – .40" x 25-1/2" x 145"

## SPECIFICATIONS

MODEL	PART	NOMINAL DIMENSIONS
IT27145	IT27145	.40" x 27" x 145" with 1½" front, back and side edges
IT3698	IT03698	.40" x 36" x 98" with 1½" front, back and side edges
NB25145	NB25145	.40" x 25-1/2" x 145" with 1½" front and side edges only

## AGGREGATE COLORS

- Arctic Granite (035)
- Baby's Breath (168)
- Barley (091)
- Bermuda Sand (040)
- Canyon (124) 🍃
- Glacier (121) 🍃
- Gray Granite (042)
- Night Sky (012)
- Pebble (072)
- Prairie (122) 🍃
- Tahiti Desert (050)
- Tahiti Gray (053)
- Tahiti Ivory (059)
- Tahiti Matrix (058)
- Tahiti Sand (051)
- Tahiti White (011)

🍃 Our Planet, eco-friendly colors

## ACCESSORIES

- All undermount or drop-in Granite and Swanstone kitchen sinks.
- Color-coordinated acrylic adhesive and silicone.

## STANDARDS AND RATINGS

- American National Standard Institute—ANSI Z124.6
- International Association of Plumbing and Mechanical Officials (IAPMO)—Listed
- Uniform Plumbing Code (UPC) listed—Certified to CSA Test Standard B45.5 by IAPMO
- National Sanitation Foundation—NSF/ANSI 51 Food Equipment Materials

For a complete list of tests and results see the Technical Data Sheet.

## MAINTENANCE AND CLEANING INFORMATION

Clean your Swanstone countertop by using abrasive cleaners or other similar products. Use of a nylon scouring pad or Mr. Clean® Magic Eraser® is also recommended. Food-based stains can be removed using a 50-50 mix of bleach and water solution and soaking for 15 minutes.



# COUNTERTOP SHEETS

## .40" SWANSTONE FABRICATION COUNTERTOP SHEETS

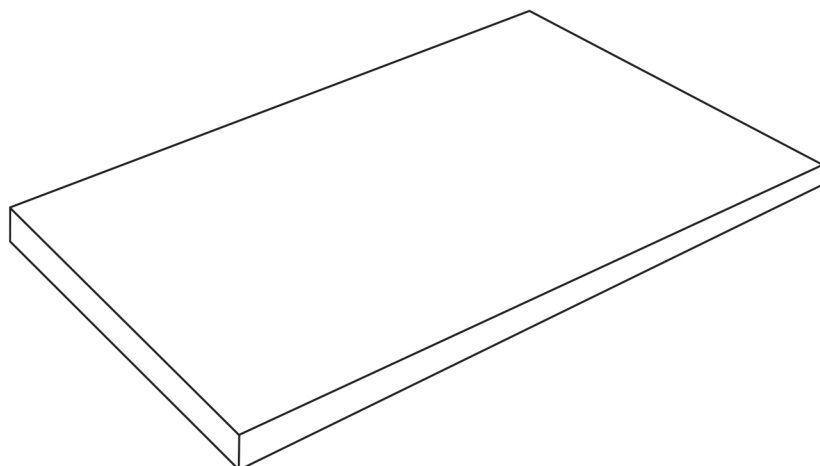
### SP048964X/SP30145X



MANUFACTURED FROM **SWANSTONE SOLID SURFACE** | RECOMMENDED FOR HIGH-USE TRAFFIC AREAS AND COMMERCIAL SURFACES

### FEATURES

- Swanstone reinforced solid surface means color and texture run all the way through and can be easily sanded, buffed and renewed
- Recommended for high-wear commercial applications
- Designed for non-standard countertop applications
- Undermount or drop-in sinks available in coordinating colors
- Chemical and fire resistant – Class 1A rating
- Superior heat resistance up to 450 degrees
- Easy installation



**Due to the manufacturing process of Swanstone fabricated countertop sheets, color will vary slightly. Please see fabrication finish color sample for comparison.**

**Matching Backsplashes Available**  
**4" Backsplash**  
**MB4145SX – 4" x 145"**

**3" Backsplash**  
**MB3145SX – 3" x 145"**

### SPECIFICATIONS

MODEL	PART	NOMINAL DIMENSIONS
<b>.40" COUNTERTOP SHEET</b>		
SPO48964X	SPO48964X	.40" x 48" x 96"
SP301454X	SP301454X	.40" x 30" x 145"
<b>BACKSPLASH</b>		
MB4145SX	MB04145SX	4" x 145"
MB3145SX	MB03145SX	3" x 145"

### AGGREGATE COLORS FOR CUSTOM APPLICATIONS

- Custom Arctic Granite (035X)
- Custom Baby's Breath (168X)
- Custom Barley (091X)
- Custom Bermuda Sand (040X)
- Custom Canyon (124X)
- Custom Glacier (121X)
- Custom Gray Granite (042X)
- Custom Night Sky (012X)
- Custom Pebble (072X)
- Custom Prairie (122X)
- Custom Tahiti Desert (050X)
- Custom Tahiti Gray (053X)
- Custom Tahiti Ivory (059X)
- Custom Tahiti Matrix (058X)
- Custom Tahiti Sand (051X)
- Custom Tahiti White (011X)

### PREMIUM/CRYSTAL COLORS FOR CUSTOM APPLICATIONS

- Caramel Glass (133)
- Crystal Black (107)
- Crystal Cream (106)
- Crystal White (105)
- Gray Glass (134)
- Ivory Glass (132)

Our Planet Colors

### ACCESSORIES

- All undermount or drop-in Granite and Swanstone kitchen sinks.
- Color-coordinated acrylic adhesive and silicone.
- Full height backsplash available.

### STANDARDS AND RATINGS

- American National Standard Institute—ANSI Z124.6
- International Association of Plumbing and Mechanical Officials (IAPMO)—Listed
- Uniform Plumbing Code (UPC) listed—Certified to CSA Test Standard B45.5 by IAPMO
- National Sanitation Foundation-NSF/ANSI 51 Food Equipment Materials

For a complete list of tests and results see the Technical Data Sheet.

### MAINTENANCE AND CLEANING INFORMATION

Clean your Swanstone countertop by using abrasive cleaners or other similar products. Use of a nylon scouring pad or Mr. Clean® Magic Eraser® is also recommended. Food-based stains can be removed using a 50-50 mix of bleach and water solution and soaking for 15 minutes.







# SWANSTONE SHEETS

## .25" SWANSTONE FABRICATION SHEETS

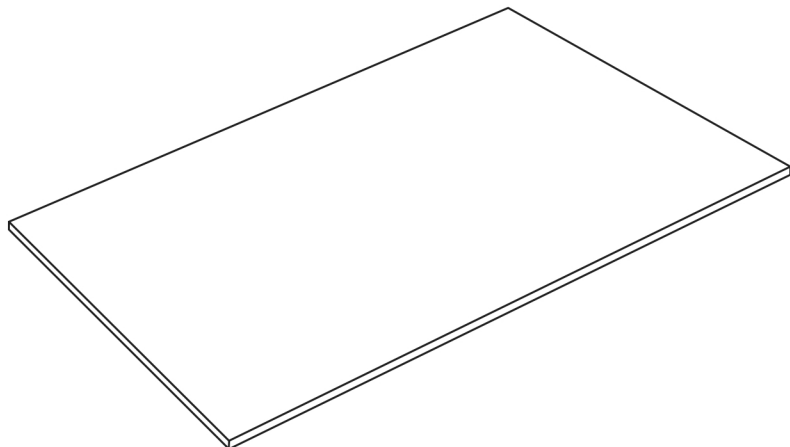
### SP30145SX/SP04896SX



MANUFACTURED FROM **SWANSTONE SOLID SURFACE** | RECOMMENDED FOR HIGH-USE TRAFFIC AREAS AND COMMERCIAL SURFACES

## FEATURES

- Swanstone reinforced solid surface means color and texture run all the way through and can be easily sanded, buffed and renewed
- Recommended for high-wear commercial applications
- Designed for non-standard countertop applications
- Undermount or drop-in sinks available in coordinating colors
- Chemical and fire resistant – Class 1A rating
- Superior heat resistance up to 450 degrees
- Easy installation



**Due to the manufacturing process of Swanstone fabricated countertop sheets, color will vary slightly. Please see fabrication finish color sample for comparison.**

## SPECIFICATIONS

MODEL	PART	NOMINAL DIMENSIONS
-------	------	--------------------

### .25" FABRICATION SHEET

SP04896SX	SP048964SX	.25" x 48" x 96"
SP30145SX	SP301454SX	.25" x 30" x 145"

## ACCESSORIES

- All undermount or drop-in Granite and Swanstone kitchen sinks.
- Color-coordinated acrylic adhesive and silicone.
- Full height backsplash available.

## STANDARDS AND RATINGS

- American National Standard Institute—ANSI Z124.6
- International Association of Plumbing and Mechanical Officials (IAPMO)—Listed
- Uniform Plumbing Code (UPC) listed—Certified to CSA Test Standard B45.5 by IAPMO
- National Sanitation Foundation-NSF/ANSI 51 Food Equipment Materials

For a complete list of tests and results see the Technical Data Sheet.

## AGGREGATE COLORS FOR CUSTOM APPLICATIONS

- Custom Arctic Granite (035X)
- Custom Baby's Breath (168X)
- Custom Barley (091X)
- Custom Bermuda Sand (040X)
- Custom Canyon (124X)
- Custom Glacier (121X)
- Custom Gray Granite (042X)
- Custom Night Sky (012X)
- Custom Pebble (072X)
- Custom Prairie (122X)
- Custom Tahiti Desert (050X)
- Custom Tahiti Gray (053X)
- Custom Tahiti Ivory (059X)
- Custom Tahiti Matrix (058X)
- Custom Tahiti Sand (051X)
- Custom Tahiti White (011X)

## PREMIUM/CRYSTAL COLORS FOR CUSTOM APPLICATIONS

- Caramel Glass (133)
- Crystal Black (107)
- Crystal Cream (106)
- Crystal White (105)
- Gray Glass (134)
- Ivory Glass (132)

Our Planet Colors

## MAINTENANCE AND CLEANING INFORMATION

Clean your Swanstone countertop by using abrasive cleaners or other similar products. Use of a nylon scouring pad or Mr. Clean® Magic Eraser® is also recommended. Food-based stains can be removed using a 50-50 mix of bleach and water solution and soaking for 15 minutes.

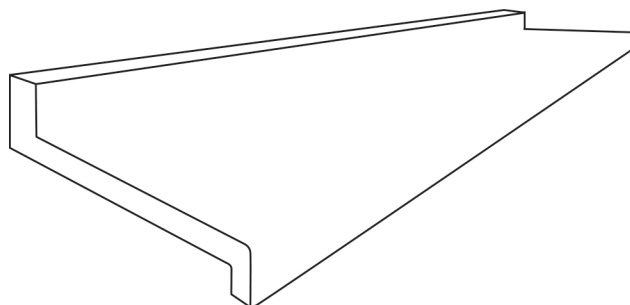


**MADE IN USA**

MANUFACTURED FROM **SWANSTONE SOLID SURFACE** | RECOMMENDED FOR HIGH-USE TRAFFIC AREAS AND COMMERCIAL SURFACES

### FEATURES

- Swanstone reinforced solid surface means color and texture run all the way through and can be easily sanded, buffed and renewed
- Molded, one-piece countertop construction
- Recommended for high-wear commercial applications
- Five times more impact resistant than other solid surfaces
- A great alternative to cultured marble or tile tops
- Seamless undermount Swanstone solid color bowls available in matching colors
- Vanity tops have integrated 3-1/2" coved backsplashes
- Vanity tops have seamless 1-1/2" front edges
- Chemical and fire resistant – Class 1A rating
- Superior heat resistance up to 450 degrees
- Stands up to harsh chemicals and heat
- Can simplify custom vanity fabrication efforts



**Swanstone Vanity Blank Tops without Bowls**  
**VW2297** – 22" x 97"  
**VW2122** – 22" x 122"

### SPECIFICATIONS

MODEL	PART	NOMINAL DIMENSIONS
VW2297	VW02297	22" x 97"
VW2122	VW22122	22" x 122"

### ACCESSORIES

- All undermount, vessel or drop-in Swanstone bathroom sinks.
- Color-coordinated acrylic adhesive and silicone.
- Matching bath walls and shower floors available.

### STANDARDS AND RATINGS

- American National Standard Institute—ANSI Z124.6
- International Association of Plumbing and Mechanical Officials (IAPMO)—Listed
- Uniform Plumbing Code (UPC) listed—Certified to CSA Test Standard B45.5 by IAPMO

For a complete list of tests and results see the Technical Data Sheet.

### MAINTENANCE AND CLEANING INFORMATION

Clean your Swanstone countertop by using abrasive cleaners or other similar products. Use of a nylon scouring pad or Mr. Clean® Magic Eraser® is also recommended. Food-based stains can be removed using a 50-50 mix of bleach and water solution and soaking for 15 minutes. For rust or other mineral stains, rust-removing products are acceptable.

### AGGREGATE COLORS

- Arctic Granite (035)
- Baby's Breath (168)
- Barley (091)
- Bermuda Sand (040)
- Cloud Bone (126)
- Cloud White (125)
- Canyon (124) 
- Glacier (121) 
- Gray Granite (042)
- Night Sky (012)
- Pebble (072)
- Prairie (122) 
- Tahiti Desert (050)
- Tahiti Gray (053)
- Tahiti Ivory (059)
- Tahiti Matrix (058)
- Tahiti Sand (051)
- Tahiti White (011)
-  Our Planet, eco-friendly colors

# SWANSTONE FABRICATION COLORS FOR CUSTOM APPLICATIONS

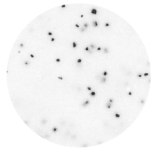
Due to the fabrication process, some Swanstone Fabrication colors will show more variance from its comparable Swanstone Color. Color representation not exact. Please view actual product or color sample. Integral bowls and coordinating shower floors, walls and accessories are available in the following Swanstone Fabrication Colors. ♻ Indicates Our Planet, eco-friendly colors.



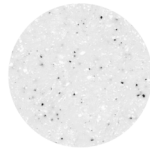
Custom  
Glacier  
(121X) ♻



Custom  
Tahiti White  
(011X)



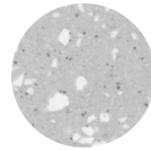
Custom  
Arctic Granite  
(035X)



Custom  
Tahiti Matrix  
(058X)



Custom  
Baby's Breath  
(168X)



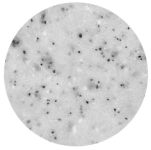
Custom  
Pebble  
(072X)



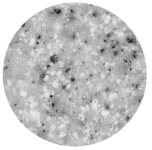
Custom  
Tahiti Ivory  
(059X)



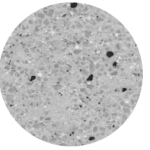
Custom  
Tahiti Sand  
(051X)



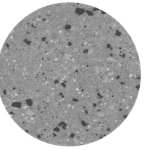
Custom  
Tahiti Desert  
(050X)



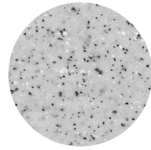
Custom  
Bermuda Sand  
(040X)



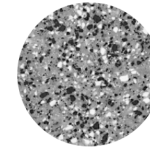
Custom  
Prairie  
(122X) ♻



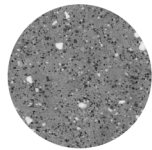
Custom  
Barley  
(091X)



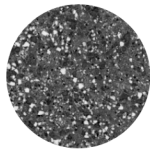
Custom  
Tahiti Gray  
(053X)



Custom  
Gray Granite  
(042X)



Custom  
Canyon  
(124X) ♻



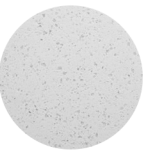
Custom  
Night Sky  
(012X)

## SWANSTONE FABRICATION PREMIUM COLORS

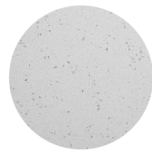
Available in countertop sheets or custom vanities only.



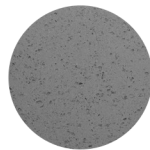
Crystal White  
(105)



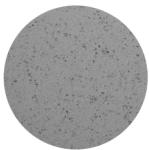
Ivory Glass  
(132)



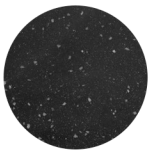
Crystal Cream  
(106)



Caramel Glass  
(133)



Gray Glass  
(134)



Crystal Black  
(107)

## AVAILABLE BOWL COLORS

Available bowls options colors with Premium Colors



White  
(010)



Bisque  
(018)



Swan | St. Louis, MO 63101 | 800.325.7008 | swanstone.com



/swantransforms

#300-1216