



 **ABG HOSPITALITY**
EXPERIENCE BY DESIGN.

Hospitality **Bathware Solutions**



Hospitality solutions that create an exceptional guest experience for any hospitality property, from economy or select service, to premium. ABG Hospitality focuses on the customer experience, partnering with you to design innovative solutions, bringing to life the guest experience, while providing superior products from trusted American Bath Group brands.

Visit us at
ABGHospitality.com



Innovative Hospitality Solutions

Premium Offering

Coastal Shower Doors



coastalshowerdoors.com

Swan Walls



swanstone.com

Wellness Suites featuring Steam Showers

Freestanding Bathtubs

mr.steam®

mrsteam.com

MAIDSTONE

maidstonesupply.com

Select Offering

Bootz Porcelain Enameled Products

DreamLine Doors



dreamline.com

IMI Cast Marble LiteCast™ and MasterCast™



imitoday.com

Classic Offering

Aquatic Products

Bootz Porcelain Enameled Products



bootz.com



aquaticbath.com

Sustainability

Our Commitment to Eco-Friendly Hospitality

Each of these certifications demonstrates a commitment to sustainability and reducing environmental impact. By using products that are certified by these programs, companies can show their commitment to sustainability and help reduce their environmental impact.



The GREENGUARD Certification is a program that verifies products for low chemical emissions, ensuring they meet rigorous indoor air quality standards. By testing for over 10,000 chemicals, it certifies products like furniture, building materials, and cleaning products as safe for indoor use.



The MAS Certified Green program evaluates products for their environmental impact throughout their lifecycle, focusing on chemical emissions, energy efficiency, and sustainability. Products meeting these standards aim to minimize environmental impact from production to disposal.



MindClick is a certification program that evaluates products for sustainability and social responsibility, focusing on environmental impact, labor and human rights, and community engagement. It targets products in the hospitality industry, like linens and bath products, ensuring they meet specific standards.



Minimizing Our Environmental Footprint

At ABG Hospitality, we are committed to promoting sustainability in all aspects of our operations. Here are some of the ways we are working to reduce our impact on the environment:

Recycling & Reusing

We prioritize a circular economy by recycling over 90% of our scrap materials and using recycled fiberglass for our products, significantly reducing our environmental footprint.

Reducing VOCs & Pollutants

We are dedicated to improving air quality by significantly lowering VOCs and pollutants, ensuring healthier environments and manufacturing high-quality products with minimal environmental impact.

Reducing Consumption

We've cut solvent use by 40% with an on-site recovery system, conserving resources and lessening our environmental footprint.

Commitment to Reduction Programs

Our aggressive program has greatly cut down on paper, wood, and other materials usage, promoting sustainability and reducing our environmental impact.

PREMIUM COLLECTION



PREMIUM



PREMIUM COLLECTION

Coastal Gridscape® Shower Door

Fixed Panel

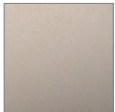
A fresh and sophisticated frame-less curved glass design with a European style. Its elegant aesthetic enhances any bathroom, merging modern style with functional durability for a truly transformative experience.

- Quality 1/4" (6 mm) thick certified clear tempered glass
- Reversible for a right or left wall installation to fit your specific layout

AVAILABLE FINISHES:



CHROME



BRUSHED
NICKEL



OIL
RUBBED
BRONZE



SATIN
BLACK



PREMIUM COLLECTION

Coastal Gridscape® Synthesis™

Frameless Pivot Door

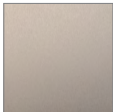
Everything extraordinary about the iconic Gridscape® series merged seamlessly with the frameless elegance of the Synthesis. With an array of hinge, panel and mullion options to choose from, the versatile styles of the Gridscape® Synthesis become uniquely your own.

- 3/8" or 1/2" thick glass for a sturdy build
- Pivot hinge door for inward and outward swing

AVAILABLE FINISHES:



CHROME



BRUSHED
NICKEL



MATTE
BLACK



PREMIUM COLLECTION

Coastal Eclipse™

Frameless Sliding Door

Named after the celestial phenomenon, the sleek and modern Eclipse™ Series features overlapping panels with smooth-gliding rollers with the exact function of a true barn door. This adaptable door has an anodized aluminum frame, stainless-steel handles, brackets and fasteners that deliver a functional, contemporary style balanced by its rustic, yet timeless hardware.

- 24" vertical square handle
- Anodized hardware will not chip or rust
- It is recommended to install the door on the same side as the showerhead.

AVAILABLE FINISHES:



MATTE
BLACK



PREMIUM COLLECTION

Coastal Custom Glass Designs

Coastal Gridscape

We specialize in providing custom printed glass shower doors, tailored specifically for the hospitality industry. We offer an exclusive service that allows hotels to personalize their shower doors with custom designs, logos, or patterns, aligning with their brand identity or decor.

Utilizing advanced printing technology, we ensure high-resolution images and vibrant colors that are embedded into the glass for durability and resistance to wear and tear. This feature not only elevates the aesthetic appeal of hotel bathrooms but also enhances the overall guest experience by adding a unique, luxurious touch to their stay.





PREMIUM COLLECTION

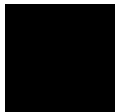
Maidstone Horizon Translucent Resin

Free-Standing Tub

Immerse in elegance with the Horizon Tub. Crafted from solid resin, and available in Blue and Black hues the Horizon Translucent Resin Freestanding Tub offers a sublime bathing experience in your master bathroom. Its impeccable design exudes sophistication, providing an oasis for serene relaxation. Elevate your space with this fusion of style and leisure.

- Solid Surface is a proprietary, premium blend of natural and man-made materials, engineered to maximize durability and comfort
- UPC Certified, NPC Certified, & Meets ASME A112.18.1
- All clear tubs come with matte black drain

AVAILABLE FINISHES:



BLACK



BLUE



PREMIUM COLLECTION

Swan Solid Surface Wall Surrounds

Shower Wall Kit

Explore our Solid Surface Wall Surrounds Shower Wall Kit, designed for effortless installation and maintenance, providing an ideal solution for your shower space. This kit comes in a variety of standard sizes, colors, and patterns, ensuring a perfect match for any design style. Select patterns feature a textured grout line for a realistic, easy-care enhancement. Additionally, the anti-microbial, renewable surface ensures a clean, long-lasting finish!

- Anti-microbial, renewable surface
- Heat resistant up to 450 degrees
- Impact and corrosion-resistant

AVAILABLE FINISHES:





SELECT COLLECTION



SELECT



SELECT COLLECTION

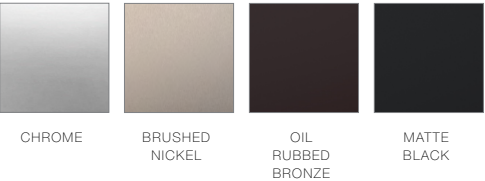
IMI Marla

Barn Style Bypass Shower Door

Discover the modern elegance of our barn-style dual bypass sliding shower door, crafted from fully frameless tempered glass available in either 10mm (3/8") or 8mm (5/16") thickness. This design features two stainless steel towel-bar style handles for added convenience. The door glides effortlessly on adjustable stainless steel wheels, complemented by an aluminum top rail, threshold, and wall profiles. For a seamless fit, anti-collision blocks in the wall profiles allow for up to 3/8" out of plumb adjustments.

- Available sizes from 48" wide to 72" wide by 78" tall
- GlassShield Shatter Resistant Technology available as an option

AVAILABLE FINISHES:





SELECT COLLECTION

IMI Strata

Bypass Shower Door

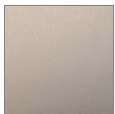
Experience the sleek elegance of the Strata Bypass Shower Door, featuring a fully frameless design with either 10mm (3/8") or 8mm (5/16") tempered glass. This dual bypass sliding door incorporates a stylish header, complemented by adjustable gliding wheels within the stainless steel frame for smooth operation. An aluminum threshold offers up to 3/8" out of plumb adjustment, ensuring a perfect fit in any space!

- Available sizes from 48" wide to 72" wide by 78" tall
- Available with Frosted Glass
- GlassShield Shatter Resistant Technology available as an option

AVAILABLE FINISHES:



CHROME



BRUSHED
NICKEL



OIL
RUBBED
BRONZE



MATTE
BLACK



SELECT COLLECTION

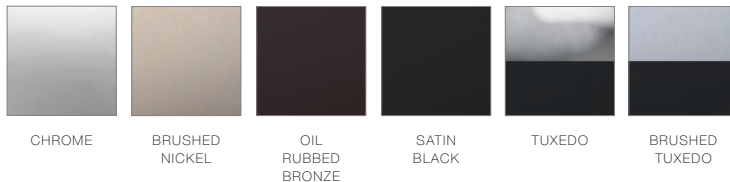
Dreamline Enigma-XO Glass

Barn-Style Single Sliding Shower Enclosure

The DreamLine Enigma-XO shower door, tub door, or enclosure is the combination of elegance and style brought together within a modern and fully frameless design. The striking stainless steel hardware delivers a perfect mix of exceptional quality and cool urban style.

- Premium 3/8" (10 mm) thick certified tempered glass with exclusive ClearMax water and stain resistant glass coating
- Model can be trimmed up to 4" for width adjustment

AVAILABLE FINISHES:





SELECT COLLECTION

Dreamline Unidoor Shower Door

Frameless Door

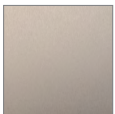
The elegant design and an incredible range of sizes are combined in the Unidoor for the look of custom glass at an unparalleled value. The Unidoor collection adds timeless style to any bathroom space with clean lines, modern accents, and an upscale look.

- 3/8" (10mm) thick clear tempered glass
- 1/2" adjustment for out-of-plumb or overall width on stationary panel side
- Reversible for right or left door opening
- Solid brass wall-mount, self-closing hinges

AVAILABLE FINISHES:



CHROME



BRUSHED
NICKEL



OIL
RUBBED
BRONZE



MATTE
BLACK



SELECT COLLECTION

Dreamline Flex Shower Door

Pivot Door

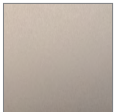
This elegant frameless pivot door features a sleek glass design, available in both clear and fingerprint-free frosted options. It offers up to 4 inches of adjustability for the perfect fit: 1" in the wall profile to accommodate out-of-plumb conditions or adjust the overall width on the stationary panel side, and 3" in the expandable rails for additional width flexibility. The pivot door hardware ensures smooth operation, making it a stylish and functional choice for any modern space.

- 1/4" (6mm) thick, clear tempered glass
- Reversible for right or left installation

AVAILABLE FINISHES:



CHROME



BRUSHED
NICKEL



SELECT COLLECTION

IMI Meter-U Door

Hinged Glass Door With Fixed Panel

IMI is excited to showcase our extensive selection of Frameless Hinged Shower Glass Doors, each paired with a Custom Fixed Panel, specifically crafted to meet the distinct requirements of any Hospitality project. Our doors are designed frameless, offering a contemporary, streamlined appearance!

- Single hinged door with an inline panel to the ceiling
- Polycarbonate water proof seal strips
- Reversible for right or left door opening

AVAILABLE FINISHES:



CHROME



SELECT COLLECTION

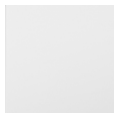
IMI FeatherCast™ Solid Surface

Trench Base Shower Base

Introducing our Trench Base Shower, a one-piece solution designed for effortless installation and exceptional durability. Crafted from non-porous material, it offers unmatched resistance to mold and mildew, ensuring easy cleaning and minimal maintenance. Our use of innovative and state-of-the-art molds guarantees a consistently high-quality product!

- Bases are pre-leveled intended for installation directly onto subflooring
- Easy-to-clean anti-slip textured pan bottom surface
- Factory-installed fiberglass flanges allow for a watertight shower base solution

AVAILABLE FINISHES:



SOLID WHITE



SELECT COLLECTION

IMI Theorem Multidimensional Pattern

MasterCast™ Cultured Marble Wall Surrounds - Textured Tile Series

Enhance your bathroom with our shower wall panels, featuring smooth side walls up to 40"W x 98"H and textured back walls in two pieces up to 62"W x 98"H. With a nominal 1/4" thickness and slight variance for depth, these panels are designed to resist mold, mildew, bacteria, heat, and scratches. Fully compliant with ANSI and ASTM fire safety standards and MAS Certified Green for eco-friendly durability.

- Optional Accessories: Soap dishes, Shampoo shelves, Footrests
- Additional accessories available upon request (minimum quantities apply)

AVAILABLE FINISHES:





SELECT COLLECTION

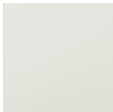
IMI Interval Contemporary Pattern

MasterCast™ Cast Marble Wall Surrounds - Contemporary Series

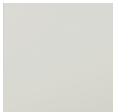
Discover our shower wall panels, customizable up to 36"W x 96"H for side walls and 62"W x 96"H for back walls, with a nominal 1/4" thickness and slight variance for a refined look. These durable panels resist mold, mildew, bacteria, heat, and scratches. Adhering to ANSI and ASTM standards, and MAS Certified Green, they offer both safety and sustainability.

- Optional Accessories: Soap dishes, Shampoo shelves, Footrests
- Additional accessories available upon request (minimum quantities apply)

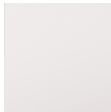
AVAILABLE FINISHES:



CREAM



IVORY



WARM WHITE



SELECT COLLECTION

IMI 3x12 Herringbone Pattern

MasterCast™ Cast Marble Wall Surrounds - Simulated Tile Series

Elevate your space with our customizable shower wall panels, offering up to 36" x 96" side walls and a 72" x 96" two-piece back wall with a stylish 6" listello accent. Designed with a nominal 1/4" thickness and 3" x 12" tiles for a handmade look, these panels are resistant to mold, mildew, bacteria, heat, and scratches. Fully compliant with ANSI and ASTM standards, and MAS Certified Green for eco-friendly durability.

- Available without the 28" back wall piece (which includes the 6" listello).
- Optional Accessories: Soap dishes, Shampoo shelves, Footrests
- Additional accessories available upon request (minimum quantities apply)

AVAILABLE FINISHES:





SELECT COLLECTION

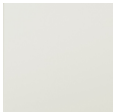
IMI Cultured Marble Shower Base

Trench Drain

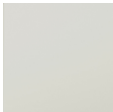
Discover our Trench/Linear Drain Shower Base, featuring a solid, one-piece construction that adheres to ANSI Standards, holds an ASTM Fire Rating, and boasts MAS Certified Green accreditation. This pre-leveled base sits directly on the subfloor, offering resistance against mold, mildew, and bacteria for a cleaner, safer bathroom environment.

- Stain resistant, waterproof, and leakproof
- Ability to move the drain location anywhere within the trench itself in order to accommodate a wide range of drain locations

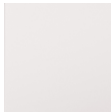
AVAILABLE FINISHES:



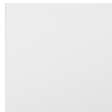
CREAM



IVORY



WARM WHITE



SOLID WHITE



SELECT COLLECTION

Dreamline French Linea

Shower Screen

Enhance your bathroom with our premium frameless walk-in shower screen, featuring an elegant doorless design for a seamless entry. Crafted from 3/8" (10mm) thick certified tempered glass, this shower screen offers an upscale appearance. It's further enhanced with DreamLine's exclusive ClearMax coating, providing superior water and stain resistance for effortless maintenance.

- JetGlaze glass pattern offers a unique mullion look without the metal framing
- U-channel allows up to 1/2" adjustment for out-of-plumb (uneven walls)

AVAILABLE FINISHES:



SATIN BLACK



SELECT COLLECTION

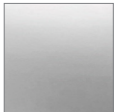
Dreamline Essence-H

Sliding/Bypass Door

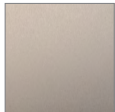
The DreamLine Essence frameless sliding bypass door showcases a modern, elegant design with a striking silhouette. The Essence provides smooth gliding action with its sleek rollers without the significant framing of a typical bypass shower door. Step into a stunning oasis every time you shower!

- Quality 5/16" (8 mm) thick certified tempered glass with DreamLine's exclusive ClearMax water and stain resistant glass coating
- Aluminum 3" wall profiles accommodate up to 1/4" for out-of-plumb (uneven) walls; SafeClose bumper guides within each wall profile

AVAILABLE FINISHES:



CHROME



BRUSHED
NICKEL



SELECT COLLECTION

IMI Compression Molded Solid Surface

ADA Front Trench Drain Shower Base

Our ADA Shower Solutions are designed to deliver a seamless, code-compliant experience for showers and bathing areas. With cutting-edge Solid Surface technology, a front trench base, and a barrier-free entrance, our ADA Trench drain base is the perfect addition to any shower space. This ADA-compliant base is expertly crafted to enhance accessibility without the need for slab recessing.

- Stylish patented wall-to-wall trench grate keeps the water in the shower
- Removable snap-in trench grate allows easy access to the drain for ease of cleaning

AVAILABLE FINISHES:



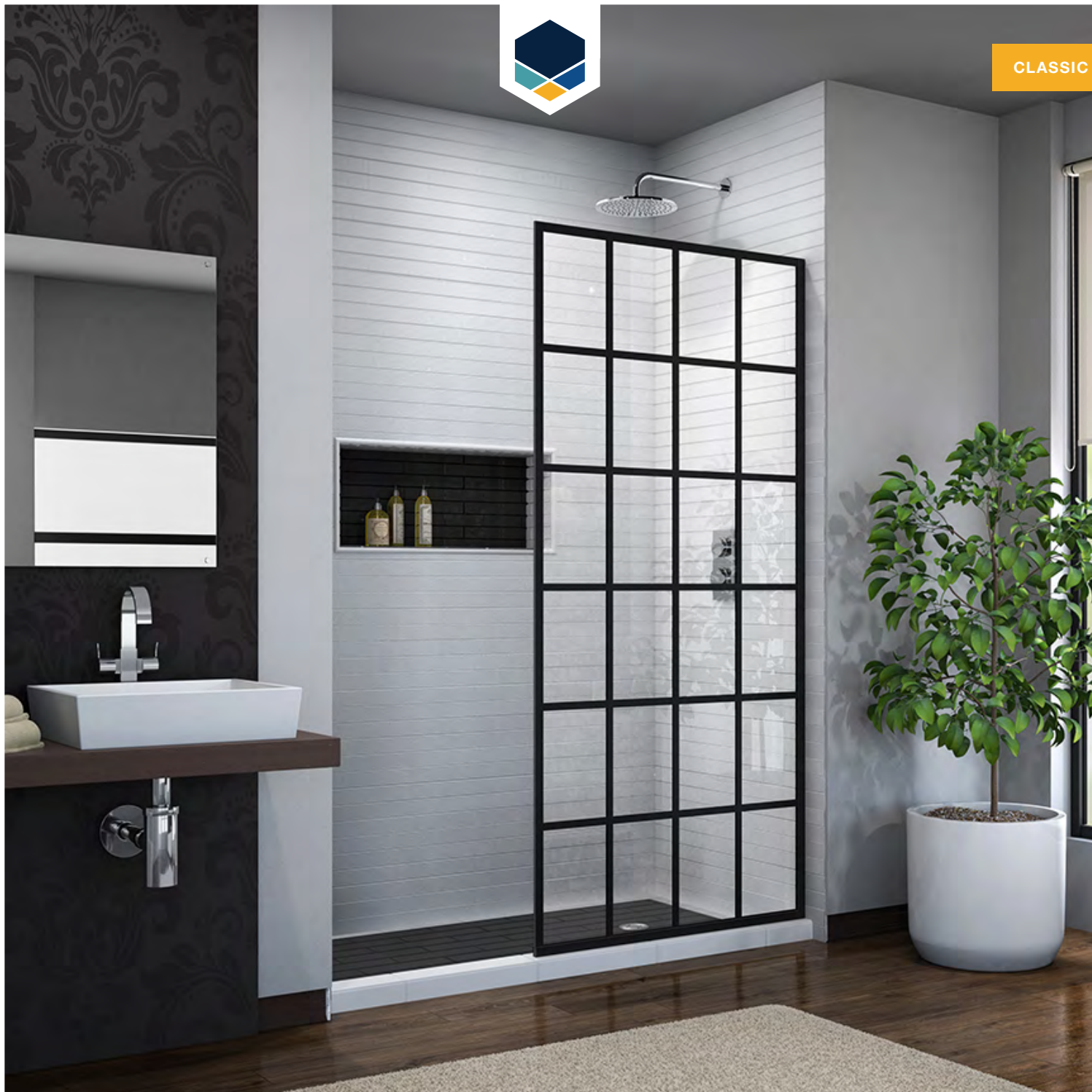
WHITE



CLASSIC COLLECTION



CLASSIC



CLASSIC COLLECTION

Aquatic 2603SG

One-Piece Tub Shower

Discover the 1-Piece Tub Shower, where classic elegance meets modern convenience. With its easy-to-maintain smooth finish and molded shelves, this design optimizes space and functionality. Enjoy bathing comfortably with an ergonomic backrest!

- Left or right hand drain
- Slip resistant, textured floor for safety
- AcrylX™ applied acrylic surface

AVAILABLE FINISHES:



WHITE



CLASSIC COLLECTION

Bootz

Porcelain Enameled Steel Bathtub

Porcelain enameled steel bathtubs and shower bases are a known and trusted brand standard in hospitality, and come standard with jobsite protective coating, known as ArmorShield™.

- Each of our porcelain enameled steel tubs and shower bases include a proprietary cast insulation on the bottom to deaden sounds and keep the water and space warm longer
- Porcelain enameled products offer a superior product at a fraction of the cost of cast iron, and are much lighter to install
- Porcelain enameled bathtubs are flame-proof, and fade-proof (color throughout).

AVAILABLE FINISHES:



WHITE





ABG HOSPITALITY

EXPERIENCE **BY DESIGN.**