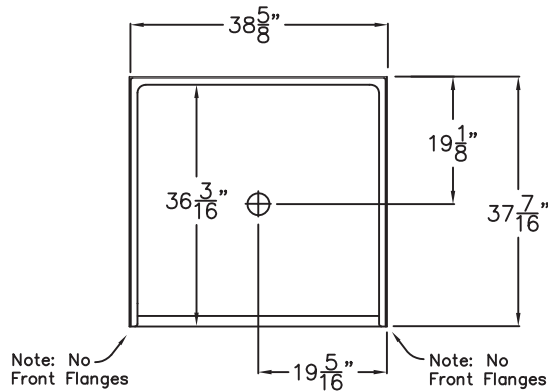


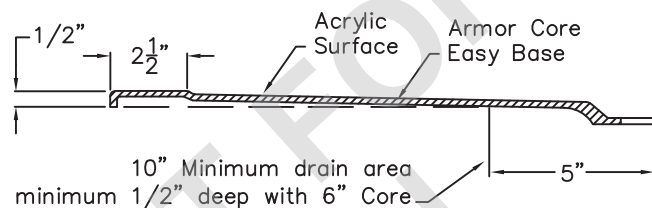
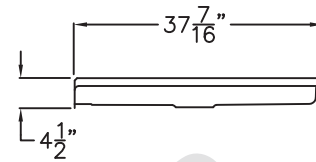
Comfort Series

SUBMITTAL DATA

TOP VIEW



SIDE VIEW



THRESHOLD DETAIL

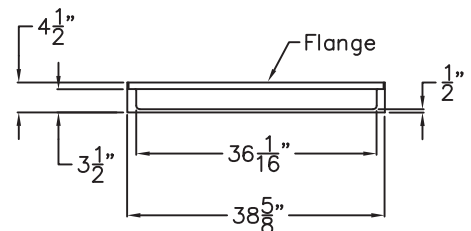
Barrier Free Shower Pan

The shower pan shall be Praxis model MPB 3838 BF .50 center drain. Finished surface shall be of an applied acrylic. The base shall be attached to the sump of the unit in such a manner to form an integral part with an inner and outer coating of polyester resin. The unit shall have outside dimensions of 38 5/8" x 37 7/16" x 4 1/2". The unit meets CSA B45.5, ANSI Z124.1.2, and complies with ADA, and ICC-ANSI A117.1 when configured with walls above that include code required accessories such as grab bars, valve with hand shower and seat. (Walls above by others).

This enclosure shall be equipped with the following installed accessories:

- 1) Low entry 1/2" threshold,
- 2) Slip resistant surface on floor,
- 3) Center drain location,
- 4) Factory installed Armor Core Easy Base.

FRONT VIEW



DUE TO THE NATURE OF THE MATERIALS INVOLVED
UNIT DIMENSIONS MAY VARY $\pm 1/2$ INCH

Job Name:	PRAXIS	
Approved By Print Name:	Drawing#: MPB 3838 BF .50 PAN Easy Base	
Approved By Signature:	Date:	Date: 3-31-09 Revised: 12-4-19
Rep.:	Wholesaler:	Quote No.

PRAXIS INDUSTRIES, INC.
ROUTE 1, BOX 46D - SAVANNAH, TN 38372
1 (800) 443-7269 - FAX (901) 925-4290