

G 6034TR L/R

ACRYLX™ TRENCH SHOWER BASE

Exterior Dimensions: 59 ½W x 33 ¾D x 4 H



COLOR OPTIONS

Standard
Biscuit
Bone
White

FEATURES

- AcrylX™ applied acrylic surface
- Low threshold entry
- Trench drain with white powder-coated cover
- Lifetime limited warranty*

OPTIONS

- Brushed stainless steel trench drain cover
- Polished stainless steel trench drain cover — available with upgrade charge

STANDARDS AND RATINGS

- ASTM E-84

CODE COMPLIANCE

- ANSI Z124.1.2
- HUD UM73a
- CAN/CSA-B651-12

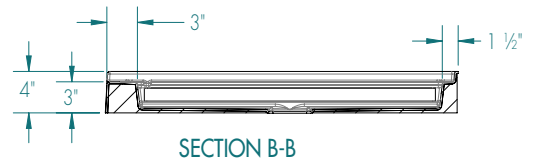
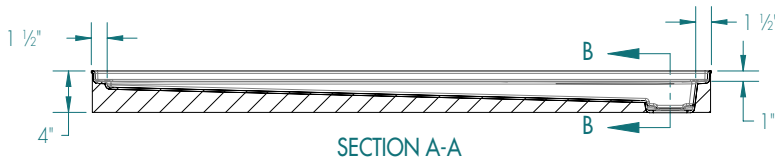
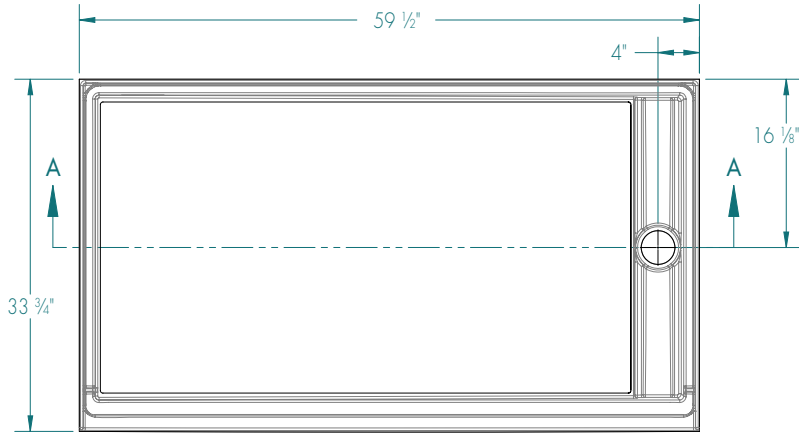
*See terms and conditions for details.





G 6034TR L/R

Exterior Dimensions: 59 1/2" W x 33 3/4" D x 4" H
inches



FEATURES Dimensional Tolerance $\pm \frac{3}{16}$ ". Dimensions needed for site preparation should be measured from the unit. Manufacturer assumes no responsibility for preparatory work.

Type and Model #	Material	Drain	Threshold Height	Pkg. Wt. lbs.
Shower Base #G 6034TR L/R	AcrylX™	Trench	3"	71

DIMENSIONS

Specifications	inches
Width: Overall / Net	59 1/2
Depth: Overall / Net	33 3/4
Height: Overall / Net	4
Enclosure Opening	56 7/8
Drain Rough-In (from Back Wall)	16 1/8
Drain Rough-In (from Side Wall)	4

FRAMING DIMENSIONS inches

Type	D Depth	W Width	A	B	C
Alcove	33 3/4	59 5/8	Boxout	4	16 1/8

