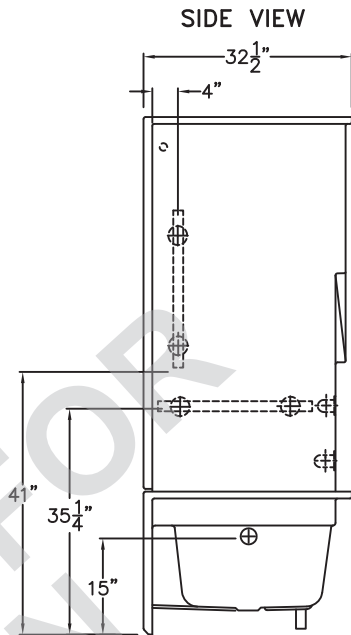
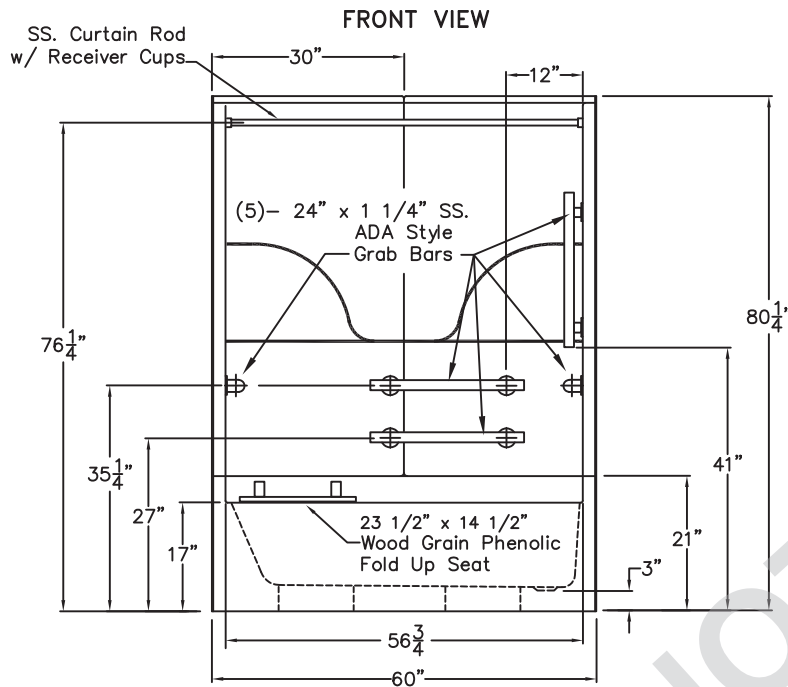


Special Needs Series

SUBMITTAL DATA



60" Barrier Free Sectional Tub/Shower

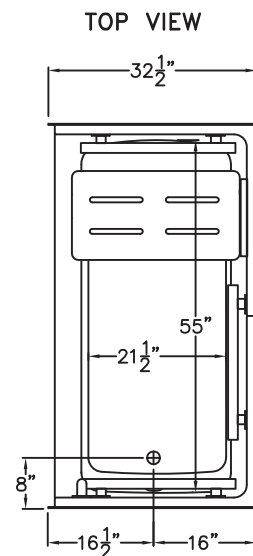
This tub shower enclosure shall be Aquarius model G 3260 TS 3P. Unit surface is sanitary grade applied acrylic. Unit shall have outside dimensions of 60" x 32 1/2" x 80 1/4". Unit complies with ANSI Z124.1.2, CSA B45.5, ADA, and ANSI A117.1.

The enclosure shall be equipped with the following factory installed accessories:

- 1) Two 24" x 1 1/4" diameter stainless steel ADA style horizontal grab bars on the back wall,
- 2) Two 24" x 1 1/4" diameter stainless steel ADA style horizontal grab bars, one on each side wall,
- 3) One 24" x 1 1/4" diameter stainless steel ADA style vertical grab bar on the valve wall, all with 1 1/2" statute clearance, secured with stainless steel bolts, and secured from the rear with 3" x 3" x 11 gauge metal mounting plates.
- 4) 23 1/2" x 14 1/2" woodgrain phenolic fold up seat,
- 5) One inch diameter, 18 gauge stainless steel curtain rod with receiver cups,
- 6) Three piece sectional design.

Available options: 7) Green anti-bacterial shower curtain and hooks, 8) White weighted shower curtain and hooks, 9) Valve package with hand shower, 10) Nurses call box drilling, 11) Recessed soap dish.

This unit features the outside dimensions of 60" of overall width. This does not allow for full enclosure of the bolts that are used to secure the bars and seat in place. This may require the need to notch studs to allow for bolt clearance for installation. For a dry wall enclosed fire wall installation, adjustment of the wallboard may be necessary to provide clearance of the bolts while maintaining the integrity of the drywall fire wall enclosure.



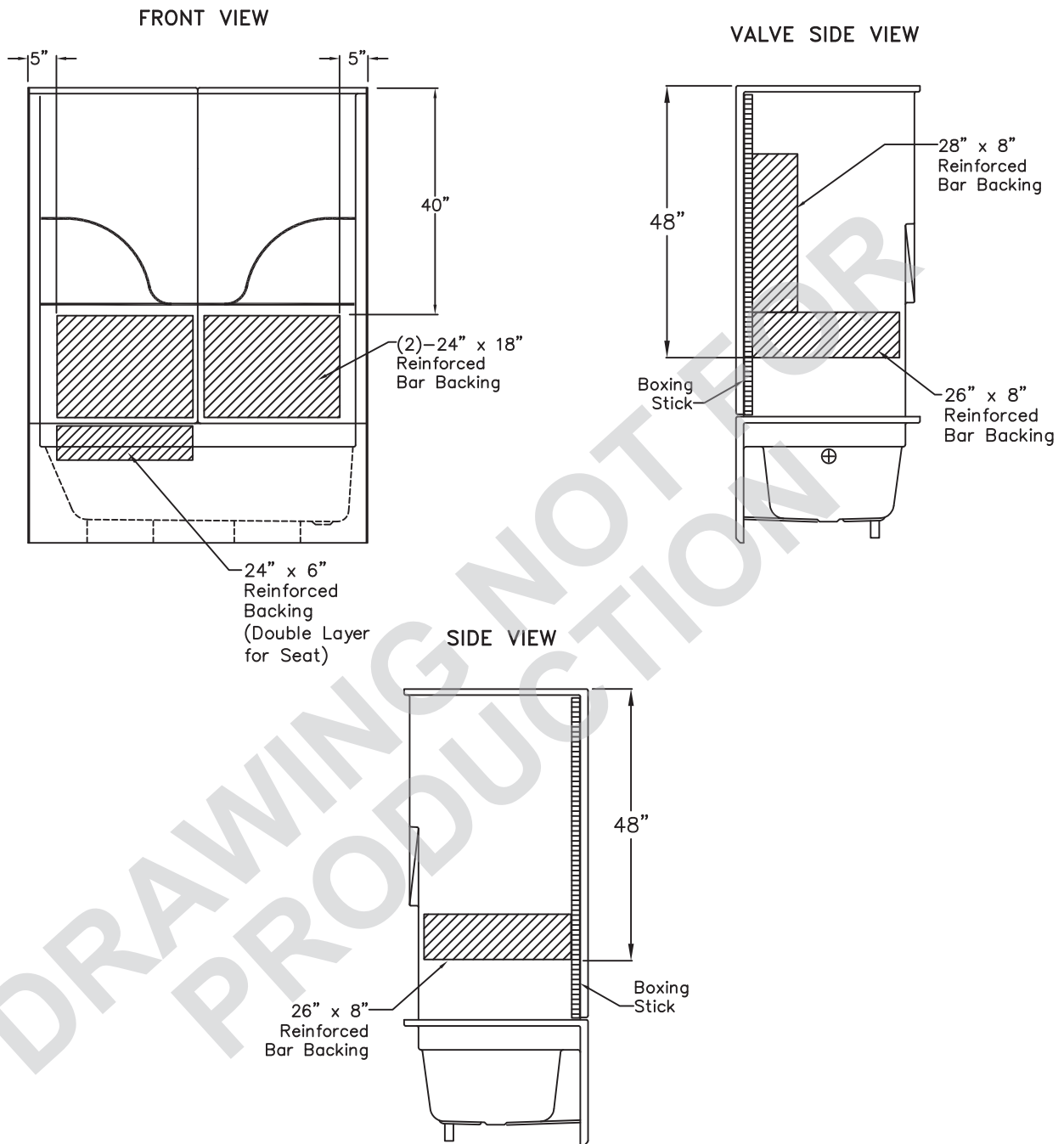
DUE TO THE NATURE OF THE MATERIALS
DIMENSIONS MAY VARY ± 1/2"

Job Name:	AQUARIUS		
Approved By Print Name:	Drawing#: G 3260 TS 3P Package One ADA		
Approved By Signature:	Date:	Date: 10-20-99	Revised: 10-8-19
Rep.:	Wholesaler:	Quote No.:	

PRAXIS INDUSTRIES, INC.
435 INDUSTRIAL RD - SAVANNAH, TN 38372
1 (800) 443-7269 - FAX (901) 925-4290

Backing Placement

SUBMITTAL DATA



DUE TO THE NATURE OF THE MATERIALS
DIMENSIONS MAY VARY $\pm 1/2"$

Job Name:	AQUARIUS	
Approved by Print Name:	Drawing#: G 3260 TS 3P Package One ADA-BP	
Approved by Signature:	Date:	Date: 6-14-07 Revised: 10-8-19
Rep.:	Wholesaler:	Quote No.:

PRAXIS INDUSTRIES, LLC.
435 INDUSTRIAL RD - SAVANNAH, TN 38372
1 (800) 443-7269 - FAX (731) 925-4290