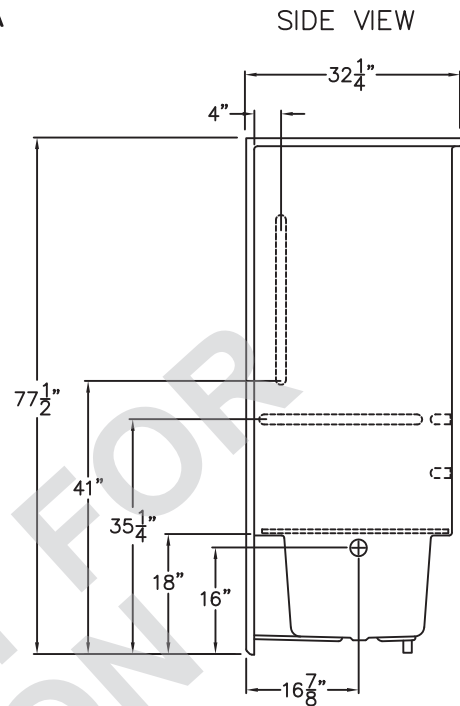
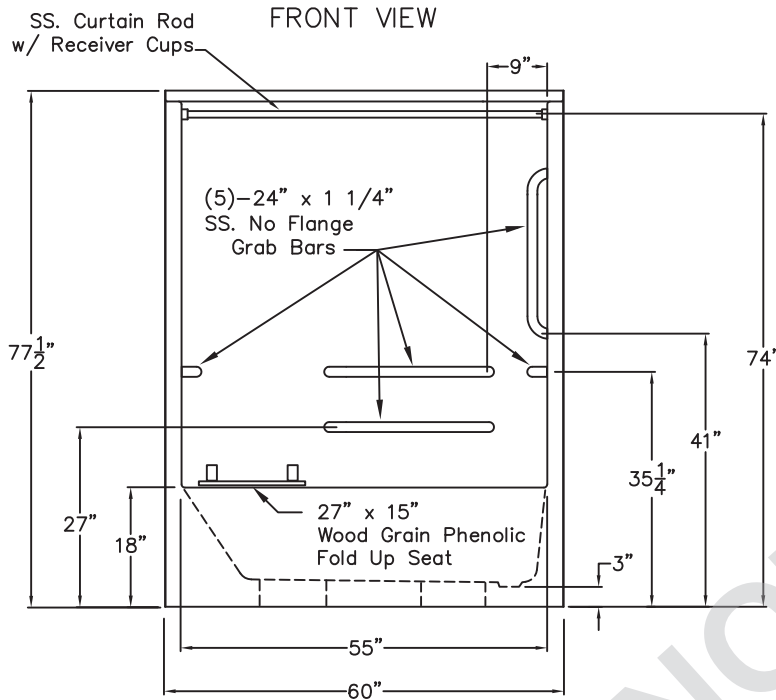


Special Needs Series

SUBMITTAL DATA



60" ADA Tub/Shower

This tub shower enclosure shall be Aquarius Model G 6092 TS Tile. Unit surface is sanitary grade applied acrylic. Unit shall have outside dimensions of 60" x 32 1/4" x 77 1/2". Unit complies with ANSI Z124.1.2, CSA B45.5, ADA, and ANSI A117.1.

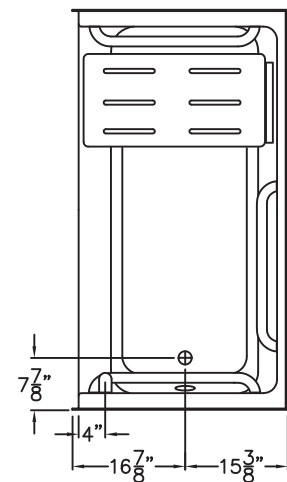
The enclosure shall be equipped with the following factory installed accessories:

- 1) Two 24" x 1 1/4" diameter stainless steel no flange grab bars on the back wall,
- 2) Two 24" x 1 1/4" diameter stainless steel no flange grab bars, one horizontal on each side walls,
- 3) One 24" x 1 1/2" diameter stainless steel no flange grab bar, vertical on the valve wall, all with 1 1/2" statute clearance, secured from the rear with stainless steel bolts, and 3" x 3" x 11 gauge metal mounting plates,
- 4) 27" x 15" wood grain phenolic fold up seat,
- 5) One inch diameter stainless steel curtain rod with receiver cups.

Available options: 6) Green anti-bacterial shower curtain and hooks, 7) White weighted shower curtain and hooks, 8) Valve package with hand shower, 9) Nurses call box drilling, 10) Recessed soap dish.

This unit features the outside dimensions of 60" of overall width. This does not allow for full enclosure of the bolts that are used to secure the bars and seat in place. This may require the need to notch studs to allow for bolt clearance for installation. For a dry wall enclosed fire wall installation, adjustment of the wallboard may be necessary to provide clearance of the bolts while maintaining the integrity of the drywall fire wall enclosure.

TOP VIEW



DUE TO THE NATURE OF THE MATERIALS INVOLVED, UNIT DIMENSIONS MAY VARY $\pm 1/2$ INCH.

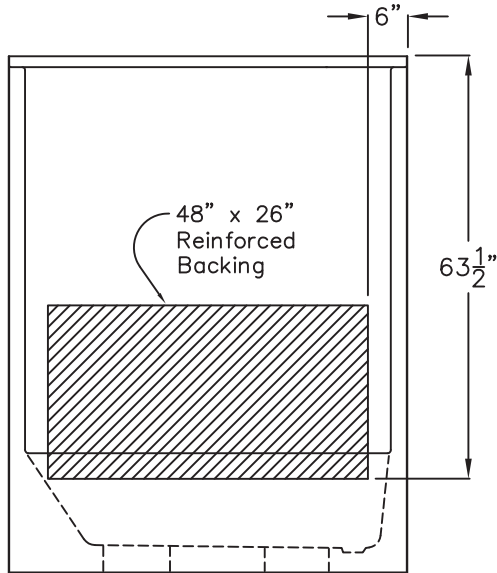
Job Name:		AQUARIUS	
Approved by Print Name:		Drawing#: G 6092 TS Package 1 ADA	
Approved by Signature:		Date: 7-17-96	Revised: 10-8-19
Rep.:		Quote No.:	

PRAXIS INDUSTRIES, LLC.
435 INDUSTRIAL RD - SAVANNAH, TN 38372
1 (800) 443-7269 - FAX (731) 925-4290

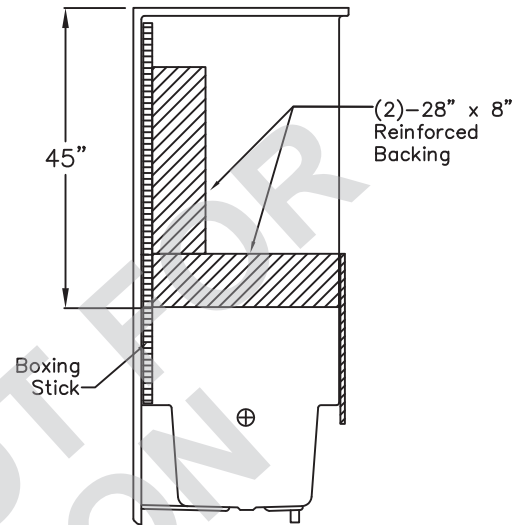
Special Needs Series

SUBMITTAL DATA

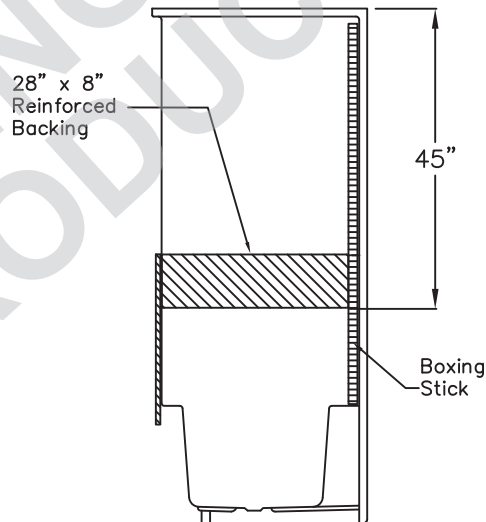
FRONT VIEW



VALVE SIDE VIEW



SIDE VIEW



DUE TO THE NATURE OF THE MATERIALS
DIMENSIONS MAY VARY $\pm 1/2"$

Job Name:

AQUARIUS

Approved by Print Name:

Drawing#: G 6092 TS Package 1 ADA-BP

Approved by Signature:

Date:

Date: 7-19-96

Revised: 10-8-19

Rep.:

Wholesaler:

Quote No.:

PRAXIS INDUSTRIES, LLC.
435 INDUSTRIAL RD - SAVANNAH, TN 38372
1 (800) 443-7269 - FAX (731) 925-4290