

AGING IN PLACE

WHEN LIFE CHANGES, SO CAN THE BATHROOM



AGING IN PLACE

ADDING COMFORT AND ACCESSIBILITY TO YOUR HOME

Clarion

EVERYDAY LUXURY



50 years of Clarion



Clarion

EVERYDAY LUXURY

AcrylX™	2
Clarion's Quick Ship Program	3
E-Z Pin	6
Accessories	8
Walk-In Bathtubs	10
AcrylX™ Sectional Showers	13
Color Options and Warranty	18

Clarion sells products through a vast network of wholesale distributors.

Please check for a wholesaler near you, using the **"Where To Buy"** feature on our website www.ClarionBathware.com.



ADA-COMPLIANT

Various Clarion AGING IN PLACE models are ADA-compliant, when properly accessorized. That means these select products fit within the regulations set forth by the American with Disabilities Act.

Better Starts Now!

Clarion Bathware products are now made with AcrylX™



AcrylX

EXCEPTIONAL STRENGTH

SUPERIOR FINISH

LIFETIME WARRANTY



Try *Clarion's* Quick Ship Program Today!

In Stock and Ready to ship in 24 Hours:

- Pickup
- LTL
- Clarion's Next Truck



Model No. AMPZ6032RBF-WH shown above.

CHOOSE FROM 4 DIFFERENT UNITS!

Clarion Bathware has accessorized showers in stock and are ready to be shipped! All four of our options are designed to add both comfort and accessibility to your home! All four showers are ready for pickup within 24 hours. Must be ordered as shown, no modifications.

Call **1 (800) 576-9228** now for more information.

**REPLACE YOUR TUB WITH AN
E-Z ACCESS SAFETY SHOWER BY CLARION!**



ADDING COMFORT AND
ACCESSIBILITY TO YOUR HOME





**A4MS11L-WH or
A4MS11R-WH**
60"W X 33"D X 76 1/4"H
60" 4-Piece Shower with 4" Threshold

- E-Z Pin System
- Molded soap ledges
- Dome available
- Left or right hand drain



**A4MS10LBF34T-WH or
A4MS10RBF34T-WH**
60"W X 33"D X 79 1/4"H
60" 4-Piece Barrier-Free Shower with 3/4" Threshold

- E-Z Pin System
- Molded soap ledges
- Acrylic towel bar
- Dome available
- Center drain



**AMPZ6032LBF-WH or
AMPZ6032RBF-WH**
59"W X 33"D X 77"H
60" 3-Piece Barrier-Free Shower with 2" Threshold

- Molded soap ledges
- Left or right hand drain



**A4MS40LT/S-WH or
A4MS40RT/S-WH**
60"W X 30"D X 74"H
60" 4-Piece Barrier-Free Shower with 4" Threshold

- E-Z Pin System
- Acrylic towel bar
- Molded soap ledges
- Molded seat (opposite of valve wall)
- Left or right hand drain

Clarion's Quick Ship Program

Call 1 (800) 576-9228 now to get your order on our next truck!

In Stock and Ready to ship in 24 Hours:



OPTIONAL ACCESSORIES:

SIMPLIFY YOUR INSTALLATION!

E-Z FLOOR TRIM



E-Z FLOOR TRIM:
 Makes for a Quick and E-Z ADA Compliant transition between your shower and bathroom floor!
 (Floor trim available in white only.)

(EZ-Floor Trim)

E-Z WALL TRIM



E-Z WALL TRIM:
 Install your shower over drywall and trim it out Quick and E-Z with our pre-mitered wall trim!

(TK or TK-EZ)

STANDARD ACCESSORIES:



GLIDE BAR HAND HELD SHOWER
 Adjustable hand held shower.

(HHS-30CE)



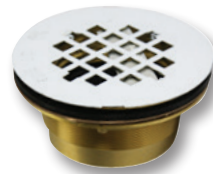
COLLAPSIBLE THRESHOLD
 • Available with end caps

(Seal - WH)



ZURN® PRESSURE BALANCING MIXING VALVE
 Guarantees safe distribution of hot water with temperature limit control.

(Valve - 7300)



BRASS SHOWER DRAIN
 • 2" brass no caulk drain.
 • Installs from the top with locknut underneath

(Drain - Brass)



BRUSHED STAINLESS STEEL SOAP DISH
 • Standard soap dish
 • Allows for installation from the front side of the unit
 • Shallow design accommodates firewall installation

(Soap Dish - Round)



J-BAR
 Flangeless Bar, available in 1 1/4" only, smooth white
Size: 26 3/4"



CORNER BAR
 Flanged Bar, available in stainless steel



FOLDING BARIATRIC SEAT

E-Z Pin Makes Installation EZ

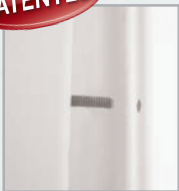


E-Z PIN

EASY TO INSTALL—NO NUTS OR BOLTS



PATENTED



E-Z PINS



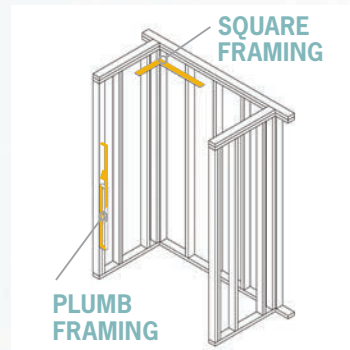
CORNER
(Front View)



CORNER
(Back View)

STEP 1

Frame a square and plumb pocket.

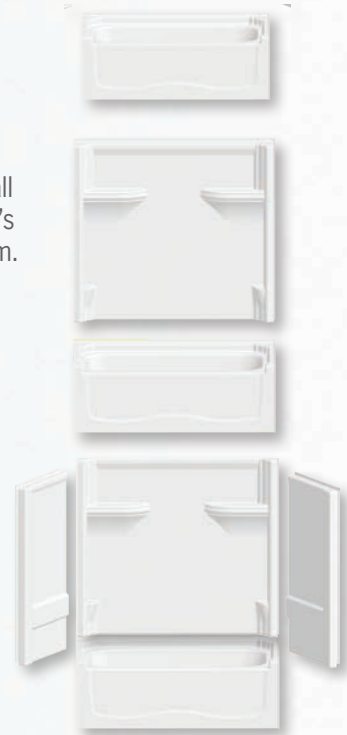


STEP 2

Set, level and secure the base.

STEP 3

Apply sealant and install back wall using Clarion's patented E-Z Pin system.



STEP 4

Apply sealant and install left and right walls using the E-Z Pin System.

With Clarion Bathware's patented E-Z Pin System, installing a shower or tub/shower has never been easier. No nuts or bolts are required during the installation, and all E-Z Pin units can be installed at any stage of the construction process.

The E-Z Pin System enables professionals and do-it-yourselfers to roughly fit the shower or bathtub into the framing pocket and easily remove it to make adjustments to the pocket or drain. The units can literally be installed in four E-Z steps.

*Optional on two- and three-piece sectionals. Standard on four-piece sectionals.

IT'S HERE!

Replace Your Old Tub Shower

With Our New Low Threshold 4 Piece Shower with Left or Right Hand Drain



- ✓ Low 1 1/4" Threshold
- ✓ Left or right hand drain
- ✓ Installs quickly with our E-Z Pin technology
- ✓ Improved accessibility



New Accessible Threshold!
 • Now with a low 1 1/4" threshold

Call us about one today!

Install With
EZ
 PIN®

4MS11LBF54 or 4MS11RBF54

60"W X 33"D X 77"H

60" 4-Piece Shower with 1 1/4" Threshold

- E-Z Pin System
- Integral 1" (25 mm) floor nailing flange
- Molded soap ledges
- Molded shelving
- Dome available (4D1)
- Left or right hand drain
- Available with 4" threshold (4MS11L or R)
- Available with 4" threshold and molded seat (4MS11L/S or R/S - See page 9)

SEATS

NEW INNOVATIVE DESIGN!

Bariatric rated and safer than our competitor's seat.



White powder-coated

FOLDING BARIATRIC SEAT

ADA-compliant. Improved accessibility. Solid four legged bariatric style folding seat frame. Available in stainless steel or by special order white powder-coated frame. Enlarged rectangle water-resistant seat pad. Improved weight distribution/support. Supports up to 400 lbs. Available as 22". Adjustable leg height: 26 1/2", 29", 32" or 33 1/2" lengths.



Stainless Steel



NON-SLIP SHOWER CHAIR

This ADA-compliant shower seat offers a true sense of security.

- Adjustable seat height of 15" to 20".
- Supports up to 400 lbs.
- Non-slip seat surface 19" W x 17.7" D



Open

FOLDING PHENOLIC TUB/SHOWER SEAT WITH HEAD REST

Only available for 6032 tub/shower series. Folds against sidewall.



Closed



FOLDING PHENOLIC TUB/SHOWER SEAT

- Available for certain units.
- Folds against back wall



REMOVABLE PHENOLIC TUB/SHOWER SEAT

- Available for certain units
- Available in white
- Can easily be removed and attached

TRUSTED SOLUTIONS



Closed

STANDARD 4 LEGGED NAUGAHYDE FOLDING SHOWER SEAT

- Frame available in stainless steel and white
- Seat folds up for improved accessibility
- Improved weight distribution/support allows seat to support up to 400lbs
- Available colors: Stainless steel or by special order powder coated white
- Available as 22", 26 1/2", 29", 32" or 33 1/2" lengths



ZURN® PRESSURE BALANCING MIXING VALVE

Automatically adjusts to equalize the hot and cold water pressure.



GLIDE RAIL HAND HELD SHOWER

Adjustable hand held shower.

GRAB BAR SHOWER & GLIDE BAR

Adjustable hand held shower.



Accessorize it today!

CURTAINS



PREMIUM WEIGHTED CURTAIN
 Heavy duty, weighted, vinyl shower curtain. 40% thicker than standard shower curtain and mildew-resistant. Stainless steel hooks included.
Sizes: 48" x 72" & 72" x 72"

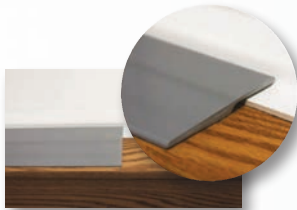
GROMMET FLANGE

- Increased durability
- Fits standard shower curtain
- Size available: 1"
- Colors: white & bone



CURTAIN ROD WITH FLANGES
Sizes: 29" to 59 1/4"

TRIM OPTIONS



E-Z FLOOR TRIM
 • Available for 3/4" shower units
 • Available in White Only
 • 75" Length

E-Z WALL TRIM

Clarion's E-Z Wall Trim is a composite material that is impervious to water, can be attached with silicone caulking, finish nails or screws. Available in white. Easy to install. Pre-mitered. Available for any unit.



TRIM KIT
 (TK or TKL) two front pieces, two side pieces and one back piece un-trimmed.

E-Z TRIM KIT
 (TKEZ or TKEZL) two front pieces, two side pieces with a 45° angle precut, one back piece un-trimmed.



CUSTOM TRIMMED TK (Model#) Custom fit trimmed to your shower and tub shower unit.

REMOVABLE/THRESHOLDS

Water Dams



COLLAPSIBLE THRESHOLD
 Available with end caps. SEAL-WH



ACRYLIC THRESHOLD
 Removable acrylic threshold. Available colors: White
Size: 2" x 2"



REMOVABLE ACRYLX™ THRESHOLD
 Available for specific units only. Available colors: White

SOAP DISH



COMPOSITE SOAP DISH
 • Composite Surface Mount Soap Dish
 • Can be installed at anytime
 • Available in std. white, biscuit & bone.
 • All other colors require extended lead time.
 • Soapdish-F7

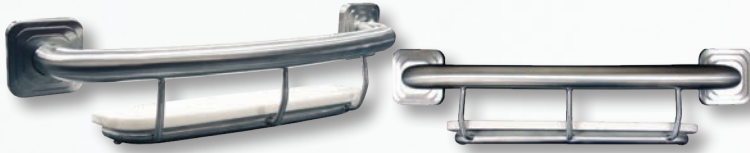


BRUSHED STAINLESS STEEL SOAP DISH
 • Brushed Stainless Steel Soap Dish
 • Allows for installation from the front side of the unit
 • Standard soap dish
 • Soapdish-Round



POLISHED STAINLESS STEEL SOAP DISH
 • Removable acrylic tray
 • Polished stainless steel
 • Soapdish-CMP

NEW BARS



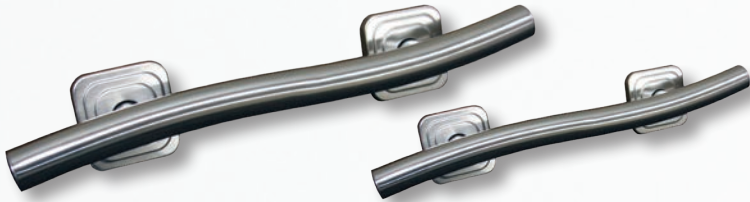
SHELF GRAB BAR

This multi-purpose bar offers additional safety, stability, convenience and organization to your tub/shower. The grab bar supports up to 250 lbs, and the built in shelf can easily hold multiple bottles of your favorite shampoo. **Size:** 18"



SHOWER VALVE SAFETY BAR

Enjoy the look of this beautiful safety bar placed around the mixing valve of your shower or tub/shower. Available in stainless steel, brushed nickel and chrome.



WAVE BAR

Shower in style with the new wave bar. This grab bar will add a modern twist to your shower or tub/shower. Available in stainless steel, brushed nickel and chrome. **Sizes:** 18" or 24"



PSYCHIATRIC BAR

- Clarion designed psychiatric bar
- ADA compliant
- Available by special order

Call today for availability 1 (800) 576-9228!

SHOWER BARS



ERGO BARS

High quality grab bars. Compliant to the 250 lbs shear test in accordance with ASTM:F446-85-85 and CSA B45 0-02. **Sizes:** 6" or 11".



ANGLE BAR

Flanged Bar, available in left or right, Stainless steel. **Size:** 12" x 24"



STRAIGHT BAR

Flanged Bar, available in 1 1/2", 1 1/4" only, smooth stainless steel, stainless steel textured, smooth white, white textured. **Sizes:** 12", 14", 16", 18", 20", 24", 36", 40", 42", 48"

CORNER BAR

Flanged Bar, available in smooth stainless steel, stainless steel textured, smooth white, white textured. **Sizes:** 32" x 18" 42" x 20"
25" x 28" 44" x 26"



FLANGELESS BAR

Flangeless Bar, available in 1 1/4" only, smooth stainless steel, smooth white, white textured. **Sizes:** 12", 18", 24"



U BAR

Flanged Bar, available in smooth stainless steel, stainless steel textured, smooth white, white textured. Designed for specific units. **Sizes:** 20" x 57" x 20"
26" x 60" x 26"
28" x 57 1/4" x 28"
28" x 60" x 28"



J-BAR

Flangeless Bar, available in 1 1/4" only, smooth white, white textured. **Size:** 26 3/4"

NEW WALK-IN HYDROTHERAPY/SOAKER BATHTUBS**WALK-IN TUB****Soaker Bathtub**

WT5029LSH/RSH

DIMENSIONS: 49 ½"W X 29"D X 41"H

- Easy entry
- Heated seat / backrest
- Left or right hand drain

Hydrotherapy Bathtub

WT5029LH/RH:001

DIMENSIONS: 49 ½"W X 29"D X 41"H

- Easy entry
- Heated seat / backrest
- Left or right hand drain
- 17 air jet hydrotherapy system

Standard Accessories for both Soaker and Hydrotherapy Bathtubs

- Hand held shower
- Faucet
- Bathtub spout / diverter
- Overflow and cable drain assembly
- 1 removable access panel

New Standard Features:

- Larger door for easy entry and exit
- Heated backrest and seat for comfort while filling and draining
- 120V/15A (draws 0.2A)
- Reinforced and slip resistant floor
- Walk-in style bathtub with easy entry door
- Left or right hand seat
- Factory installed overflow and cable drain assembly

Optional features:

- Available with Hydrotherapy Air Jet System (WT5029LH or WT5029RH)

WALK-IN TUB

INTRODUCING THE **NEW PRINCESS III SERIES**

Clarion Bathware's Walk-In Tubs have a low, safe step and easy to use door which provide a safe, independent and soothing bathing experience. Twice the depth of normal tubs, a comfortable contoured seat and a slip resistant floor. Therapeutic jetted tubs are available.

All accessories are pre-plumbed with some assembly required upon installation.

NOW WITH MORE LEG ROOM

The increase in door size, this unit is now even more spacious than ever.

17 AIR JET SYSTEM

With the the option of having 17 air jets added you can now surround yourself with heated bubbles for an even more relaxing experience.



NEW ENLARGED DOOR

With the newly enlarged door size this unit now offers easier entry and exit.

NEW HEATED SEAT / BACKREST

Heated seat for comfort while filling and draining! Enjoy the everyday luxury of a heated seat that now comes standard with all Princess Series Walk-in Tubs.

WHEN LIFE CHANGES, SO CAN THE BATHROOM



Standard Colors: White.
Premium Colors Available.

AGING IN PLACE

Beautiful, safe and barrier-free. That's the everyday luxury of Clarion Bathware.

These sectional showers and tub/showers offer peace of mind in more than 60 different AcrylX™ models. You can reduce the worry of falls even more by customizing with secured grab bars and slip-resistant floors.

TRUSTED SOLUTIONS



STANDARD 4 LEGGED FOLDING SHOWER SEAT
Frame available in stainless steel and white. Seat folds up for easy access.



ZURN® PRESSURE BALANCING MIXING VALVE
Automatically adjusts to equalize the hot and cold water pressure.



GLIDE RAIL HAND HELD SHOWER
Adjustable hand held shower.



MP8848L/S or MP8848R/S
60"W X 48"D X 78"H
 60" Tiled Shower with 7" Threshold

- Molded soap ledges
- Molded seat (opposite of valve wall: 16"W x 29 1/2" D x 23"H)
- Molded foot rest
- Center drain
- Slip resistant floor



4MS10LT or 4MS10RT
60"W X 33"D X 77"H
 60" 4-Piece Shower with 7" Threshold

- E-Z Pin System
- Molded soap ledges
- Acrylic towel bar
- Available with molded seat (opposite of valve wall) (4MS10LT/S or 4MS10RT/S)
- Dome available 4D1
- Left or right hand drain
- Slip resistant floor



4MS10LBF34T or 4MS10RBF34T
60"W X 33"D X 79 1/4"H
 60" 4-Piece Barrier-Free Shower with 3/4" Threshold

- E-Z Pin System
- Molded soap ledges
- Acrylic towel bar
- Dome available 4D1
- Center drain
- Slip resistant floor



4MS11L/S or 4MS11R/S
60"W X 33"D X 76 1/4"H
 60" 4-Piece Shower with 4" Threshold

- E-Z Pin System
- Molded soap ledges
- Molded seat (opposite of valve wall: 12 1/2"W x 18"D x 16"H)
- Available without molded seat (4MS11L or 4MS11R)
- Dome available 4D1
- Left or right hand drain
- Slip resistant floor

- AcrylX™ • Residential Lifetime Warranty • Accessories are optional
- 30 Year Commercial Warranty • Slip resistant floor
- Certified to meet CSA B45.5/IAPMO Z124 standard
- Complies with ADAAG and ICC A117.1-2017 when properly accessorized

STANDARD FEATURES



AGING IN PLACE – SECTIONAL – ACRYLX™



4MT10LT or 4MT10RT

60"W X 33"D X 75"H

60" 4-Piece Tub/Shower with 18" Apron

- E-Z Pin System
- Molded soap ledges
- Acrylic towel bar
- Dome available 4D1
- Left or right hand drain
- Slip resistant floor



4MT11L or 4MT11R

60"W X 33"D X 75"H

60" ADA-Compliant 4-Piece Tub/Shower with Flat Back Wall and 18" Apron

- E-Z Pin System
- Molded soap ledges
- Dome available 4D1
- Left or right hand drain
- Slip resistant floor



MP6032LBF or MP6032RBF

59 ¾"W X 33"D X 77 ½"H

60" 3-Piece Barrier-Free Shower with 2" Threshold

- Molded soap ledges
- Available with E-Z Pin System (MPZ6032RBF or MPZ6032LBF)
- Left or right hand drain
- Slip resistant floor



MP6032LSDX or MP6032RSDX

59 ¾"W X 33"D X 80 ¾"H

60" 3-Piece shower with 7" Threshold

- Molded soap ledges
- Available with E-Z Pin System (MPZ6032RSDX or MPZ6032LSDX)
- Above the floor rough
- Left or right hand drain
- Slip resistant floor



4MS40LT or 4MS40RT

60"W X 30"D X 74"H

60" 4-Piece Shower with 4" Threshold

- E-Z Pin System
- Molded soap ledges
- Acrylic towel bar
- Available with molded seat (4MS40LT/S or 4MS40RT/S)
- Left or right hand drain
- Slip resistant floor



MP6032LX/S or MP6032RX/S

59 3/4"W X 33"D X 80 3/4"H

60" 3-Piece Shower with 7" Threshold

- Molded soap ledges
- Molded seat (opposite of valve wall: 17"W x 20"D x 18"H)
- Available with E-Z Pin System (MPZ6032LX/S or MPZ6032RX/S)
- Above the floor rough
- Left or right hand drain
- Slip resistant floor



4MS40LT/S or 4MS40RT/S

60"W X 30"D X 74"H

60" 4-Piece Shower with 4" Threshold

- E-Z Pin System
- Molded soap ledges
- Molded seat (opposite of valve wall: 12"W x 16"D x 15"H)
- Acrylic towel bar
- Available without molded seat (4MS40LT or 4MS40RT)
- Left or right hand drain
- Slip resistant floor



4MT40LT or 4MT40RT

60"W X 30"D X 75"H

60" 4-Piece Tub/Shower with 18" Apron

- E-Z Pin System
- Molded soap ledges
- Acrylic towel bar
- Left or right hand drain
- Slip resistant floor

- AcrylX™ • Residential Lifetime Warranty • Accessories are optional
- 30 Year Commercial Warranty • Slip resistant floor
- Certified to meet CSA B45.5/IAPMO Z124 standard
- Complies with ADAAG and ICC A117.1-2017 when properly accessorized

STANDARD FEATURES



MP4836BKD34
48"W X 36"D X 78"H

48" 3-Piece Barrier-Free Shower with ¾" Threshold

- Available with E-Z Pin (MPZ4836BKD34)
- Rear center drain
- Slip resistant floor



MP9954X
54"W X 28"D X 75 ½"H

54" 3-Piece Shower with 8 ½" Threshold

- Molded soap ledges
- Available with E-Z Pin System (MPZ9954X)
- Above the floor rough
- Rear center drain
- Slip resistant floor



4MS30L/S or 4MS30R/S
48"W X 36"D X 77"H

48" 4-Piece Shower with 7" Threshold

- E-Z Pin System
- Molded soap ledges
- Molded seat (opposite of valve wall: 13 ½"W x 23"D x 16"H)
- Available without molded seat (4MS30LC or 4MS30RC)
- Center drain
- Slip resistant floor



4MS20LC or 4MS20RC
36"W X 36"D X 77"H

36" 4-Piece Shower with 4" Threshold

- E-Z Pin System
- Molded soap ledges
- Center drain
- Slip resistant floor



MP5848X
48"W X 36"D X 78"H

48" Shower with 8 ½" Threshold

- Molded soap ledges
- Two molded seats (7"W x 16"D x 18"H)
- Above the floor rough
- Available dome model RE948
- Center drain
- Slip resistant floor



MP9636
36"W X 35"D X 77 ¼"H

36" 3-Piece Shower with 7" Threshold

- Molded soap ledges
- Available dome model RE936
- Available with E-Z Pin System (MPZ9636)
- Center drain
- Slip resistant floor

DOMES



You can add a dome to many of our showers or tub/showers. Shower stalls that are dome compatible will have a bullet under the product number that says "dome available".

OUR WARRANTY



The bathroom has to be as tough as it is beautiful. Durable and resistant to stain or mildew. That's Clarion Bathware.

Our hard, non-porous surfaces hold up to real life. Our colorfast products wipe to a shine without scrubbing so they're easy to maintain.

LIFETIME WARRANTY

Clarion Bathware's Residential Lifetime Warranty covers all AcrylX™ products against defects in material and workmanship.

30 YEAR COMMERCIAL WARRANTY

Clarion Bathware's Commercial Lifetime Warranty covers all AcrylX™ products against defects in material and workmanship.

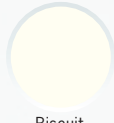
COLORS

STANDARD ACRYLX™ COLORS

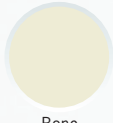


White

STOCK ACRYLX™ COLORS



Biscuit



Bone

CUSTOM COLORS

Clarion Bathware takes great pride in the ability to match colors. Our friendly and knowledgeable sales staff will happily assist you in the creation of your perfect color. Custom colors may require additional lead times.

PREMIUM COLORS

**Please note that the colors shown are an approximation. Actual colors may vary slightly from what is displayed.*



Platinum Gray



Innocent Blush



Cameo Rose



Peach Blossom



Tender Gray



Dusty Rose



Dresden Blue



Heron Blue



Zinfandel



Skylight Blue



Desert Bloom



Fawn Beige



Peach Bisque



Seafoam Green



Shell



Island Sea



Daydream Blue



Sterling Sliver

WHERE TO BUY

Clarion Bathware products are available through our vast network of wholesalers. You will find many of our products in stock and custom orders can be done directly with the wholesaler. Please contact your nearest wholesaler for price and availability.

FACTORY DIRECT SHIPPING

Clarion Bathware ships direct from our manufacturing facility in Marble, Pa., on our own fleet of air-ride trailers. Our company drivers guarantee on-time delivery and safe handling of our made-to-order bathware products.



To locate a wholesaler near you please go to www.ClarionBathware.com and click "Where to Buy".

Clarion

EVERYDAY LUXURY

44 Amsler Avenue
Shippenville, PA 16254

TEL: 1 800 576-9228
EMAIL: customercare@clarionbathware.com

www.ClarionBathware.com

