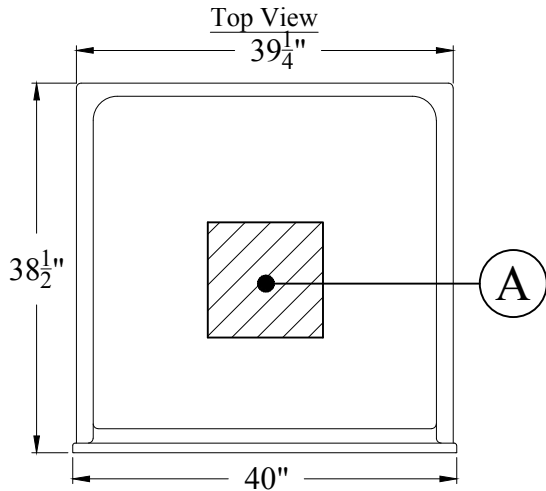
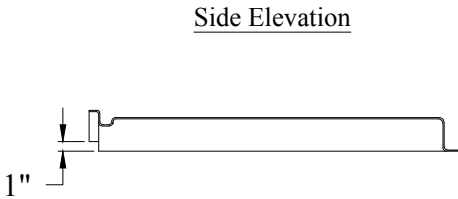
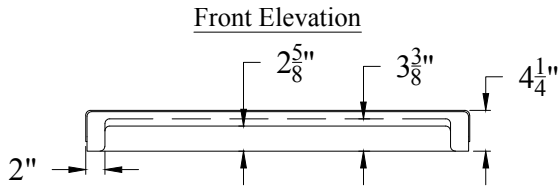


BILL OF MATERIALS			
MK	QTY	DESCRIPTION	DIMENSIONS
A	1	PLASTIC HONEYCOMB	12" x 12"



\*\*\* IMPORTANT NOTICE \*\*\*  
Clarion Bathware reserves the right to change the design and/or dimensions of its products at any time. This drawing may have been updated since this publication was issued. Before placing an order for any product, refer to our website at [www.clarionbathware.com](http://www.clarionbathware.com) to obtain the most current drawings for any products that you wish to purchase. Compare the date of revision of the drawing that you have with the one on the drawing on our website. If you do not have internet access, please call your sales representative or Clarion Bathware's sales department at 1-800-576-9228.

Product Specification Drawing DOME	
<div>Clarion BATHWARE 44 Amsler Ave. Shippenville, PA 16254</div> <div>Phone: (814) 226-5374 Toll Free: (800) 576-9228 Fax: (814) 226-0730 <a href="http://www.clarionbathware.com">www.clarionbathware.com</a></div>	
Dwg. By. NMH	Date. 3/23/2017
Dwg. #IN39-SPEC	Rev. #