

TUB & SOAKERS



**TUB &
SOAKERS**

Clarion



EVERYDAY LUXURY



Clarion

EVERYDAY LUXURY

AcrylX™	2
About Bubble Jet Systems	4
About Whirlpool Systems	5
Freestanding Tubs	6
Tub & Soakers	8
Acrylic Tub & Soakers	9
AcrylX™ Tub & Soakers	12
AcrylX™ SMIN Tub & Soakers	17
Advanced Options	18
Accessories	19
Color Options	21
Warranty	22

Clarion sells products through a vast network of wholesale distributors.

Please check for a wholesaler near you, using the **“Where To Buy”** feature on our website www.ClarionBathware.com.



Better Starts Now!

Clarion Bathware products are now made with AcrylX™



AcrylX

with the strength of

ARMORCORE™

EXCEPTIONAL STRENGTH
SUPERIOR FINISH
LIFETIME WARRANTY

EXCEPTIONAL STRENGTH

The Strength of **ARMORCORE™**

- AcrylX™ with the strength of ArmorCore™ eliminates the hassle of damages that occur during handling and transportation that cost time and money.
- We've eliminated the common issues associated with traditional base construction. No more expensive repairs!
- ArmorCore™ has been tested far beyond industry standards. Even at 1,800 lbs of pressure it refuses to fail.

SUPERIOR FINISH

- AcrylX™ has a visibly true white, deep lustrous finish that can only be achieved with an acrylic surface. We've upgraded the value of the everyday product.
- Whether in a warehouse or a new house an AcrylX™ product will resist scratching, cracking and chipping and will maintain a "factory-new" finish over its lifetime.
- AcrylX's™ UV properties resist fading, low porosity helps maintain luster and makes cleaning easier, and other natural properties make it less susceptible to chemicals. All enhancing value and reducing everyday issues.

SIMPLY EASY

- No more wasted time looking for the design and configuration customer needs. We have hundreds of models to choose from. Our entire everyday offering is now available to you in AcrylX™ with the strength of ArmorCore™.
- You can be confident that we will stand behind our products 100% of the time, so you can be confident in selling our products to your customers. We've backed AcrylX™ with the Strength of ArmorCore™ with an unprecedented Lifetime Warranty.
- Our new AcrylX™ with the Strength of ArmorCore™ increases the value of our everyday product without changing model numbers, specifications, SKUs, or price!



AcrylX™ with the strength of **ARMORCORE™**
AcrylX™ with ArmorCore™, shown above at left, compared to standard gelcoat unit, at right.

AcrylX™, Applied Acrylic offers a high gloss, truer white finish. The finish material is less porous which creates an easier to clean surface. The high luster results in a longer lasting finish, meaning a factory new look years after installation.

The structural integrity is greater than previous products; reducing the chances of surface cracks during transportation and installation.

ARMORCORE™

ArmorCore™ RRP (Resin Reinforced Product) offers unprecedented structural strength in everyday bath products. Testing demonstrates a 600% above code weight rating on the base while only increasing the unit weight by an average of 1-3%.

ArmorCore™ RRP outperforms traditional FRP due to the integral nature of its chemically bonded resin structure. ArmorCore™ RRP does not require foundation or bedding material for installation.

ArmorCore™ RRP produces the strongest, most resilient product in the industry, impervious to moisture and freezing, and better suited to the rigors of construction than any other product.

BETTER STARTS NOW



Available exclusively from
The American Bath Group family of Divisions



To view engineering details, please visit our website at www.ClarionBathware.com.

THE ULTIMATE MASSAGE

BACK MASSAGE JETS

Relief for upper and lower back. Available in White, Bone, Biscuit, Sterling Silver, Chrome, Brass, Brushed Nickel and Black.

LOWER BODY MASSAGE

Adjustable jets for hips, knees, calves and feet offer maximum relief.

NECK JETS

Two neck jets and soft molded head rest for maximum comfort. Molded head rest is available in White or Black. Controller included.



AVAILABLE ACCESSORIES

See more optional accessories on page 28.



2" SPA MOOD LIGHTS

Energy efficient, long life LEDs. Cycles through the following colors: Clear, Pink, Red, Light Green, Dark Green, Lavender, Light Blue, Dark Blue. (120V/1Amp/20Amp GFI).



12 STRING LED SURROUND LIGHTS

12 Energy efficient, long life LEDs. Available 1/2" only. Cycles through the following colors: Clear, Pink, Red, Light Green, Dark Green, Lavender, Light Blue, Dark Blue. (120V/1Amp/20Amp GFI).



REMOVABLE MAGNETIC HEAD PILLOWS

Our removable magnetic head pillows are molded for maximum comfort. Easily removed for cleaning. Available in White or Black.

Standard Color: White.
Premium Colors Available. See page 21.

WHIRLPOOLS

We put the “mmmm” in massage. With just the right number of water jets in all the right places. That’s soothing relief from Clarion Bathware.

Our acrylic and AcrylX™ models are built for years of enjoyment with 3/4 HP rated motors and factory installed air control, suction outlet and on/off switch. Enhance your experience even more with mood lights, aromatherapy, heater or other options.



BUBBLE JET MASSAGE SYSTEM
 16 multi hole bubble jets around the perimeter of the tub. Thousands of tiny air bubbles surround and stimulate the body.

MANIFOLD

ENGINEERING

BLOWER
 120v-15amp blower with auto dry that automatically starts 20 minutes after system shuts off.

FLEXIBLE TUBING
 Tubing directs air equally to all bubble jets placed around the tub.

CONTROLS

DIGITAL KEYPAD
 Exclusive Slimfit LCD display with a watertight plastic membrane.

To view engineering details, please visit our website at www.ClarionBathware.com.

AVAILABLE ACCESSORIES See more optional accessories on page 28.



REMOVABLE MAGNETIC HEAD PILLOWS
 Our removable magnetic head pillows are molded for maximum comfort. Easily removed for cleaning. Available in White or Black.



2" SPA MOOD LIGHTS
 Energy efficient, long life LEDs. Cycles through the following colors: Clear, Pink, Red, Light Green, Dark Green, Lavender, Light Blue, Dark Blue. (120V/1Amp/20Amp GFI).



ERGO BARS
 High quality grab bars. Sizes available 6" or 11". Compliant to the 250 lbs shear test in accordance with ASTM:F446-85 and CSA B45 0-02.

Standard Color: White.
 Premium Colors Available. See page 21.

BUBBLE JETS

You've never experienced a rush like this. Enjoy a fingertip massage from thousands of bubbles flowing to the surface of your tub. A new level of everyday luxury from Clarion Bathware.

Our tubs feature 16 air jets that surround you with relaxing bubbles. To ensure long-lasting performance, each air jet has an individual check valve to ensure that water never gets into the airline.

STANDARD FEATURES

- AcrylX™ • Residential Lifetime Warranty • 30 Year Commercial Warranty • Slip resistant floor • Accessories are optional
- Certified to meet CSA B45.5/1APMO Z124 standard • Complies with ADAAG and ICC A117.1-2017 when properly accessorized

Clarion Bathware's Freestanding Tubs are the newest addition to our product line. These beautiful designs, take everyday luxury to a whole new level!



SLEEK SILHOUETTE

This modern silhouette will update the look of any bathroom.

FR7242C 72" L X 42" W

72" Freestanding Tub

- Freestanding modern design
- Two piece
- Rear center drain
- Molded neck rests
- Molded arm rests
- Slip resistant floor
- Available with Rear Access Panel (FR7242CA)

ACCESSORY OPTION: HEATED BACKREST

Can be added to almost any molded seat of a Clarion shower or backrest of a Clarion tub/shower! Soothe your aches and pains with extra warmth of a heated seat or backrest.



See page 19 for more info.



To view engineering details, please visit our website at www.ClarionBathware.com.

Standard Color: White.
Premium Colors Available. See page 21.

FREESTANDING TUBS

A modern twist on an old classic. Our Freestanding Tubs offer a sleek, modern look that will become the focal point of any bathroom. Update your look with a tub that is as functional as it is beautiful.

Freestanding designs. Sleek silhouettes. Perfectly placed headrests. Everyday luxury, in all its glory. That is Clarion Bathware.

STANDARD FEATURES

- AcrylX™ • Residential Lifetime Warranty • 30 Year Commercial Warranty • Acrylic (5 Year Warranty) • Slip resistant floor • Accessories are optional
- Certified to meet CSA B45.5/IAPMO Z124 standard • Complies with ADAAG and ICC A117.1-2017 when properly accessorized

HEADREST

SLEEK SILHOUETTE

This modern silhouette will update the look of any bathroom.



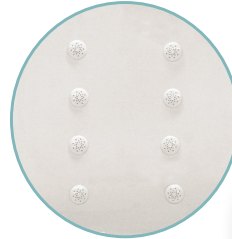
To view engineering details, please visit our website at www.ClarionBathware.com.

FR4272V

72" L X 42" W

72" Freestanding Tub

- Freestanding modern design
- Two piece
- Contoured lumbar support
- Slip resistant floor
- AcrylX™
- Molded arm rests
- Deep bathing well
- End drain



AIR ZONE JETS



UPGRADE

AIR ZONE SYSTEM

This new system allows you to upgrade your tub by adding pulsating air jets.

- Options:
- Bubble jet system
 - Mood lighting
 - Surround lighting



FA586636

66" W X 36" D X 23" H

66" Freestanding Acrylic Tub

- Freestanding modern design
- 2-piece Freestanding Design
- End drain
- Premium Cast Acrylic
- Slip resistant floor



FA3865AM

65" W X 38" D X 21 5/8" H

65" Freestanding Bathtub w/ Access Panel

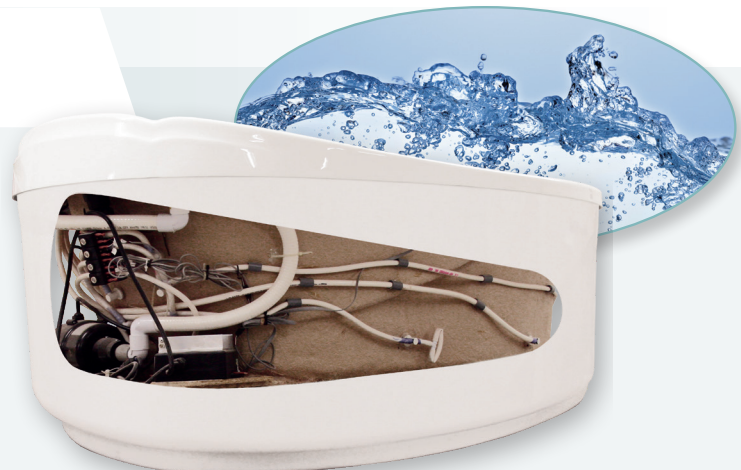
- Rear access panel
- Rear center drain
- AcrylX™
- Slip resistant floor

AIR ZONE SYSTEM

EVERYDAY LUXURY

Upgrade your bathing experience by adding Clarion's Air Zone System for total relaxation. This new system allows you to enjoy 24 pulsating jets in your tub or tub/shower!

For more information see page 18.



CUSTOM COMFORT

Clarion Bathware is ideal for homes, condominiums, even multi-unit apartments. Many of our bathtubs are available as whirlpools that can be fitted with options such as heaters, mood lighting or aromatherapy.



Model No. RE4272VX

Standard Color: White.
Premium Colors Available. See page 21.

TUB & SOAKERS

The right bathtub makes it easy to relax. Care-free, soothing, designed for comfort. Everyday luxury from Clarion Bathware. Our vacuum formed, one-piece units are made-to-order for new construction or remodeling needs. Consider an inviting array of sizes, shapes, colors and options in both acrylic and AcrylX™ finishes.



WHIRLPOOL OPTIONAL Many Clarion Tub/Soakers can be ordered with a whirlpool base. All units with this option will have this mark next to them.



BUBBLE JET & WHIRLPOOL OPTIONAL Many Clarion Tub/Soakers can be ordered with a whirlpool or a bubble jet base. All units available with both options will have this mark next to them.



RE4272LX or RE4272RX
72"W X 42"D X 26"H

72" Bathtub with 21" Apron

- Molded arm rests
- Available with removable access panel (RE4272LAX or RE4272RAX)
- Left or right hand drain
- 8 or 12 Whirlpool jet systems available
- Bubble jet system available



RE4272
72"W X 42"D X 26"H

72" Garden Tub with 21" Apron

- Molded arm rests
- Available with removable access panel (RE4272A)
- Rear center drain
- 8 or 12 Whirlpool jet systems available
- Bubble jet system available



RE4272DS
72"W x 42"D x 24"H

72" Drop-In Tub

- Molded arm rests
- Contoured lumbar support
- End drain
- 8 or 10 Whirlpool jet systems available
- Bubble jet system available



RE4272D
72"W x 39"D x 19"H

72" Hourglass Shaped Drop-In Tub

- Molded arm rests
- Center drain
- 8 or 12 Whirlpool jet systems available
- Bubble jet system available

STANDARD FEATURES

- AcrylX™ • Residential Lifetime Warranty • 30 Year Commercial Warranty • Slip resistant floor • Accessories are optional
- Certified to meet CSA B45.5/IAPMO Z124 standard • Complies with ADAAG and ICC A117.1-2017 when properly accessorized



RE3672D
72"W X 36"D X 22"H

72" Drop-In Tub

- Molded arm rests
- Contoured lumbar support
- End drain
- 8, 10, or 12 Whirlpool jet systems available
- Bubble jet system available



RE6000L or RE6000R
65 3/4"W X 36"D X 23 3/4"H

66" Tub w/ 17 1/2" Apron

- Molded soap holders
- Available with removable access panel (RE6000LA or RE6000RA)
- Left or right hand drain
- 6 or 8 Whirlpool jet systems available
- Bubble jet system available



RE3672L or RE3672R
72"W X 37"D X 19 1/2"H

72" Bathtub with 19 1/2" Apron

- Molded arm rests
- Premium Slip resistant floor
- Left or right hand drain
- 8 or 10 Whirlpool jet systems available
- Bubble jet system available



RE8864LAX (Front and left side aprons) or RE8864RAX (Front and right side aprons)
64"W X 44"D X 30"H

64" Rectangular Corner Tub w/ 22" Aprons

- Simulated tile design
- Available without removable access panel (RE8864LX or RE8864RX)
- Above the floor rough
- Left or right hand drain
- 6, 8 or 10 Whirlpool jet systems available
- Bubble jet system available



RE4160X
61"D x 24"H

61" Round Drop-In Tub

- Molded back rest
- Two person bathing well
- Above the floor rough
- End drain
- 12 Whirlpool jet systems available
- Bubble jet system available

Access
to
Pump



RE4330AX
60"W X 60"D X 27"H

60" Corner Tub w/ 22" Apron

- Molded seat
- Two removable access panels
- Above the floor rough
- Front center drain
- 4 or 8 Whirlpool jet systems available
- Bubble jet system available



RE4060A
60"W X 60"D X 27"H

60" Corner Tub w/ 22" Apron

- Molded seat and arm rests
- Removable access panel
- Front center drain
- 8 or 12 Whirlpool jet systems available
- Bubble jet system available



RE4060F
60"W X 60"D X 22 ½"H

60" Corner Drop-In Tub w/ Tiling Flange

- Molded seat and arm rests
- Comfortable bathing well
- Front center drain
- 8 or 12 Whirlpool jet systems available
- Bubble jet system available

STANDARD FEATURES

- AcrylX™ • Residential Lifetime Warranty • 30 Year Commercial Warranty • Slip resistant floor • Accessories are optional
- Certified to meet CSA B45.5/IAPMO Z124 standard • Complies with ADAAG and ICC A117.1-2017 when properly accessorized



RE3000

60"W x 48 ½"D x 23 ½"H

60" Garden Tub w/ 17" Apron

- Molded step
- Rear center drain
- 4 or 8 Whirlpool jet systems available



RE4260L or RE4260R

60"W X 43"D X 23 ¼"H

60" Deluxe Garden Tub w/ 19 ½ " Apron

- Molded arm rests
- Left or right hand drain
- Bubble jet system available



RE4240

60"W X 42 ½"D X 24"H

60" Oval Drop-In Tub

- Molded arm rests
- Comfortable bathing well
- End drain
- 4, 6 or 8 Whirlpool jet systems available



RE3100X

60"W X 42"D X 28 ¼"H

60" Garden Tub w/ 22" Apron

- Molded soap holders and arm rests
- Available with removable access panel (RE3100AX)
- Above the floor rough
- Rear center drain
- 4 or 8 Whirlpool jet systems available



RE3100MDX

60"W X 42"D X 28 ¼"H

60" Garden Tub w/ 22" Apron

- Molded arm rests
- Available with removable access panel (RE3100MDAX)
- Front center drain
- 4 or 8 Whirlpool jet systems available



RE4641X

60"W X 41"D X 25"H

60" Tub w/ 19" Apron and Bowed Front

- Molded arm rests
- Spacious bathing well
- Above the floor rough
- Rear center drain
- 8 or 12 Whirlpool jet systems available



RE4250T

60"W X 42"D X 15 ¾"H

60" Drop-In Tub

- Two acrylic towel bars
- End drain
- 4 or 6 Whirlpool jet systems available



RE3637

60"W X 37"D X 24"H

60" Garden Tub w/ 19" Apron

- Molded soap holder
- Available in above the floor rough (RE3637X)
- Available with removable access panel (RE3637A)
- Rear center drain
- 4 or 8 Whirlpool jet systems available
- Bubble jet system available

STANDARD FEATURES

- AcrylX™ • Residential Lifetime Warranty • 30 Year Commercial Warranty • Slip resistant floor • Accessories are optional
- Certified to meet CSA B45.5/IAPMO Z124 standard • Complies with ADAAG and ICC A117.1-2017 when properly accessorized



RE3660LA or RE3660RA

60"W X 37"D X 21 ½"H

60" Soaker Tub w/ 18" Apron

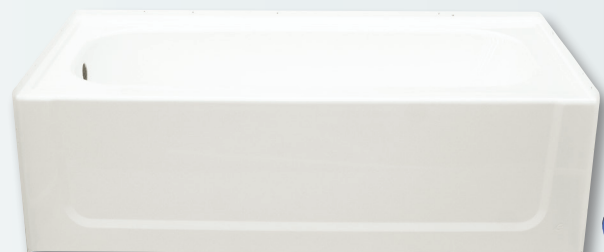
- Molded arm rests
- Removable access panel
- Left or right hand drain
- 6, 8 or 10 Whirlpool jet systems available
- Bubble jet system available
- Available without removable access panel (RE3660L or RE3660R)

RE3660D

60"W X 36"D X 20 ½"H

60" Drop-In Tub

- Molded arm rests
- Contoured lumbar support
- End drain
- 8 or 10 Whirlpool jet systems available
- Bubble jet system available



RE4601L or RE4601R

59 ¾"W X 32 ¾"D X 18 ½"H

60" Tub w/ 15" Apron

- Available in above the floor rough (RE4601LX or RE4601RX)
- Left or right hand drain
- 4 or 6 Whirlpool jet systems available

RE4630L or RE4630R

60"W X 30"D X 19"H

60" Tub w/ 18" Apron

- Available above the floor rough (RE4630LX or RE4630RX)
- Left or right hand drain
- 4 or 6 Whirlpool jet systems available
- Bubble jet system available



RE6032LB or RE6032RB

59 ¾" W X 33" D X 25 ½" H

60" Tub w/ 18" Apron

- Available with removable access panel (RE6032LBA or RE6032RBA)
- Left or right hand drain
- 4 or 6 Whirlpool jet systems available



RE4060D

59" W X 59" D X 21 ½" H

59" Corner Drop-In Tub

- Molded seat and arm rests
- Comfortable bathing well
- Front center drain
- 8 or 12 Whirlpool jet systems available



RE4500AX

55 ¼" W X 55 ¼" D X 27" H

56" Corner Tub w/ 22" Apron

- Molded seat and step
- Two removable access panels
- Above the floor rough
- Rear center drain
- 4 or 8 Whirlpool jet systems available



RE4000

54" W X 54" D X 18" H

54" Corner Drop-In Tub w/ Tiling Flange

- Molded seat
- Front center drain
- 4 or 8 Whirlpool jet systems available

STANDARD FEATURES

- AcrylX™ • Residential Lifetime Warranty • 30 Year Commercial Warranty • Slip resistant floor • Accessories are optional
- Certified to meet CSA B45.5/IAPMO Z124 standard • Complies with ADAAG and ICC A117.1-2017 when properly accessorized



Access
to
Pump

Access
to
Pump



RE4554AX

54"W X 54"D X 26 ¾"H

54" Corner Tub w/ 19 ¼" Apron

- Molded head and back rest
- Two removable access panels
- Above the floor rough
- Front center drain
- 8 or 12 Whirlpool jet systems available



RE2000X

54"W X 42"D X 24 ¾"H

54" Garden Tub w/ 19 ½" Apron

- Molded step
- Above the floor rough
- Rear center drain
- 4 or 8 Whirlpool jet systems available



RE4401LX or RE4401RX

54"W X 28"D X 17 ½"H

54" Tub with 16 ½" Apron

- Above the floor rough
- Left or right hand drain



RE4554DX

52"W X 52"D X 24"H

52" Drop-In Corner Bathtub

- Molded head rest
- Molded back rest
- Above the floor rough
- Front center drain
- 8 or 12 Whirlpool jet systems available



RE4631L or RE4631R

60"W X 31 1/4"D X 17 1/8"H

SMIN-6030 - 60" Tub w/ 16" Apron

- Gridlock slip resistant floor
- Left or right hand drain
- Bubble jet system available
- Available above the floor rough (RE4631LX or RE4631RX)



RE4633L or RE4633R

60"W X 33"D X 19"H

SMIN-6032 - 60" Tub w/ 18" Apron

- Gridlock slip resistant floor
- Left or right hand drain
- Bubble jet system available
- Available above the floor rough (RE4633LX or RE4633RX)
- 6 or 8 Whirlpool jet systems available



RE4637L or RE4637R

60"W X 37"D X 19"H

SMIN-6036 - 60" Tub w/ 18" Apron

- Gridlock slip resistant floor
- Left or right hand drain
- Bubble jet system available
- Available above the floor rough (RE4637LX or RE4637RX)
- 6 or 8 Whirlpool jet systems available



RE4643L or RE4643R

60"W X 43"D X 19"H

SMIN-6042 - 60" Tub w/ 18" Apron

- Gridlock slip resistant floor
- Left or right hand drain
- Bubble jet system available
- Available above the floor rough (RE4643LX or RE4643RX)
- 6 or 8 Whirlpool jet systems available



AIR ZONE SYSTEM UPGRADE

Upgrade your standard bubble jet system with Clarion's new luxurious Air Zone System. This new system allows you to enjoy 24 pulsating jets in your tub or tub/shower!

FEATURES:

- 100% customizable jet placement
- Personalized control panel with up to four preprogrammed modes
- Self cleaning air system
- A seamless addition that takes "everyday luxury" to a new level
- Works great with our bubble jet, chromatherapy and aromatherapy systems



NECK JET PILLOW

Add an ergonomic neck jet pillow to most Clarion tubs or tub/showers, for additional relief, comfort and support.

FEATURES:

- Ergonomic design for maximum comfort and support
- Standard white and black colors available
- Other colors require extended lead time

COLORS:

- Black



HEATING PAD

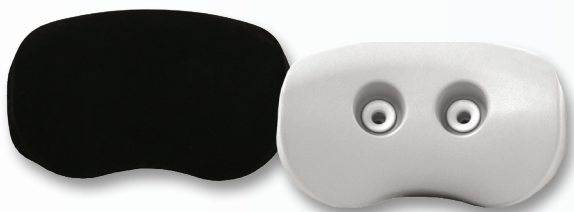
Can be added to almost any molded seat of a Clarion shower or backrest of a Clarion tub/shower! Soothe your aches and pains with extra warmth of a heated seat or backrest.

FEATURES:

- Can be added to the molded shower seat or backrest of your tub or tub/shower
- Factory installed
- 24 volt transformer included
- Electronic keypad included
- Maintenance free



WHIRLPOOL OPTIONS



NECK JETS

Two neck jets and soft molded head rest for maximum comfort. Molded head rest is available in Black. Controller included.



REMOVABLE MAGNETIC HEAD PILLOWS

Our removable magnetic head pillows are molded for maximum comfort. Easily removed for cleaning. Available in White or Black.



PUMPS

3/4 Hp or 1 Hp with thermal protected motor.
3/4 Hp Pump (120V/.7Amp/20Amp GFI) 1Hp Pump (120V/12Amp/20Amp GFI).



OZONE

Naturally formed from oxygen, leaves no products in water, no need for additional sanitary solutions to clean your bath. (120V/.09Amp/20Amp GFI).



HEATERS

Heater with stainless steel flow tube and element offers superior corrosion resistance. (120V/12.5Amp/20Amp GFI).



AROMATHERAPY STRIP DISPENSER

Strip dispenser assembly available in White, Bone, Biscuit.

TRIM OPTIONS



TILING FLANGE

Tiling flange available for drop in unit installed into alcove.

BUBBLE JET OPTIONS



MULTI HOLE AIR JET

16 bubble jet system available in White, Bone, Brass, Chrome, Brushed Nickel. (120V /15 Amp GFI)



BUBBLE JET KEYPAD

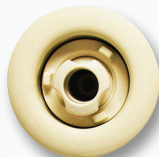
Electric components integrated in a watertight plastic membrane to ensure a long life for your unit.

WHIRLPOOL OPTIONS

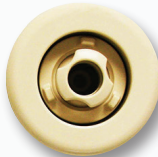
BIG JET COLORS



White



Bone



Biscuit



Sterling Silver



Chrome



Brass



Brushed Nickel



Black

MICRO JET COLORS



White



Bone



Biscuit



Sterling Silver



Chrome



Brass



Brushed Nickel

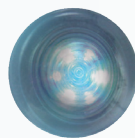


Black

LIGHTING



2" SPA MOOD LIGHTS
Energy efficient, long life LEDs. Cycles through the following colors: Clear, Pink, Red, Light Green, Dark Green, Lavender, Light Blue, Dark Blue. (120V/1Amp/20Amp GFI).



12 STRING LED SURROUND LIGHTS
Small LED mood lights. Cycles through the following colors: Clear, Pink, Red, Light Green, Dark Green, Lavender, Light Blue, Dark Blue. (12V/.24Amp/20Amp GFI).

ERGO BARS



ERGO BARS
High quality grab bars. Sizes available 6" or 11". Compliant to the 250 lbs shear test in accordance with ASTM:F446-85 and CSA B45 0-02.

CLARION'S COLOR OPTIONS

STANDARD ACRYLX™ COLORS



White

STOCK ACRYLX™ COLORS

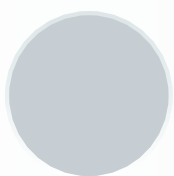


Biscuit



Bone

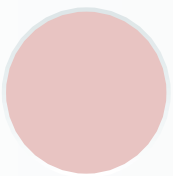
PREMIUM COLORS



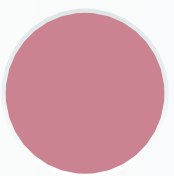
Platinum Gray



Innocent Blush



Cameo Rose



Dusty Rose



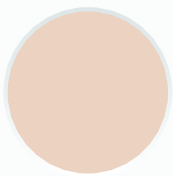
Dresden Blue



Heron Blue



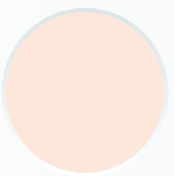
Desert Bloom



Fawn Beige



Peach Bisque



Peach Blossom



Tender Gray



Sterling Silver



Skylight Blue



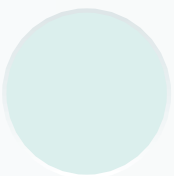
Zinfandel



Shell



Island Sea



Seafoam Green



Daydream Blue

**Please note that the colors shown above are an approximation. Actual colors may vary slightly from what is displayed.*

CUSTOM COLORS

Clarion Bathware can work with you to create any custom color. Clarion takes great pride in the ability to match colors. Our friendly and knowledgeable sales staff will happily assist you in the creation of your perfect color.

**Please note that custom colors may require additional lead times.*



OUR WARRANTY

The bathroom has to be as tough as it is beautiful. Durable and resistant to stain or mildew. That's Clarion Bathware.

Our hard, non-porous surfaces hold up to real life. Our colorfast products wipe to a shine without scrubbing so they're easy to maintain.

LIFETIME WARRANTY

Clarion Bathware's Residential Lifetime Warranty covers all AcrylX™ products against defects in material and workmanship.

CAST ACRYLIC WARRANTY

Clarion Bathware's 5 Year Cast Acrylic Warranty covers all cast acrylic products against defects in material and workmanship.

WHERE TO BUY

Clarion Bathware products are available through our vast network of wholesalers. You will find many of our products in stock and custom orders can be done directly with the wholesaler. Please contact your nearest wholesaler for price and availability.

FACTORY DIRECT SHIPPING

Clarion Bathware ships direct from our manufacturing facility in Marble, Pa., on our own fleet of air-ride trailers. Our company drivers guarantee on-time delivery and safe handling of our made-to-order bathware products.

To locate a wholesaler near you please go to www.ClarionBathware.com and click "Where to Buy".



Clarion

EVERYDAY LUXURY

44 Amsler Avenue
Shipperville, PA 16254

TEL 1 800 576-9228
FAX 1 814 226-0730

www.ClarionBathware.com

