

**READ AND UNDERSTAND THESE INSTRUCTIONS BEFORE INSTALLING FIXTURE.**

This fixture is intended for installation in accordance with the National Electrical Code and local or Federal code specifications. To assure full compliance with codes and regulations, check with your local electrical inspector before installation. To prevent electrical shock, turn off electricity at fuse box before proceeding.

**Retain these instructions for maintenance reference.**

INSTRUCTION SHEET NO.

**IS:1102P1**

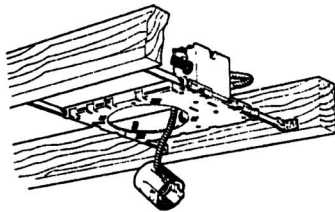
A0403

Page 1 of 2

**INSTALLATION PROCEDURE FOR FRAME-IN KIT 1102P1**

(MAY BE USED FOR EITHER 7•11 OR LYTECASTER TRIM)

**NEW CONSTRUCTION**



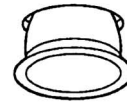
**FIG. A**  
**1. FRAME-IN**



**FIG. B**  
**2. CLOSE-IN**



**FIG. C**  
**3. SNAP-ON**



**FIG. D**  
**4. PUSH-UP**

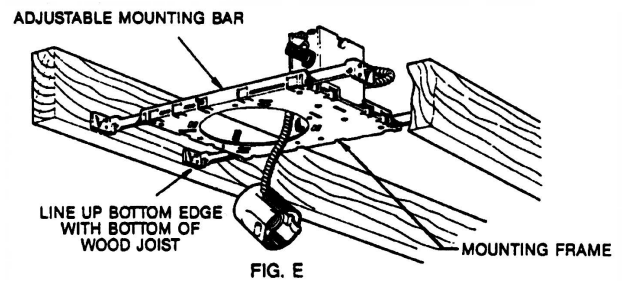
**WARNING-(RISK OF FIRE) DO NOT INSTALL INSULATION WITHIN 3 INCHES OF FIXTURE SIDES OR WIRING COMPARTMENT, NOR ABOVE FIXTURE IN SUCH A MANNER TO ENTRAP HEAT.**

**1. FRAME-IN (FIG. A)**

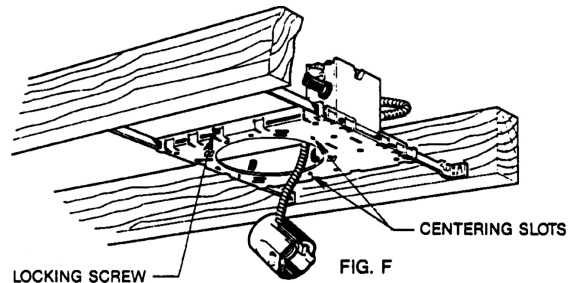
Fasten MOUNTING FRAME to wood joist. Line-up bottom edge of ADJUSTABLE MOUNTING BAR with bottom of wood joist (Fig. E). Wire to supply leads. White fixture lead to neutral supply lead. Black fixture lead to hot (120V) supply lead. Bare fixture wire to supply ground. Use wirenuts (local hardware items). Place all electrical connections in the J-BOX. Attach J-BOX COVER onto J-BOX. (Use built-in Cable Clamp in J-BOX for non-metallic sheathed cable (Romex) or armored cable (BX).)

**NOTE:**

- ADJUSTABLE MOUNTING BARS are pre-assembled on long side of MOUNTING FRAME for rigidity and ease of installation (Fig. E). MOUNTING BARS must be removed and installed on narrow side of MOUNTING FRAME if required. Locking screws are provided to lock frame in a desired position. (Fig. F)
- MOUNTING BARS can be extended to 24". The MOUNTING FRAME can be mounted off-center. CENTERING SLOTS are provided as guides to align adjacent frames.
- For suspended ceilings, make certain that bottom of MOUNTING FRAME is no higher than 1" above ceiling line and notched area of ADJUSTABLE MOUNTING BARS are positioned on top of T-BAR (Fig. G).



**FIG. E**



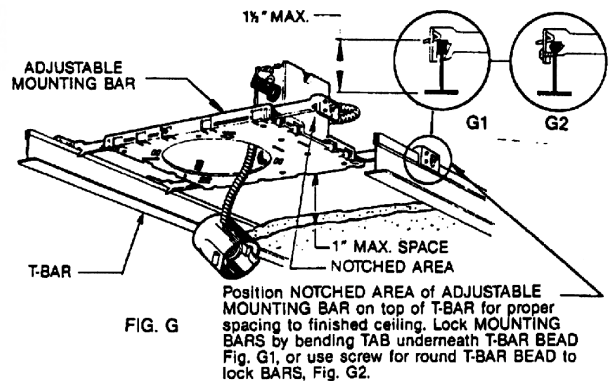
**FIG. F**

**2. CLOSE-IN (FIG. B)**

Install plasterboard or other dry type ceiling. Hole in board can be cut either on floor or after the board is secured in the ceiling. Use MOUNTING FRAME opening as cutting guide (make sure ROTO CLIPS are rotated out of hole area). ROTO CLIPS can only be rotated counter-clockwise. A lanced stop detail is provided to prevent ROTO CLIPS from rotating clockwise. This detail allows easy removal of REFLECTOR TRIM by rotating TRIM counterclockwise and permits installing REFLECTOR TRIM tightly against the ceiling surface by rotating TRIM clockwise after pushing TRIM into ceiling.

**NOTE:** For wet plaster ceiling, use Plaster Ring Accessory (order separately): No. 1960 for 1002P1 Frame-In Kit; No. 1961 for 1102P1 Frame-In Kit.

- SNAP-ON (FIG. C)**
  - PUSH-UP (FIG. D)**
- } SEE SEPARATE REFLECTOR TRIM INSTRUCTION SHEETS.

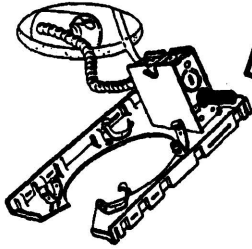


**FIG. G**

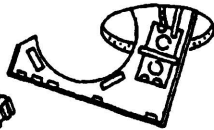
Position NOTCHED AREA of ADJUSTABLE MOUNTING BAR on top of T-BAR for proper spacing to finished ceiling. Lock MOUNTING BEAD Fig. G1, or use screw for round T-BAR BEAD to lock BARS, Fig. G2.

**INSTALLATION PROCEDURE FOR FRAME-IN KITS  
1002P1 & 1102P1 EXISTING CONSTRUCTION**

**FIG. A**  
**1. CUT-OPEN**



**FIG. B**  
**2. WIRE-IN**



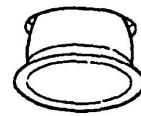
**FIG. C**  
**3. PUT THRU**



**FIG. D**  
**4. ANCHOR**



**FIG. E**  
**5. SNAP-ON**



**FIG. F**  
**6. PUSH-UP**

**1. CUT OPENING (FIG. A)**

Use MOUNTING FRAME opening as template.

**2. WIRE-IN (FIG. B)**

Wire to supply leads. (Use built-in Cable Clamp in J-Box for non-metallic sheathed cable (Romex) or armored cable (BX)).

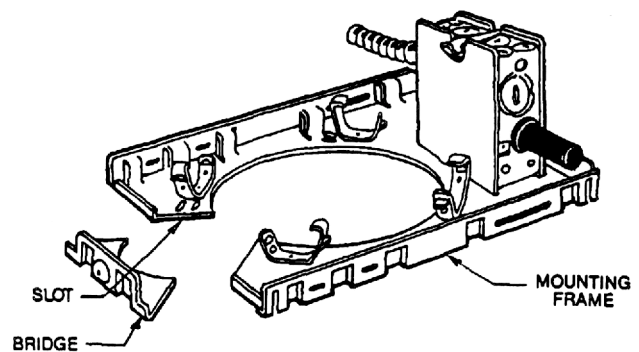
**3. PUT THROUGH (FIG. C)**

- a. Remove ADJUSTABLE MOUNTING BARS.
- b. Break off BRIDGE on MOUNTING FRAME as shown in FIG. G (break WEBS on SLOTS with cutting plier).
- c. Pass MOUNTING FRAME into CEILING as shown.

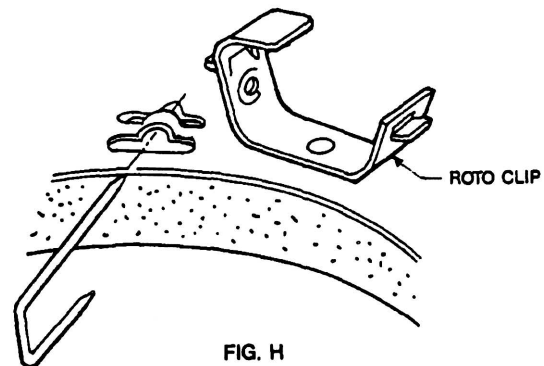
**4. ANCHOR (FIG. D)**

- a. Using NAIL CLIPS, (order separately; Cat. #1985N for 1002 Frame-In Kit, Cat. #1985S for 1102 Frame-In Kit).

- 5. SNAP-ON (FIG. E)** } SEE SEPARATE REFLECTOR TRIM INSTRUCTION SHEETS.
- 6. PUSH-UP (FIG. F)** }



**FIG. G**



**FIG. H**

**WARNING-USE ONLY REFLECTOR TRIMS PROVIDED BY LIGHTOLIER INC. USE OF OTHER MANUFACTURERS' REFLECTOR TRIMS VOIDS THE UNDERWRITERS LABORATORIES LISTING AND COULD CONSTITUTE A FIRE HAZARD.**