



Accessible Bath Tub Replacement Shower XST6030SHKD4 Installation Instructions

Tools/materials you might need for proper installation

- 6D galvanized screws
- silicone
- 4- 1.5" x 1.5" x 3" wooden blocks
- shims
- tape

STORAGE AND HANDLING OF FOUR PIECE SHOWER UNITS

1. Most handling damage is the result of impact blows to the back side of the fiberglass units.

2. These sectional units are typically unpacked and unbolted so the separate parts may be moved to the installation area. Please use caution when unbolting the sections. Carry the parts with minimal flexing to avoid stress cracks. (Measure and mark supply valve and shower head locations before unbolting).

3. Placing objects inside the unit can cause scratches or nicks to the finished surface. Do not use the shower as a trash receptacle! Always place a drop cloth or cardboard on the floor when working inside the shower.

4. Storing units outside right-side up can cause sunlight to discolor the gelcoat finish. Also, unit becomes unstable and is easily knocked over by wind or bumping.

5. The back of a fiberglass unit is not waterproof. Unit must be stored so water will drain off and not accumulate in one spot. Water can permeate the back laminates and soak the glassed in wood or cardboard supports causing bulges in the gelcoat surface.

6. Never drag a fiberglass unit on any surface. Always transport the unit by hand using (2) people or two wheel dolly.

7. Never let a fiberglass unit drop from any height, not even an inch or stress cracks are likely to occur.

8. Never clean fiberglass gelcoat surface with metal tools of any kind, including razor blades.

PLANNING YOUR INSTALLATION

INSTALLATION WARNING: This model is not designed to be installed as a one piece unit. The base shall be self supported (Choice of shims or Thin-Set) to support the shower base, and fasteners shall support the flanges prior to installation of the

wall sections. This procedure will ensure caulked joints or seams will not separate, allowing water to penetrate the wall cavity. Should installer wish to install without disassembly, special instructions apply. FAILURE TO COMPLY WILL VOID YOUR WARRANTY

1. Carefully remove the old bathtub at the installation site. The replacement showers are 77-1/2" tall so wallboard should be removed on all three walls to at least this height. See *Framing Diagram, Figure 1* for more information.

2. Always place cardboard or a drop cloth in the shower base to protect the finished surface to protect against scratching the high gloss interior surface.

3. Review the *Framing Diagram* in *Figure 1*. Measure the unit you will be installing, or obtain a dimensioned drawing of the shower from the web site or product supplier. Modify existing framing if required. For new construction, build framing structure in accordance with product dimensions and notes shown in the *Framing Diagram*. There should be a framing member provided for each flange on the shower, including the seams. Make certain your framing structure is plumb and square.

4. The shower base will be installed, leveled and fastened to the framing before the walls are installed. Wood shims must be placed by the installer at the back to provide support of the shower floor. Thin-Set mortar may also be used to provide support. See *Figure 3* for more information.

When installed, the wall sections will not be mechanically fastened together, or to the shower base. The three wall sections will be installed tight to each other and the shower base with the caulking in the seams providing a water resistant seal. These positions will be maintained when the shower flanges are fastened to the framing. The base must be solidly installed so the seams between the shower base and wall sections will not separate, allowing water to penetrate the wall cavity.



Accessible Bath Tub Replacement Shower XST6030SHKD4 Installation Instructions

INSTALLATION INSTRUCTIONS

1. Before you disassemble the shower unit, transfer the locations for the supply valve and shower head on the unit. Mark these locations on the back (reinforced surface) of the unit. After double checking the locations, drill 1/4" pilot holes.

2. Always place cardboard or a drop cloth in the shower base to protect the finished surface. Working from the finished side of the unit, using the proper size hole saw, cut holes for supply lines and shower head.

3. Remove the connection bolts and disassemble the unit. If present, remove shower rod. Carefully carry the parts to the installation area. Do not flex the parts when moving to avoid scratches and stress cracks.

4. Before installing the shower base into the framing alcove, the plastic fasteners and drain fitting must be installed. These fasteners will act as guides that will index the parts together for installation where access to the back side is unavailable.

5. Using the same holes where the shipping nuts and bolts

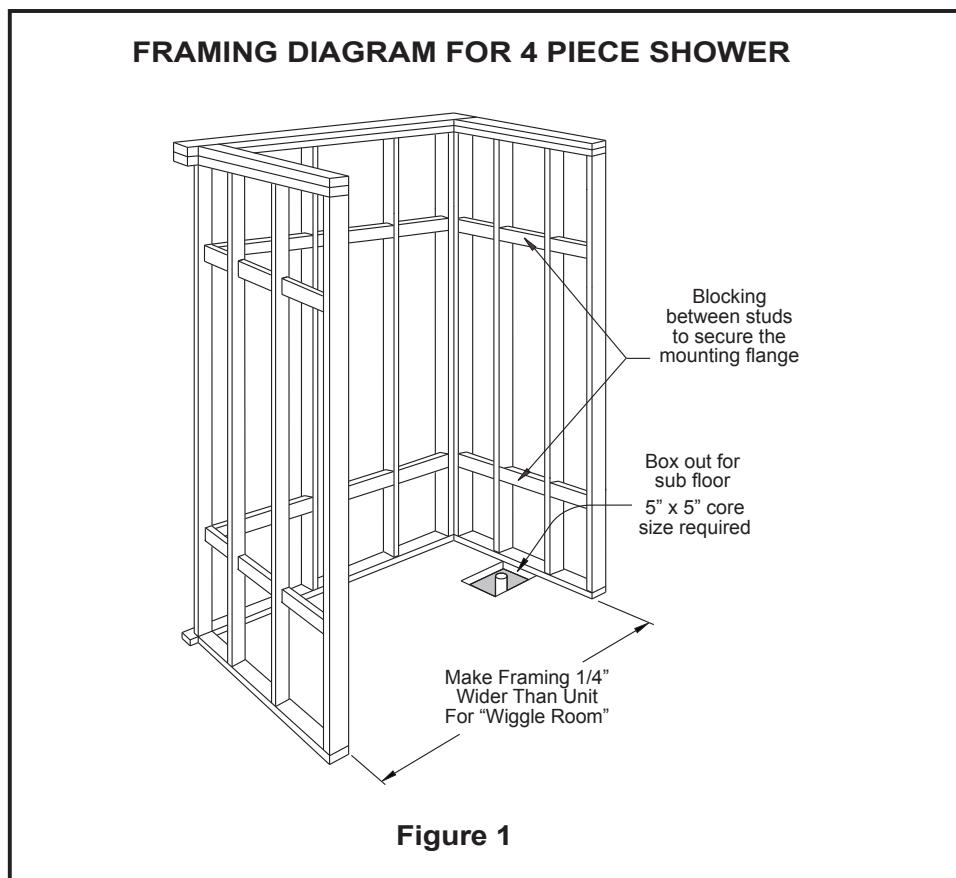
were located, apply a liberal amount of 100% silicone caulk to each plastic fastener before inserting them through the holes from the underside so they point toward the ceiling. See Figure 2.

NOTE: The caulking must be allowed to cure before assembly of the unit.

6. At this time, insert plastic fasteners through the holes in the vertical mounting surfaces on each side of the back wall panel. This will allow the caulking to cure while the shower base is installed. Apply 100% silicone caulk to the fasteners before inserting them through the holes. The fasteners must be inserted from the back so they point toward the front of the shower. See Figure 7 to see where the fasteners are located.

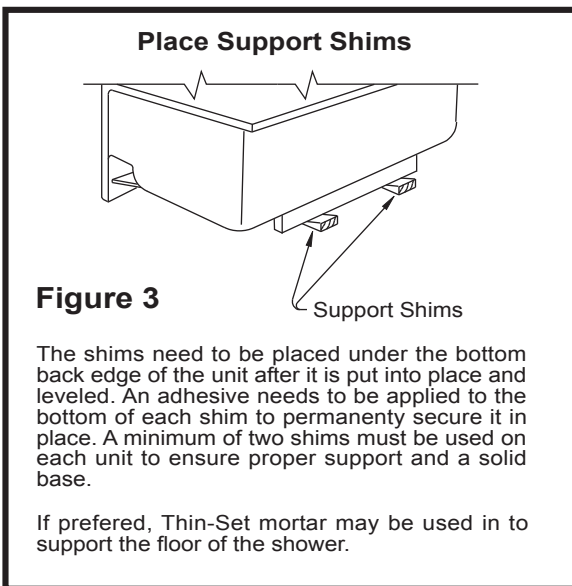
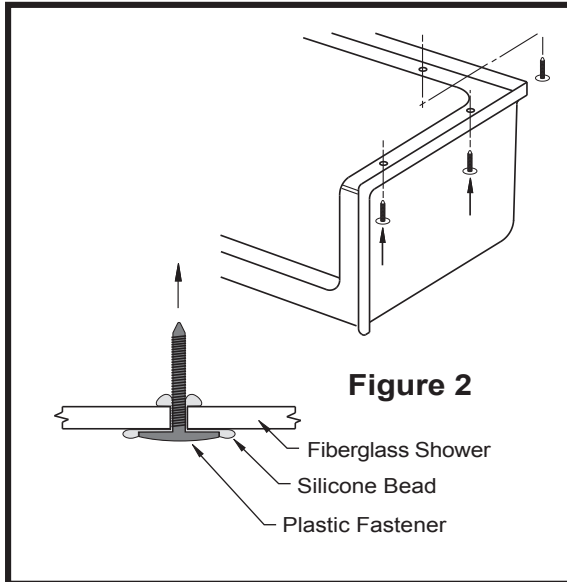
7. Carefully position the shower base so it sits on the front mounting flanges. Install the drain fitting in accordance with instructions provided with the fitting.

8. Locate the correct position of the wood shims so they contact the back edge of the shower. Use adhesive or





Accessible Bath Tub Replacement Shower XST6030SHKD4 Installation Instructions



fasteners to hold these shim in place to the sub floor: If using Thin-Set, carefully shovel Thin-set onto the sub floor. Make sure the thin-set is thick enough to ensure it will be in contact with the shower floor:

9. Carefully lift the shower base into the framing alcove. Guide the shower drain over the drain pipe with a hammer handle or equivalent. If using Thin-Set, shift the base if required. The bottom edge of the threshold should be in full contact with the sub floor when the shower is in the installed and leveled position. If using shims, be certain the shims are supporting the back edge of the shower:

10. Check level in two directions: Front to back and side to side. Use a carpenters level placed on top of the threshold and along the top finished surface of each side.

IMPORTANT! It is essential the shower base is level, and is in solid contact with either the Thin-Set mortar or the wood shims. The shower wall sections will not be mechanically fastened to the shower base.

The base must be solidly installed so the seams between the shower base and wall sections will not separate, allowing water to penetrate the wall cavity.

11. Fasten the shower base to the framing through the flanges using 6D galvanized screws on 8 inch centers along both sides, across the back and at the front of each side vertically.

INSTALLING THE BACK WALL

12. The silicone around the plastic fasteners should be cured before proceeding to the wall installation.

13. Use 6 wooden 2 x 2 blocks spaced evenly along the top connection surface of the shower base. These blocks will hold the wall sections above the mounting surface until you are ready for final installation. Use masking tape to temporarily secure the blocks. See Figure 4.

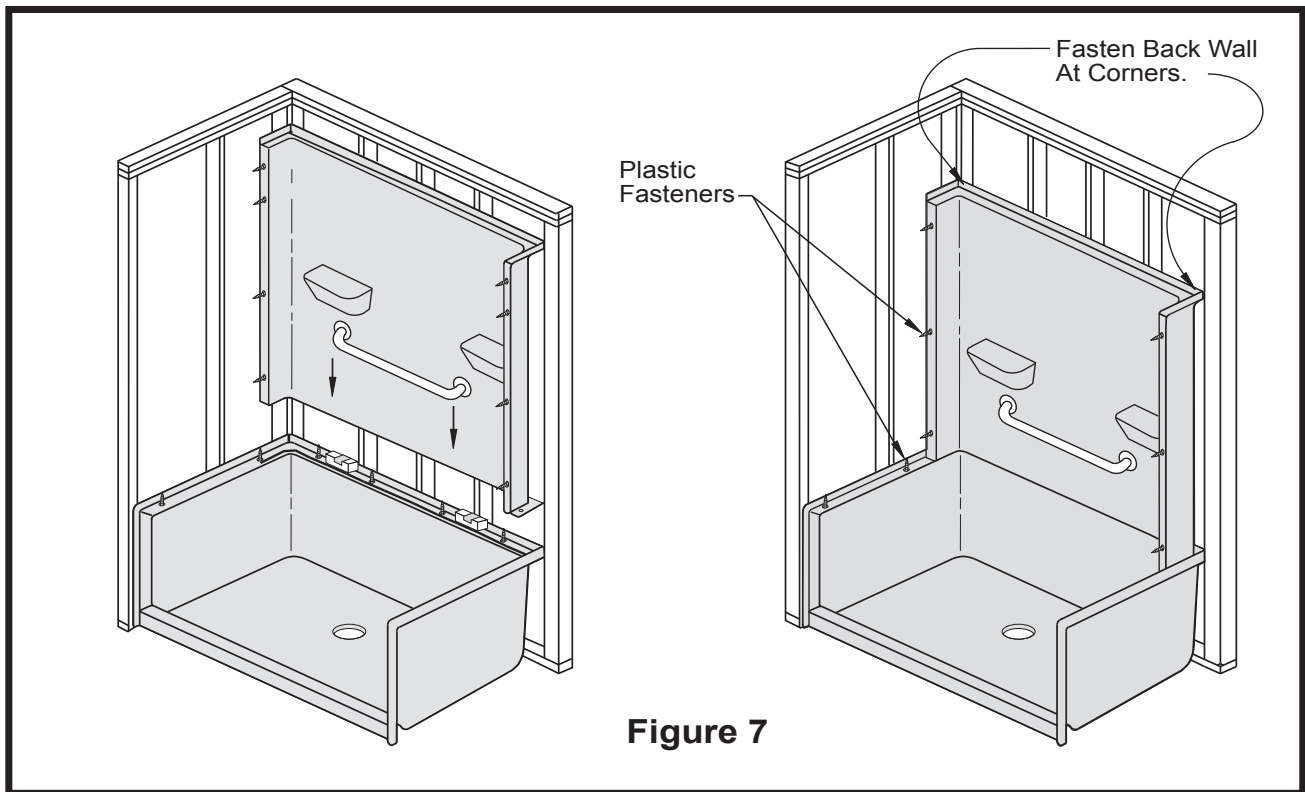
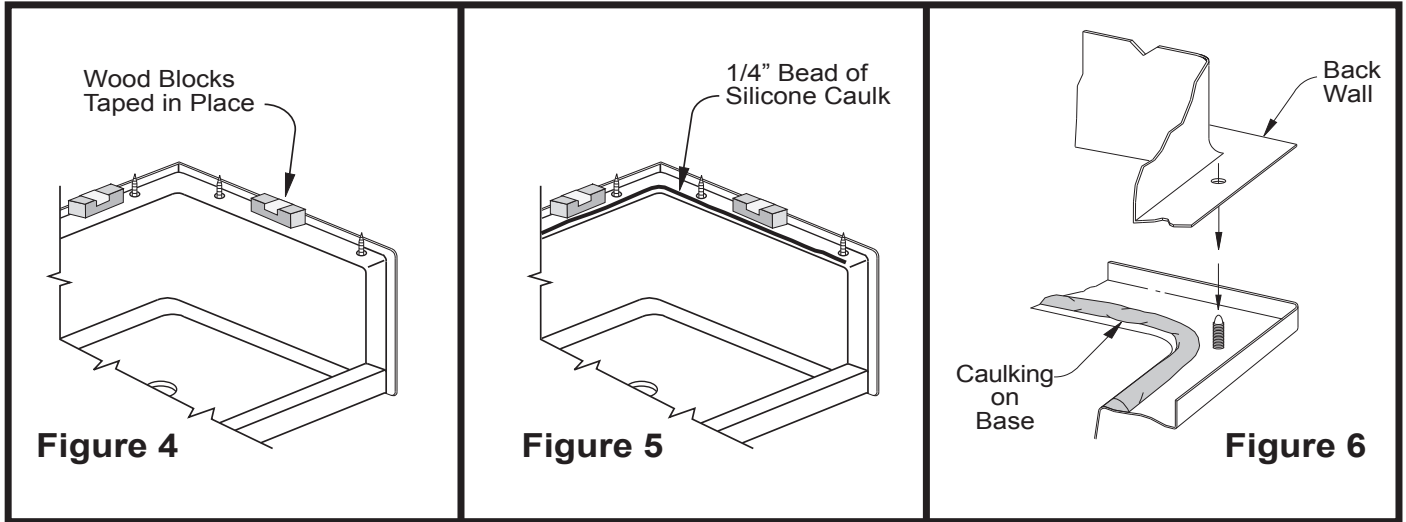
14. Apply a continuous bead of silicone caulk to the top connection surface. Apply the caulk between the inside edge and plastic fasteners. See Figure 5. The holes in the back wall mounting surface will index with the plastic fasteners to line up the part with the base. The caulking will secure the parts together when it cures. See Figure 6.

15. Place the center wall panel in place resting on the wood blocks. One by one, remove the back blocks and carefully lower the wall panel down on the connection surface. Note that the wall panel sticks out past the base unit approximately 3/8" when it is in the installed position. This is a normal function of the design. Take care to make sure the plastic fasteners slip through the corresponding holes in the wall panel.

16. Work the wall panel down so the caulking will spread along the bottom to create a water resistant seal. Make sure the edge of the panel is even with the edge on the shower base. Wipe away excess caulking. Once the caulking



Accessible Bath Tub Replacement Shower XST6030SHKD4 Installation Instructions



cures, it will assist in securing the bottom of the wall in place.

17. Using a carpenter's level, make sure the back wall is plumb. Fasten the wall to the framing through the mounting flange using 6D galvanized screws. At this point, fasten at each corner, and do not tighten the screws completely. There may be need for slight adjustment after the two side walls are installed.

INSTALLING THE SIDE WALLS

18. To install the side walls, apply a bead of 100% silicone caulking along the entire connection surface of the back wall and shower base. The caulk should be applied between the plastic fasteners and inside edge of the base.

19. Carefully lift the wall panel opposite the fittings and place it on the wood block. Take care to line up all holes in



Accessible Bath Tub Replacement Shower XST6030SHKD4 Installation Instructions

the side wall with the corresponding plastic fasteners in the back wall and shower base. Remove the wood block and move the wall into the installed position. As with the back wall, the side walls will stick out 3/8" past the base unit when the walls are in the installed position.

20. Press the wall into the caulking to create a water resistant seal. Make sure all seams line up in a satisfactory manner.

21. Install one galvanized screw in each corner of the wall panel to hold it in position.

22. Repeat this steps to install the opposite wall. The exception is to guide the control valve stems through the panel as it is moved into place. Press the panel into the caulking. Make certain the shower arm fitting is lined up with the hole so the shower head can be installed.

23. Insure the seams on all three wall sections line up with the shower base. Make certain the walls are seated in the caulking. Make certain the control valve stems and shower arm connections are lines up with the holes in the wall section. When satisfied with the fit, tighten the galvanized screws. Install additional screws on 8" centers vertically and 16" centers horizontally around the top of the wall.

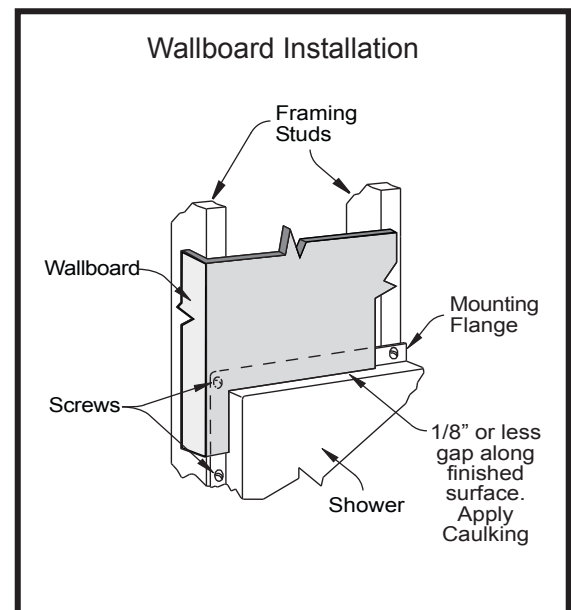
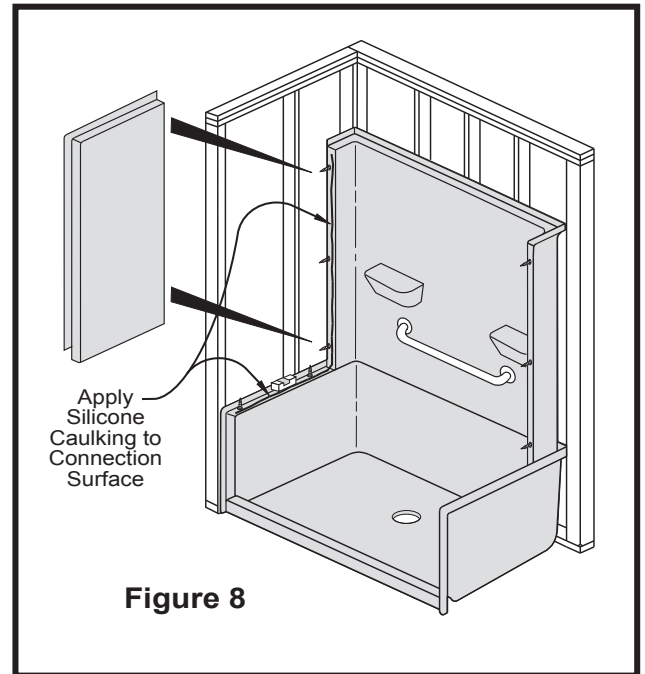
24. Proceed with all plumbing hook ups. Water test all connections before enclosing behind the unit. Wipe away any excess silicone caulking along all seams before it cures. Moisten a finger to smooth the caulking for a good finish.

INSTALLING THE SHOWER ROD

25. Reinstall the curtain rod by snapping it into the receiver cups mounted to each side wall.

WALL BOARD INSTALLATION

26. Typically, wallboard is installed to cover all mounting flanges. Wallboard should be held about 1/8" away from the finished surface of the shower walls. This small gap should be caulked to create a water resistant seal along the edge of the wallboard. Fasten the wallboard to framing with nails or screws. Finish as typical using corner bead if required. Remove joint compound before it dries.



CLEANING AND CARE

DO NOT USE ABRASIVE CLEANERS

Do not use abrasive cleaners which may scratch and dull the surface of the unit. To clean the unit after installation, use warm water and one of the stronger liquid detergents such as: top Job, Liquid Ajax or Mr Clean. Use these liquid detergents for normal day to day cleaning also.



Accessible Bath Tub Replacement Shower XST6030SHKD4 Installation Instructions

Plaster can be removed with a nylon or polypropylene scrubber. Do not use metal tools of any kind. Powder detergents such as Spic & Span may be used with a damp cloth to remove residue plaster. Minor stains may be removed using ammonia or bleach.

Lighted smoking materials will leave burn marks. This damage can often be repaired by using automotive polishing compound followed by an application of automotive body wax.

© 2014, The Praxis Companies, LLC
435 Industrial Rd., Savannah, TN 38372
Customer Service: 800.443.7269
www.praxiscompanies.com

LIMITED WARRANTY

Praxis warrants to the owner of its Shower units as follows:

Units manufactured of fiberglass reinforced polyester resin, that it will, free of charge, repair or exchange as its option, any Praxis unit found to be defective in materials or workmanship upon inspection by an authorized representative of Praxis for a period of thirty (30) years from date of purchase. The exchange of a unit is limited to supplying a replacement unit of comparable size and style and does not include any costs of removal or installation.

This warranty shall be voided if the unit is moved from its place of initial installation or is not installed in accordance with the instructions supplied by the manufacturer of the unit. Further, this warranty does not apply if the unit has been subjected to accident, abuse, misuse, damage caused by flood, fire or act of God.

Since local code requirements vary greatly throughout the country, distributors, dealers, installation contractors and users of plumbing products should determine whether there are any code restrictions on the use of a specific product. Praxis makes no representation or warranty regarding and shall not be responsible for any code compliance.

The owner agrees by use of this unit that the obligations of Praxis shall not exceed to contingent or indirect damage or injury to the structure of its contents, that the obligations of Praxis are limited to those set forth herein, and that no other obligations, expressed or implied, are assumed by Praxis.

Contact: Praxis Warranty Department 1-800-443-7269