

Materials & Tools you might need for proper installation:

Materials:

- 5 tubes of 100% Silicon adhesive
- #8 or #10 1.25" Galvanized Pan Head Wood Screws
- Concrete Anchor screws
- 1 - 5 gallon bucket (for testing the draft to the drain)
- 1 - 50 lb. concrete bag for bracing at threshold
- 2 - 50 lb. concrete bags for bracing at drain
- 2 large soft cloths
- 3 gallons of water (for testing the draft to the drain and mixing thin set)
- Brass compression shower drain - provided by others

Tools:

- Caulking gun
- Hammer
- Drill
- 1/8" drill bit
- Screwdriver
- 4' level
- 2' level
- Black removable marker (to mark the threshold)

STORAGE & HANDLING

Do not store units outdoors - Keep out of sunlight and exposure to weather.

1. Most handling damage is the result of impact blows to the back side of the shower units.
2. Stress cracks can develop when shipping boards are removed before unit is positioned for final installation in bathroom.
3. Placing objects inside of tub can cause scratches, abrasions or nicks to the finished surface.
4. Storing units outside right-side up can cause the sunlight to discolor the acrylic finish. Also, unit becomes unstable and is easily knocked over by wind or bumping.
5. The back side of the shower unit is not waterproof. Unit must be stored so that water will drain off of unit and not accumulate in any one spot. Water can permeate the back laminates and soak the glassed in wood supports causing.

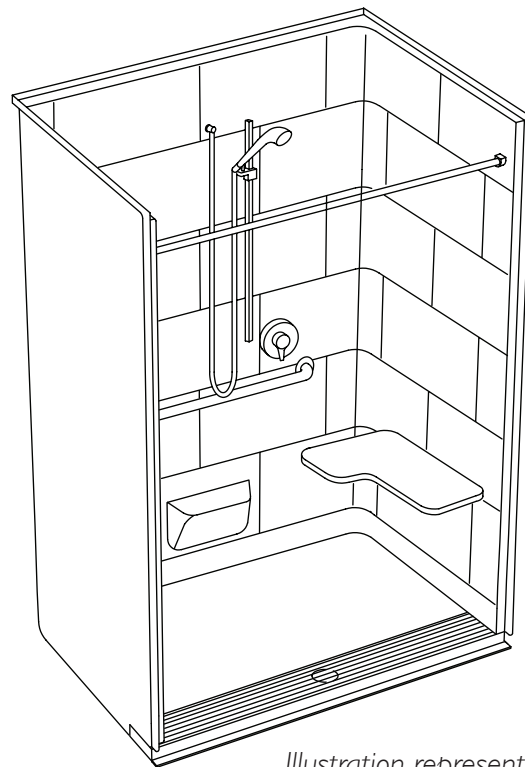


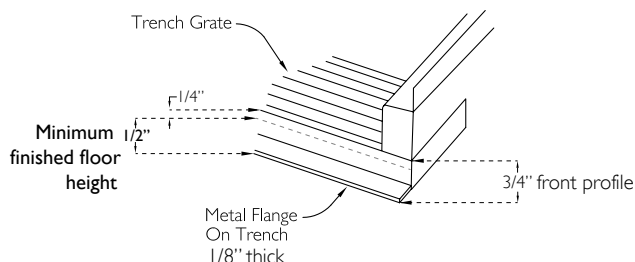
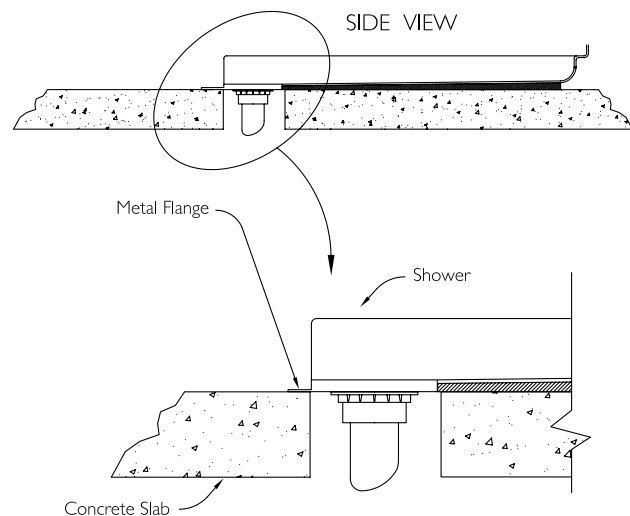
Illustration represents a one-piece trench drain shower system

NOTES

NOTE: INSTALLATION OF THESE SHOWER UNITS MAY BE SUBJECT TO CODE APPROVAL.

Refer to job prints and/or consult with architect to see if your installation must comply with ADA. These shower units install differently from typical residential showers. Installation may need to conform to requirements of the Americans With Disabilities Act (ADA) and other local codes. These requirements relate to the height of the threshold in relation to the finished floor. Certain showers will install directly on the sub floor and others will require a recess or pit. These showers require special preparation of the installation site, and very specific installation procedures to assure the shower drains properly and meets code requirements.

ADA REQUIREMENTS FOR THRESHOLD: Trench drain showers have 3/4" height front profiles on their thresholds. If installed on slab, finished floor material must be raised up at least 1/2" to meet the 2010 ADA Code standard. Consult with the architect for direction on finished floor detailing. Some designers choose to recess showers if the finished floor cannot make up the 1/2" difference, for example: sheet vinyl. Note: If a 2" deep or greater recess is encountered, do not use thin set mortar to raise the recessed pit. You will be required to use a self-leveling compound. Thin set mortar will not find level.



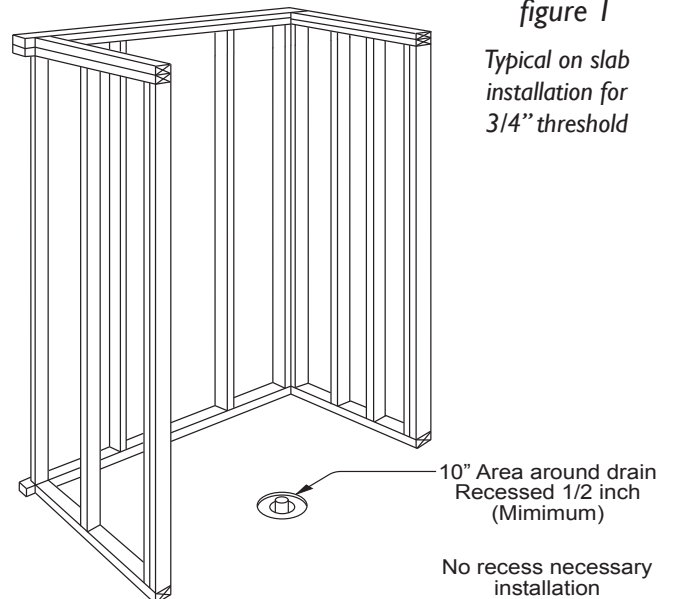
LEVEL NOTE FOR TRENCH SHOWER AND BASE

INSTALLATION: Before you start installing, ensure the sub flooring is level and clear of debris and moisture. Level flooring in the area intended for installation is very important. The sub floor must be level to within 1/8". Do not shim the shower more than 1/8". If the floor is not level, it could result in the unit not draining properly.

For floors off level more than 1/8", an acceptable one step method to properly level and secure the pan to the subfloor for proper support & drainage, a standard or fast curing thin-set tile mortar may be used to as a leveling compound and adhesive.

NO RECESS INSTALLATION- See Figure 1

This diagram illustrates a typical installation for units that do not require recessed installation to comply with ADA guidelines. This style shower is illustrated in Figure 1.



NOTE FOR SHOWER INSTALLATION (See figure 2):

A 10" x 10" x 1/2" deep box out (6" core drill) is required to be centered around the drain pipe. Ensure this area is prepared before installation.

The Shower System + Trench Drain Installation Instructions

AcrylX™ & Solid Surface Bathware

SHOWER SYSTEM + TRENCH DRAIN INSTALLATION

1. Ensure the alcove is clean before continuing. Clean the area of all dirt, trash, oil, grease, water and other contaminants that may affect adhesion. (See picture 1)

2. Place the shower into the intended alcove to confirm proper placement of the drainpipe and sizing of the alcove.

****Helpful tip:** Place three sections of PVC pipe on floor to help slide and tilt unit into position. (See pictures 2 and 3)



PICTURE 2



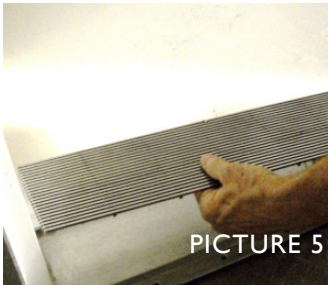
PICTURE 3

3. To keep the unit clean place the cardboard from its packaging on the floor to prevent scuffing. (See picture 4)

4. Remove the grate and store for safe keeping. Depending on your model, you may need to remove the screws or simply break the magnetic bond to remove the grate. (See pictures 5)



PICTURE 4

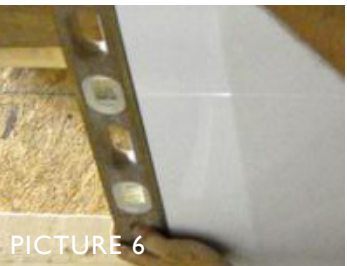


PICTURE 5

5. Confirm that the trench is flush with the floor.

NOTE: YOU DO NOT NEED TO BACKFILL THE DRAIN LOCATION WITH BEDDING MATERIAL

6. Confirm that the unit is level. Check side flanges, back flange and floor behind trench drain. (See pictures 6, 7, and 8)



PICTURE 6



PICTURE 7

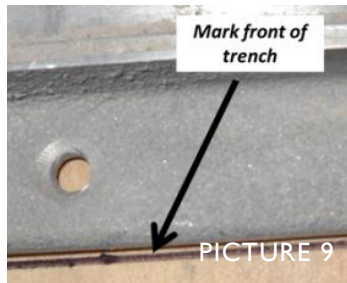


PICTURE 8

NOTE: The sub floor must be level to within 1/8". Do not shim the unit more than 1/8". If sub floor is more than 1/8" out of level, unit must be removed and floor leveled using a leveling compound.

7. Draw a line on the floor where the front of the trench drain lies. (See picture 9)

8. For shower units, remove the unit from the alcove by leaning it forward, so that it can be laid on its front flanges. (Again using the PVC piping referenced in step 2)

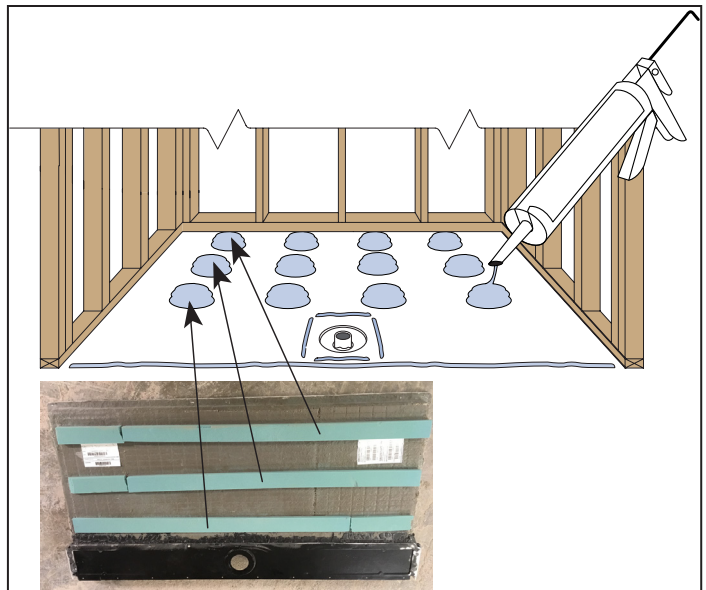


PICTURE 9

NOTE: This line will represent your farthest reference point for silicone adhesive.

9. Apply 5 - 100% silicone caulking pads 3/4" high by 3" wide equal distance side to side per strip. For narrower units, apply 3 silicone caulking pads per strip (See Figure 4)

NOTE: YOU DO NOT NEED TO BACKFILL THE DRAIN LOCATION WITH BEDDING MATERIAL



The Shower System + Trench Drain Installation Instructions

10. Install the recommended brass drain (sold separately) in the unit prior to setting it into final position, but do not store the shower on its bottom while the drain is installed. (Picture 10)



PICTURE 10

****HELPFUL TIPS:**

Temporarily remove the internal gasket.

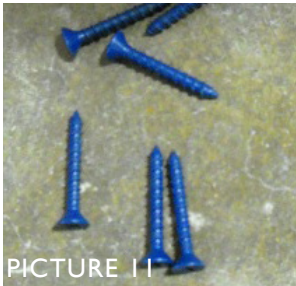
Set the unit into place and guide the drainpipe into the drain by using the handle of a hammer or similar object.

IMPORTANT NOTE:

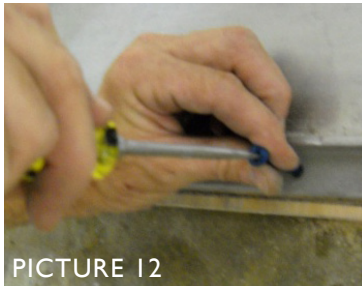
Do not step on the shower floor after it has been placed on adhesive.

11. Recheck level and plumb following step 6.

12. Secure the trench drain to the floor using 3/16" x 2" pan head tapcon concrete screws. (See pictures 11 and 12) Pre-drill the screw holes to prevent tear out.



PICTURE 11



PICTURE 12

13. Secure the unit to the framing members through the flanges using #8 & #10 Galvanized Screws on 8" centers. (See pictures 13 and 14)

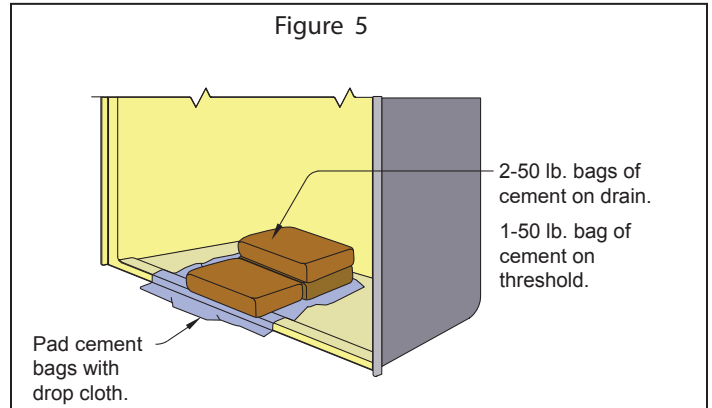


PICTURE 13



PICTURE 14

14. Insert gasket and make drain connection.



15. Test unit for proper drainage by pouring 3-5 gallons of water into unit and monitoring. If unit does not drain properly, the unit must be pulled back up to determine where the problem lies. This should be done immediately before the materials have had a chance to set.

WARNING: Continuation of installation less water test will void warranty service if water does not drain completely following installation.

16. Bracing bags can be removed after 72 hours (in heated environments).

17. Re-install grate. (See picture 15)

****ATTENTION:** The threshold must be flat across the full width with no bow and level to the floor.



PICTURE 15

Finishing panels (plasterboard, ceramic tile, etc.) should completely cover the fastening flange. The joint between the wall panels and the finishing panels can be covered with a joint compound, a plastic stripe, or a tile strip. To prevent water infiltration, apply a bead of silicone between the floor and the threshold of the unit.

Following the appropriate installation procedures is imperative on this product. Not following these procedures could result in product failure which will not be covered under manufactures warranty.

American Bath Group
435 Industrial Road | Savannah, Tennessee 38372
Tel: (800) 443 7269 | Fax: (731) 925 0379
www.americanbathgroup.com