

MAAX MADE RIGHT

✓ GELCOAT UNITS



A SOLID COMMITMENT TO PLUMBERS AND BUILDERS

For more than 40 years, MAAX has been a dynamic North American leader committed to excellence in bathware design and manufacturing. Our **MAAX Professional** gelcoat product line delivers a full range of constructive solutions for you, today's plumber, home builder and renovator. It helps you increase your efficiency and margin while satisfying your customers.

WITH MAAX PROFESSIONAL, OUR TOTAL COMMITMENT TO YOU IS:

- 1 **Higher quality materials** and unmatched manufacturing excellence
- 2 **Strong reinforcement** where it's needed
- 3 **Consistent, durable** quality
- 4 **Flawless finish that withstands** the test of time
- 5 **Optimal protective** packaging



1 BETTER MATERIALS, MASSAGED TO PERFECTION

MAAX puts our best into the mix and our fingerprints on every product.

- ✓ **Integrity through and through.** Our richer mix of fiberglass and resin features **longer strands and a higher glass content** to create greater surface integrity for unbeatable strength with just enough flexibility to adjust to uneven construction.
- ✓ **Double down on quality.** We **hand roll** our fiberglass and resin laminate **three times**. The result is in what you don't see: no exposed fiberglass strands, no uneven surfaces, no air bubbles and no delamination.
- ✓ **Smooth going.** Our attentive hand-rolling process created a **smooth, even surface** on the backside for easier handling and less splintering.



MAAX MADE RIGHT

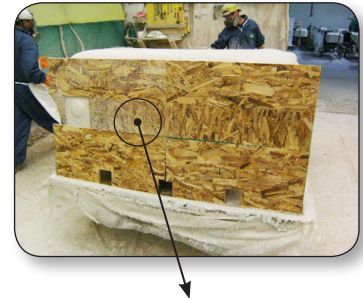
✓ GELCOAT UNITS



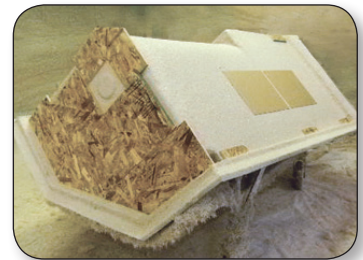
2 STRONG REINFORCEMENT WHERE IT'S NEEDED

MAAX builds products to withstand shipping and handling as well as years of use.

- ✓ **Forget floor fatigue.** Our bottoms take top priority. A **multi-piece 7/16-inch** layer of **OSB engineered wood** is fitted snugly underneath, matched to the unit's contours, for **maximum surface contact** that fights flex and provides superior base strength.
- ✓ **Our aprons? Covered!** The OSB layer extends along the entire apron to help protect and maintain its straight edge from potential damage during shipping and installation.
- ✓ **Add doors with confidence.** Wood added behind sidewalls in door jamb areas provide a sturdy installation surface.
- ✓ **A little extra.** We add corrugated cardboard or wood for strength and protection in strategic areas, like the control wall for valve or handle installation.



OSB Engineered Wood



3 PROUD TO SHOW HOW THICK WE ARE

Our structure integrity shows at our flanges and drain.

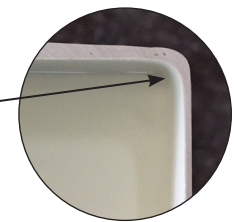
- ✓ **Uniform, solid flanges.** Our flanges show the story: thick and dense without an air bubble, chip or crack. Machine-precision trimming promises **hassle-free drywall finishing** for you.
- ✓ **Sturdy, strong drains.** Quality we can literally stand on with visible, solid strength and smooth sanded edges.



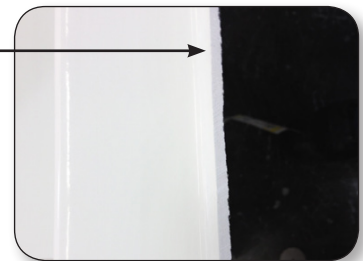
Underneath Drain View



Flange Top View



Flange Side View



MAAX MADE RIGHT

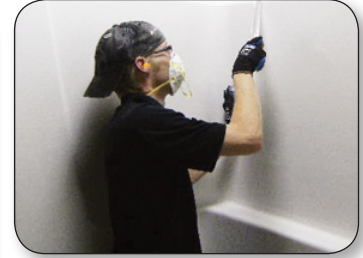
✓ GELCOAT UNITS



4 BEAUTIFUL TO LOOK AT TODAY AND TOMORROW

Our state-of-the-art gelcoating process retains its fresh-from-the factory glossy good looks longer.

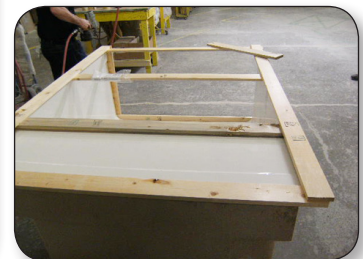
- ✓ **Eye for perfection.** Our gelcoat, generously and uniformly applied, is meticulously **hand inspected** to ensure every unit has a flawless finish every time.
- ✓ **A brilliant finish.** We bring out a deep, **lustrous shine** to every gelcoat unit by buffing and polishing to perfection.
- ✓ **Efficient anti-slip bases.** Users will love the non-porous coating on our bases that offer safety while cleaning with ease. Meaning a safer overall product.



5 PACKED WITH PROVEN PROTECTION

We package our work to protect your investment so units arrive “handled with care” even when they are not.

- ✓ **Consistently low return rates.** Best-in-class packaging practices mean our products have a safe one-way journey – from our home to yours.
- ✓ **We have it covered.** Exposed products areas – flanges, aprons, thresholds – receive **extra attention and protection**, such as wood bracing.
- ✓ **No scuffs, dings or dents.** Wood bracing a quarter-inch lower than the skirt keeps the product apron edge straight and prevents it from ever touching the floor (or worse) underneath.
- ✓ **Stable and sturdy.** Two horizontal wood braces run wall-to-wall, allowing easier handling and preventing bending or flexing that could crack unit corners.



July 2012