

# DELIGHT 6032 IF

59 3/4" x 32 1/4" x 19 1/2" Bathtub



## OPTIONS

COLOR(S)	CONFIGURATION(S)	SIZE(S)	SYSTEM(S)
White	Left Drain Right Drain	60 x 32	Activ-Air
			Mass-Air
			Mass-Air & Activ-Air
			Soaker - no system
			Whirlpool
			Whirlpool & Activ-Air
			Whirlpool & Mass-Air
			Whirlpool & Mass-Air & Activ-Air

## FEATURES

- Made of thermoformed acrylic and reinforced with fiberglass
- High gloss finish is resistant to dulling, scratching and fading
- Alcove installation
- Available in left or right drain configuration
- Comes with leveling legs for ease of installation
- Available with massage systems for outmost relaxation
- Integrated tiling flange for added leak protection and easy installation of shower walls
- Integrated armrests for a relaxing bathing experience
- 10-year limited warranty provides peace of mind

## ATTRIBUTES

- Installation Type : Alcove
- Above-the-Floor Rough : No
- Material : Acrylic
- Residential Warranty : 25
- Commercial Warranty : 1 Year

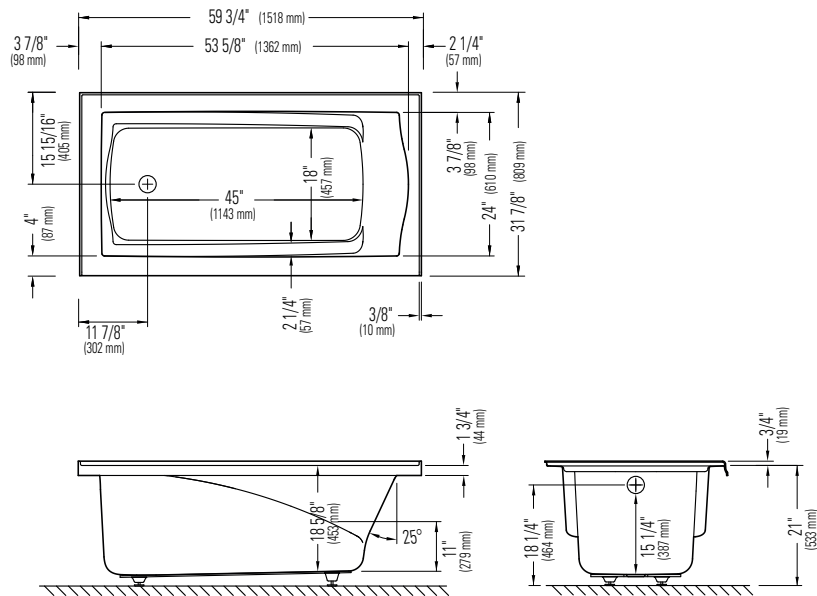



**Produits Neptune**

## DELIGHT 3260

LEFT DRAIN WITH INTEGRATED TILING FLANGE

Bathtub



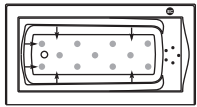
\*A bathtub fitted with back jets can cause the pump to protrude by approximately 3" from the overall dimension.

\*\*All dimensions are approximate and subject to change without notice. Please refer to the installation guide before beginning the installation

### DIMENSIONS

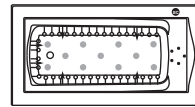
PRODUCT LENGTH	BATHING WELL LENGTH	PRODUCT WIDTH	BATHING WELL WIDTH	PRODUCT HEIGHT
59 3/4"	45"	32 1/4"	18"	19 1/2"
DEEP SUMP HEIGHT	DECK WIDTH	WEIGHT	DRAIN SIZE	SHIPPING LENGTH
15 1/4"	4"	59 Lbs	2"	63"
SHIPPING WIDTH	SHIPPING HEIGHT			
33 1/4"	23"			

### SYSTEMS



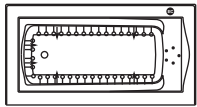
#### Mass-Air/Whirlpool Combo

Included: 6 turbo jets, 5 micro-rotating back jets, 11 Mass-Air injectors, 13 A pump, Optima blower 750W (1 1/2 h.p.) with 300W heating element, diverter valve and backlit electronic control.



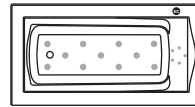
#### Active-Air/Mass-Air/Whirlpool Combo

Included: 6 turbo jets, 5 micro-rotating back jets, 36 Active-Air micro-jets, 11 Mass-Air injectors, 13 A pump, two Optima blowers 750W (1 1/2 h.p.) with 300W heating element, diverter valve and backlit electronic control.



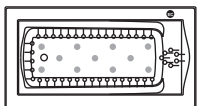
#### Active-Air/Whirlpool Combo

Included: 6 turbo jets, 5 micro-rotating back jets, 36 Active-Air micro-jets, 13 A pump, Optima blower 750W (1 1/2 h.p.) with 300W heating element, diverter valve and backlit electronic control.



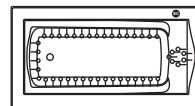
#### Mass-Air

Included: 16 (11-5) injectors, Optima blower 750W (1 1/2 h.p.) with 300W heating element and backlit electronic control.



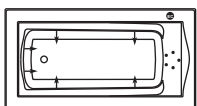
#### Mass-Air/Active-Air Combo

Included: 43 Active-Air micro-jets, 11 Mass-Air injectors, two Optima blowers 750W (1 1/2 h.p.) with 300W heating element and backlit electronic control.



#### Active-Air

Included: 43 micro-jets, Optima blower 750W (1 1/2 h.p.) with 300W heating element and backlit electronic control.



#### Whirlpool

Included: 6 turbo jets, 5 micro-rotating back jets, 13 A pump, diverter valve and electronic control.

Project:

Contractor:

Representative:

Date:

Tel:

Notes: