

# WIND 6034

59 7/8" x 35 7/8" x 21" Bathtub



## OPTIONS

COLOR(S)	CONFIGURATION(S)	SIZE(S)	SYSTEM(S)
White	Left Drain Right Drain	60 x 36	Activ-Air
			Mass-Air
			Mass-Air & Activ-Air
			Soaker - no system
			Whirlpool
			Whirlpool & Activ-Air
			Whirlpool & Mass-Air
			Whirlpool & Mass-Air & Activ-Air

## FEATURES

- Made of thermoformed acrylic and reinforced with fiberglass
- High gloss finish is resistant to dulling, scratching and fading
- Corner bathtub installation
- Available in left or right drain configuration
- Comes with leveling legs for ease of installation
- Integrated armrests for a relaxing bathing experience
- Available with massage systems for outmost relaxation
- Integrated tiling flange for added leak protection and easy installation of shower walls
- 10-year limited warranty provides peace of mind

## ATTRIBUTES

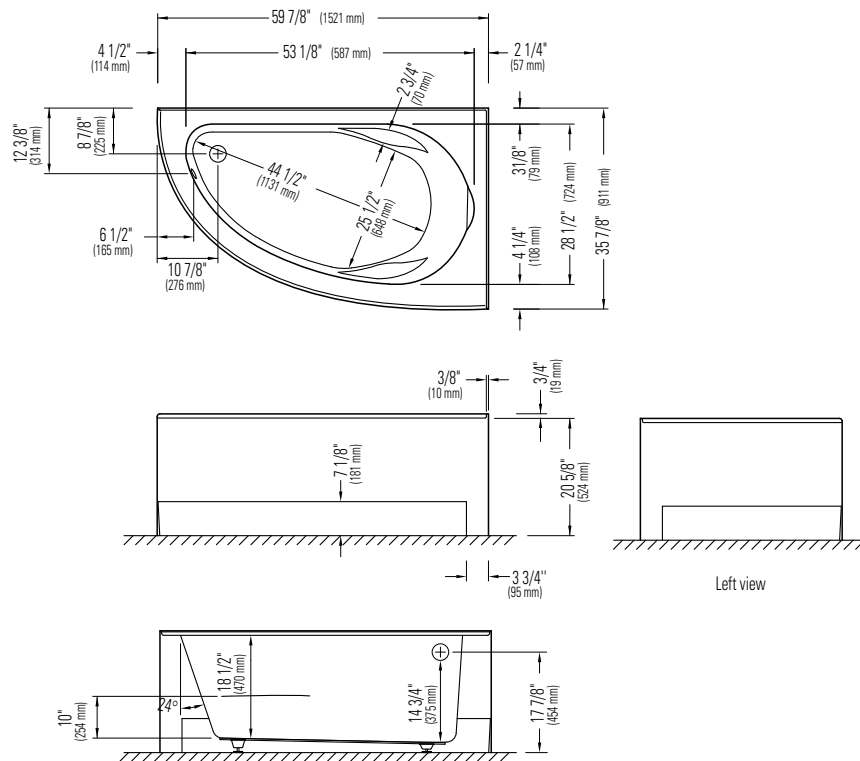
- Installation Type : Corner
- Above-the-Floor Rough : No
- Material : Acrylic
- Residential Warranty : 25
- Commercial Warranty : 1 Year





**Produits Neptune**

**WIND**  
LEFT DRAIN  
Bathtub



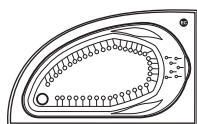
\*A bathtub fitted with back jets can cause the pump to protrude by approximately 6" from the overall dimension.

\*\*All dimensions are approximate and subject to change without notice. Please refer to the installation guide before beginning the installation

### DIMENSIONS

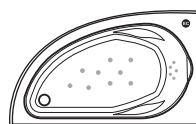
PRODUCT LENGTH	BATHING WELL LENGTH	PRODUCT WIDTH	BATHING WELL WIDTH	PRODUCT HEIGHT
59 7/8"	44 1/2"	35 7/8"	25 1/2"	21"
DEEP SUMP HEIGHT	DECK WIDTH	SKIRT HEIGHT	WEIGHT	SHIPPING LENGTH
14 3/4"	2 1/4"	20 5/8"	74 Lbs	63 1/2"
SHIPPING WIDTH	SHIPPING HEIGHT			
43 1/2"	22"			

### SYSTEMS



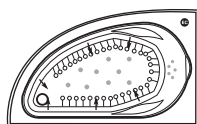
#### Activ-Air

Included: 41 micro-jets, Optima blower 750W (1 1/2h.p.) with 300W heating element and backlit electronic control.



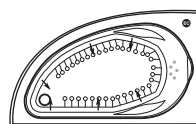
#### Mass-Air

Included: 14 (9-5) injectors, Optima blower 750W (1 1/2h.p.) with 300W heating element and backlit electronic control.



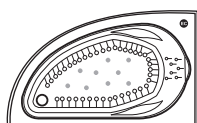
#### Activ-Air/Mass-Air/Whirlpool Combo

Included: 6 turbo jets, 5 micro-rotating back jets, 37 Activ-Air micro-jets, 9 Mass-Air injectors, 13 A pump, two Optima blowers 750W (1 1/2 h.p.) with 300W heating element, diverter valve and backlit electronic control.



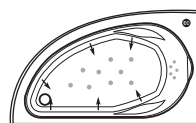
#### Activ-Air/Whirlpool Combo

Included: 6 turbo jets, 5 micro-rotating back jets, 37 Activ-Air micro-jets, 13 A pump, Optima blower 750W (1 1/2h.p.) with 300W heating element, diverter valve and backlit electronic control.



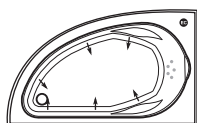
#### Mass-Air/Activ-Air Combo

Included: 41 Activ-Air micro-jets, 9 Mass-Air injectors, two Optima blowers 750W (1 1/2h.p.) with 300W heating element and backlit electronic control.



#### Mass-Air/Whirlpool Combo

Included: 6 turbo jets, 5 micro-rotating back jets, 9 Mass-Air injectors, 13 A pump, Optima blower 750W (1 1/2h.p.) with 300W heating element, diverter valve and backlit electronic control.



#### Whirlpool

Included: 6 turbo jets, 5 micro-rotating back jets, 13 A pump, diverter valve and electronic control.

Project: \_\_\_\_\_

Contractor: \_\_\_\_\_

Representative: \_\_\_\_\_

Date: \_\_\_\_\_

Tel: \_\_\_\_\_

Notes: \_\_\_\_\_

\_\_\_\_\_  
\_\_\_\_\_  
\_\_\_\_\_