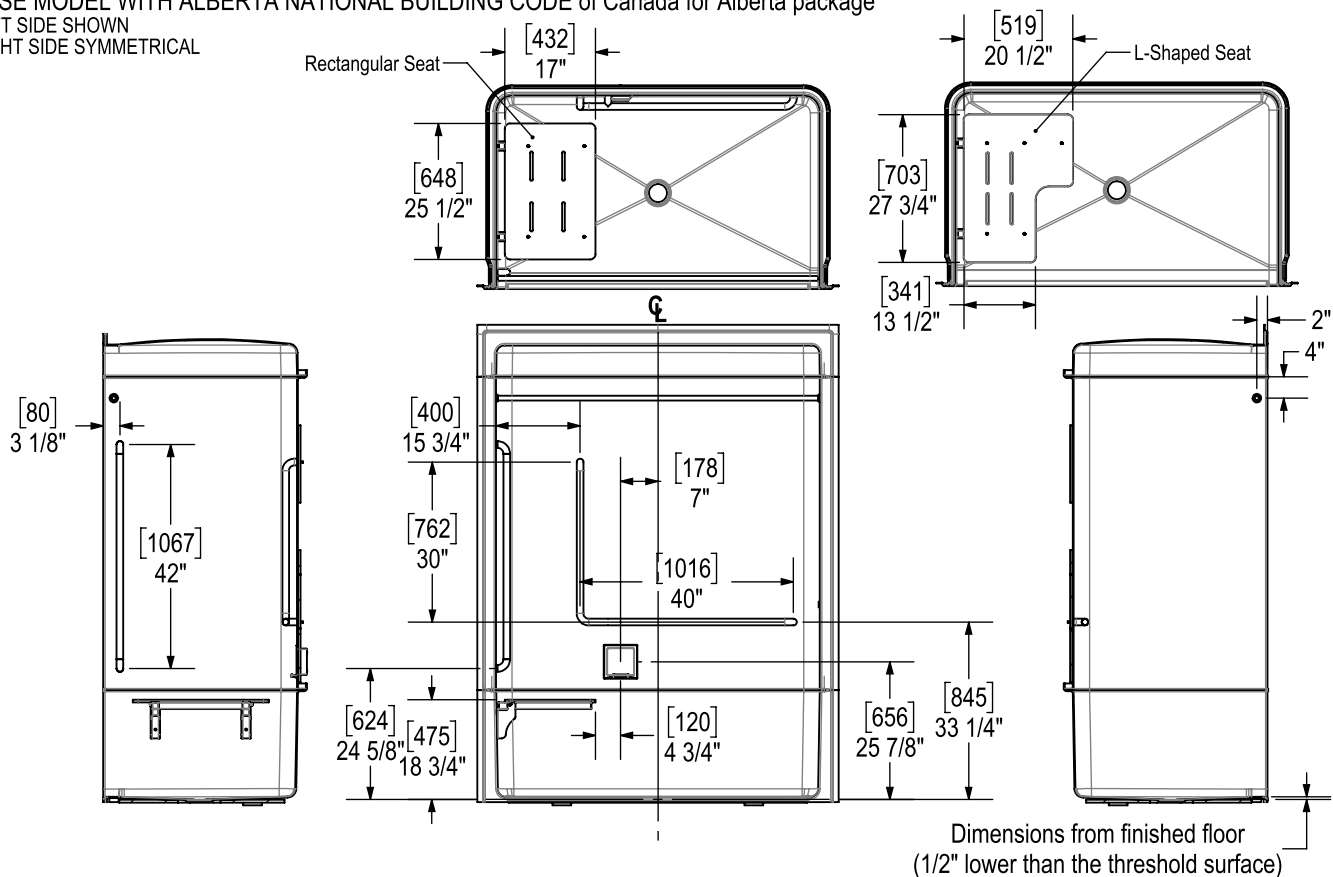


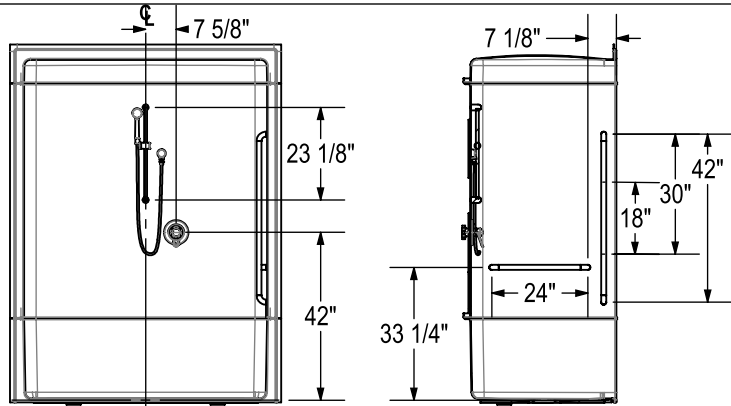
BASE MODEL WITH ALBERTA NATIONAL BUILDING CODE of Canada for Alberta package

LEFT SIDE SHOWN
RIGHT SIDE SYMMETRICAL



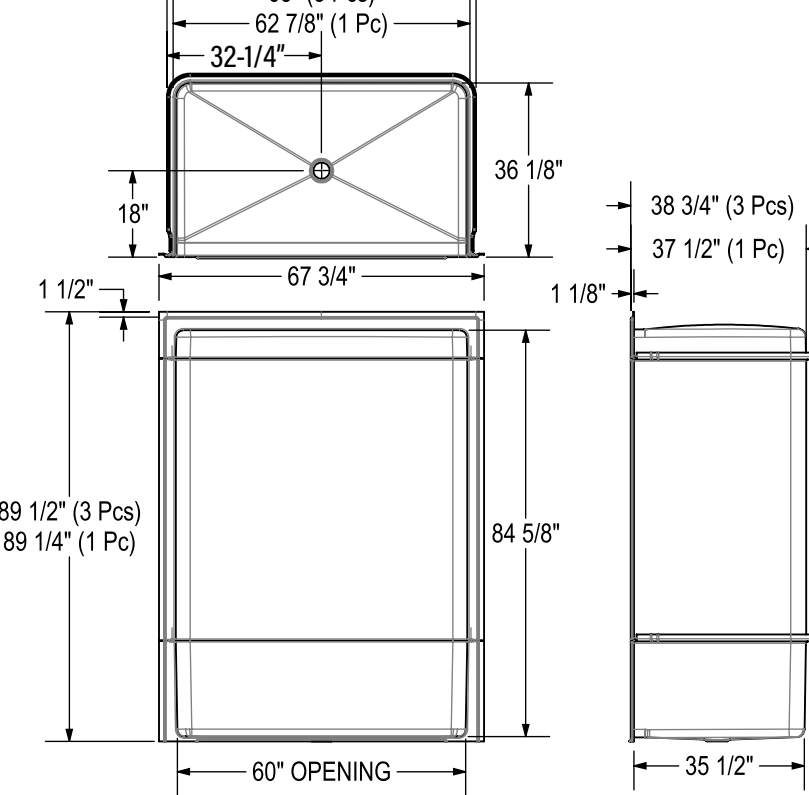
ADDITIONAL OPTIONS

- OPT. 18" Grab Bar Vertical (RH)
- OPT. 24" Grab Bar Horizontal (RH)
- OPT. 30" Grab Bar Vertical (RH)
- OPT. 42" Grab Bar Vertical (RH)
- OPT. 24" Sliding Bar & Valve
- OPT. Shower Drain (Brass or ABS)

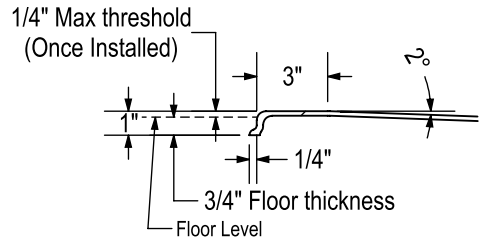


All dimensions are approximate. Structure measurements must be verified against the unit to ensure proper fit.

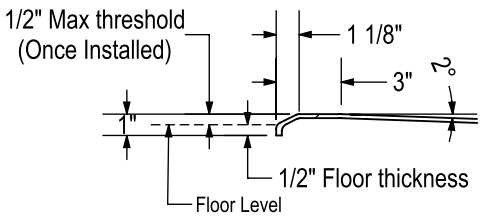
BASE MODEL



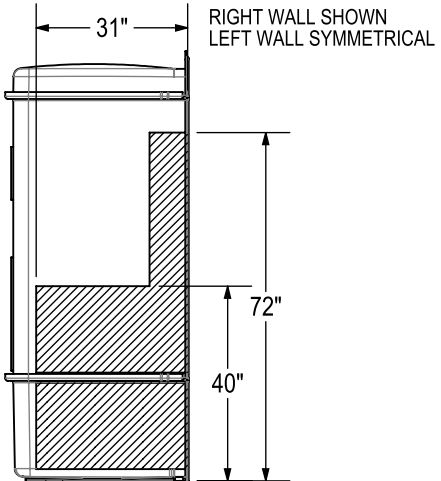
THRESHOLD DETAIL
TYPE VERTICAL



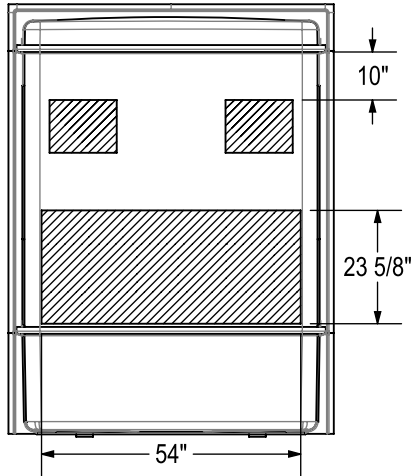
THRESHOLD DETAIL
TYPE BEVELED



REINFORCEMENT
BACKING



BACK WALL



All dimensions are approximate. Structure measurements must be verified against the unit to ensure proper fit.