



PROTECTIVE COVERINGS
FOR COMMERCIAL SPACES



Tangier in Bermuda Sand

SWANSTONE® COMMERCIAL SOLUTIONS WAINSCOTING

Swanstone® wall panels are perfect for virtually any high-traffic area. Made of reinforced, compression-molded solid surface material, they're resistant to cracks, gouges and dings. They're a great way to protect the lowest, most vulnerable part of the wall, while adding architectural interest and decorative detail at the same time.

Our Classic Panels are a great fit for high-pressure spaces in the food service, education and healthcare industries. Eliminate the inevitable damage from gurneys, mail bins, rolling carts or from other items.

Our Decorative Panels are designed for high-visibility locations that need a little extra flair, from lobby walls to elevator interiors.

THE PERFECT WAY TO PROTECT WALLS

- Save time, money, and hassle by eliminating wall damage
- Five times more impact resistant than other solid surfaces and cultured marble
- Resistant to cracks, gouges, and dings
- A range of colors and styles
- Easy to clean
- Renewable surface which can be repaired if necessary

PANEL SIZES

SS-3696SK (one skidded panel)

36"W x 96"H Classic Smooth Wall Panel

SS-4896SK (one skidded panel)

48"W x 96"H Classic Smooth Panel

SS-30145SK (one skidded panel)

30"W x 145"H Classic Smooth Wall Panel

DWP-3696

36"W x 96"H Decorative Wall Panel

See model numbers below for each style

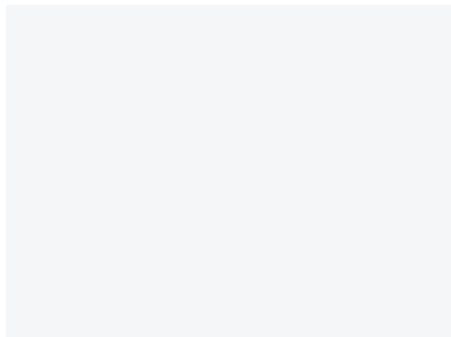
DWP-3606BB-1 (WB)

96"W x 36"H Wainscot Beadboard

Decorative Wall Panel

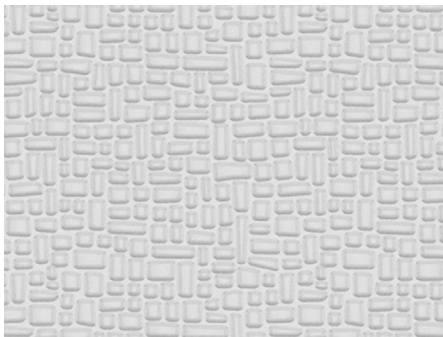


CLASSIC AND DECORATIVE WALL PANEL STYLES



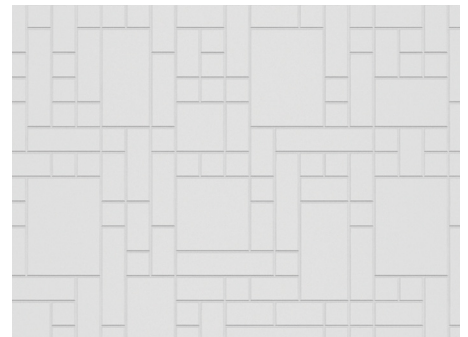
CLASSIC PANEL

Classic panels feature a smooth texture



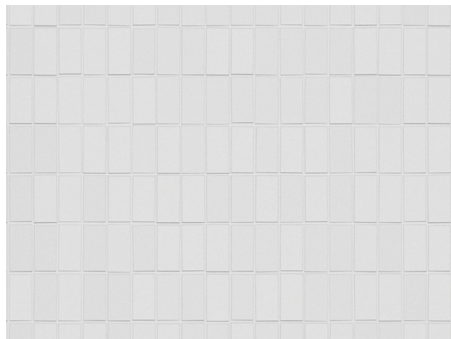
DWP-3696PB-1

Pebble (PB)



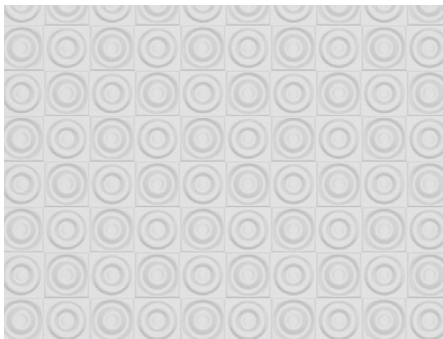
DWP-3696GO-1

Geometric (GO)



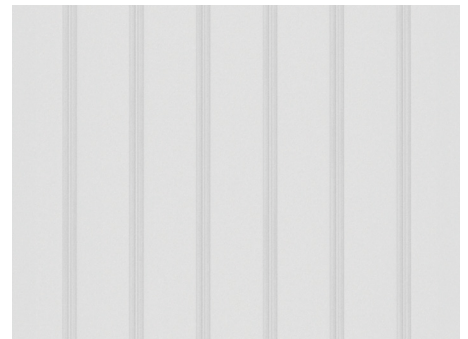
DWP-3696TN-1

Tangier (TN)



DWP-3696BA-1

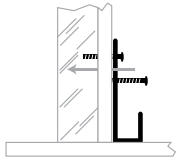
Barcelona (BA)



DWP-3696BB-1

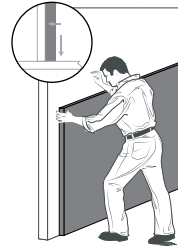
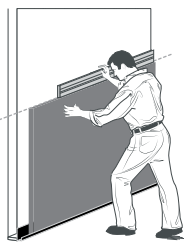
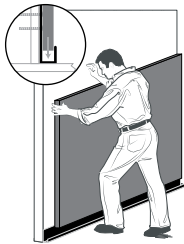
Beadboard (BB)

TWO METHODS FOR EASY INSTALLATION



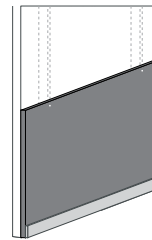
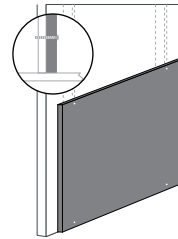
WITH J-CHANNEL

1. Screw J-channels into the wall at the floor.
2. Apply wall paneling adhesive to the back of the Swanstone® panel, set it in the J-channel and press it firmly to the wall. (You may use double-faced tape to hold the panel in place as it cures.)
3. Attach the trim molding.

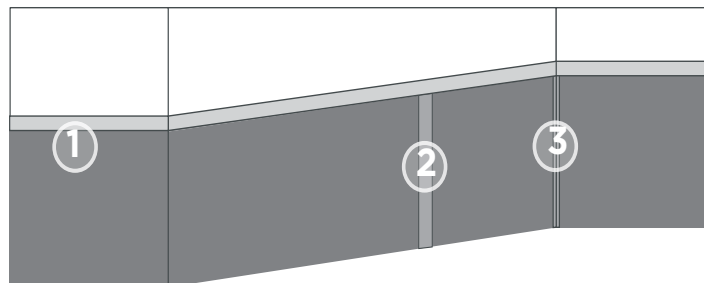


WITH COVE BASE

1. Apply wall paneling adhesive to the back of the Swanstone® panel. Set it on the floor, and press it firmly against the wall.
2. Screw the panel into the wall studs at the top and bottom.
3. Apply vinyl cove base along the bottom of the panel.



FINISH YOUR SWANSTONE® WAINSCOTING WITH ACCESSORIES



1. TRIM KITS

Finishes the upper wall panel edge. Available in 3.875" x 74" and 3.875" x 105".

TK-6072, TK-105

2. BATTEN STRIPS

Cover caulked seams so they look great and hold up for years. 72" x 4".

TK-0372

3. CORNER MOLDINGS (SET OF 2)

Covers inside corner seams. Available in 72" and 96" lengths.

CM-2072, CM-2096