

# QUAD-3322

Granite Undermount Large Single Ascend™ Bowl Kitchen Sink

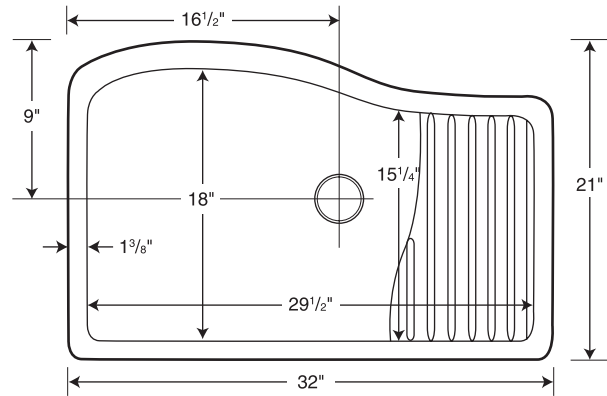
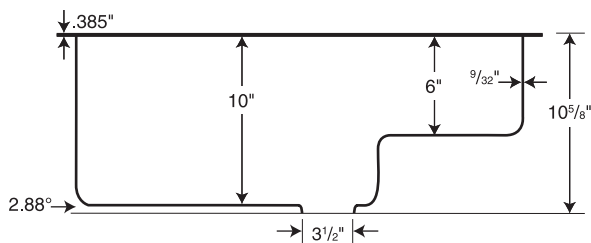


## Manufactured from Quartz

Recommended for high-use traffic areas and commercial surfaces.

## FEATURES

- Made with 80% quartz stone, only a diamond is harder.
- Virtually indestructible, will not damage from kitchen use.
- Standard sink size.
- Ideal for remodeling or new construction.
- Mounts under most countertop materials including granite, quartz, solid surface and tile.
- Warranty: Limited Lifetime - Residential  
Limited 10-year - Commercial



Capacity: 16 gallons

## SPECIFICATIONS

Model	Part	Nominal Dimensions	Ship Wt. Lb.	Ship FedEx	Carton Dims. In.	Cu. Ft.
QUAD-3322	QU03322AD	32" W x 21" D (813 mm x 533 mm)	49	FedEx	40 x 30 x 21	14.58

## COLORS

- Opal White (210)
- Espresso (170)
- Granito (076)
- Metallico (173)
- Nero (077)

## STANDARDS AND RATINGS

American National Standard Institute—  
ANSI Z124.6

International Association of Plumbing and  
Mechanical Officials (IAPMO) – listed

cUPC listed – Certified to CSA Standard  
B45 by IAPMO

Heat resistance to 392°F, 200°C

## MAINTENANCE AND CLEANING INFORMATION

Clean your Swan Granite Sink by using warm water and a soft clean cloth, or sponge. Non-abrasive liquid cleaners and detergents can also be used. Hard water, calcium and lime deposits can be removed with white vinegar on a paper towel and rinsing after 20 minutes. To restore luster and extend time between cleanings Granite Cleaner & Polish is recommended. Staining liquids, such as dyes and vegetable juices should be rinsed off as soon as possible. **Do not** use abrasive cleaners, metal-scouring pads, and bleach or alkali cleaners, such as ammonia.

## SUPPORT DOCUMENTS

Installation instructions available at  
[swanstone.com](http://swanstone.com).

Undermount clips sold separately. Faucet options are limited to available hole placement. Please contact your dealer for more information.