

VP6030CTSM2

60 x 30 x 79



PROFESSIONAL

FEATURES

- Modern, matte finish
- Smooth, 4-piece kit
- Easy Wedge & Lock installation
- Caulkless installation
- Integral soap shelves
- Meets FHA Code Compliant Requirement 6 for Backing Only
- Available in White only
- 15 Year residential limited warranty

COMPONENTS OF KIT

Above Floor Rough (AFR)

- VP6030CTML (Tub) or VP6030CTMR (Tub)
- VP6062CBW2 (Back Wall)
- VP2462CSW (Side Walls)

FHA Code Compliant

- VP6030CTML (Tub) or VP6030CTMR (Tub)
- VP6062CBW2A (Back Wall)
- VP2462CSWA (Side Walls)

VERITEK® PRO

Lightweight and durable, Veritek® Pro is produced with Swan Solid Surface, a proprietary SMC compound.

Veritek® Pro is the better bathroom solution and is a snap to install!

Available in the Following Offerings:

Depth	Width	Height Standard	Height AFR	Model Number			
				Standard	FHA	AFR	FHA & AFR
30	60	76	79	VP6030CTS2L/R	VP6030CTS2AL/R	VP6030CTSM2L/R	VP6030CTSM2AL/R

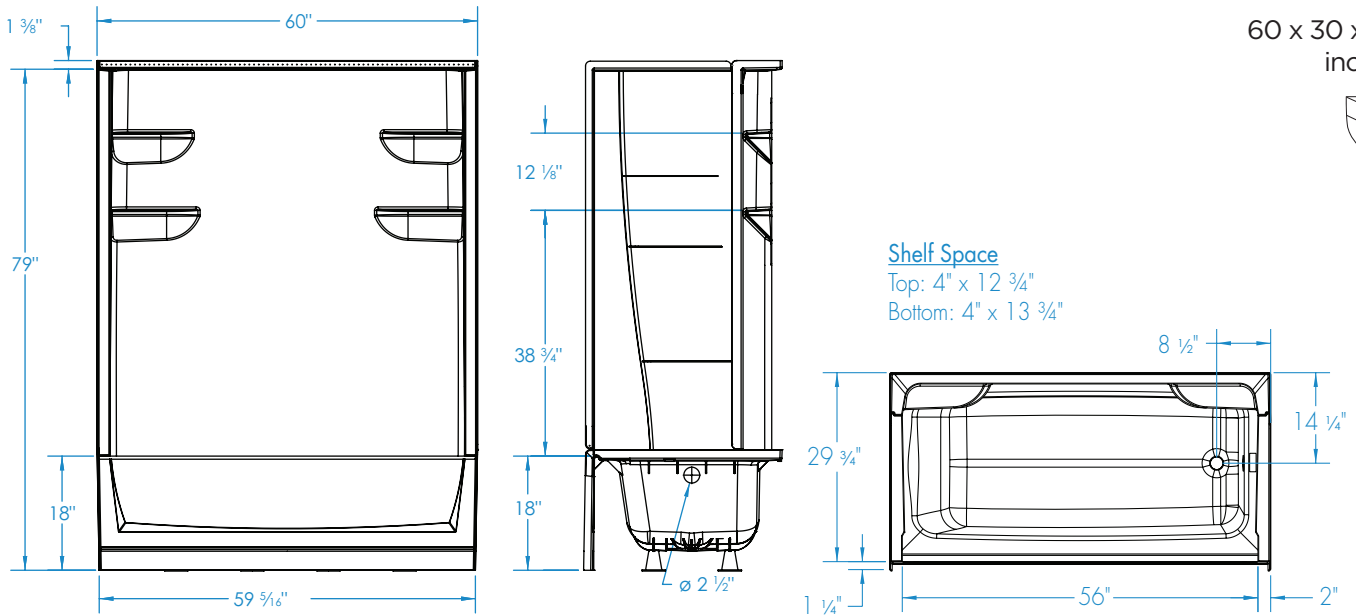
- Standard: Base model shower, tub, or tub shower offering
- FHA Code Compliant Requirement 6 for Backing (FHA): Backing is included for future grab bar installation
- Above Floor Rough (AFR): Clearance for drain placement, eliminating the need for drain relocation
- FHA Code Compliant (FHA) & Above Floor Rough (AFR): A combination kit for FHA & AFR

PACKAGED DIMENSIONS

- Tub: 62 ½ x 34 x 21 ¼
- Back Wall: 65 x 61 ½ x 8 ½
- Side Wall Set: 64 x 26 ½ x 5 ¼



# VP6030CTSM2

60 x 30 x 79  
inches


**FEATURES** Dimensional Tolerance  $\pm \frac{3}{16}$ ". Dimensions needed for site preparation should be measured from the unit. Manufacturer assumes no responsibility for preparatory work.

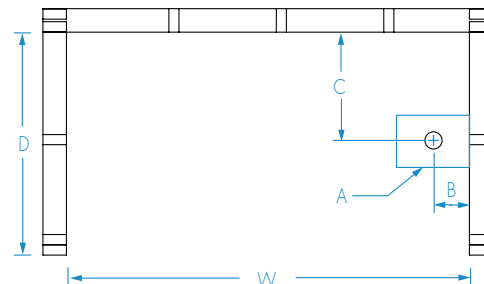
Type	Model #	Material	Height	Drain	Net Wt. lbs	Pkg. Wt. lbs
AFR Tub-Shower	VP6030CTSM2L/R	Swan Solid Surface	79	LH or RH	130	145
FHA and AFR Tub-Shower	VP6030CTSM2AL/R	Swan Solid Surface	79	LH or RH	160	175

## DIMENSIONS

Specifications	inches
<b>Width:</b> Overall / Net	60
<b>Depth:</b> Overall / Net	31 1/4 / 30
<b>Height:</b> Overall / Net	80 3/8 / 79
<b>Enclosure Opening</b>	56 3/4
<b>Skirt Height</b>	18
<b>Drain Rough-In</b> (from Back Wall)	14 1/4
<b>Drain Rough-In</b> (from Side Wall)	2 7/8
<b>Drain:</b> Diameter / Clearance	2 / 3 1/2

## FRAMING DIMENSIONS inches

Type	D Depth	W Width	H Height	A	B	C
Alcove	31 1/4	60	80 3/8	Box Out	2 7/8	14 1/4



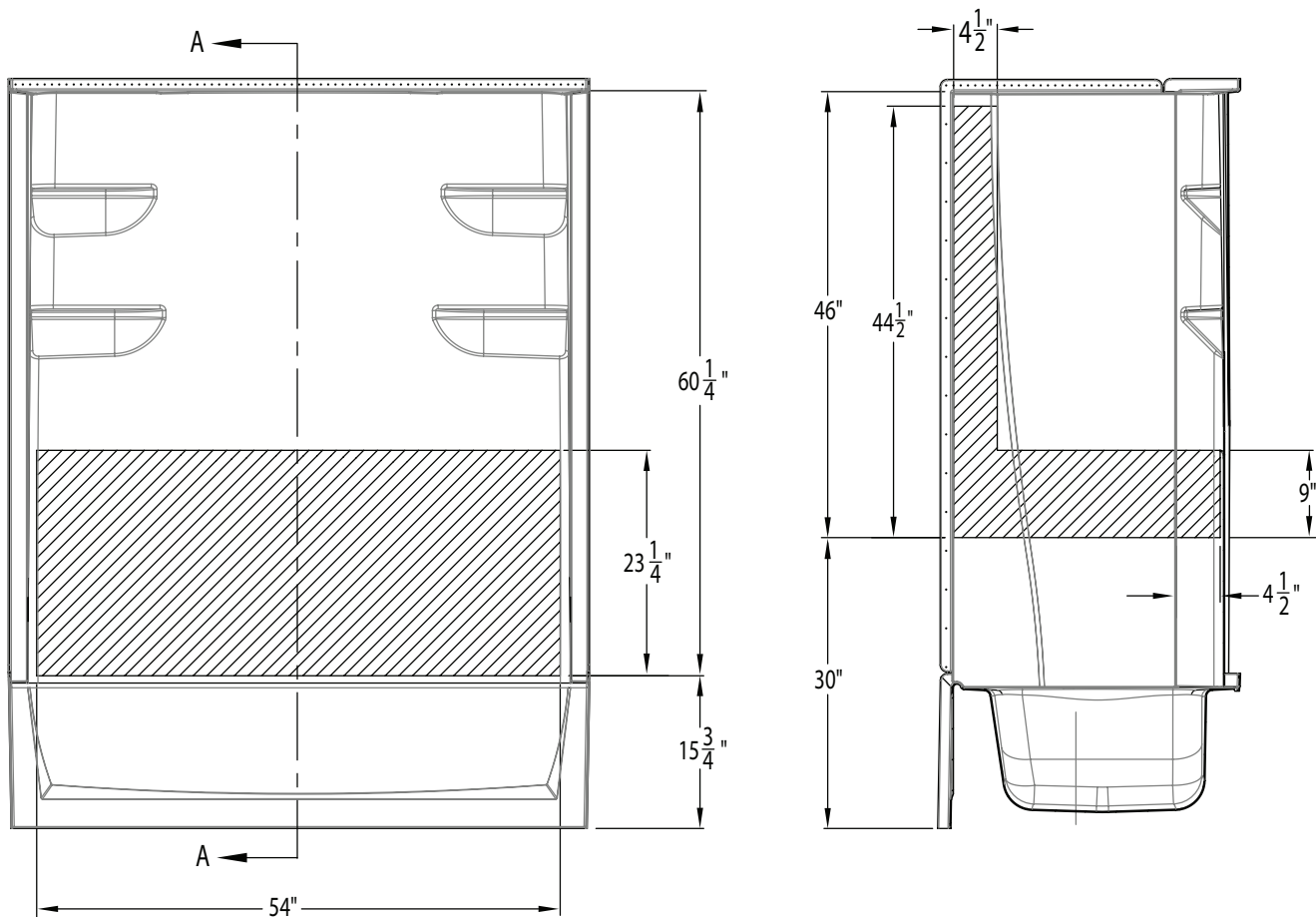
## SUMP DATA

Top of Drain to Bottom of Overflow	Capacity to Overflow gal	WIDTH @ centerline		DEPTH @ centerline	
		Top	Bottom	Top	Bottom
9 7/8	37	51 1/2	45 1/2	22 1/4	20 1/2



# VP6030CTSM2

60 x 30 x 79  
inches



 Backer Board

## Applicable Standard Models

VP6030CTS2L/R  
VP6030CTSM2L/R\*  
VP6030CTSMIN2L/R  
VP6030CTSM2L/R  
VP6032CTSMIN2L/R  
VP6032CTSM2L/R  
VP6036CTS2L/R  
VP6036CTSM2L/R  
VP6042CTS2L/R  
VP6042CTSM2L/R

## Applicable AFR Models

VP6030CTS2AL/R  
VP6030CTSM2AL/R  
VP6030CTSM2AL/R  
VP6030CTSM2AL/R  
VP6030CTSMN2AL/R  
VP6032CTSM2AL/R  
VP6032CTSMN2AL/R  
VP6036CTS2AL/R  
VP6036CTSM2AL/R  
VP6042CTS2AL/R  
VP6042CTSM2AL/R

\*Models meet ADA code when grab bars are installed to local ADA code standards.