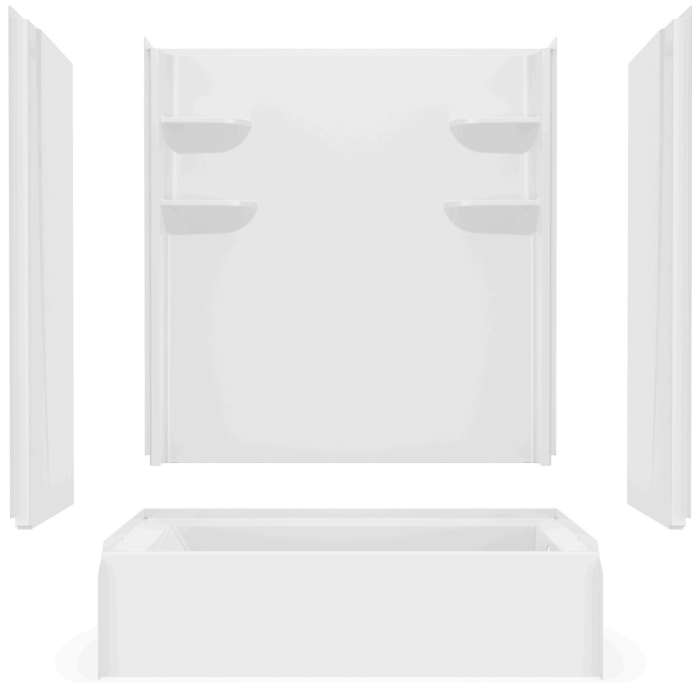


VP6030CTSMIN2

60 x 30 x 76



PROFESSIONAL

FEATURES

- Modern, matte finish
- Smooth, 4-piece kit
- Easy Wedge & Lock installation
- Caulkless installation
- Integral soap shelves
- Meets FHA Code Compliant Requirement 6 for Backing Only
- Available in White only
- 15 Year residential limited warranty

COMPONENTS OF KIT

Standard

- VP6030CTMINL (Tub) or VP6030CTMINR (Tub)
- VP6062CBW2 (Back Wall)
- VP2462CSW (Side Walls)

FHA Code Compliant

- VP6030CTMINL (Tub) or VP6030CTMINR (Tub)
- VP6062CBW2A (Back Wall)
- VP2462CSWA (Side Walls)

VERITEK® PRO

Lightweight and durable, Veritek® Pro is produced with Swan Solid Surface, a proprietary SMC compound.

Veritek® Pro is the better bathroom solution and is a snap to install!

Available in the Following Offerings:

Depth	Width	Height Standard	Height AFR	Model Number			
				Standard	FHA	AFR	FHA & AFR
30	60	76	79	VP6030CTSMIN2L/R	VP6030CTSMN2AL/R	VP6030CTSM2L/R	VP6030CTSM2AL/R

- Standard: Base model shower, tub, or tub shower offering
- FHA Code Compliant Requirement 6 for Backing (FHA): Backing is included for future grab bar installation
- Above Floor Rough (AFR): Clearance for drain placement, eliminating the need for drain relocation
- FHA Code Compliant (FHA) & Above Floor Rough (AFR): A combination kit for FHA & AFR

PACKAGED DIMENSIONS

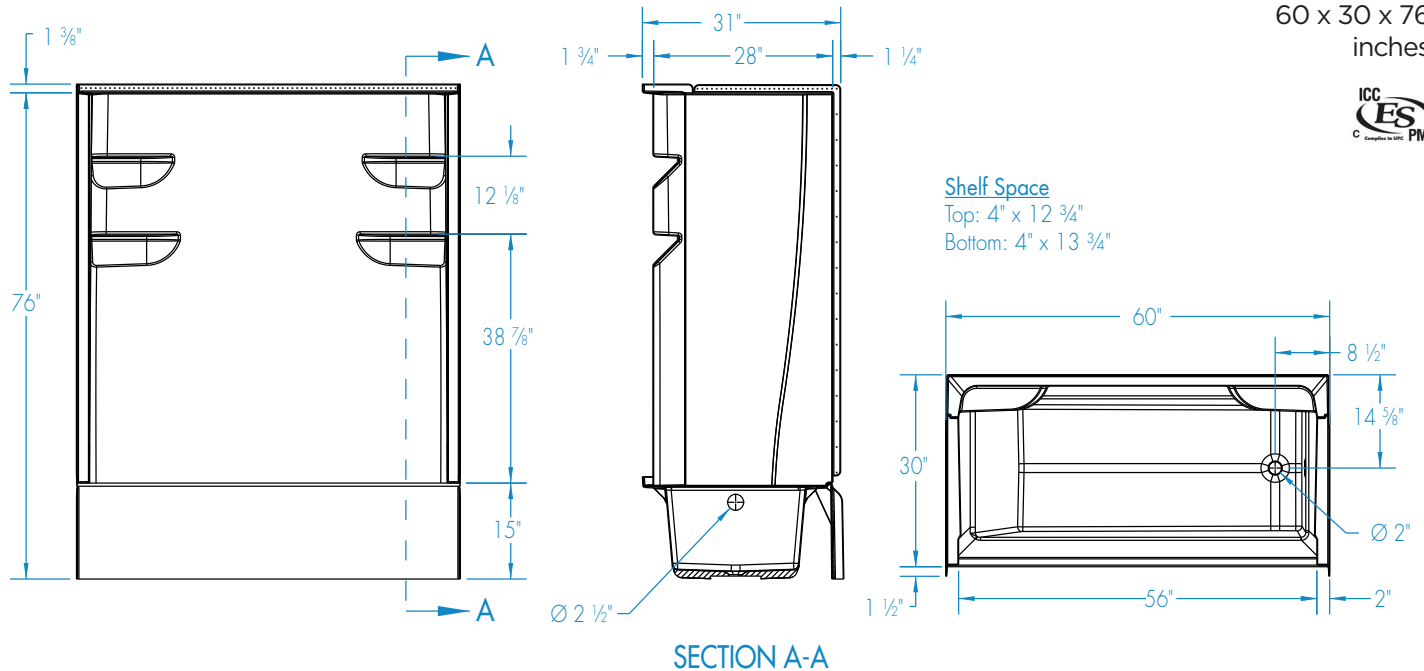
- Tub: 62 ½ x 34 x 17 ¾
- Back Wall: 65 x 61 ½ x 8 ½
- Side Wall Set: 64 x 26 ½ x 5 ¼



VP6030CTSMIN2

60 x 30 x 76
inches


Shelf Space
Top: 4" x 12 3/4"
Bottom: 4" x 13 3/4"



FEATURES Dimensional Tolerance $\pm \frac{3}{8}$ ". Dimensions needed for site preparation should be measured from the unit. Manufacturer assumes no responsibility for preparatory work.

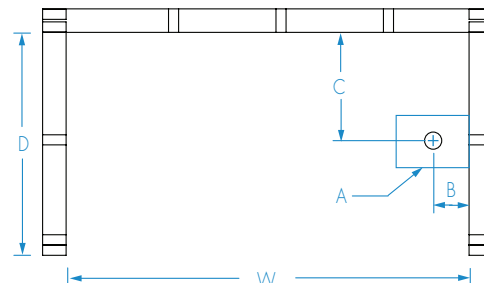
Type	Model #	Material	Height	Drain	Net Wt. lbs	Pkg. Wt. lbs
Standard Tub-Shower	VP6030CTSMIN2L/R	Swan Solid Surface	76	LH or RH	133	151
FHA Tub-Shower	VP6030CTSMN2AL/R	Swan Solid Surface	76	LH or RH	163	181

DIMENSIONS

Specifications	
Width: Overall / Net	60
Depth: Overall / Net	31 1/2 / 30
Height: Overall / Net	77 3/8 / 76
Enclosure Opening	56
Skirt Height	15
Drain Rough-In (from Back Wall)	14 5/8
Drain Rough-In (from Side Wall)	2 3/4
Drain: Diameter / Clearance	2 / 1/2

FRAMING DIMENSIONS inches

Type	D Depth	W Width	H Height	A	B	C
Alcove	31 1/2	60	77 3/8	Box Out	2 3/4	14 5/8



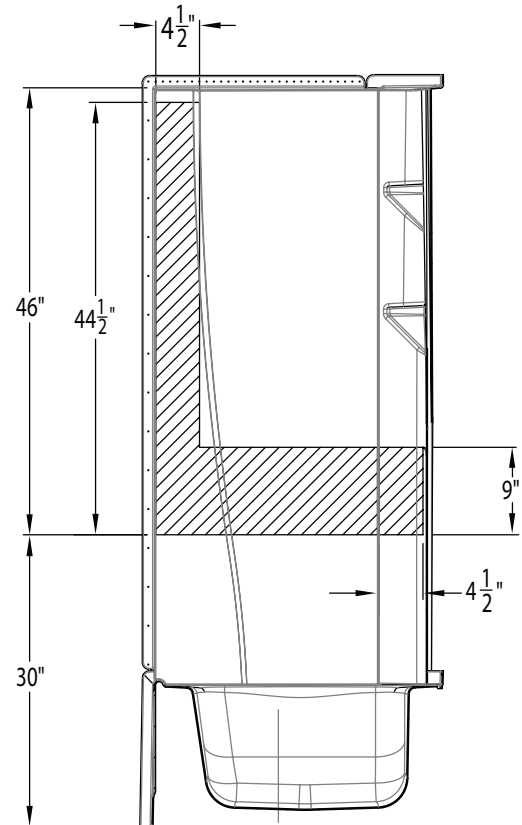
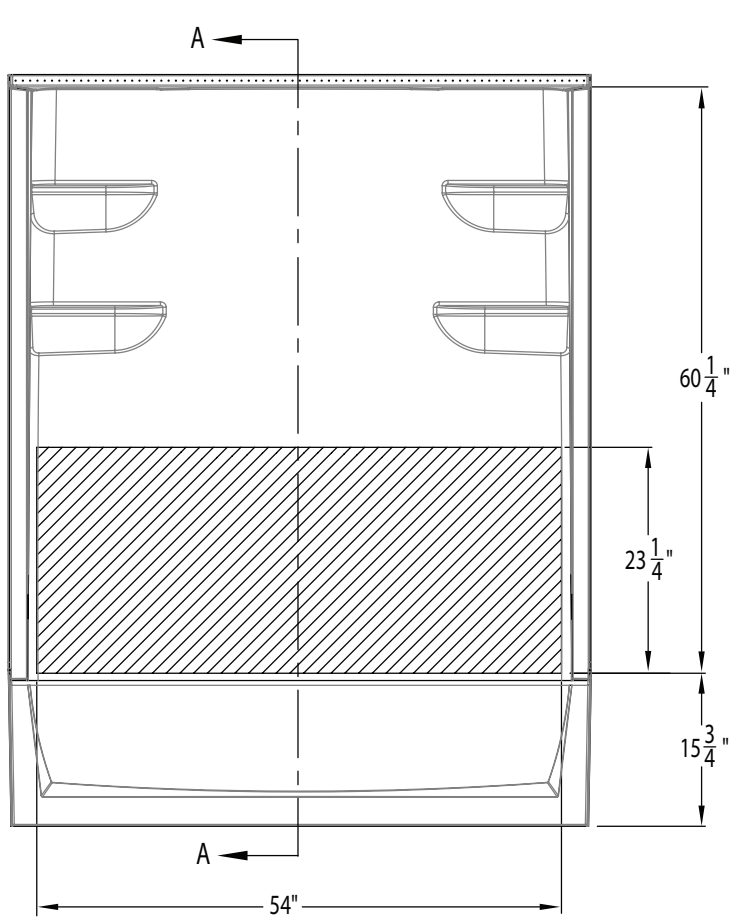
SUMP DATA

Top of Drain to Bottom of Overflow	Capacity to Overflow gal	WIDTH @ centerline		DEPTH @ centerline	
		Top	Bottom	Top	Bottom
9 1/2	36 1/8	51 5/8	44 1/2	21 5/8	19 5/8



VP6030CTSMIN2

60 x 30 x 76
inches



Applicable Standard Models

VP6030CTS2L/R
VP6030CTSM2L/R
VP6030CTSMIN2L/R*
VP6030CTSM2L/R
VP6032CTSMIN2L/R
VP6032CTSM2L/R
VP6036CTS2L/R
VP6036CTSM2L/R
VP6042CTS2L/R
VP6042CTSM2L/R

Applicable AFR Models

VP6030CTS2AL/R
VP6030CTSM2AL/R
VP6030CTSM2AL/R
VP6030CTSM2AL/R
VP6030CTSMN2AL/R
VP6032CTSM2AL/R
VP6032CTSMN2AL/R
VP6036CTS2AL/R
VP6036CTSM2AL/R
VP6042CTS2AL/R
VP6042CTSM2AL/R

*Models meet ADA code when grab bars are installed to local ADA code standards.