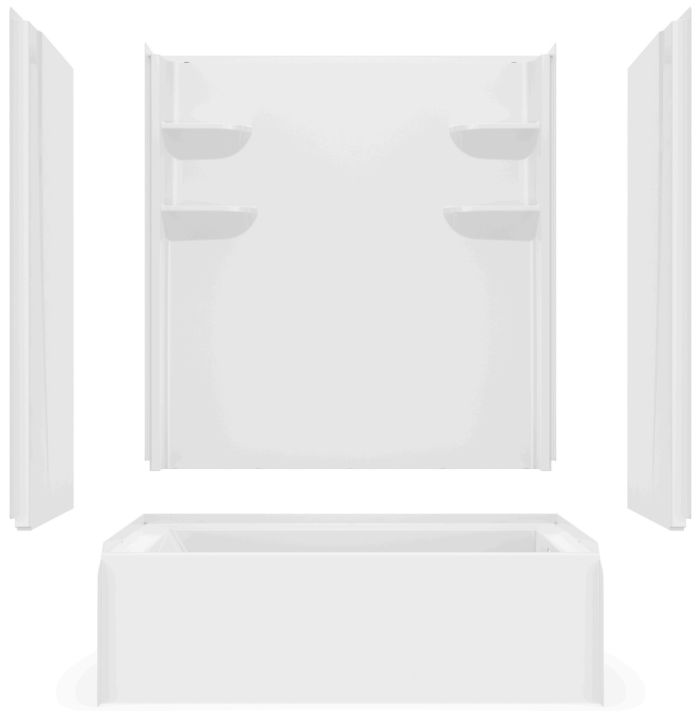


VP6030CTSM2

60 x 30 x 79



PROFESSIONAL

FEATURES

- Modern, matte finish
- Smooth, 4-piece kit
- Easy Wedge & Lock installation
- Caulkless installation
- Integral soap shelves
- Meets FHA Code Compliant Requirement 6 for Backing Only
- Available in White only
- 15 Year residential limited warranty

COMPONENTS OF KIT

Above Floor Rough (AFR)

- VP6030CTMML (Tub) or VP6030CTMMR (Tub)
- VP6062CBW2 (Back Wall)
- VP2462CSW (Side Walls)

FHA Code Compliant

- VP6030CTMML (Tub) or VP6030CTMMR (Tub)
- VP6062CWB2A (Back Wall)
- VP2462CSWA (Side Walls)

VERITEK® PRO

Lightweight and durable, Veritek® Pro is produced with Swan Solid Surface, a proprietary SMC compound.

Veritek® Pro is the better bathroom solution and is a snap to install!

Available in the Following Offerings:

| Depth | Width | Height   | Height | Model Number     |                  |                |                 |
|-------|-------|----------|--------|------------------|------------------|----------------|-----------------|
|       |       | Standard | AFR    | Standard         | FHA              | AFR            | FHA & AFR       |
| 30    | 60    | 76       | 79     | VP6030CTSMIN2L/R | VP6030CTSMN2AL/R | VP6030CTSM2L/R | VP6030CTSM2AL/R |

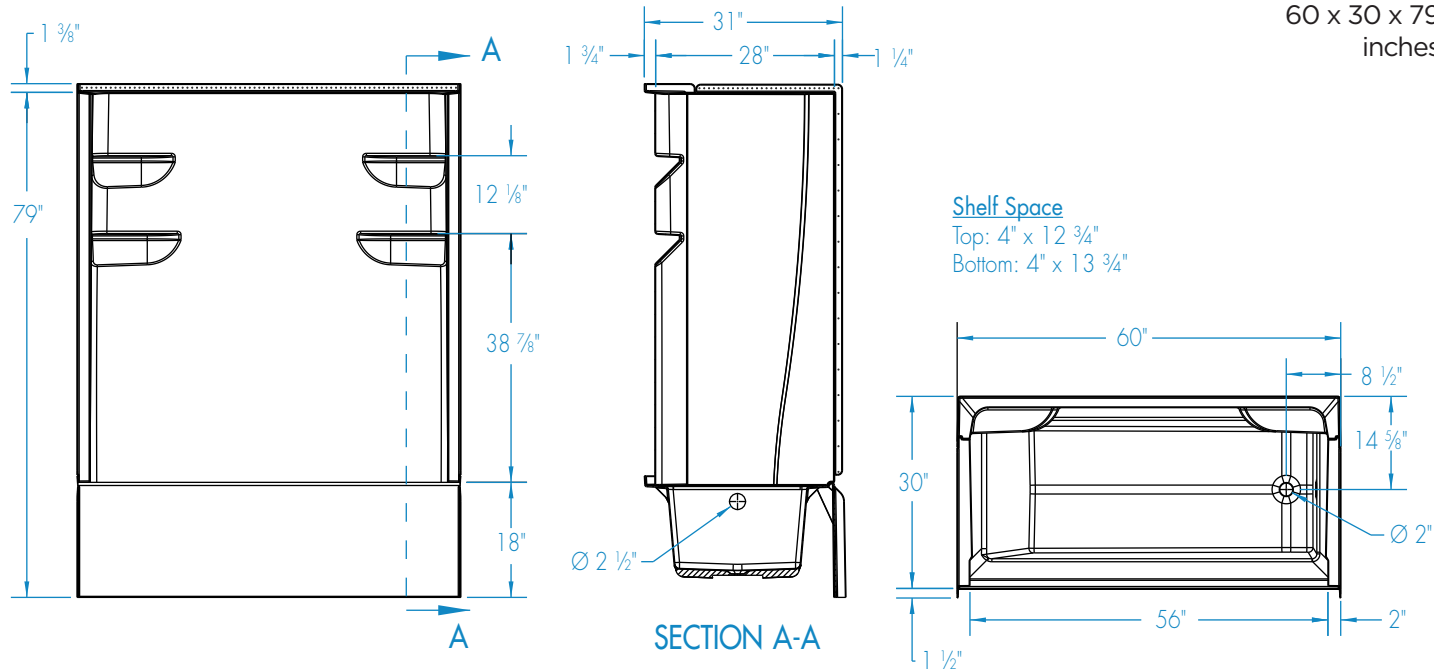
- Standard: Base model shower, tub, or tub shower offering
- FHA Code Compliant Requirement 6 for Backing (FHA): Backing is included for future grab bar installation
- Above Floor Rough (AFR): Clearance for drain placement, eliminating the need for drain relocation
- FHA Code Compliant (FHA) & Above Floor Rough (AFR): A combination kit for FHA & AFR

PACKAGED DIMENSIONS

- Tub: 62 ½ x 34 x 21 ¼
- Back Wall: 65 x 61 ½ x 8 ½
- Side Wall Set: 64 x 26 ½ x 5 ¼



# VP6030CTSM2

60 x 30 x 79  
inches


**FEATURES** Dimensional Tolerance  $\pm 3/8$ ". Dimensions needed for site preparation should be measured from the unit. Manufacturer assumes no responsibility for preparatory work.

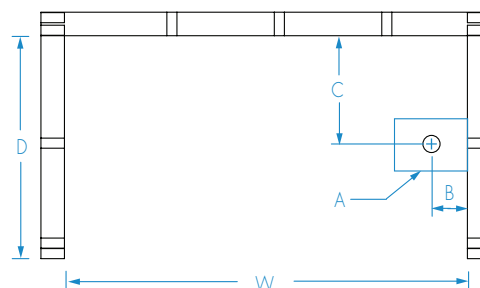
| Type                   | Model #         | Material           | Height | Drain    | Net Wt. lbs | Pkg. Wt. lbs |
|------------------------|-----------------|--------------------|--------|----------|-------------|--------------|
| AFR Tub-Shower         | VP6030CTSM2L/R  | Swan Solid Surface | 79     | LH or RH | 143         | 161          |
| FHA and AFR Tub-Shower | VP6030CTSM2AL/R | Swan Solid Surface | 79     | LH or RH | 173         | 191          |

## DIMENSIONS

| Specifications                         | inches      |
|--|-------------|
| <b>Width:</b> Overall / Net            | 60          |
| <b>Depth:</b> Overall / Net            | 31 1/2 / 30 |
| <b>Height:</b> Overall / Net           | 80 3/8 / 79 |
| <b>Enclosure Opening</b>               | 56          |
| <b>Skirt Height</b>                    | 18          |
| <b>Drain Rough-In</b> (from Back Wall) | 14 5/8      |
| <b>Drain Rough-In</b> (from Side Wall) | 2 3/4       |
| <b>Drain:</b> Diameter / Clearance     | 2 / 3 1/2   |

## FRAMING DIMENSIONS inches

| Type   | D Depth | W Width | H Height | A       | B     | C      |
|--------|---------|---------|----------|---------|-------|--------|
| Alcove | 31 1/2  | 60      | 77 3/8   | Box Out | 2 3/4 | 14 5/8 |

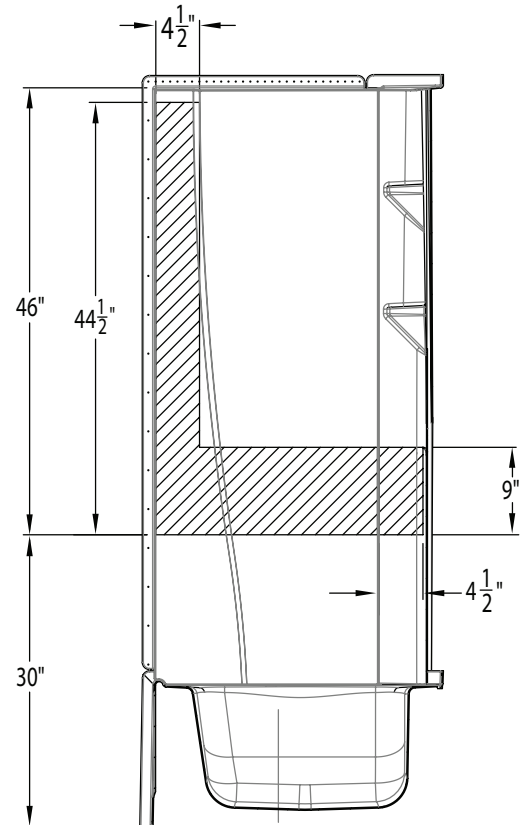
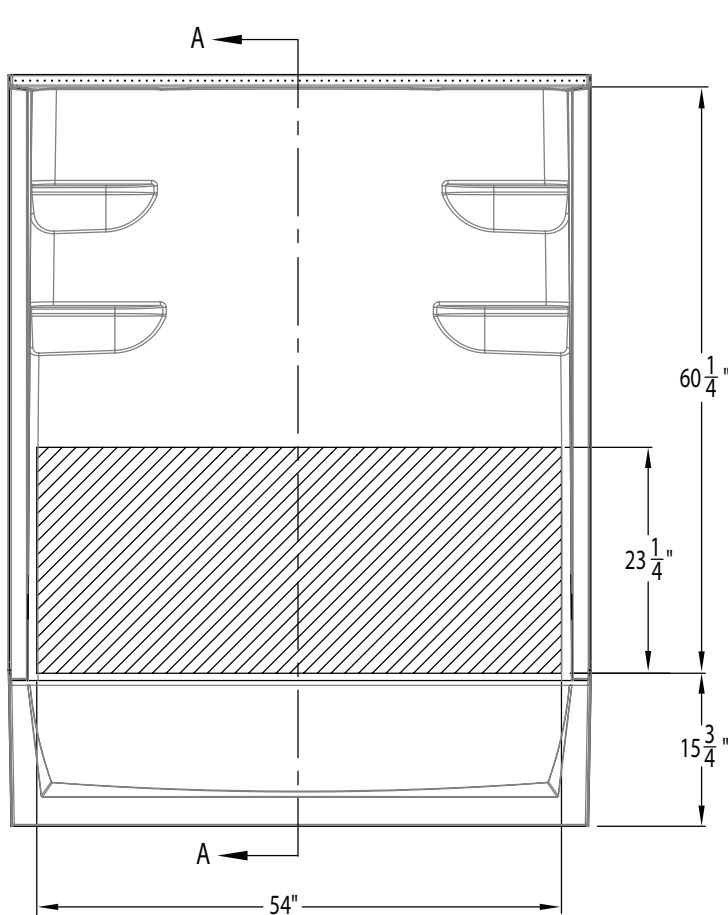


## SUMP DATA

| Top of Drain to<br>Bottom of Overflow | Capacity<br>to Overflow<br>gal | WIDTH @ centerline |        | DEPTH @ centerline |        |
|---------------------------------------|--------------------------------|--------------------|--------|--------------------|--------|
|                                       |                                | Top                | Bottom | Top                | Bottom |
| 9 1/2                                 | 36 1/8                         | 51 5/8             | 44 1/2 | 21 5/8             | 19 5/8 |

# VP6030CTSM2

60 x 30 x 79  
inches



## Applicable Standard Models

VP6030CTS2L/R  
VP6030CTSM2L/R  
VP6030CTSMIN2L/R  
VP6030CTSM2L/R\*  
VP6032CTSMIN2L/R  
VP6032CTSM2L/R  
VP6036CTS2L/R  
VP6036CTSM2L/R  
VP6042CTS2L/R  
VP6042CTSM2L/R

## Applicable AFR Models

VP6030CTS2AL/R  
VP6030CTSM2AL/R  
VP6030CTSM2AL/R  
VP6030CTSM2AL/R  
VP6030CTSMN2AL/R  
VP6032CTSM2AL/R  
VP6032CTSMN2AL/R  
VP6036CTS2AL/R  
VP6036CTSM2AL/R  
VP6042CTS2AL/R  
VP6042CTSM2AL/R

\*Models meet ADA code when grab bars are installed to local ADA code standards.