

VP6042CTS

60 x 42 x 79



VERITEK PRO

Lightweight and durable, Veritek Pro is produced with Swan Solid Surface, a proprietary SMC compound.

Veritek Pro is the better bathroom solution and is a snap to install!

Available in the Following Offerings:

Depth	Width	Height Standard	Height AFR	Model Number			
				Standard	AIP	AFR	AIP & AFR
42	60	79	82	VP6042CTSL/R	VP6042CTSAL/R	VP6042CTSML/R	VP6042CTSMAL/R

- **Standard:** Base model shower, tub, or tub shower offering
- **Aging In Place (AIP):** Reinforced shower or tub shower walls that allows for future grab bar installation
- **Above Floor Rough (AFR):** Clearance for drain placement, eliminating the need for drain relocation
- **Aging In Place (AIP) & Above Floor Rough (AFR):** A combination kit for AFR & AIP

PROFESSIONAL

FEATURES

- Modern, matte finish
- Smooth, 4-piece kit
- Easy Wedge & Lock installation
- Caulkless installation
- Integral soap shelves
- Available in White only
- 15 Year residential limited warranty

COMPONENTS OF KIT

Standard

- VP6042CTL (Tub) or VP6042CTR (Tub)
- VP6062CBW (Back Wall)
- VP3562CSW (Side Walls)

Aging In Place (AIP)

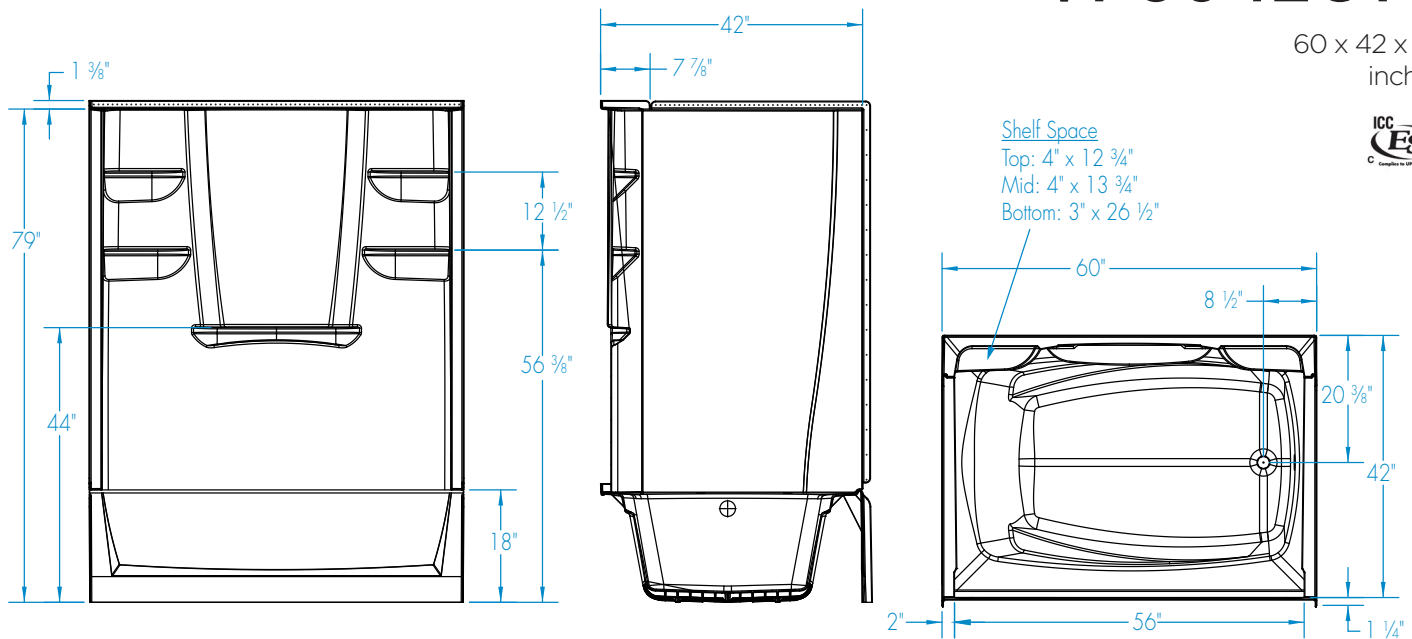
- VP6042CTL (Tub) or VP6042CTR (Tub)
- VP6062CBWA (Back Wall)
- VP3562CSWA (Side Walls)

PACKAGED DIMENSIONS

- Tub: 63 x 47 x 21 1/2
- Back Wall: 65 x 61 1/2 x 8 1/2
- Side Wall Set: 64 1/4 x 38 1/2 x 5



VP6042CTS

60 x 42 x 79
inches


FEATURES Dimensional Tolerance $\pm \frac{3}{8}$ ". Dimensions needed for site preparation should be measured from the unit. Manufacturer assumes no responsibility for preparatory work.

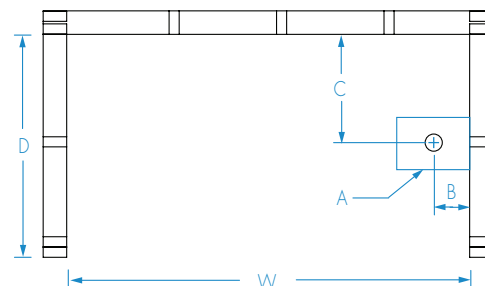
Type	Model #	Material	Height	Drain	Net Wt. lbs	Pkg. Wt. lbs
Standard Tub-Shower	VP6042CTSL/R	Swan Solid Surface	79	LH or RH	172	187
AIP Tub-Shower	VP6042CTSAL/R	Swan Solid Surface	79	LH or RH	202	217

DIMENSIONS

Specifications	inches
Width: Overall / Net	60
Depth: Overall / Net	43 1/4 / 42
Height: Overall / Net	80 3/8 / 79
Enclosure Opening	56
Skirt Height	18
Drain Rough-In (from Back Wall)	20 3/8
Drain Rough-In (from Side Wall)	2
Drain: Diameter / Clearance	2 / 1/2

FRAMING DIMENSIONS

Type	D Depth	W Width	H Height	A	B	C
Alcove	43 1/4	60	80 3/8	Box Out	2	20 3/8



SUMP DATA

Top of Drain to Bottom of Overflow	Capacity to Overflow gal	WIDTH @ centerline		DEPTH @ centerline	
		Top	Bottom	Top	Bottom
12 5/8	65	51 3/8	43 1/2	33 3/8	26 3/4

