

VP6032CTSM2

60 x 32 x 82



PROFESSIONAL

FEATURES

- Modern, matte finish
- Smooth, 4-piece kit
- Easy Wedge & Lock installation
- Caulkless installation
- Integral soap shelves
- Meets FHA Code Compliant Requirement 6 for Backing Only
- Available in White only
- 15 Year residential limited warranty

COMPONENTS OF KIT

Above Floor Rough (AFR)

- VP6032CTMML (Base) or VP6032CTMMR (Base)
- VP6062CBW2 (Back Wall)
- VP2562CSW (Side Walls)

FHA Code Compliant

- VP6032CTMML (Tub) or VP6032CTMMR (Tub)
- VP6062CBW2A (Back Wall)
- VP2562CSWA (Side Walls)

VERITEK® PRO

Lightweight and durable, Veritek® Pro is produced with Swan Solid Surface, a proprietary SMC compound.

Veritek® Pro is the better bathroom solution and is a snap to install!

Available in the Following Offerings:

Depth	Width	Height Standard	Height AFR	Model Number			
				Standard	FHA	AFR	FHA & AFR
32	60	79	82	VP6032CTSMIN2L/R	VP6032CTSMN2AL/R	VP6032CTSM2L/R	VP6032CTSM2AL/R

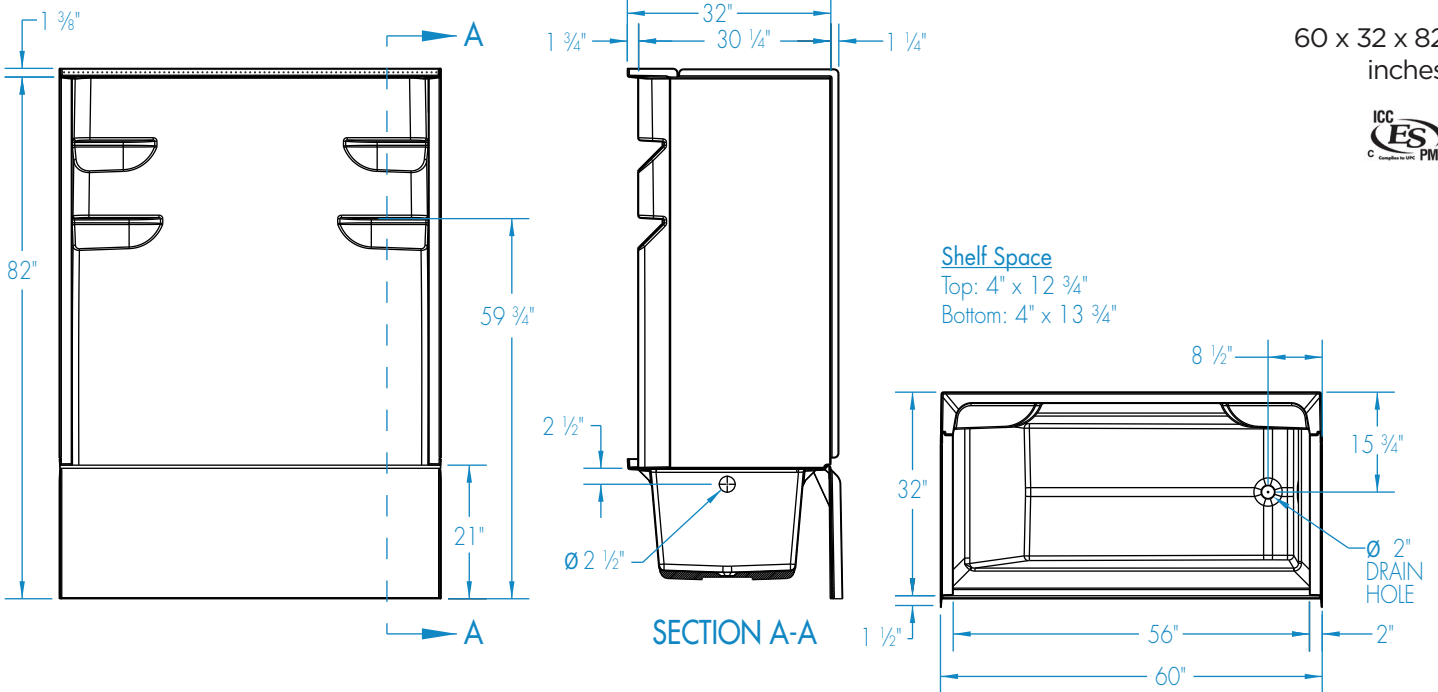
- Standard: Base model shower, tub, or tub shower offering
- FHA Code Compliant Requirement 6 for Backing (FHA): Backing is included for future grab bar installation
- Above Floor Rough (AFR): Clearance for drain placement, eliminating the need for drain relocation
- FHA Code Compliant (FHA) & Above Floor Rough (AFR): A combination kit for FHA & AFR

PACKAGED DIMENSIONS

- Tub: 63 x 36 ½ x 24 ½
- Back Wall: 65 x 61 ½ x 8 ½
- Side Wall Set: 64 ¼ x 28 ½ x 5



VP6032CTSM2

60 x 32 x 82
inches


FEATURES Dimensional Tolerance $\pm 3/8"$. Dimensions needed for site preparation should be measured from the unit. Manufacturer assumes no responsibility for preparatory work.

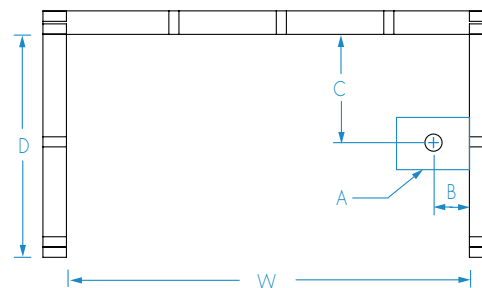
Type	Model #	Material	Height	Drain	Net Wt. lbs	Pkg. Wt. lbs
AFR Tub-Shower	VP6032CTSM2L/R	Swan Solid Surface	82	LH or RH	145	163
FHA and AFR Tub-Shower	VP6032CTSM2AL/R	Swan Solid Surface	82	LH or RH	175	193

DIMENSIONS

Specifications	inches
Width: Overall / Net	60
Depth: Overall / Net	33 1/2 / 32
Height: Overall / Net	83 3/8 / 82
Enclosure Opening	56
Skirt Height	21
Drain Rough-In (from Back Wall)	15 3/4
Drain Rough-In (from Side Wall)	2 3/4
Drain: Diameter / Clearance	2 / 3 1/2

FRAMING DIMENSIONS inches

Type	D Depth	W Width	H Height	A	B	C
Alcove	33 1/2	60	83 3/8	Box Out	2 3/4	15 3/4



SUMP DATA

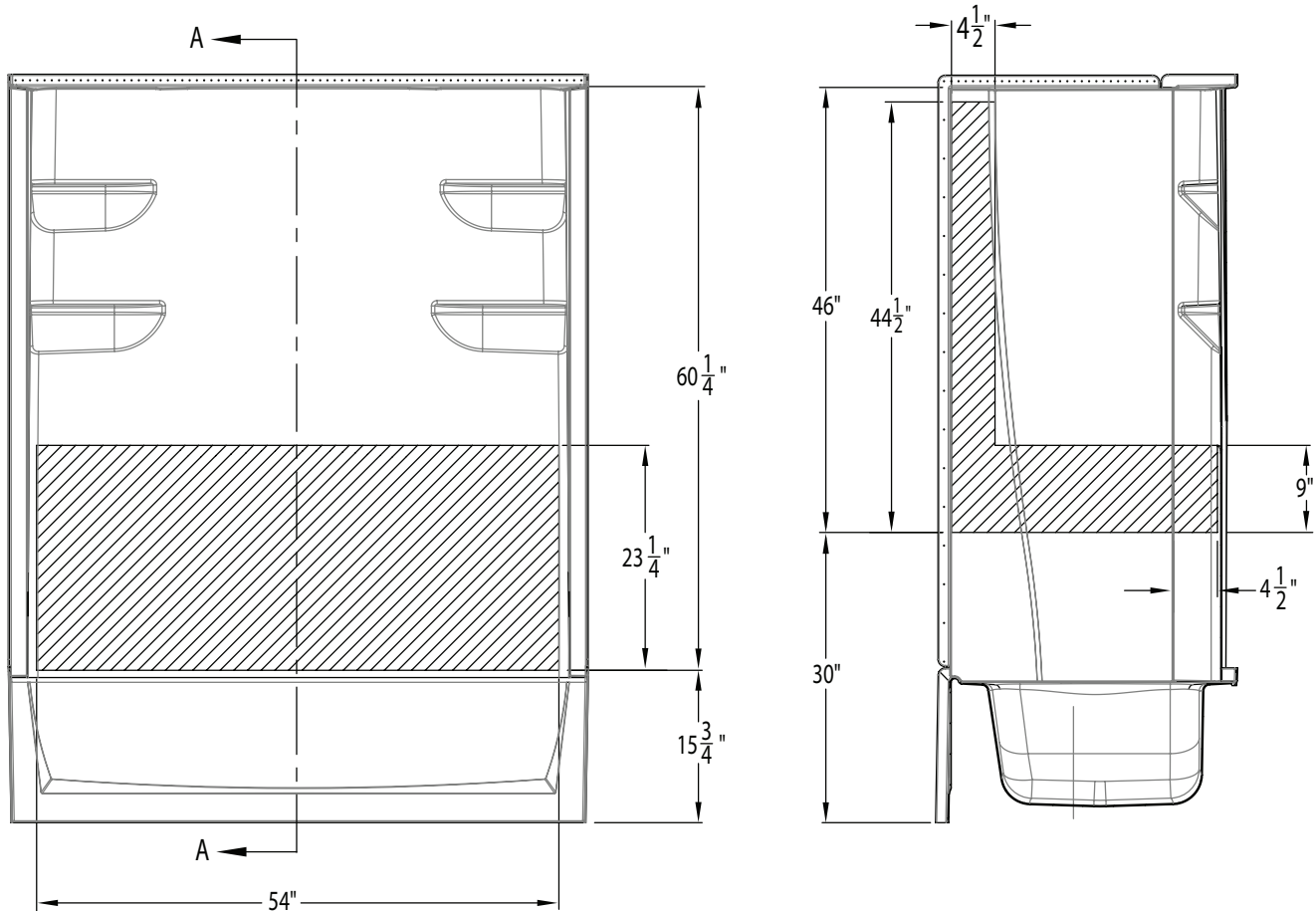
Top of Drain to Bottom of Overflow	Capacity to Overflow gal	WIDTH @ centerline		DEPTH @ centerline	
		Top	Bottom	Top	Bottom
12 5/8	52 3/8	51 5/8	42 1/8	23 7/8	21 3/8

Rev. 04.11.25



VP6032CTSM2

60 x 32 x 82
inches



 Backer Board

Applicable Standard Models

VP6030CTS2L/R
VP6030CTSM2L/R
VP6030CTSMIN2L/R
VP6030CTSM2L/R
VP6032CTSMIN2L/R
VP6032CTSM2L/R*
VP6036CTS2L/R
VP6036CTSM2L/R
VP6042CTS2L/R
VP6042CTSM2L/R

Applicable AFR Models

VP6030CTS2AL/R
VP6030CTSM2AL/R
VP6030CTSM2AL/R
VP6030CTSM2AL/R
VP6030CTSMN2AL/R
VP6032CTSM2AL/R
VP6032CTSMN2AL/R
VP6036CTS2AL/R
VP6036CTSM2AL/R
VP6042CTS2AL/R
VP6042CTSM2AL/R

*Models meet ADA code when grab bars are installed to local ADA code standards.