

VP6032CTSMIN2

60 x 32 x 79



PROFESSIONAL

FEATURES

- Modern, matte finish
- Smooth, 4-piece kit
- Easy Wedge & Lock installation
- Caulkless installation
- Integral soap shelves
- Meets FHA Code Compliant Requirement 6 for Backing Only
- Available in White only
- 15 Year residential limited warranty

COMPONENTS OF KIT

Standard

- VP6032CTMINL (Tub) or VP6032CTMINR (Tub)
- VP6062CBW2 (Back Wall)
- VP2562CSW (Side Walls)

FHA Code Compliant

- VP6032CTMINL (Tub) or VP6032CTMINR (Tub)
- VP6062CBW2A (Back Wall)
- VP2562CSWA (Side Walls)

VERITEK® PRO

Lightweight and durable, Veritek® Pro is produced with Swan Solid Surface, a proprietary SMC compound.

Veritek® Pro is the better bathroom solution and is a snap to install!

Available in the Following Offerings:

| Depth | Width | Height Standard | Height AFR | Model Number | | | |
|-------|-------|--------------------|---------------|------------------|------------------|----------------|-----------------|
| | | | | Standard | FHA | AFR | FHA & AFR |
| 32 | 60 | 79 | 82 | VP6032CTSMIN2L/R | VP6032CTSMN2AL/R | VP6032CTSM2L/R | VP6032CTSM2AL/R |

- Standard: Base model shower, tub, or tub shower offering
- FHA Code Compliant Requirement 6 for Backing (FHA): Backing is included for future grab bar installation
- Above Floor Rough (AFR): Clearance for drain placement, eliminating the need for drain relocation
- FHA Code Compliant (FHA) & Above Floor Rough (AFR): A combination kit for FHA & AFR

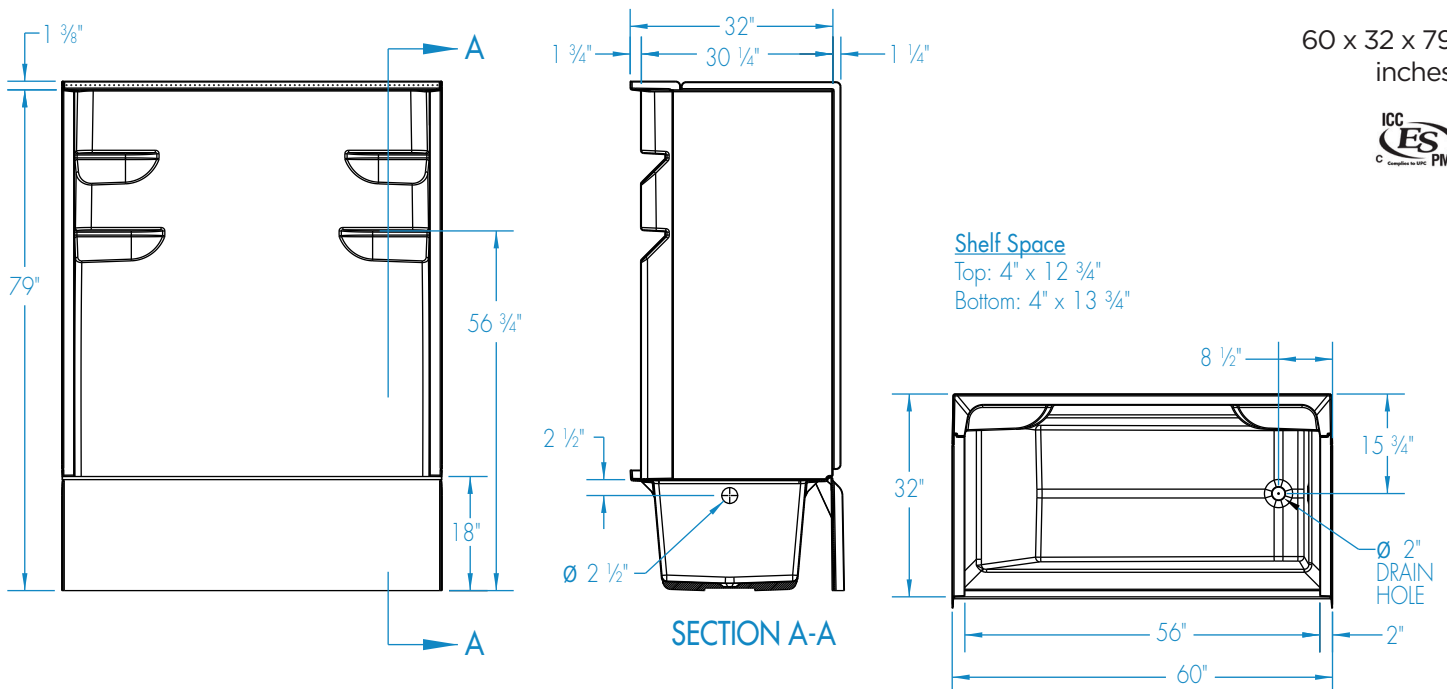
PACKAGED DIMENSIONS

- Tub: 63 x 36 1/2 x 21
- Back Wall: 65 x 61 1/2 x 8 1/2
- Side Wall Set: 64 1/4 x 28 1/2 x 5



VP6032CTSMIN2

60 x 32 x 79
inches



FEATURES Dimensional Tolerance $\pm 3/8"$. Dimensions needed for site preparation should be measured from the unit. Manufacturer assumes no responsibility for preparatory work.

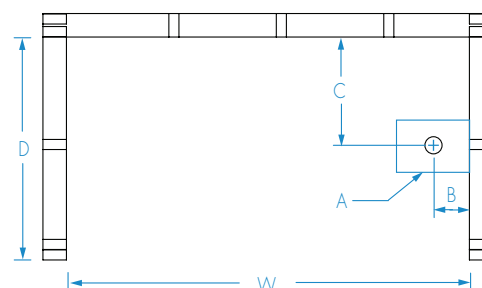
| Type | Model # | Material | Height | Drain | Net Wt. lbs | Pkg. Wt. lbs |
|---------------------|------------------|--------------------|--------|----------|----------------|-----------------|
| Standard Tub-Shower | VP6032CTSMIN2L/R | Swan Solid Surface | 79 | LH or RH | 135 | 153 |
| FHA Tub-Shower | VP6032CTSMN2AL/R | Swan Solid Surface | 79 | LH or RH | 165 | 183 |

DIMENSIONS

| Specific tions | inches |
|--|-----------|
| Width: Overall / Net | 60 |
| Depth: Overall / Net | 33 ½ / 32 |
| Height: Overall / Net | 80 ¾ / 79 |
| Enclosure Opening | 56 |
| Skirt Height | 18 |
| Drain Rough-In (from Back Wall) | 15 ¾ |
| Drain Rough-In (from Side Wall) | 2 ¾ |
| Drain: Diameter / Clearance | 2 / ½ |

FRAMING DIMENSIONS inches

| Type | D Depth | W Width | H Height | A | B | C |
|--------|------------|------------|-------------|---------|-----|------|
| Alcove | 33 ½ | 60 | 80 ¾ | Box Out | 2 ¾ | 15 ¾ |



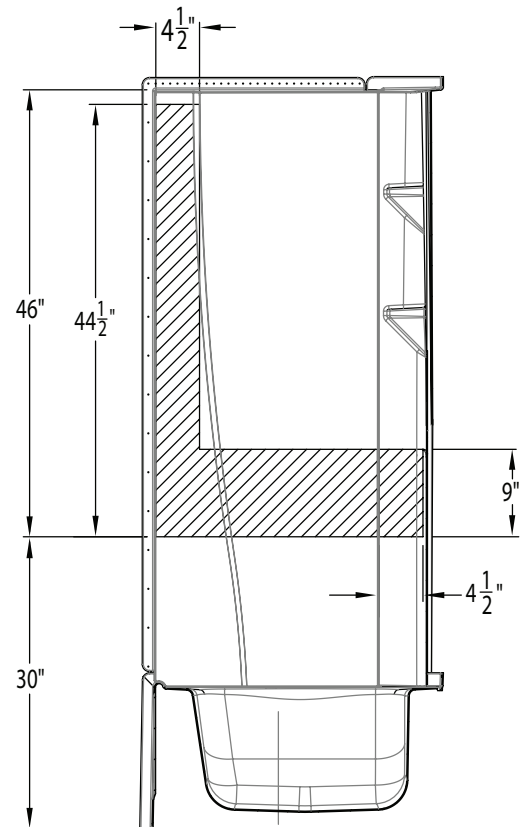
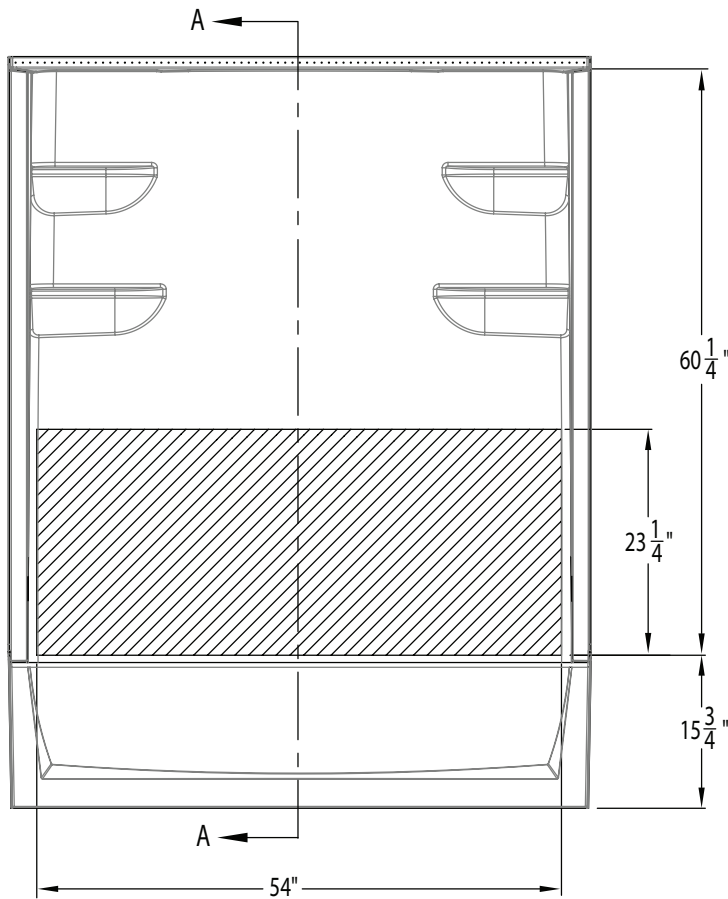
SUMP DATA

| Top of Drain to Bottom of Overfl w | Capacity to Overfl w gal | WIDTH @ centerline | | DEPTH @ centerline | |
|---------------------------------------|--------------------------------|--------------------|--------|--------------------|--------|
| | | Top | Bottom | Top | Bottom |
| 12 5/8 | 52 3/4 | 51 5/8 | 42 1/8 | 23 7/8 | 21 3/8 |

Rev. 04.10.25

VP6032CTSMIN2

60 x 32 x 79
inches



Applicable Standard Models

VP6030CTS2L/R
VP6030CTSM2L/R
VP6030CTSMIN2L/R
VP6030CTSM2L/R
VP6032CTSMIN2L/R*
VP6032CTSM2L/R
VP6036CTS2L/R
VP6036CTSM2L/R
VP6042CTS2L/R
VP6042CTSM2L/R

Applicable AFR Models

VP6030CTS2AL/R
VP6030CTSM2AL/R
VP6030CTSM2AL/R
VP6030CTSM2AL/R
VP6030CTSMN2AL/R
VP6032CTSM2AL/R
VP6032CTSMN2AL/R
VP6036CTS2AL/R
VP6036CTSM2AL/R
VP6042CTS2AL/R
VP6042CTSM2AL/R

*Models meet ADA code when grab bars are installed to local ADA code standards.