



ACCESSIBLE BATH PRODUCTS

WHY CHOOSE SWANSTONE® ON YOUR NEXT PROJECT?

The Swan line of accessible bath products is designed specifically for function, convenience and safety. Our solutions eliminate barriers, providing easy access and independence for users. Many of our bath solutions are versatile, providing you the ability to mix and match products, colors and accessories for the right fit and budget for your space.



EASY TO CLEAN: Easily wipe away dirt and grime with most household cleaners. For tough stains, use a powdered, abrasive cleaner and a nylon or plastic scrubbing pad.



HEAT & CHEMICAL RESISTANT: Solid surface resists heat up to 450° and will withstand exposure to even the harshest chemicals.



INDUSTRY LEADING WARRANTY: Swanstone® products offer a limited lifetime residential warranty and a 30-year commercial warranty.



ANTIMICROBIAL: Walls are non-porous, with no surface coating to scratch or wear away, forming a natural antimicrobial surface that will not breed bacteria.



DURABLE: Swanstone® has the best impact resistance in the industry - up to ten times stronger! Swanstone® will stand up to heavy duty abuse far beyond daily use.



ENVIRONMENTALLY FRIENDLY: Swanstone® products are GREENGUARD GOLD certified by UL Environment. This certification indicates that our product meets some of the world's most rigorous and comprehensive standards for low emissions of volatile organic compounds (VOCs) into indoor air.

EDUCATION | MULTIFAMILY | HEALTHCARE | PUBLIC HOUSING | ASSISTED LIVING | HOSPITALITY | INSTITUTIONAL



STF-3838 Performix Shower Pan in White (010),
Traditional SubwayTile Pattern Wall Kit in Ash Gray (203)

WE'VE MADE ACCESSIBLE DESIGN SIMPLE

When looking for ADA or Accessible bath products, Swan offers the right solution to fit your needs. Your new floor decision will be based on your new or renovation ADA requirements. Choose your floor based on area dimensions and then choose a corresponding shower wall kit.



The Swanstone® Performix Transfer model is designed to facilitate the transfer from a wheelchair onto a shower seat. This model meets ADA accessibility requirements in existing and new bathing facilities.



ADA CODE COMPLIANT DESIGN

STF-3838

38" X 38" SWANSTONE® PERFORMIX TRANSFER SHOWER FLOOR

Interior Dimensions: 36" x 36"
Available in the Swanstone® standard color offering.
Sample colors on page 9

COMPATIBLE WITH SWANSTONE WALL KITS

- Smooth
- Modern Subway Tile Pattern
- Traditional Subway Tile Pattern
- Metro Subway Tile Pattern
- Classic Subway Tile Pattern
- Square Tile Pattern

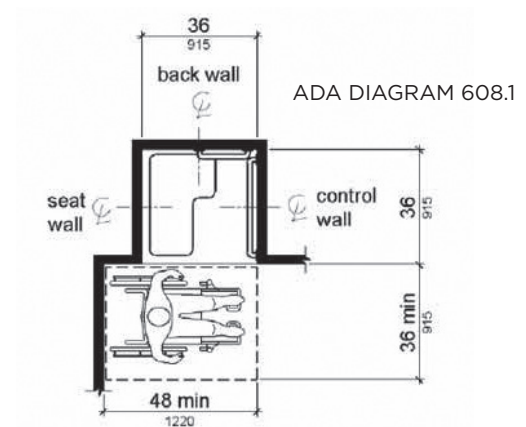
Wall panels can be easily trimmed to fit any shower floor.

CODE COMPLIANCE

2016 CBC, ADA*, TAS, MASS

MEETS ADA 2010 REQUIREMENTS

608.2.1 TRANSFER SHOWER COMPARTMENTS



Note: inside finished dimensions measured at the center points of opposing sides.

*Meets ADA requirements when installed according to guidelines.
Check local building code requirements.



PERFORMIX ROLL-IN TRENCH



SBF-3462 and accessories shown

The Swanstone® Performix Roll-In Trench installs directly and easily to the subfloor, which eliminates the need for expensive labor to adjust floor height. The trench drain, placed on the front edge of the floor, needs no additional ramp. This model meets ADA accessibility requirements for new and renovated bathing facilities.



ADA CODE COMPLIANT DESIGN

SBF-3462

34" X 62" SWANSTONE® PERFORMIX ROLL-IN SHOWER FLOOR

Interior Dimensions 32" x 60"

Available in the Swanstone® standard color offering

COMPATIBLE WITH SWANSTONE WALL KITS

- Smooth
- Modern Subway Tile Pattern
- Traditional Subway Tile Pattern
- Metro Subway Tile Pattern
- Classic Subway Tile Pattern
- Square Tile Pattern

Wall panels can be easily trimmed to fit any shower floor.

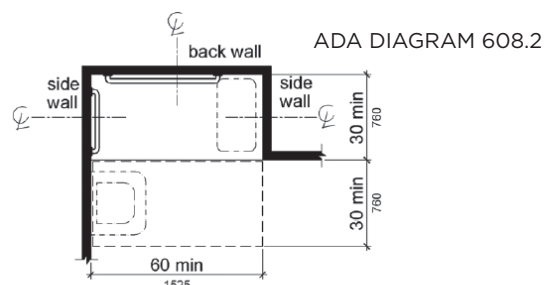
CODE COMPLIANCE

2016 CBC, ADA*, TAS, MASS

MEETS ADA 2010 REQUIREMENTS

608.2 STANDARD ROLL-IN TYPE SHOWER COMPARTMENTS

608.7 THRESHOLDS (NEW OR RENOVATION)



Note: inside finished dimensions measured at the center points of opposing sides

**Meets ADA requirements when installed according to guidelines. Check local building code requirements.*





SK-364872, SS-7211, TK-6072 and STS-3738.
BF-5024 grab bars and BF-2300L seat shown

Swanstone® center drain transfer models allow easier access to the shower at a more affordable price point.



ACCESSIBLE DESIGN

TRANSFER SHOWER COMPARTMENTS

608.2.1 TRANSFER SHOWER COMPARTMENTS

Meets ADA requirements when installed according to guidelines. Check local building code requirements.



STS-3738

37" X 38" SWANSTONE® TRANSFER SHOWER FLOOR

Interior Dimensions: 35" x 35-1/2"

Available in the Swanstone® standard color offering

COMPATIBLE WITH SWANSTONE WALL KITS

- Smooth
- Modern Subway Tile Pattern
- Traditional Subway Tile Pattern
- Metro Subway Tile Pattern
- Classic Subway Tile Pattern
- Square Tile Pattern

Wall panels can be easily trimmed to fit any shower floor.

FTS-3738

37" X 38" VERITEK™ TRANSFER SHOWER FLOOR

Interior Dimensions: 35" x 35-1/2"

Available in White only.

COMPATIBLE WITH SWANSTONE WALL KITS

- Smooth
- Modern Subway Tile Pattern
- Traditional Subway Tile Pattern
- Metro Subway Tile Pattern
- Classic Subway Tile Pattern
- Square Tile Pattern

Wall panels can be easily trimmed to fit any shower floor.

ACCESSIBLE BARRIER-FREE



SK-366072, SS-7211, SBF-3060R and BF-1260 shown in White (010) BF-5072 and BF-2300L accessories shown

Accessible Barrier-Free Shower Floors are designed with a low threshold for wheelchairs to easily enter the shower. These shower floors work great for remodels because they fit standard bathtub areas and can replace a bathtub without removing existing plumbing.



ACCESSIBLE DESIGN



SWANSTONE® BARRIER-FREE

Model	Dimensions	Drain
SBF-3060L	30" x 60"	Left Side
SBF-3060R	30" x 60"	Right Side
BF-1260	12" x 60"	Ramp

Available in the Swanstone® standard color offering.

VERITEK™ BARRIER-FREE

Model	Dimensions	Drain
FBF-3060L	30" x 60"	Left Side
FBF-3060R	30" x 60"	Right Side
FBF-1260	12" x 60"	Ramp

Available in White only.

COMPATIBLE WITH SWANSTONE WALL KITS

- Smooth
- Modern Subway Tile Pattern
- Traditional Subway Tile Pattern
- Metro Subway Tile Pattern
- Classic Subway Tile Pattern
- Square Tile Pattern

Wall panels can be easily trimmed to fit any shower floor.



BT-3060L/R

30" X 60" VERITEK™ RETROFIT BATHTUB

Available in White only.

COMPATIBLE VERITEK™ WALL KIT

GN-58 30" x 60" x 58"

Available in White only.

This product meets the dimensional requirements to allow for installation in ADA applications when installed to ADA guidelines.



ACCESSIBLE DESIGN

GN-58 and BT-3060 shown in White (010)



The Retrofit Shower model allows for aging in place and easier access to bathing facilities without replacing existing plumbing. This model features a lower threshold than standard floors for easy entry and exit.

SR-3260

SWANSTONE® RETROFIT SHOWER PAN

Model	Dimensions	Drain
SR-3260L	32" x 60"	Left Side
SR-3260R	32" x 60"	Right Side

Available in the Swanstone® standard color offering.

FR-3260

VERITEK™ RETROFIT SHOWER PAN

Model	Dimensions	Drain
FR-3260L	32" x 60"	Left Side
FR-3260R	32" x 60"	Right Side

Available in White only.

COMPATIBLE WITH SWANSTONE WALL KITS

- Smooth
- Modern Subway Tile Pattern
- Traditional Subway Tile Pattern
- Metro Subway Tile Pattern
- Classic Subway Tile Pattern
- Square Tile Pattern

Wall panels can be easily trimmed to fit any shower floor.





ACCESSIBLE ACCESSORIES

FOLDING SHOWER SEAT

Model	Dimensions
BF-2300L	23-1/3" x 22-1/2"
BF-2300R	23-1/3" x 22-1/2"

Can be mounted to back or side walls.

STAINLESS STEEL GRAB BARS

Model	Dimensions
BF-2448	24" x 48" (L-shaped)
BF-5024	24"
GB-1432	14" x 32" (L-shaped)

STAINLESS STEEL GRAB BAR KIT

Model	Dimensions
BF-5072	24" bar + 48" bar

Installation instructions included on grab bar items.

THRESHOLDS

Model	Description
BF-6000	Removable Threshold
BF-FT	Flexible Threshold
BF-CT	Collapsible Threshold

ACCESSIBLE VANITY TOPS AND BOWLS

Swan Vanity Bowls coordinate with Swanstone® Custom Vanity tops for a seamless, easy-to-clean surface. All Swanstone® vanity bowls and vanity tops are ADA-compliant when installed to ADA guidelines.

For commercial or residential custom applications, easily configure your ADA-compliant vanity top using our Custom Vanity Top designer at customvanity.swanstone.com.

For specification information on all our ADA-compliant products visit swanstone.com.

Vanity Bowls

Vanity Top Finishing Kits

Ellipse Vanity Tops

- 17" W Single Bowl
- 22" W Single Bowl
- 19" W Single Bowl
- 22" W Double Bowl

Contour Vanity Tops

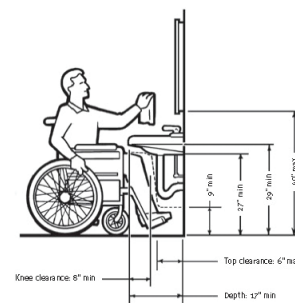
- 22" W Single Bowl

Chesapeake Vanity Tops

- 22" W Single Bowl
- 22" W Double Bowl

Europa Vanity Tops

- 22" W Single Bowl



ADA CODE COMPLIANT DESIGN



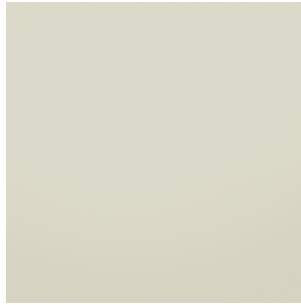
SWANSTONE® COLOR OFFERINGS



White (010)



Bone (037)



Bisque (018)



Bermuda Sand (040)



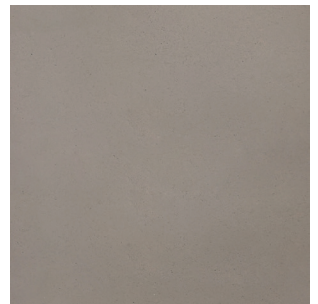
Carrara (221)



Clay (212)



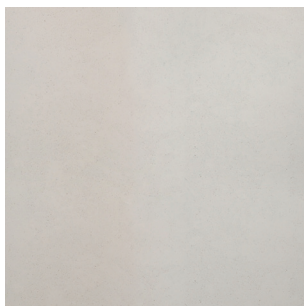
Limestone (218)



Sandstone (215)



Ash Gray (203)



Birch (226)



Charcoal Gray (209)



Ice (130)



Tahiti White (011)

SPECIAL ORDER COLORS

To view the large selection of available special order colors, please visit:

<https://swanstone.com/en/collections-and-finishes/materials-and-finishes/finishes>

To order samples please visit:

<https://swanstone.com/en/sampleordering>

SWANSTONE® COLOR VARIANCE:

Swanstone® products are individually molded and produce unique variations. Product coloring, shading, chip, swirl, and concentration can vary from product to product due to the flow of material during the manufacturing process. Please contact Swan Customer Care to learn more or ask questions about the color manufacturing process.

