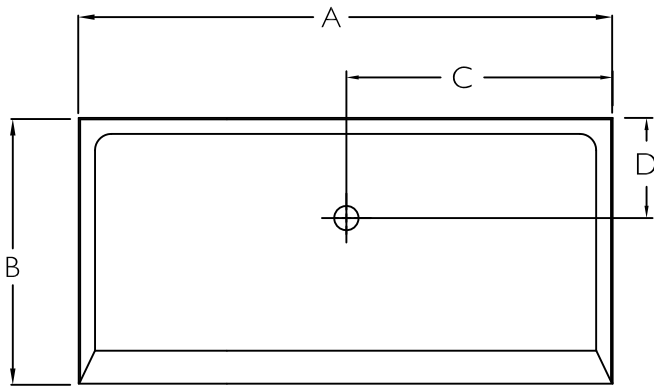
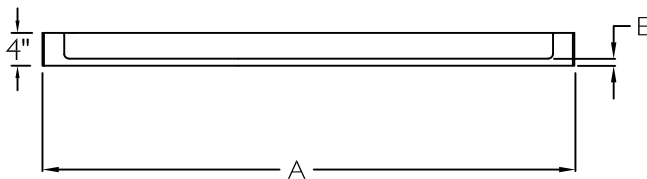




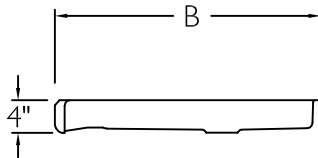
TOP VIEW



FRONT VIEW



SIDE VIEW



SPECIFICATION SHEET

This shower enclosure shall be model XAB CUST BF Pan center drain. Finished surface shall be of a sanitary grade cast acrylic. Unit construction shall be of a molded reinforced fiberglass with a 15% minimum fiberglass content.

The unit shall have outside maximum outside dimensions of 80" x 60" x 4". The unit shall meet ANSI Z124.1-2, CSA B45.5, and HUD-UM73.

HANDED BY THE DRAIN

The enclosure shall be equipped with the following features:

- 1) Custom drain location,
- 2) Slip resistant pattern on floor,
- 3) Barrier free threshold.

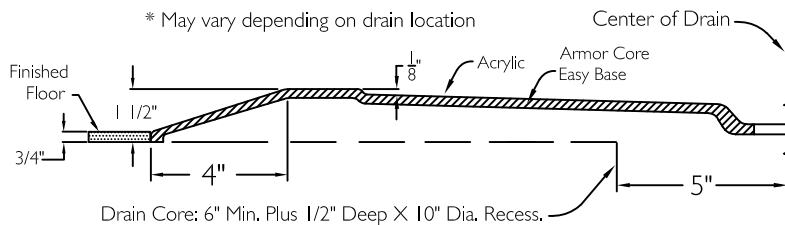
Custom Measurements			
	Min	Max	Customer
A	TBD	80"	
B	TBD	60"	
C	8" from Right	8" from Left	
D	8" from Rear	8" from Front	
E	3/4"	*	

* May vary depending on drain location

Please indicate necessary dimensions in 'Customer' column.

CROSS SECTION OF THRESHOLD*

* May vary depending on drain location



FINISHED WALLS ABOVE THE SHOWER BASE BY OTHERS.

Job Name	Approved By Print Name		Date	COMFORT DESIGNS	
Project No	Approved By Signature			Model No. XAB CUST BF	
Comfort Designs 435 Industrial Road Savannah, TN 38372 tel 800.443.7269 fax 731.925.4290 www.comfortdesignsbathware.com	Architect			Drawing No. XAB CUST BF Pan	
	Engineer			Date Issued, 1-10-24	Drawing Rev. 2-7-24
	Rep			Material. Cast Acrylic	
	Wholesaler			Color.	
	Comments			Dimensions are in inches. Due to the nature of the materials dimensions may vary $\pm 1/2"$	