

Vanity Top

CHESAPEAKE SINGLE BOWL**SIGNATURE****FEATURES**

- Chemical resistant — acetone will not harm
- Heat resistant — hot curling irons will not burn
- Make-up and hair-dye can be buffed out with household cleansers
- Durable Swanstone® has the best impact resistance in the industry — up to ten times stronger
- Capacity: 2 gallons to overflow
- One pre-drilled faucet point, four drill points for additional faucet styles
- Overflow hole located on front of bowl; ensure drain tube is secured, with silicone, to overflow channel underneath counter top

OPTIONAL ACCESSORIES

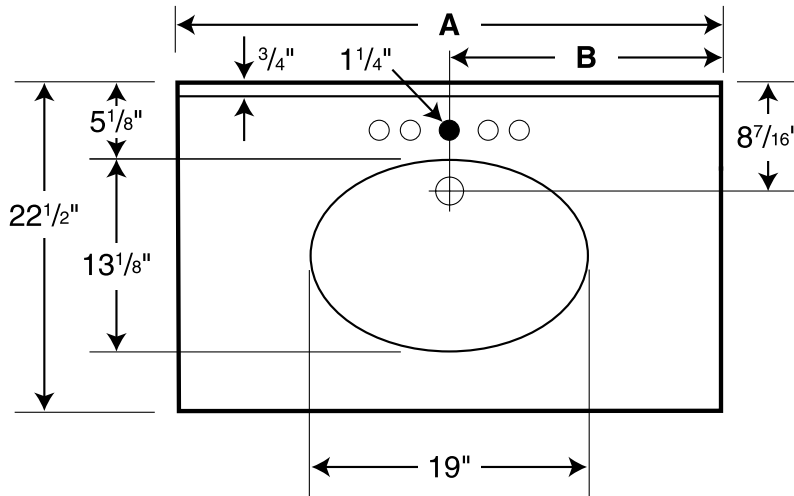
- CHVTSS Side Splash
- Front and Side Aprons

STANDARDS AND RATINGS

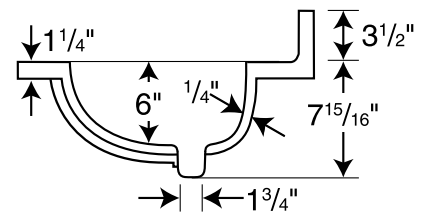
- American National Standard Institute—ANSI Z124.3
- International Association of Plumbing and Mechanical Officials (IAPMO)—Listed
- cUPC listed—Certified to CSA Test Standard
- B45.5 by IAPMO
- Uniform Plumbing Code (UPC)



CHESAPEAKE SINGLE BOWL



○ Drill Points ● Pre-drilled



All dimensions are approximate.
Structure measurements must be verified
against the unit to ensure proper fit.

DIMENSIONS Dimensional Tolerance $\pm \frac{3}{16}$ ". Dimensions needed for site preparation should be measured from the unit. Manufacturer assumes no responsibility for preparatory work.

Part #	A	B	Depth	Material	Pkg. Wt.
CH1B2225	25"	12 1/2"	22 1/2"	Swanstone® Solid Surface	22 lbs
CH1B2231	31"	15 1/2"	22 1/2"	Swanstone® Solid Surface	27 lbs
CH1B2237	37"	18 1/2"	22 1/2"	Swanstone® Solid Surface	28 lbs
CH1B2243	43"	21 1/2"	22 1/2"	Swanstone® Solid Surface	40 lbs
CH1B2249	49"	24 1/2"	22 1/2"	Swanstone® Solid Surface	46 lbs
CH1B2255	55"	27 1/2"	22 1/2"	Swanstone® Solid Surface	52 lbs
CH1B2261	61"	30 1/2"	22 1/2"	Swanstone® Solid Surface	59 lbs

BOWL DIMENSIONS

Specifications	inches
Width: Overall / Net	19
Depth: Overall / Net	13 1/8
Height: Overall / Net	7 15/16 / 6