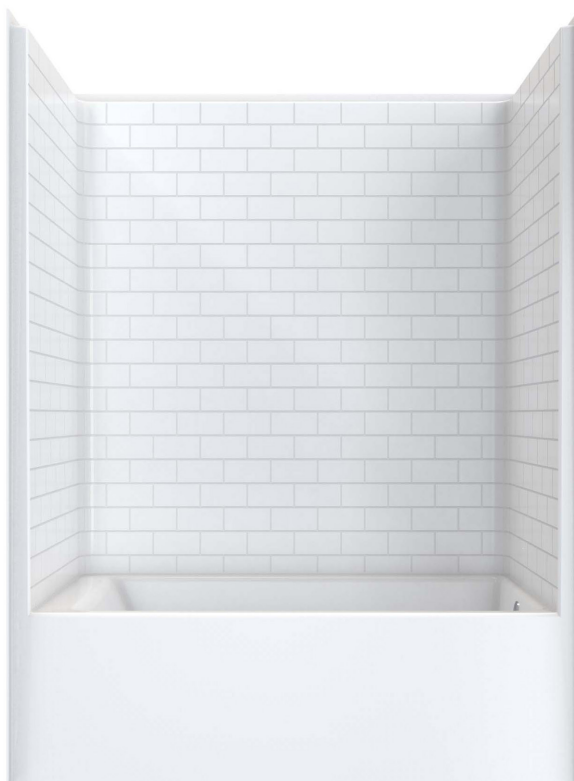


# 6032STTML/R

inches

## TUB/SHOWERS

60 x 32 x 83 inches



### FEATURES

- Tub-shower
- Subway tile finish
- Ergonomic backrest
- Above-floor rough
- Slip-resistant textured bottom
- Left or right hand drain
- AcrylX® applied acrylic surface
- Lifetime limited warranty

### OPTIONS

- Grab bar reinforcement
- FHA reinforced backing

### CODE COMPLIANCE

- Meets FHA requirement code 6

### COLOR OPTIONS

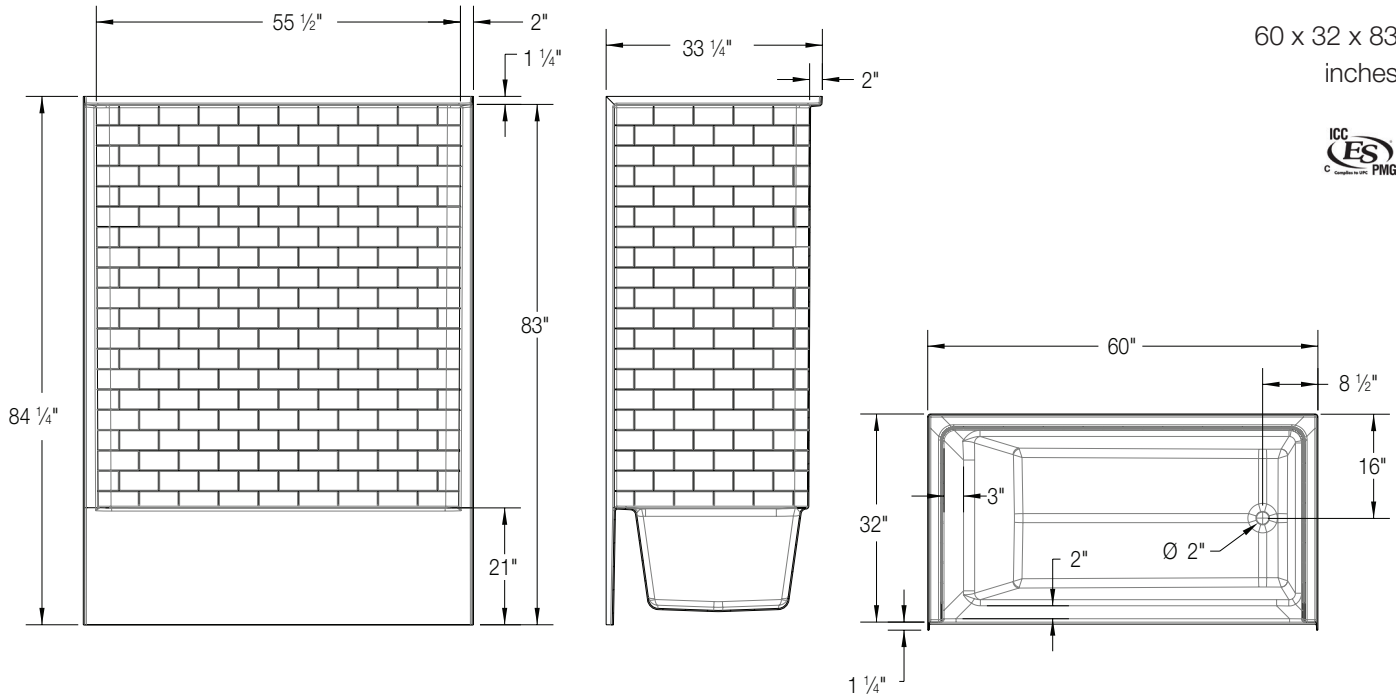
Standard Color	Code
White	WT

**FLORESTONE**  
A spec above.



### 6032STTML/R

60 x 32 x 83  
inches



**FEATURES** Dimensional Tolerance  $\pm 1/4"$ . Dimensions needed for site preparation should be measured from the unit. American Bath Group assumes no responsibility for preparatory work.

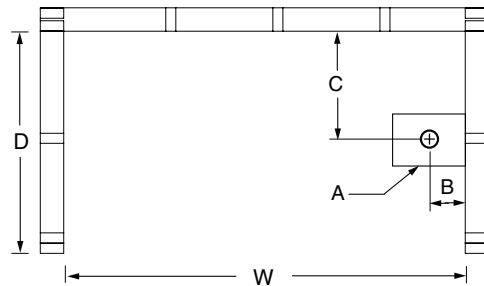
Model #	Material	Wall Finish	Drain	Net Wt.
AFR Tub-Shower #6032STTML/R	AcrylX®	Subway Tile	LH or RH	140

#### DIMENSIONS

Specifications	inches
Width: Ext. / Int.	60
Depth: Ext. / Int.	32 / 33 1/4
Height: Ext. / Int.	84 1/4 / 83
Enclosure Opening	55 1/2
Skirt Height	21
Drain Rough-In (from Back Wall)	16
Drain Rough-In (from Side Wall)	2 1/8
Drain: Diameter / Clearance	2 / 3 3/4

#### FRAMING DIMENSIONS inches

Type	D Depth	W Width	H Height	A	B	C
Aclove	33 1/2	60 1/8	-	Box Out	2 1/8	16



#### SUMP DATA

Top of Drain to Bottom of Overflow	Capacity to Overflow gal	Min. Operating Capacity gal	WIDTH @ centerline		DEPTH @ centerline	
			Top	Bottom	Top	Bottom
12 3/8	52	-	49 3/8	42 1/4	25 1/8	21 3/8

Rev. 03.03.26

